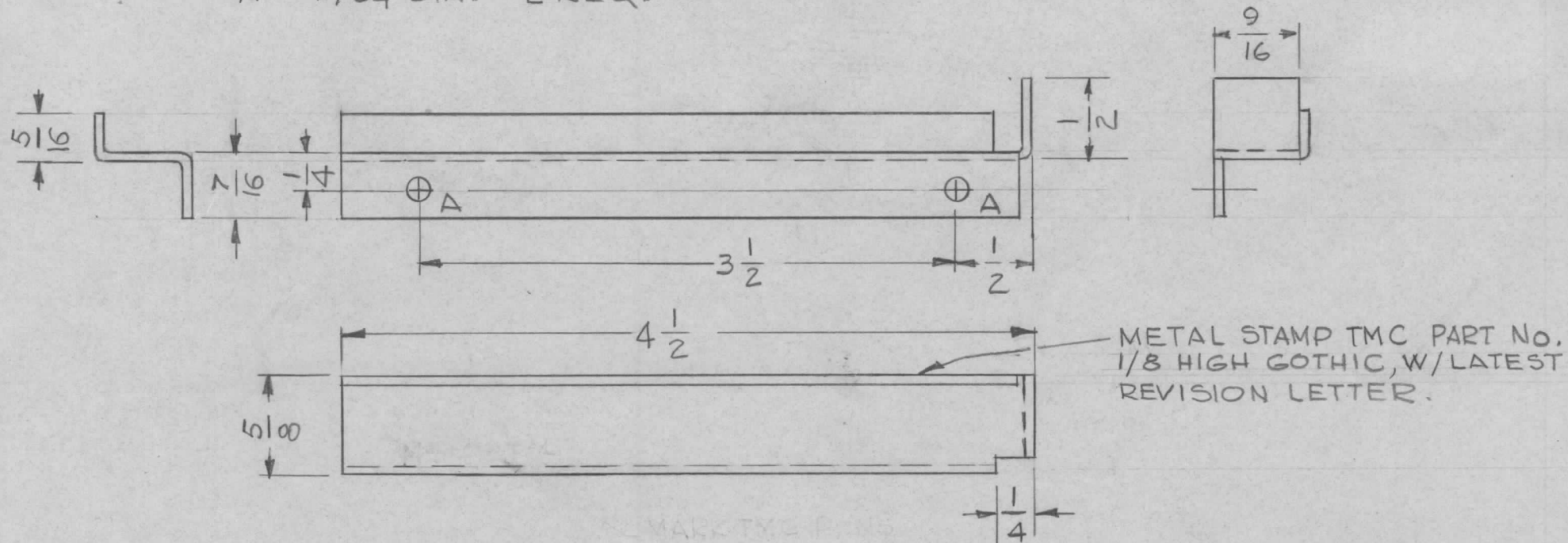


- HOLE -  
A - 11/64 DIA. 2 REQ.

REQ. PER UNIT	USED ON		
	MODEL	ASSY. NO.	DATE
1	TOC-7	A 5434	2-16-66

MS 4871 A



METAL STAMP TMC PART NO. 1/8 HIGH GOTHIC, W/LATEST REVISION LETTER.

**UNLESS OTHERWISE SPECIFIED:**

1. USE MATERIAL THICKNESS FOR MAXIMUM RADIUS ON ALL BENDS
2. ALL ANGULAR BENDS 90 DEGREES
3. REMOVE ALL BURRS AND SHARP EDGES

- FINISH NOTE -  
1 - S104 PASSIVATE  
2 - S114 ZINC CHROMATE POWDER  
3 - S115 SMOOTH GRAY ENAMEL

REQ.	ITEM	PART NO.	POSE	DESCRIPTION	SYMBOL		
		16 GA (.063)		THE TECHNICAL MATERIEL CORP. MAMARONECK. NEW YORK			
		STAINLESS STEEL		BRACKET, MTG. LEFT SIDE			
A	DELE. FINISH NOTE 2 & 3	5-2-66	16191	H/A	<i>[Signature]</i>		
$\emptyset$	ORIGINAL RELEASE FOR PRODUCTION	3-28-66	-	H/A	<i>[Signature]</i>		
SYM	DESCRIPTION	DATE	CH. NO.	DRAFTS	CHECKER	ENG. APP.	
UNLESS OTHERWISE SPECIFIED DIMENSIONS ARE IN INCHES AND INCLUDE CHEMICALLY APPLIED OR PLATED FINISHES		SCALE 1:1					
DECIMALS .X ± .05 .XX ± .01 .XXX ± .005	TOLERANCES	FRACTIONS ± 1/64 ANGLES ± 0° 30'	CODE A				
SEE NOTES		302		G.D.L. 2-16-66		<i>[Signature]</i>	
FINISH & SPEC. NO.		HEAT TREAT. SPEC.		DRAWN		CHECKED	FINAL APPROVAL
						MS 4871 A	