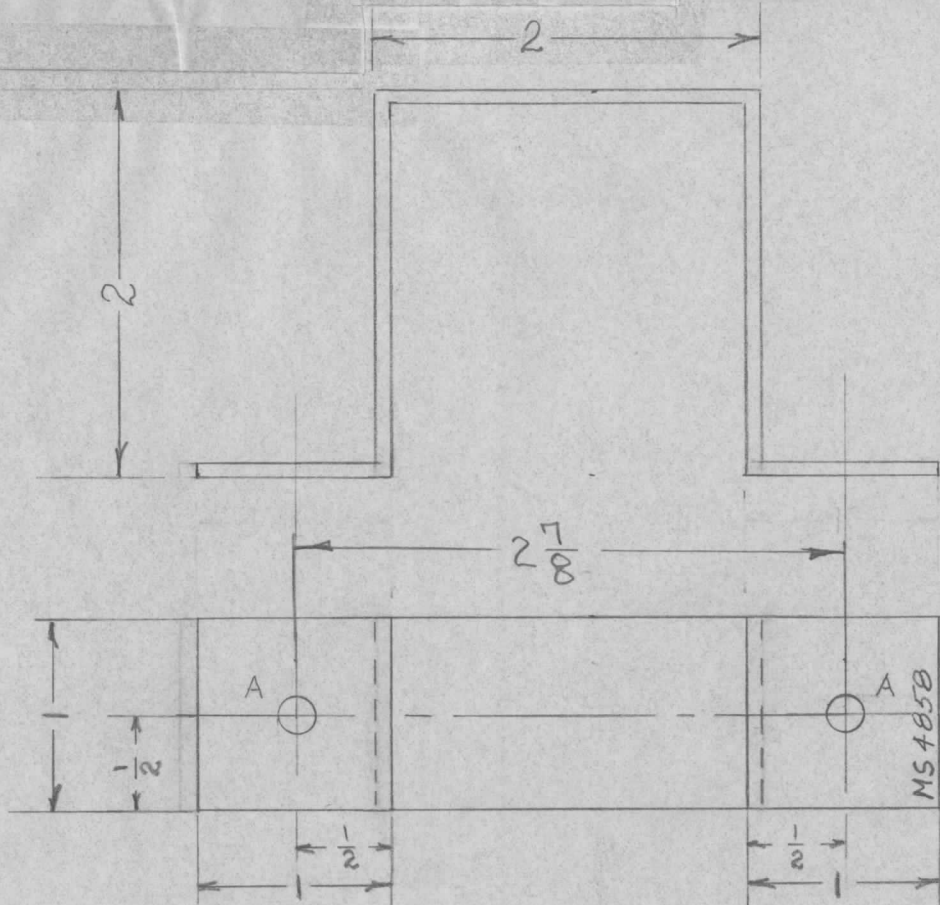


REQ. PER UNIT	USED ON			MS 4858 $\phi$
	MODEL	ASS'Y. NO.	DATE	
1	KIT 180		12-3-65	



A -  $\frac{11}{64}$  DIA. — 2 REQ'D

STAMP W/TMC PIN W/LATEST REVISION LETTER  $\frac{1}{8}$  HIGH GOTHIC.

UNLESS OTHERWISE SPECIFIED DIMENSIONS ARE IN INCHES AND INCLUDE CHEMICALLY APPLIED OR PLATED FINISHES		
DECIMALS	TOLERANCES	FRACTIONS
.X $\pm$ .05		$\pm$ 1/64
.XX $\pm$ .01		ANGLES
.XXX $\pm$ .005		$\pm$ 0° 30'

CUT WERE GUARANTEED 2-66

REQ. ITEM	PART NO.	DESCRIPTION	SYMBOL
	.064	THE TECHNICAL MATERIEL CORP. MAMARONECK, NEW YORK	$\phi$
	STOCK SIZE		
	ALUM.	BRKT. AIR DUCT	
	MATERIAL		
ISSUE ITEM	CHANGED FROM	DATE	CH. NO.
	ORIGINAL RELEASE	2/2/66	
	DATE	CH. NO.	DRAFTS
	2/2/66		
	CHECKER	ENG. APP.	
TOLERANCES		SCALE:	
DEC. DIM. $\pm$		MAXIMUM ALLOWABLE TOLERANCES HAVE BEEN DETERMINED AND ANY DEVIATIONS WILL BE CAUSE FOR REJECTION.	
FRAC. DIM. $\pm$		REMOVE ALL BURRS AND SHARP EDGES	
ANGULAR DIM. $\pm$			
5052-432	TYPE & TEMPER	HEAT TREAT. SPEC.	DRAWN
	S404 YEL. IRIDITE		CHECKED
	FINISH & SPEC. NO.	ELEC. DES. APP.	MECH. DES. APP.
			MS 4858 $\phi$