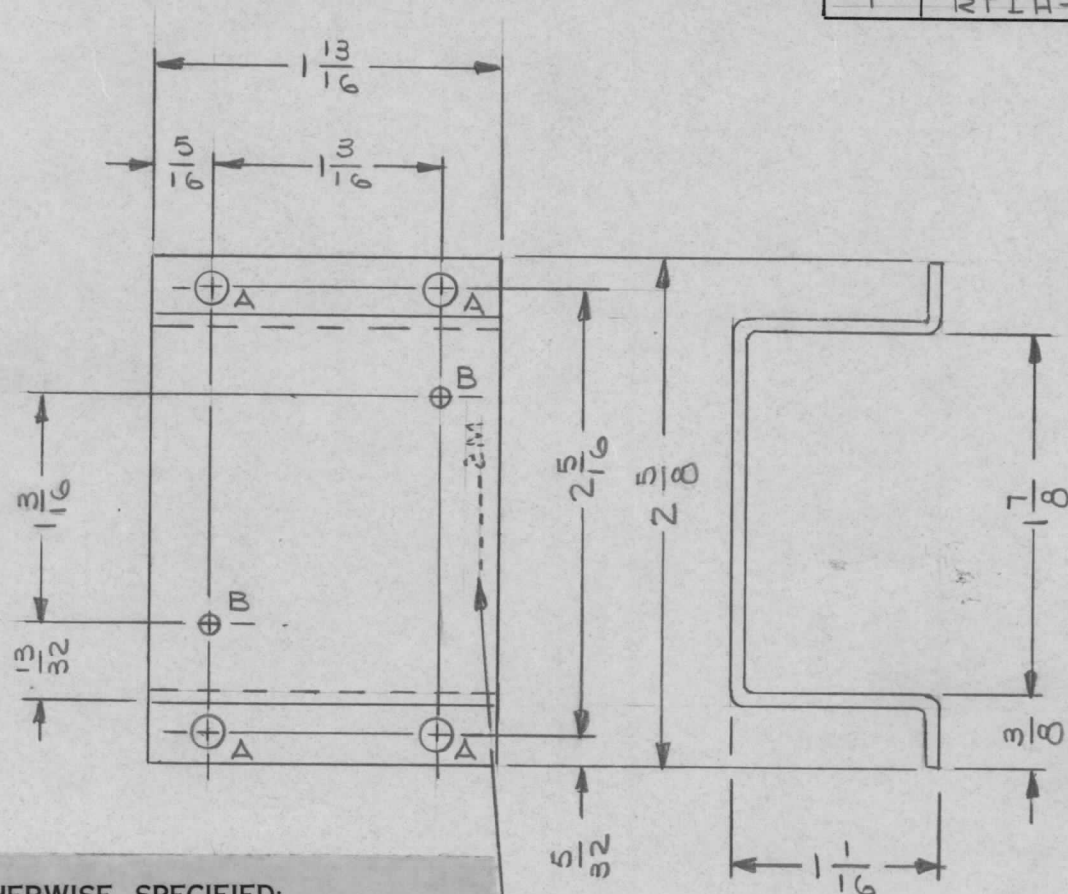


REQ. PER UNIT	USED ON			MS4845	Ø
	MODEL	ASS'Y. NO.	DATE		
1	RTIH-1		11/22/65		



HOLE LEGEND		
HOLE	DESCRIPTION	REQ'D
A	11/64 DIA	4
B	9/64 DIA	2

UNLESS OTHERWISE SPECIFIED:

1. USE MATERIAL THICKNESS FOR MAXIMUM RADIUS ON ALL BENDS
2. ALL ANGULAR BENDS 90 DEGREES
3. REMOVE ALL BURRS AND SHARP EDGES

MARK 1/8 HIGH GOTHIC, (ON INSIDE)
TMC PT. NO. W/LATEST REV. LETTER

							REQ. ITEM	PART NO.	F.E. EATON DESCRIPTION SK 3229-7			SYMBOL	
							.064 THK		THE TECHNICAL MATERIEL CORP. MAMARONECK, NEW YORK				
							STOCK SIZE		MTG BRACKET-F.W. RECTIFIER				
							ALUMINUM						
Ø	ORIGINAL RELEASE	4/18/66	M	Jc	qfb								
SYM	DESCRIPTION	DATE	CH. NO.	DRAFTS	CHECKER	ENG. APP.							
UNLESS OTHERWISE SPECIFIED DIMENSIONS ARE IN INCHES AND INCLUDE CHEMICALLY APPLIED OR PLATED FINISHES		SCALE											
		1/1											
DECIMALS	TOLERANCES	FRACTIONS	CODE										
.X ± .05		± 1/64											
.XX ± .01		ANGLES											
.XXX ± .005		± 0° 30'											
							5052-H32	HEAT TREAT. SPEC.		J.L.	qfb	F.E. Eaton 4/18/66	
							YELLOW IRIDITE PER S404	DRAWN		4/18/66	qfb	FINAL APPROVAL	
							FINISH & SPEC. NO.	ELEC. DES. APP.		MECH. DES. APP.		MS4845 Ø	