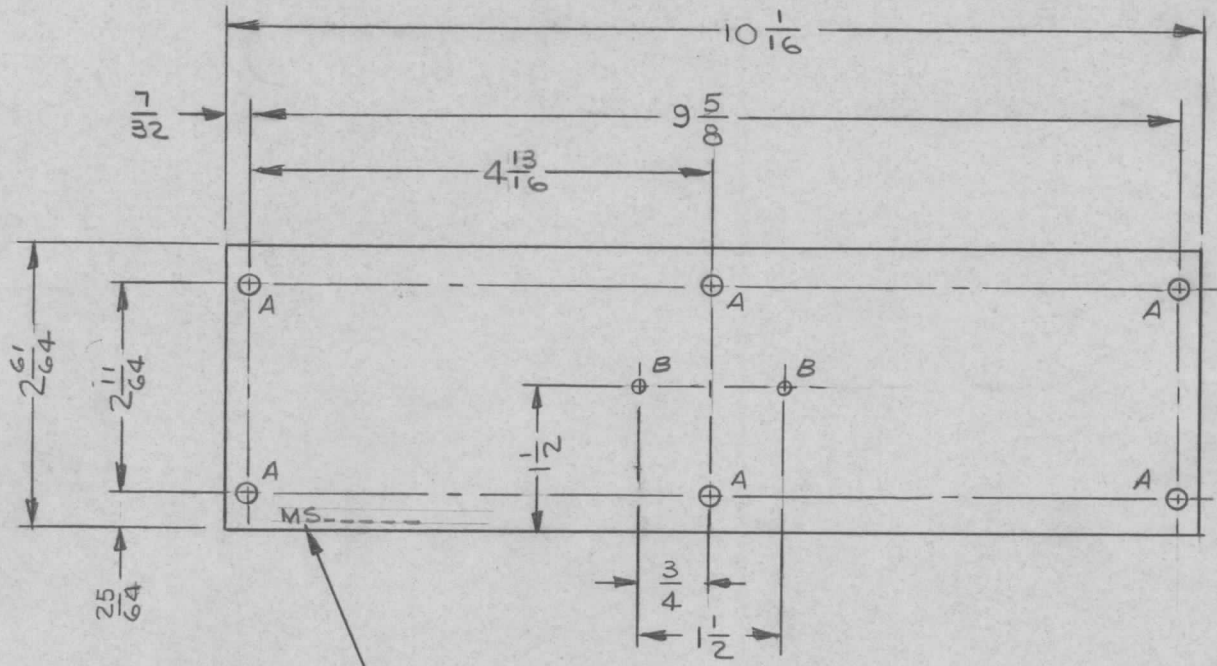


REQ. PER UNIT	USED ON		MS4844 \emptyset
	MODEL	DATE	
2	RTIH-1	11/23/65	



MARK 1/8 HIGH GOTHIC, TMC PT. NO. W/LATEST REV. LETTER

HOLE	DESCRIPTION	REQ'D
A	13/64 DIA	6
B	1/8 DIA	2

							REQ. ITEM	PART NO.	F.E. EATON	DESCRIPTION	SK3229-8	SYMBOL	
							.067 THK		THE TECHNICAL MATERIEL CORP. MAMARONECK, NEW YORK				
							STOCK SIZE		PLATE, END - P.C. CARD BIN				
							ALUMINUM						
							MATERIAL						
							5052-H32		JL	<i>[Signature]</i>	<i>[Signature]</i> 4/18/66		
							TYPE & TEMPER	HEAT TREAT. SPEC.	DRAWN	CHECKED	FINAL APPROVAL		
							YELLOW IRIDITE PER S 404			<i>[Signature]</i> 11/18/65	MS4844 \emptyset		
							FINISH & SPEC. NO.	ELEC. DES. APP.	MECH. DES. APP.				
UNLESS OTHERWISE SPECIFIED DIMENSIONS ARE IN INCHES AND INCLUDE CHEMICALLY APPLIED OR PLATED FINISHES							SCALE 1/2						
DECIMALS .X ± .05 .XX ± .01 .XXX ± .005							TOLERANCES		FRACTIONS ± 1/64 ANGLES ± 0° 30'		CODE		
ORIGINAL RELEASE							4/18/66	<i>[Signature]</i>	Jc	<i>[Signature]</i>			
SYM	DESCRIPTION						DATE	CH. NO.	DRAFTS	CHECKER	ENG. APP.		