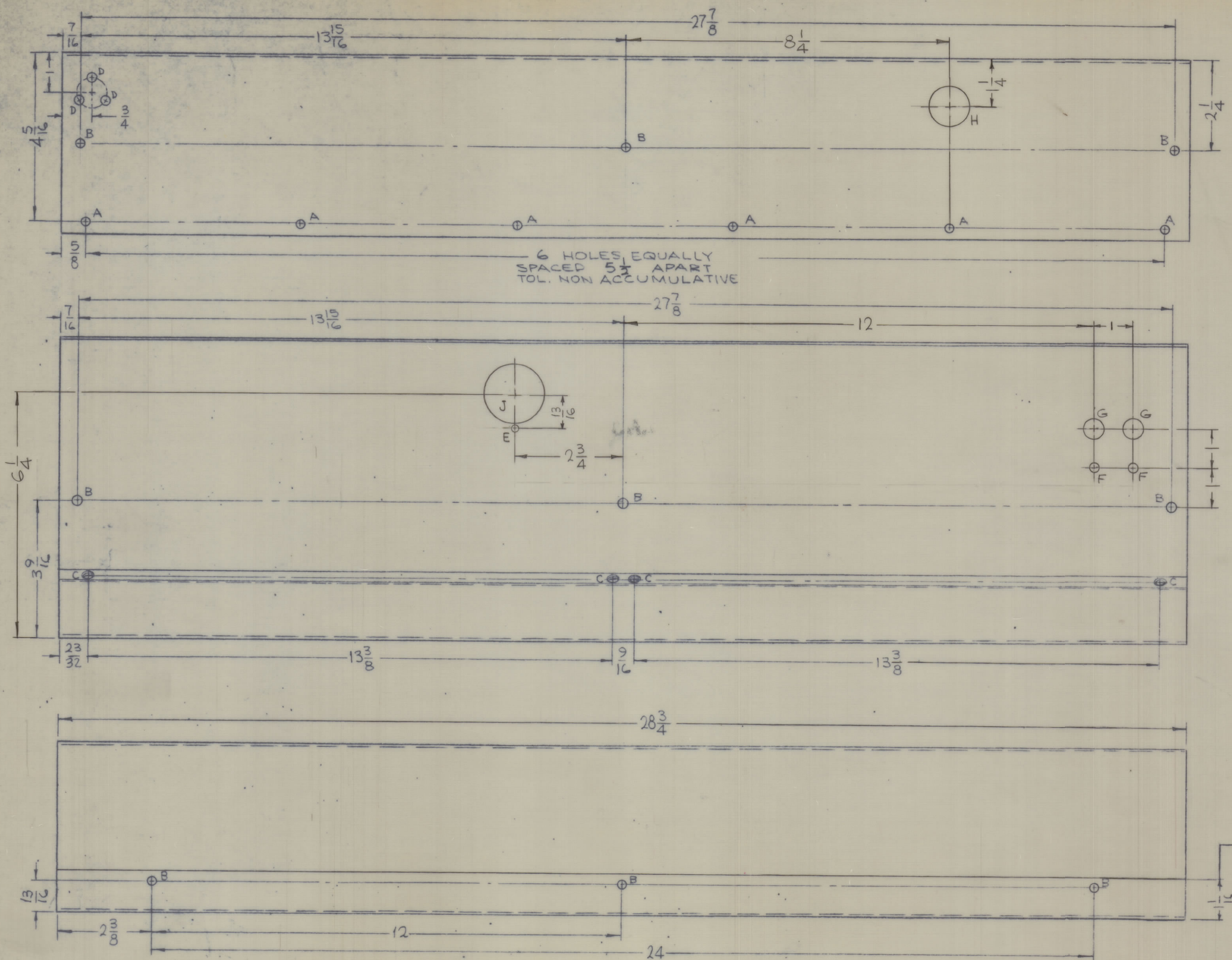
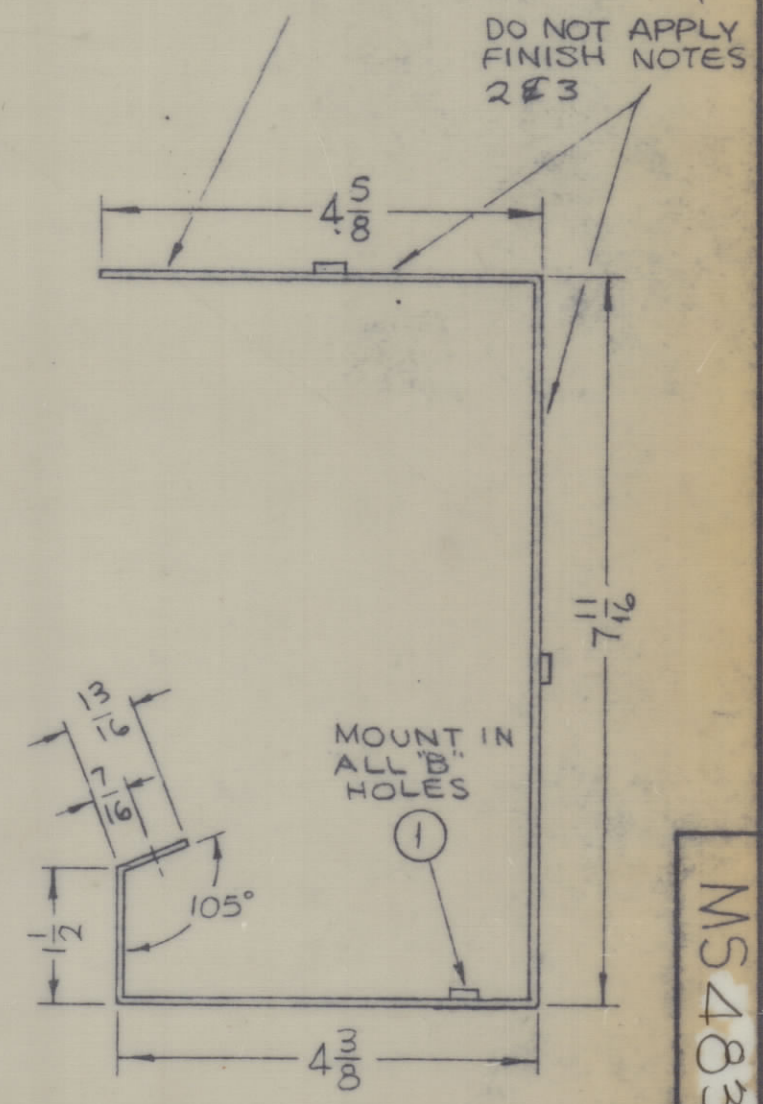


ZONE		SYM	DESCRIPTION	DATE	ENR. NO.	DRAFT	CHKD.	APPD.
			ORIGINAL RELEASE FOR PRODUCTION	11/13/65				



METAL STAMP TMC P/N (MS 4830)
 1/8" HIGH GOTHIC W/LATEST
 REV. LETTER.



DO NOT APPLY
 FINISH NOTES
 2 & 3

HOLES	DESCRIPTION	REQ
A	11/64 DIA.	6
B	.221-.224 DIA.	9
C	DR. 144 DIA. C'SINK 82° TO .284 D	4
D	15/64 DIA. 120° APART ON 3/8"	3
E	.166 ± .003	1
F	13/64 DIA.	2
G	1/2 DIA.	2
H	1" DIA.	1
J	1-7/16 DIA.	1

UNLESS OTHERWISE SPECIFIED:

1. USE MATERIAL THICKNESS FOR MAXIMUM RADIUS ON ALL BENDS
2. ALL ANGULAR BENDS 90 DEGREES
3. REMOVE ALL BURRS AND SHARP EDGES
4. MOUNT INSERTS AFTER FINISHING

- FINISH NOTES:
1. S404 - IRIDITE 14-2 AL-COAT - ALL SURFACES
 2. S114 - ZINC CHROMATE PRIMER - AREAS SHOWN
 3. S115 - SMOOTH GRAY ENAMEL

NOTES

GPT-10KLF		ASS'Y. NO.
QTY/UNIT	MODEL USED ON	CODE
SCALE 1/2 : 1		A

THE CONTENTS OF THIS DRAWING ARE THE EXCLUSIVE PROPERTY OF THE TECHNICAL MATERIEL CORP. ITS UNAUTHORIZED USE OR REPRODUCTION IN WHOLE OR IN PART IS STRICTLY FORBIDDEN.

REF. LD2028

REQ'D.	ITEM	PART NUMBER	DESCRIPTION	SYMBOL
9	1	NT129-832-4	NUT, PLAIN, SPLINE	B

F. BUDETTI LIST OF MATERIAL

MATERIAL	THE TECHNICAL MATERIEL CORP.
.081 THICK ALUMINUM	MAMARONECK, NEW YORK
5052-H32	

SEE NOTES TITLE METER BOX, MAIN FRAME

DRAWN	DATE 11-24-65	FINAL APPROVAL	DATE 12/13/65
CHECKED	DATE 12/13/65		
ELECT. DES.	DATE	MS4830	
MECH. DES.	DATE		

MS4830