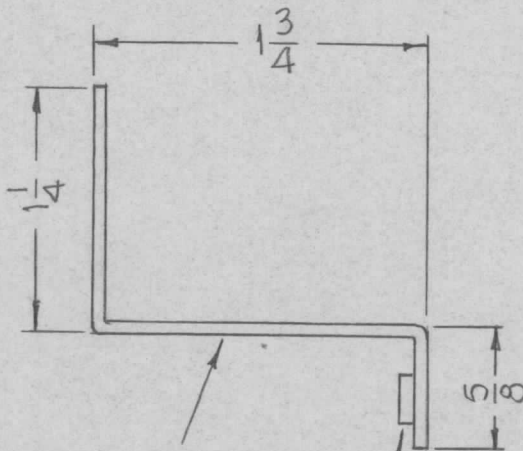
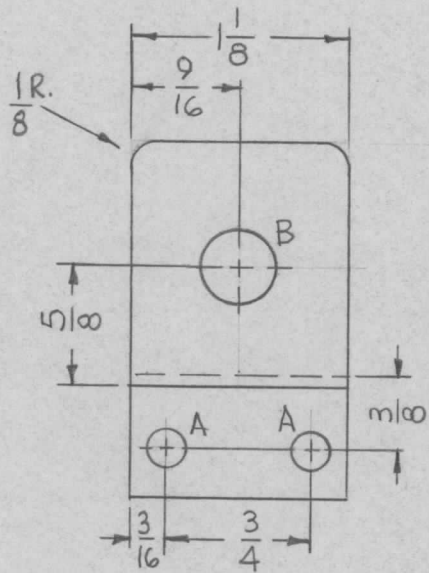


REQ. PER UNIT	USED ON			MS4829	Ø
	MODEL	ASS'Y. NO.	DATE		
1	VLLA-1		12-3-65		



METAL STAMP TMC P/N (MS4829) 1/8" HIGH GOTHIC W/LATEST REV. LETTER.

1 MOUNT IN "A" HOLES

HOLES:

A ~ .191-.194 DIA. (2REQ)

B ~ 3/8 DIA. (1REQ)

UNLESS OTHERWISE SPECIFIED:

1. USE MATERIAL THICKNESS FOR MAXIMUM RADIUS ON ALL BENDS
2. ALL ANGULAR BENDS 90 DEGREES
3. REMOVE ALL BURRS AND SHARP EDGES
4. MOUNT INSERTS AFTER FINISHING

REF: LD2027

						2	1	NT129-632-4	NUT, PLAIN, SPLINE	A
						REQ. ITEM		PART NO.	F. BUDETTI DESCRIPTION	SYMBOL
								.064 THICK	THE TECHNICAL MATERIEL CORP. MAMARONECK, NEW YORK	
								STOCK SIZE		
								ALUMINUM	BRACKET, MTG. POT	
								MATERIAL		
								5052-H32		
								TYPE & TEMPER	HEAT TREAT. SPEC.	DRAWN
								5404 YEL. IRIDITE		CHECKED
								FINISH & SPEC. NO.	ELEC. DES. APP.	MECH. DES. APP.
										MS4829
										Ø