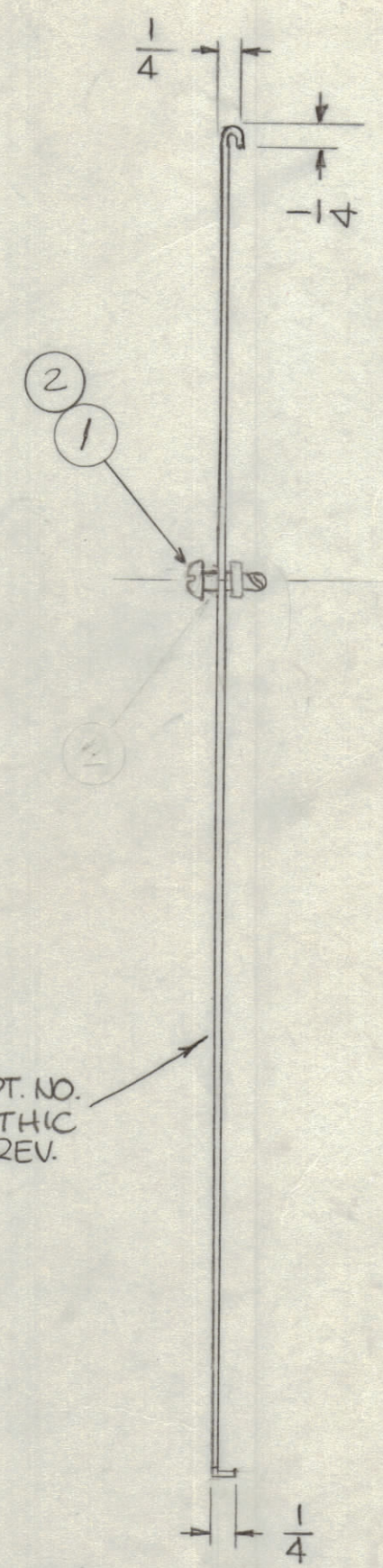
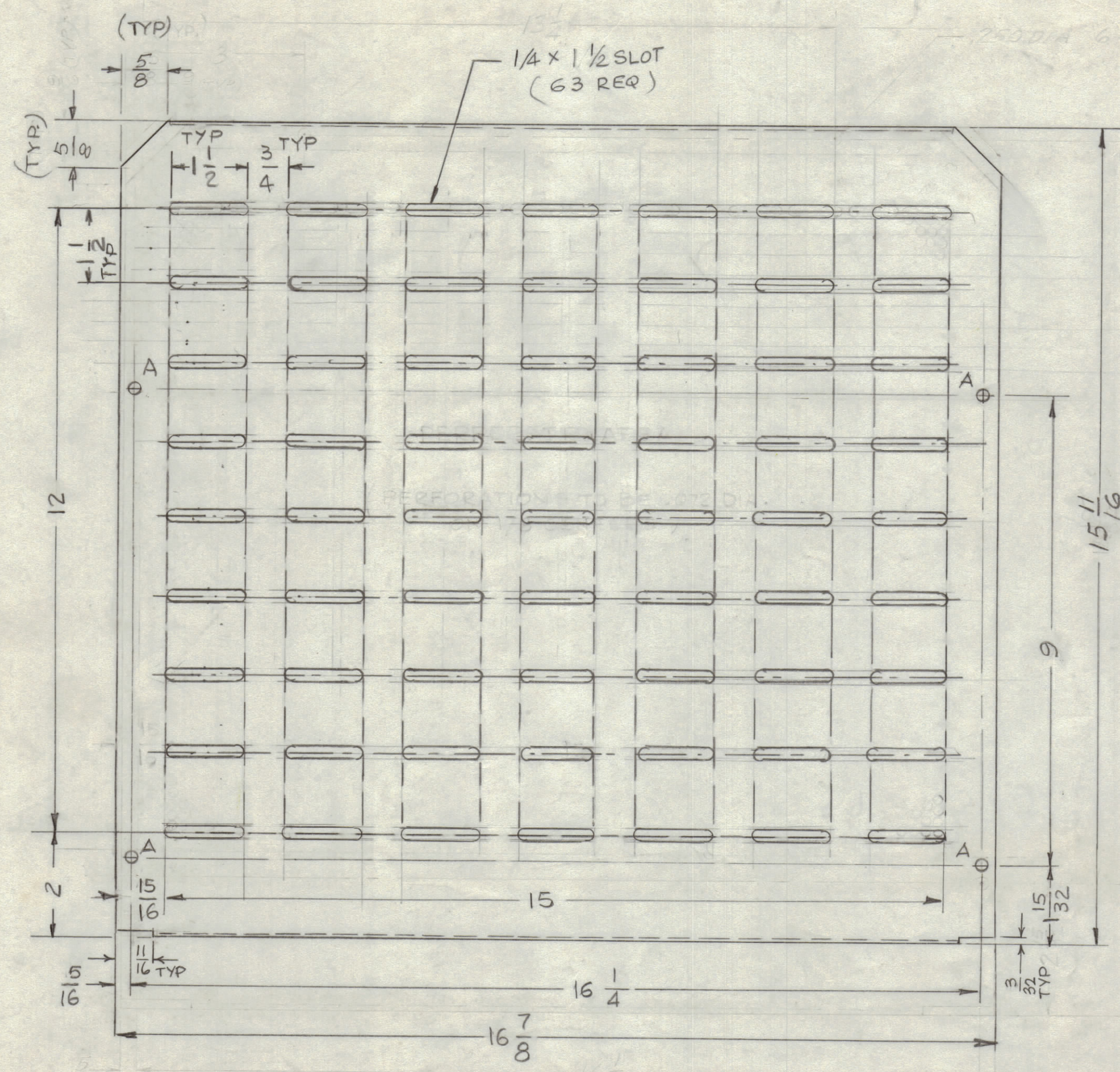


REVISIONS						
ZONE	SYM	DESCRIPTION	DATE	E.M.N. NO.	DRAFT	CHKD
		ORIGINAL RELEASE FOR PRODUCTION	2/3/66			
	A	DIM. 5/16 WAS 15/16 -	7-5-66	16501	G.D.L.	
	B	SLOTS AREA WAS PERFORATED	8-8-79	21699	GDL	

HOLES -
A - 1/4 DIA (4 REQ.)



MARK TMC PT. NO. 1/8 HIGH GOTHIC W/LATEST REV. LETTER.

NOTE: HARDWARE TO BE SUPPLIED AND ASSEMBLED BY TMC

- UNLESS OTHERWISE SPECIFIED:
1. USE MATERIAL THICKNESS FOR MAXIMUM RADIUS ON ALL BENDS
 2. ALL ANGULAR BENDS 90 DEGREES
 3. REMOVE ALL BURRS AND SHARP EDGES
 4. MOUNT INSERTS AFTER FINISHING

NOTES

2	CDN-3	
QTY./UNIT	MODEL USED ON	ASS'Y. NO.
SCALE 1:2	CODE A	
THE CONTENTS OF THIS DRAWING ARE THE EXCLUSIVE PROPERTY OF THE TECHNICAL MATERIEL CORP. ITS UNAUTHORIZED USE OR REPRODUCTION IN WHOLE OR IN PART IS STRICTLY FORBIDDEN.		

4	2	FS 109-3	RING, RETAINING	A	
4	1	FS 110-1	STUD, TURNLOCK	A	
REQ'D.		ITEM	PART NUMBER	DESCRIPTION	SYMBOL
POSE			LIST OF MATERIAL 5K 3213 MSG		
MATERIAL .051 ALUMINUM 5052-H32			THE TECHNICAL MATERIEL CORP. MAMARONECK, NEW YORK		
FINISH 5404 YELLOW IRIDITE			TITLE COVER, TOP & BOTTOM		
UNLESS OTHERWISE SPECIFIED DIMENSIONS ARE IN INCHES AND INCLUDE CHEMICALLY APPLIED OR PLATED FINISHES			DRAWN G.D.L.	DATE 12-17-65	FINAL APPROVAL [Signature]
DECIMALS X ± .05 XX ± .01 XXX ± .005			CHECKED [Signature]	DATE 1-18-66	DATE 2/4/66
FRACTIONS ± 1/64 ANGLES ± 0° 30'			ELECT. DES. [Signature]	DATE	
TOLERANCES			MECH. DES. [Signature]	DATE 2-4-66	
			DATE		
			SHEET		
			REV. LTR.		

MS 4818 B