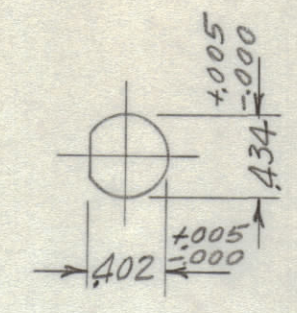
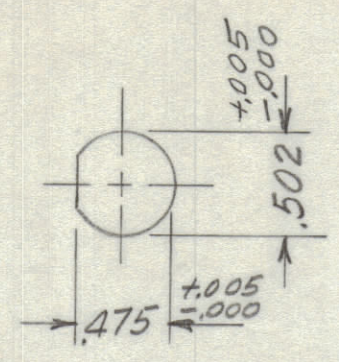
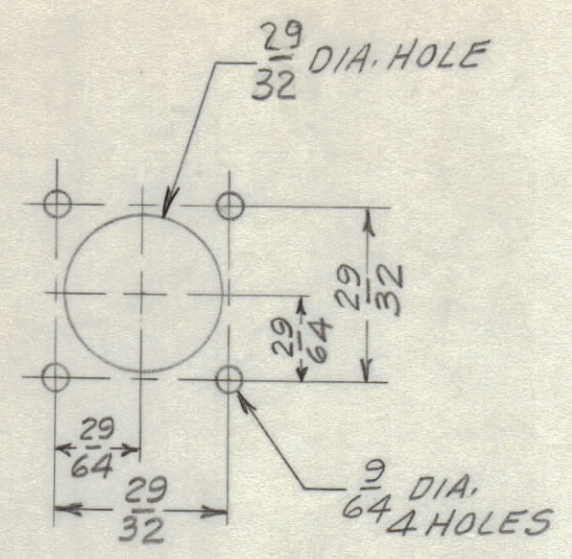


ZONE	X2	④'E' HLS CHD TO 'K' HLS, ②'F' HLS CHD TO 'E' HLS	1-27-46	-A-	Jc		
	SYM	DESCRIPTION	DATE	E.M.N. NO.	DRAFT	CHKD	APPD
	X1	②'A' HLS (2 BUES FASTENERS) DELETED	1-4-46	-	CDL		
	Ø	ORIGINAL RELEASE FOR PRODUCTION	3/3/66				
	A	ADDED REF	5-18-71	20364	RF	(a)	

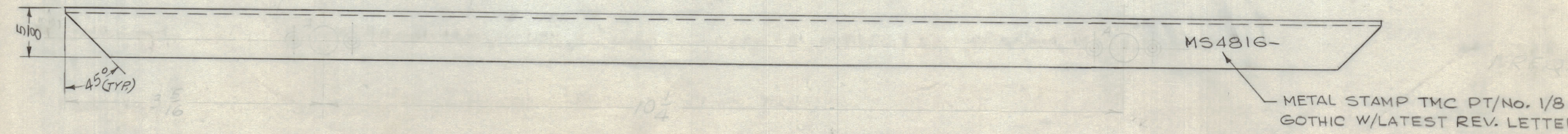
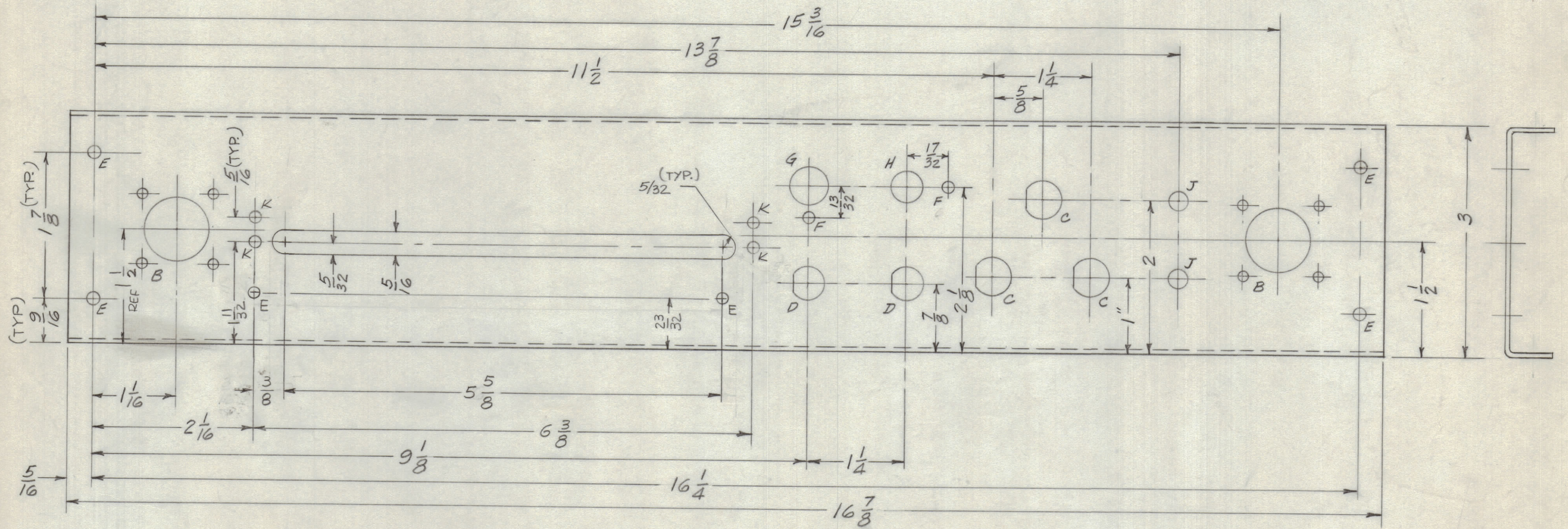
DRILL & SINK FROM TOP OF PANEL



DETAIL-B

DETAIL-C

DETAIL-D



OPPOSITE SIDE IDENTICAL

LD 2461-CDN3A
REF: LD 2023-CDN3

HOLE	DESCRIPTION	REQ
A	DELETED	4
B	SEE DETAIL	2
C	SEE DETAIL	3
D	SEE DETAIL	2
E	1/64 DIA	2
F	5/32 DIA	4
G	1/2 DIA	1
H	13/32 DIA.	1
J	1/4 DIA.	2
K	9/64 DIA.	4

UNLESS OTHERWISE SPECIFIED:

1. USE MATERIAL THICKNESS FOR MAXIMUM RADIUS ON ALL BENDS
2. ALL ANGULAR BENDS 90 DEGREES
3. REMOVE ALL BURRS AND SHARP EDGES
4. MOUNT INSERTS AFTER FINISHING

REQ'D.	ITEM	PART NUMBER	DESCRIPTION	SYMBOL
POSE LIST OF MATERIAL SK 3226 MS 8				
MATERIAL		.063 ALUMINUM 5052 H-32		
FINISH		5404 YELLOW IRIDITE		
TITLE		THE TECHNICAL MATERIEL CORP. MAMARONECK, NEW YORK		
DRAWN		D.A.C.		
CHECKED		JCB		
ELECT. DES.		DATE 1-18-46		
MECH. DES.		DATE 2-4-46		
DATE		12-29-65		
FINAL APPROVAL		[Signature]		
DATE		3/4/66		
SHEET		MS4816 A		
REV. LTR.		A		

QTY./UNIT	CDN-3	MODEL USED ON	ASS'Y. NO.
SCALE	1:1	CODE	Δ

THE CONTENTS OF THIS DRAWING ARE THE EXCLUSIVE PROPERTY OF THE TECHNICAL MATERIEL CORP. ITS UNAUTHORIZED USE OR REPRODUCTION IN WHOLE OR IN PART IS STRICTLY FORBIDDEN.

NOTES