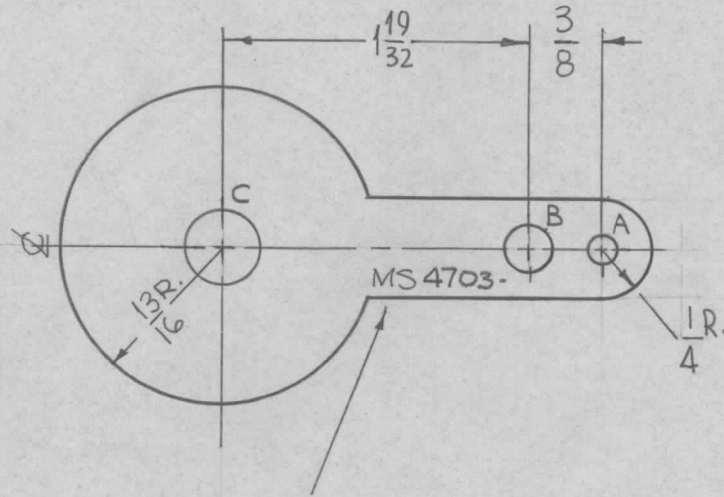


REQ. PER UNIT	USED ON			MS4703 ϕ
	MODEL	ASS'Y. NO.	DATE	
1	RFTA-1		7-26-65	



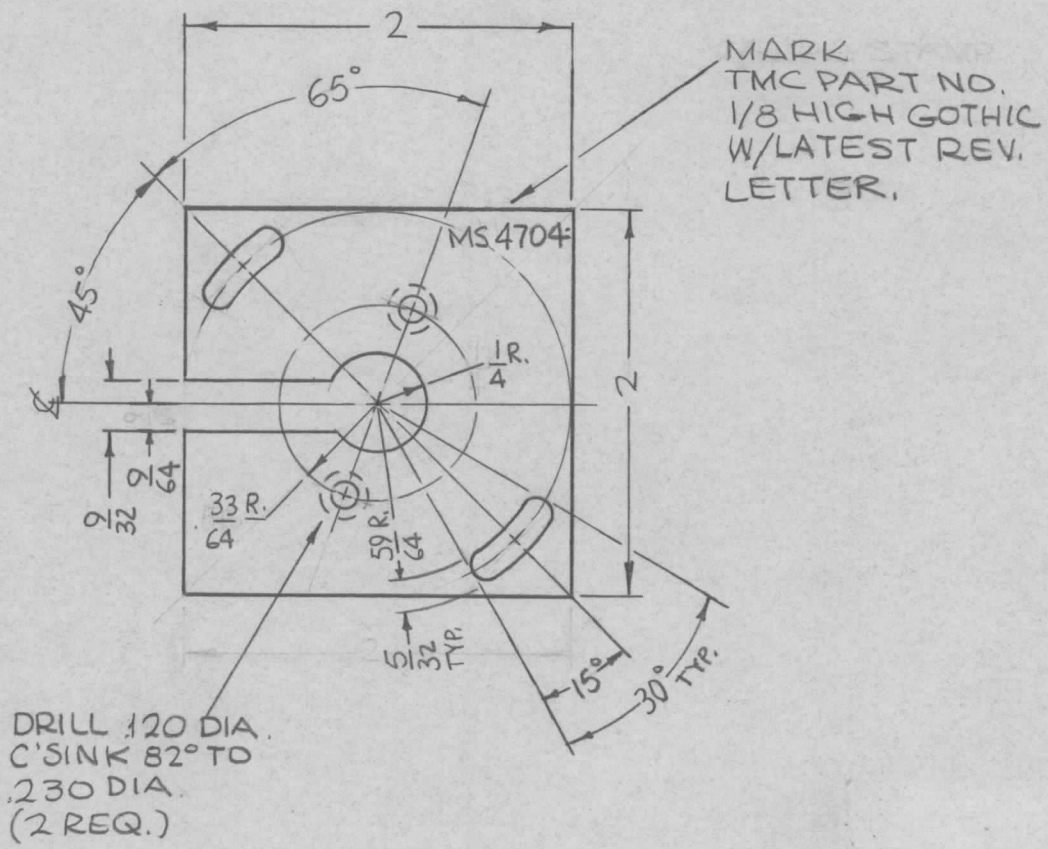
HOLES:	REQ
A ~ 9/64 DIA.	1
B ~ 15/64 DIA.	1
C ~ 3/8 DIA.	1

NOTE:
REMOVE ALL BURRS AND SHARP EDGES

MARK TMC PART NO.
1/8 HIGH GOTHIC
W/LATEST REV. LETTER.

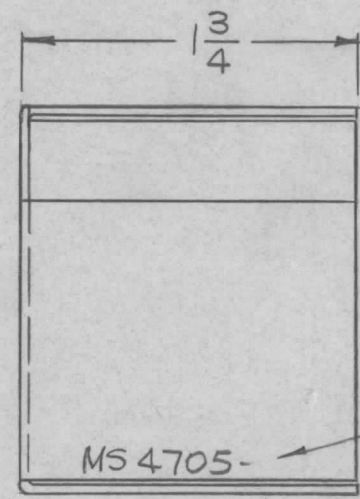
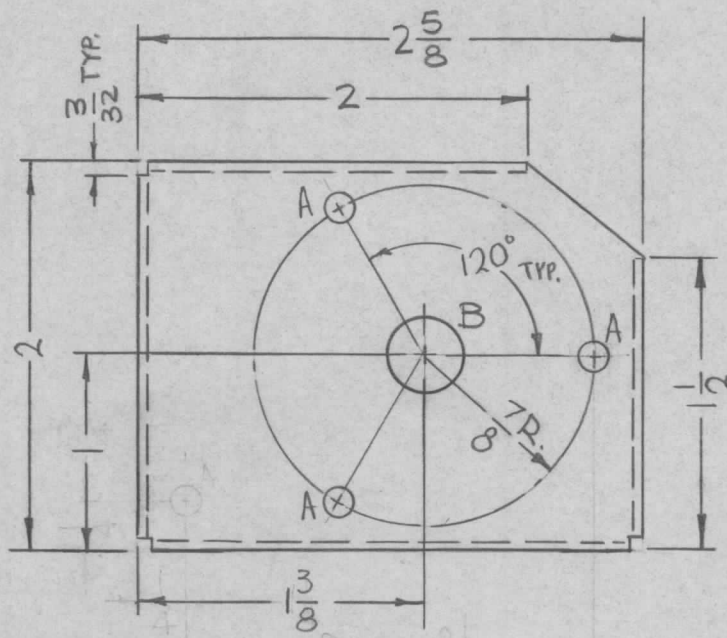
REQ.	ITEM	PART NO.	F. BUDETTI DESCRIPTION			SYMBOL	
			.031 THICK			THE TECHNICAL MATERIEL CORP. MAMARONECK, NEW YORK	
			STOCK SIZE				
			COPPER				
			MATERIAL			WIPER, CONTACT	
			COLD ROLLED		<i>MB</i>	<i>JCB</i>	
			TYPE & TEMPER	HEAT TREAT. SPEC.	DRAWN	CHECKED	FINAL APPROVAL
			S-245 SILVER PLATE			<i>aa</i>	<i>MMH</i>
			S-423 18-P SILVER KOTE				
			FINISH & SPEC. NO.	ELEC. DES. APP.	MECH. DES. APP.		
							MS4703 ϕ

REQ. PER UNIT	USED ON			MS4704 \emptyset
	MODEL	ASS'Y. NO.	DATE	
1	RFTA-1		7-26-65	



REQ.	ITEM	PART NO.	F. BUDETTI DESCRIPTION			SYMBOL
		.081 THICK	THE TECHNICAL MATERIEL CORP.			
		STOCK SIZE	MAMARONECK, NEW YORK			
\emptyset	ORIGINAL RELEASE	2/15/66	ALUMINUM			PLATE, SWITCH
SYM	DESCRIPTION	DATE	CH. NO.	DRAFTS	CHECKER	ENG. APP.
UNLESS OTHERWISE SPECIFIED DIMENSIONS ARE IN INCHES AND INCLUDE CHEMICALLY APPLIED OR PLATED FINISHES		SCALE	1:1			
DECIMALS	TOLERANCES	FRACTIONS	CODE			
.X \pm .05		\pm 1/64	A			
.XX \pm .01		ANGLES				
.XXX \pm .005		\pm 0° 30'				
		5052-H32	TYPE & TEMPER	HEAT TREAT. SPEC.	DRAWN	CHECKED
		S404 YEL. IRIDITE				
		FINISH & SPEC. NO.	ELEC. DES. APP.	MECH. DES. APP.	MS4704 \emptyset	

REQ. PER UNIT	USED ON			MS4705	Ø
	MODEL	ASS'Y. NO.	DATE		
1	TST-10K	AF105	7-26-65		



HOLES:
 A ~ 9/64 D. (3 REQ.)
 B ~ 3/8 D. (1 REQ.)

MARK TMC PART NO
 1/8 HIGH GOTHIC
 W/LATEST REV.
 LETTER.

- UNLESS OTHERWISE SPECIFIED:
1. USE MATERIAL THICKNESS FOR MAXIMUM RADIUS ON ALL BENDS
 2. ALL ANGULAR BENDS 90 DEGREES
 3. REMOVE ALL BURRS AND SHARP EDGES

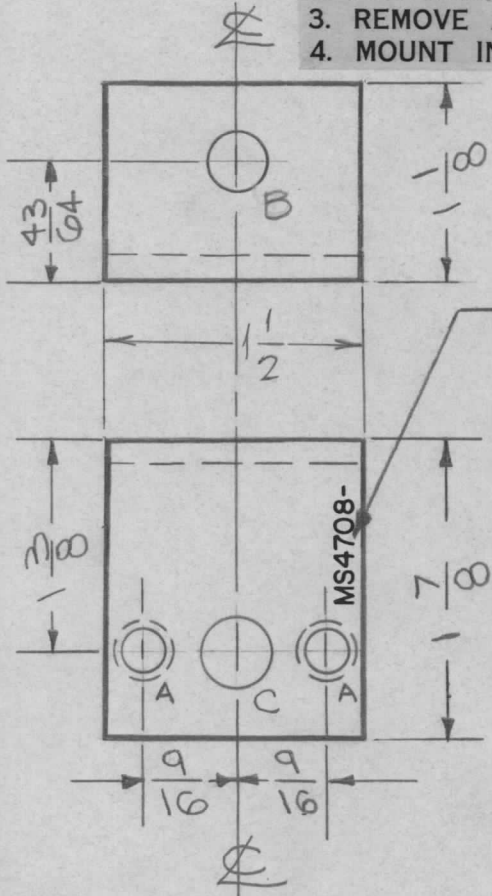
REQ.	ITEM	PART NO.	F. BUDETTI	DESCRIPTION	SYMBOL	
		.064 THICK		THE TECHNICAL MATERIEL CORP.		
		STOCK SIZE		MAMARONECK. NEW YORK		
Ø	ORIGINAL RELEASE FOR PRODUCTION	3-23-66	Jc	COVER, CODED WAFER		
X1	1A, 7/8R. ADDED	2-14-66	X1			
SYM	DESCRIPTION	DATE	CH. NO.	DRAFTS	CHECKER	ENG. APP.
UNLESS OTHERWISE SPECIFIED DIMENSIONS ARE IN INCHES AND INCLUDE CHEMICALLY APPLIED OR PLATED FINISHES		SCALE 1:1		5052-H3Z		
DECIMALS .X ± .05 .XX ± .01 .XXX ± .005		FRACTIONS ± 1/64 ANGLES ± 0° 30'		TOLERANCES		CODE A
				5404 YEL. IRIDITE		
				FINISH & SPEC. NO.		ELEC. DES. APP. MECH. DES. APP.
				MS4705		Ø

UNLESS OTHERWISE SPECIFIED:

1. USE MATERIAL THICKNESS FOR MAXIMUM RADIUS ON ALL BENDS
2. ALL ANGULAR BENDS 90 DEGREES
3. REMOVE ALL BURRS AND SHARP EDGES
4. MOUNT INSERTS AFTER FINISHING

REQ. PER UNIT	USED ON		
	MODEL	ASS'Y. NO.	DATE
1	GPT-200K	AX395	8-4-65

MS4708 \emptyset



METAL STAMP TMC PART NO. 1/8 HIGH GOTHIC, W/LATEST REVISION LETTER.

NOTE:

1. MOUNT ITEM 1 IN "A" HOLES AS SHOWN.
2. BEARING BBI18-3 TO BE PRESS FIT AS SHOWN.

HOLE LEGEND		
HOLE	DESCRIPTION	REQ'D
A	.221-.224 DIA.	2
B	5/16 DIA.	1
C	.377 \pm .001 (REFER TO DRWG)	1

1	2	BBI18-3	BEARING	C
2	1	NT-129-832-6	NUT, ROUND SWAGE TYPE	A

REQ.	ITEM	PART NO.	BUDETTI DESCRIPTION	SYMBOL						
		1/8 TH'K	THE TECHNICAL MATERIEL CORP. MAMARONECK. NEW YORK							
		ALUMINUM	BRACKET, SHAFT ALIGNMENT ASS'Y (CAPACITOR)							
		5052-H32	<table border="1"> <tr> <td>DRAWN</td> <td>CANZA</td> <td>CHECKED</td> <td>JOE</td> <td>FINAL APPROVAL</td> <td>MS4708 \emptyset</td> </tr> </table>	DRAWN	CANZA	CHECKED	JOE	FINAL APPROVAL	MS4708 \emptyset	
DRAWN	CANZA	CHECKED	JOE	FINAL APPROVAL	MS4708 \emptyset					
		S404-YEL IRIDITE								
		FINISH & SPEC. NO.	ELEC. DES. APP.	MECH. DES. APP.						

SYM	DESCRIPTION	DATE	CH. NO.	DRAFTS	CHECKER	ENG. APP.
\emptyset	ORIGINAL RELEASE FOR PRODUCTION	9/12/65	\emptyset	H.V.V.		

UNLESS OTHERWISE SPECIFIED DIMENSIONS ARE IN INCHES AND INCLUDE CHEMICALLY APPLIED OR PLATED FINISHES

SCALE

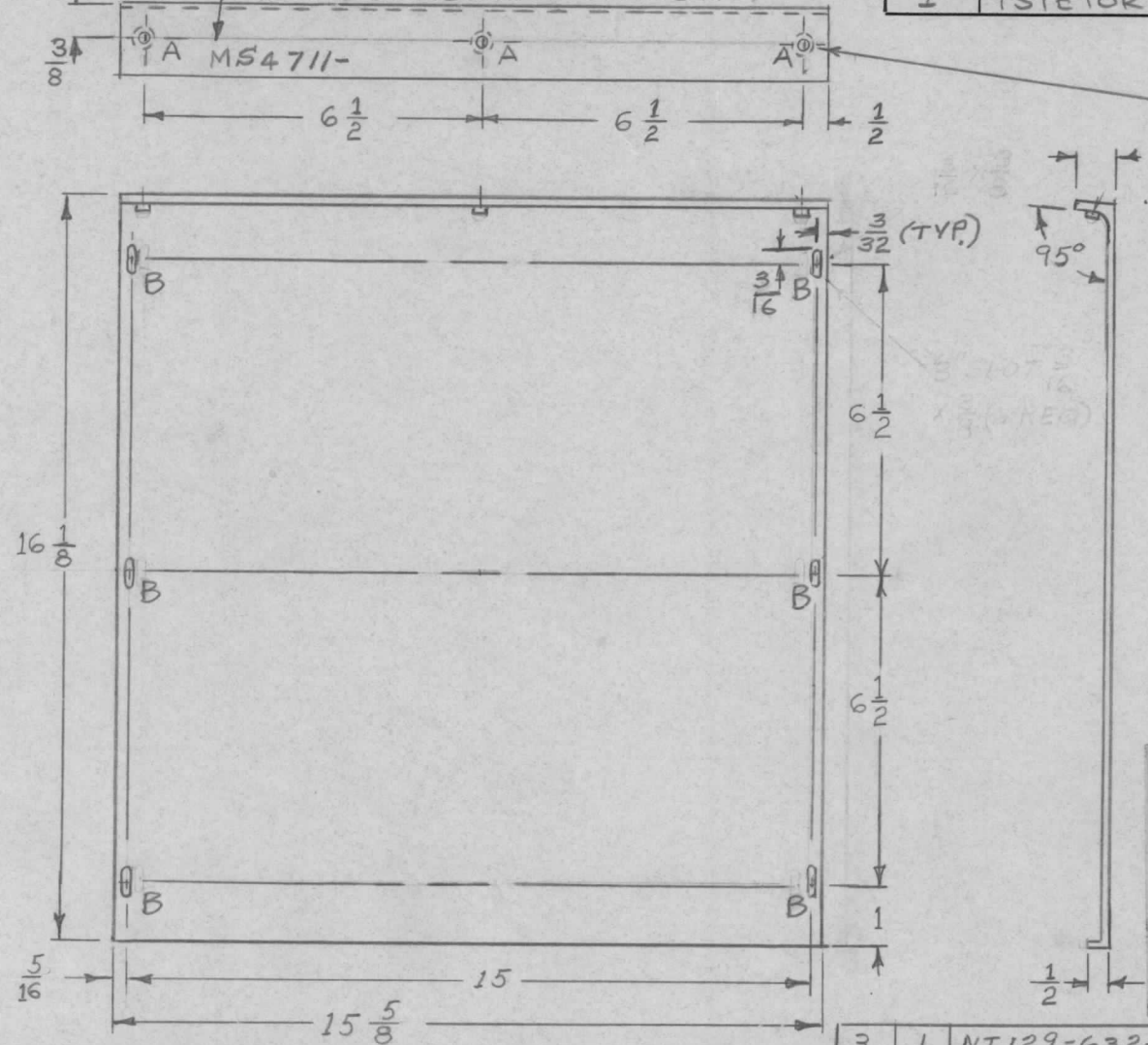
DECIMALS	FRACTIONS	CODE
.X \pm .05	\pm 1/64	
.XX \pm .01	ANGLES \pm 0° 30'	
.XXX \pm .005		

TOLERANCES

METAL STAMP TMC PT. NO. 1/8 GOTHIC
W/LATEST REVISION LETTER

REQ. PER UNIT	USED ON		
	MODEL	ASS'Y. NO.	DATE
1	TSTE10K		

MS4711 Ø



HOLES	REQ
A-.191-.194 DIA.	3
B- 3/16 X 3/8 SLOT	6

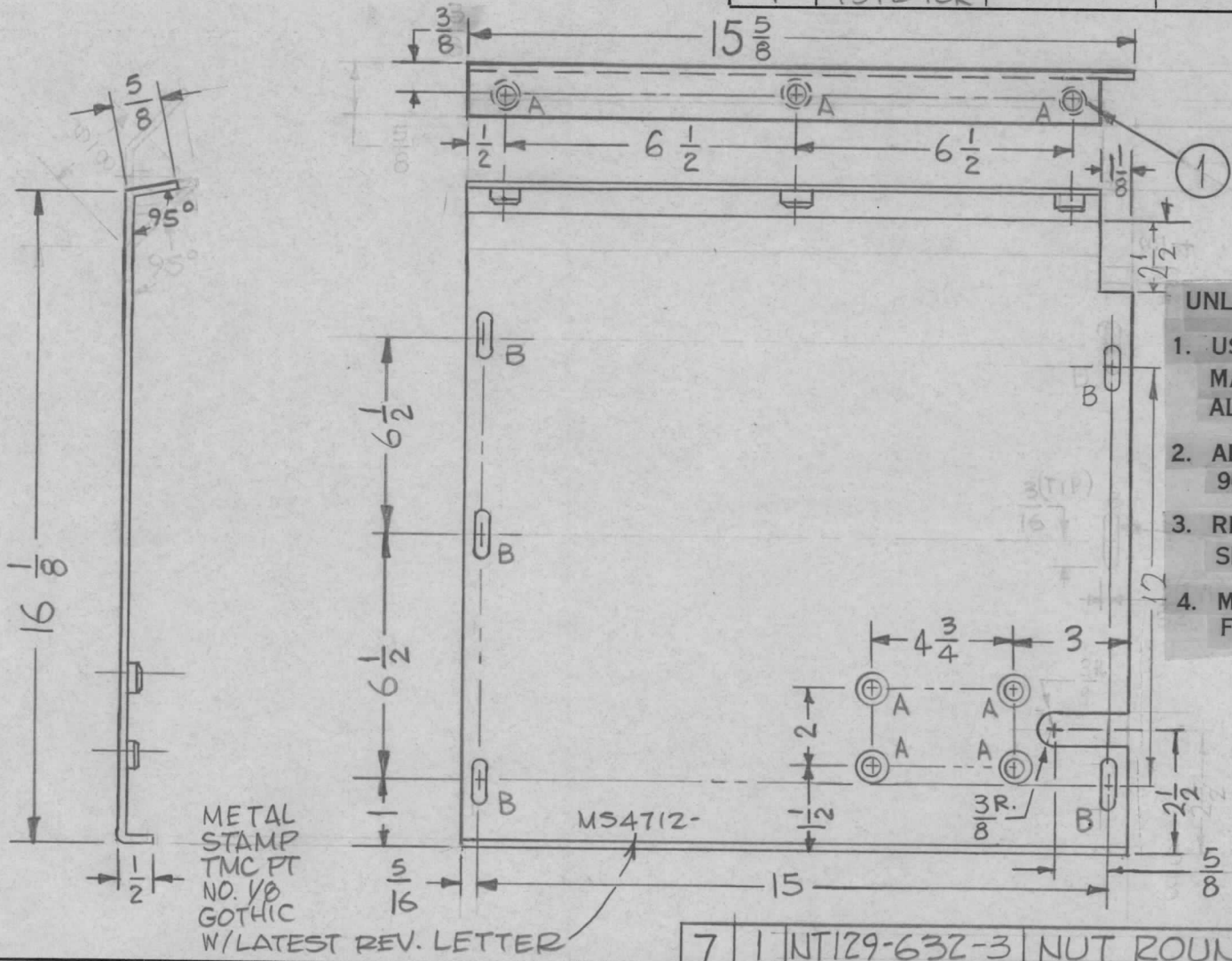
UNLESS OTHERWISE SPECIFIED:

1. USE MATERIAL THICKNESS FOR MAXIMUM RADIUS ON ALL BENDS
2. ALL ANGULAR BENDS 90 DEGREES
3. REMOVE ALL BURRS AND SHARP EDGES
4. MOUNT INSERTS AFTER FINISHING

		3	1	NT129-632-3	NUT ROUND SWAGE TYPE.			
		REQ.	ITEM	PART NO.	DESCRIPTION			SYMBOL
		.064 THICK			THE TECHNICAL MATERIEL CORP.			
		STOCK SIZE			MAMARONECK, NEW YORK			
		ALUMINUM			SHIELD, LEFT SIDE			
		MATERIAL						
Ø	ORIG. REL. FOR PROD.	9-16-68	Ø	R.G.	JAD			
SYM	DESCRIPTION	DATE	CH. NO.	DRAFTS	CHECKER	ENG. APP.		
UNLESS OTHERWISE SPECIFIED DIMENSIONS ARE IN INCHES AND INCLUDE CHEMICALLY APPLIED OR PLATED FINISHES		SCALE DO NOT SCALE						
DECIMALS	TOLERANCES	FRACTIONS	CODE					
.X ± .05		± 1/64						
.XX ± .01		ANGLES						
.XXX ± .005		± 0° 30'						
		5052-H32		TYPE & TEMPER		HEAT TREAT. SPEC.		DRAWN
		S404-IRIDIOTE, 14-2 ALCOAT		FINISH & SPEC. NO.		ELEC. DES. APP.		MECH. DES. APP.
						SGT JAD		MS4711 Ø

REQ. PER UNIT	USED ON		
	MODEL	ASS'Y. NO.	DATE
1	TSTE 10K		

MS4712 Ø



HOLES REQ.
 A-.191-.194 DIA. 7
 B-3/16 X 3/8 SLOT 5

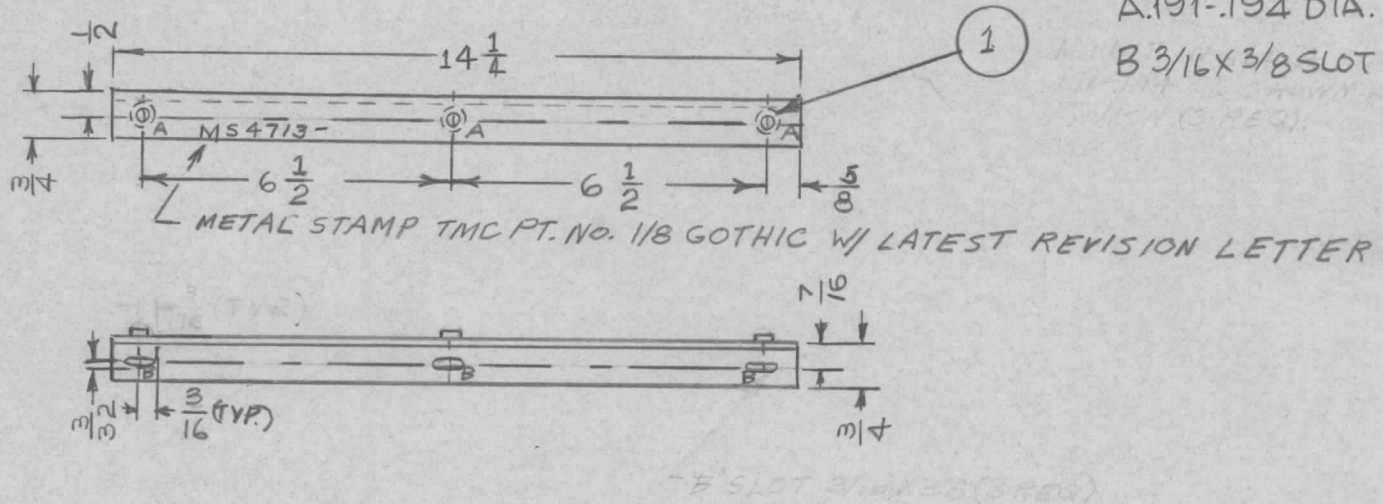
- UNLESS OTHERWISE SPECIFIED:
1. USE MATERIAL THICKNESS FOR MAXIMUM RADIUS ON ALL BENDS
 2. ALL ANGULAR BENDS 90 DEGREES
 3. REMOVE ALL BURRS AND SHARP EDGES
 4. MOUNT INSERTS AFTER FINISHING

7	1	NT129-632-3	NUT ROUND, SWAGE TYPE	A
REQ. ITEM	PART NO.		DESCRIPTION	SYMBOL
	.064 THK		THE TECHNICAL MATERIEL CORP. MAMARONECK, NEW YORK	SHIELD, RIGHT SIDE
	STOCK SIZE			
	ALUMINUM			
	MATERIAL			
	5052-H32		SG	JHle
	TYPE & TEMPER	HEAT TREAT. SPEC.	DRAWN	CHECKED
	YELL IRIDITE S404		da	ll
	FINISH & SPEC. NO.	ELEC. DES. APP.	MECH. DES. APP.	
				MS4712 Ø

Ø	ORIG. REL. FOR PROD.	9-16-68	Ø	R.G.	JHle	
X2	3/8R. SLOT ADDED	8-24-65	X2		ll	
X1	NOTCH WAS 1/8 X 1/34, Ø'B' SLOT DELETED, Ø'B' SLOT RELOCATED	8-3-65	AA	JC	ll	
SYM	DESCRIPTION	DATE	CH. NO.	DRAFTS	CHECKER	ENG. APP.
UNLESS OTHERWISE SPECIFIED DIMENSIONS ARE IN INCHES AND INCLUDE CHEMICALLY APPLIED OR PLATED FINISHES		SCALE				
		Do Not Scale				
DECIMALS .X ± .05 .XX ± .01 .XXX ± .005	TOLERANCES	FRACTIONS ± 1/64 ANGLES ± 0° 30'	CODE A			

REQ. PER UNIT	USED ON			MS4713	Ø
	MODEL	ASS'Y. NO.	DATE		
	TSTE10K				

HOLES REQ
 A.191-.194 DIA. 3
 B 3/16 X 3/8 SLOT 3



UNLESS OTHERWISE SPECIFIED:

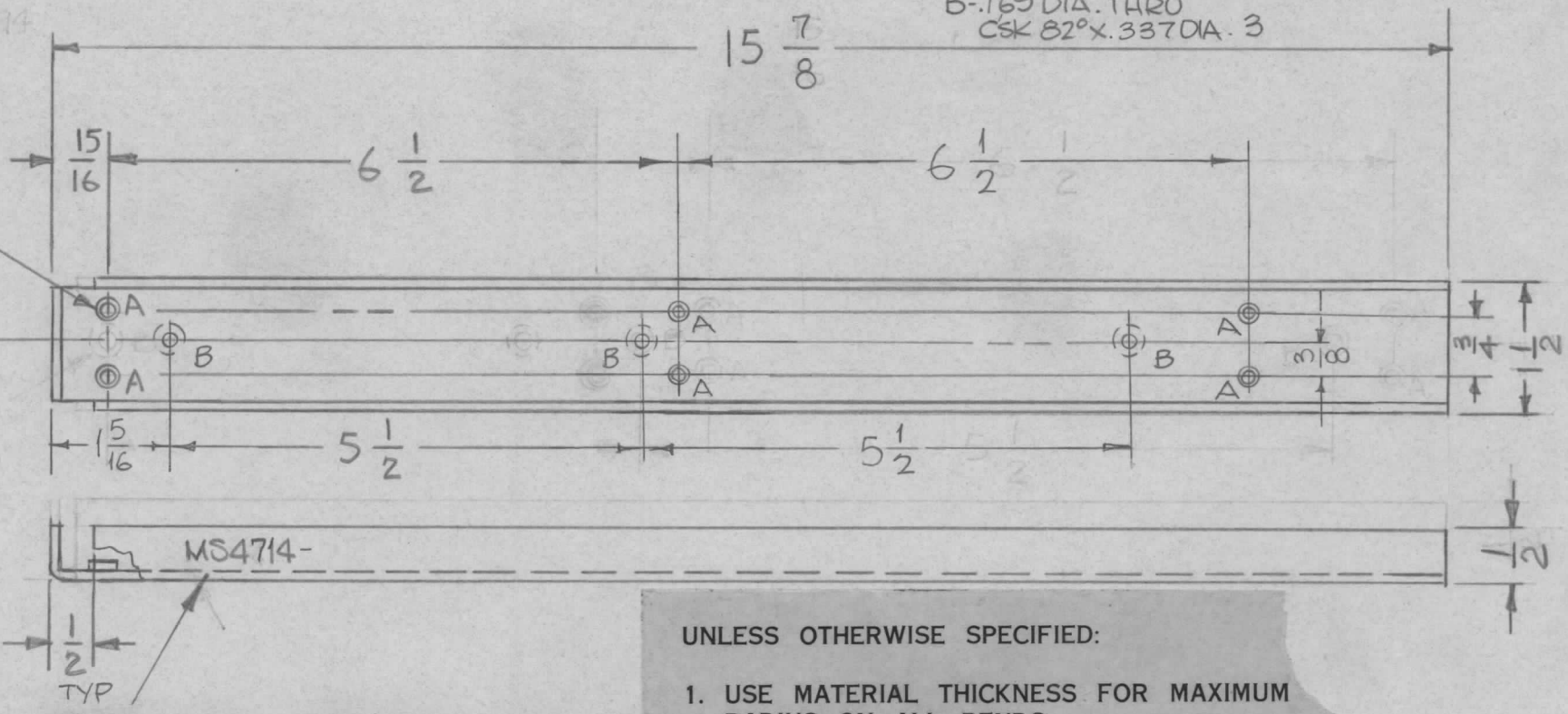
1. USE MATERIAL THICKNESS FOR MAXIMUM RADIUS ON ALL BENDS
2. ALL ANGULAR BENDS 90 DEGREES
3. REMOVE ALL BURRS AND SHARP EDGES
4. MOUNT INSERTS AFTER FINISHING

							3	1	NT129-632-3	NUT ROUND, SWAGE TYPE.			
							REQ. ITEM		PART NO.	DESCRIPTION		SYMBOL	
									.064 THK.	THE TECHNICAL MATERIEL CORP. MAMARONECK, NEW YORK			
									STOCK SIZE				
									ALUMINUM	BRACKET MOUNTING, SHIELD			
									MATERIAL	LEFT SIDE			
									5052-H32	SG	Handwritten initials	Handwritten initials	
									TYPE & TEMPER	HEAT TREAT. SPEC.	DRAWN	CHECKED	FINAL APPROVAL
									YELL IRIDITE S404		Handwritten initials	Handwritten initials	MS4713
									FINISH & SPEC. NO.	ELEC. DES. APP.	MECH. DES. APP.		

REQ. PER UNIT	USED ON			MS4714
	MODEL	ASS'Y. NO.	DATE	
1	TSTE10K			

① MOUNT IN ALL "A" HOLES AS SHOWN

HOLES REQ
 A-.191-.194 DIA 6
 B-.169 DIA. THRU
 CSK 82° X .337 DIA. 3



.337 DIA CSK
 EXT TO .169
 3" B HOLES

UNLESS OTHERWISE SPECIFIED:

1. USE MATERIAL THICKNESS FOR MAXIMUM RADIUS ON ALL BENDS
2. ALL ANGULAR BENDS 90 DEGREES
3. REMOVE ALL BURRS AND SHARP EDGES
4. MOUNT INSERTS AFTER FINISHING

METAL STAMP TMC PART NO. 1/8
 HIGH GOTHIC W/LATEST
 REV. LETTER

6	1	NT129-632-3	NUT, PLAIN, SPLINE TYPE	
REQ. ITEM	PART NO.		DESCRIPTION	SYMBOL
	.064 THICK		THE TECHNICAL MATERIEL CORP. MAMARONECK, NEW YORK	
	STOCK SIZE			
	ALUMINUM		BRACKET, SHIELD MTG.	
	MATERIAL			
UNLESS OTHERWISE SPECIFIED DIMENSIONS ARE IN INCHES AND INCLUDE CHEMICALLY APPLIED OR PLATED FINISHES			SCALE	DO NOT SCALE
DECIMALS	TOLERANCES	FRACTIONS	CODE	
.X ± .05 .XX ± .01 .XXX ± .005		± 1/64 ANGLES ± 0° 30'	A	
5052-H32		HEAT TREAT. SPEC.	DRAWN	CHECKED
S404 YEL. IRIDITE			SG	JAL
FINISH & SPEC. NO.		ELEC. DES. APP.	MECH. DES. APP.	
			MS4714	

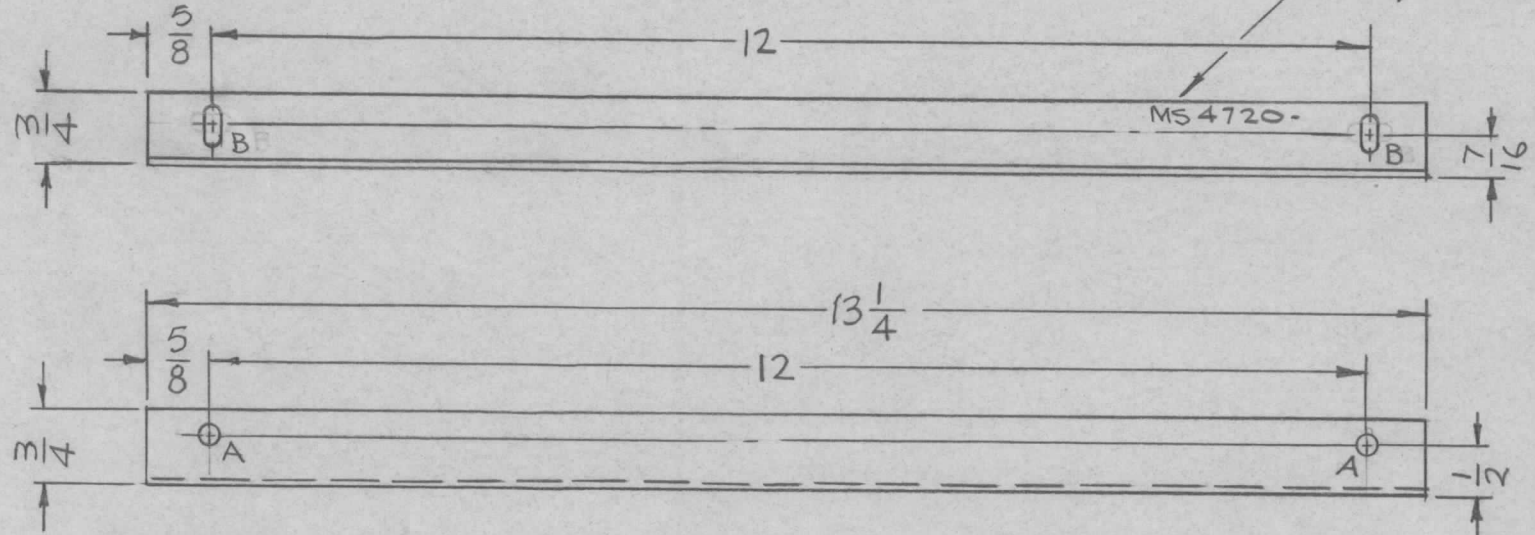
Ø	ORIG. REL. FOR PROD.	9-16-68	Ø	R.G.	JAL	
X2	STOCK SIZE, MATERIAL, ADDED TYPE & TEMP, FINISH ADDED	9-1-65	X2	JAL	JAL	
X1	ON ③ "B" HOLE 1 5/16 DIA WAS 15/16, 15 1/8 DIA WAS 15 1/16	8-3-65	JAL	JC	JAL	
SYM	DESCRIPTION	DATE	CH. NO.	DRAFTS	CHECKER	ENG. APP.

REQ. PER UNIT	USED ON			MS4720	Ø
	MODEL	ASS'Y. NO.	DATE		
1	TST-10K		8-3-65		

HOLES:

A ~ .191-.194 DIA. — 2REQ.
 B ~ 3/16 x 3/8 SLOT — 2REQ.

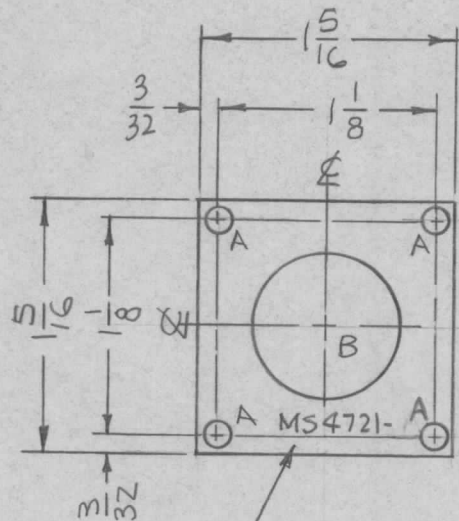
MARK TMC PART NO.
 1/8 HIGH GOTHIC
 W/LATEST REV. LETTER.



- UNLESS OTHERWISE SPECIFIED:**
1. USE MATERIAL THICKNESS FOR MAXIMUM RADIUS ON ALL BENDS
 2. ALL ANGULAR BENDS 90 DEGREES
 3. REMOVE ALL BURRS AND SHARP EDGES
 4. MOUNT INSERTS AFTER FINISHING

						2	1	NT129-632-4	NUT, PLAIN, SPLINE	A
						REQ. ITEM		PART NO.	F. BUDETTI DESCRIPTION	SYMBOL
Ø	ORIGINAL RELEASE	3/15/66				.064 THICK		THE TECHNICAL MATERIEL CORP.		
X1	DIRECTION OF SLOTS CHANGED	8-13-65	X1			STOCK SIZE		MAMARONECK, NEW YORK		
						ALUMINUM		BRACKET, MTG. SHIELD		
SYM	DESCRIPTION	DATE	CH. NO.	DRAFTS	CHECKER	ENG. APP.	MATERIAL			
UNLESS OTHERWISE SPECIFIED		SCALE				5052-H32				
DIMENSIONS ARE IN INCHES AND INCLUDE		1/2:1				TYPE & TEMPER	HEAT TREAT. SPEC.	DRAWN	CHECKED	FINAL APPROVAL
CHEMICALLY APPLIED OR PLATED FINISHES						S404 YEL IRIDITE				
DECIMALS	TOLERANCES	FRACTIONS	CODE	FINISH & SPEC. NO.						
.X ± .05		± 1/64	A	ELEC. DES. APP.		MECH. DES. APP.		MS4720 Ø		
.XX ± .01		ANGLES								
.XXX ± .005		± 0° 30'								

REQ. PER UNIT	USED ON			MS4721	Ø
	MODEL	ASS'Y. NO.	DATE		
1	TST-10K		8-2-65		



HOLES:

A ~ 1/8 DIA. (4 REQ.)

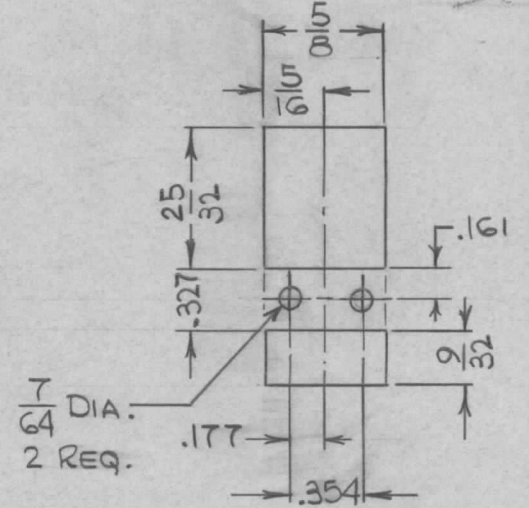
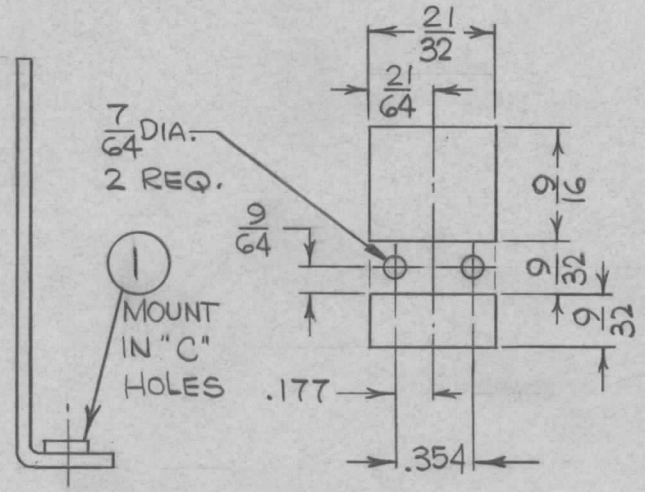
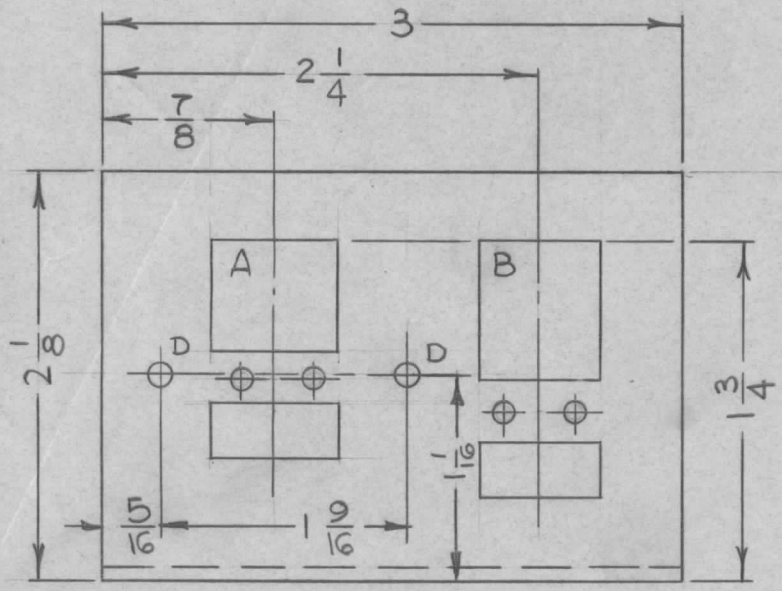
B ~ 3/4 DIA. (1 REQ.)

MARK
TMC PART NO.
1/8 HIGH GOTHIC
W/LATEST REV.
LETTER.

REQ.	ITEM	PART NO.	F. BUDETTI DESCRIPTION				SYMBOL
Ø		.064 THICK	THE TECHNICAL MATERIEL CORP.				
		STOCK SIZE	MAMARONECK, NEW YORK				
X1	ORIGINAL RELEASE	ALUMINUM	PLATE, COAXIAL CABLE				
	PER UNIT WAS, 2 REQ.						
SYM	DESCRIPTION	DATE	CH. NO.	DRAFTS	CHECKER	ENG. APP.	
	UNLESS OTHERWISE SPECIFIED DIMENSIONS ARE IN INCHES AND INCLUDE CHEMICALLY APPLIED OR PLATED FINISHES	SCALE	1:1				
	DECIMALS .X ± .05 .XX ± .01 .XXX ± .005	TOLERANCES	FRACTIONS ± 1/64 ANGLES ± 0° 30'	CODE	A		
		5052-H32					
		TYPE & TEMPER	HEAT TREAT. SPEC.	DRAWN	CHECKED	FINAL APPROVAL	
		S404 YEL. IRIDITE					
		FINISH & SPEC. NO.	ELEC. DES. APP.	MECH. DES. APP.			
							MS4721 Ø

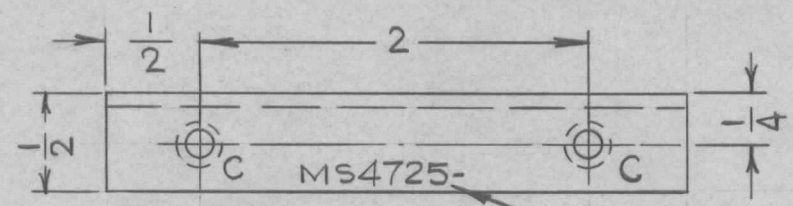
REQ. PER UNIT	USED ON		
	MODEL	ASS'Y. NO.	DATE
1	VLRE-1		8-9-65

MS4725 Ø



DETAIL "A"

DETAIL "B"



HOLE	DESCRIPTION	REQ.
A	SEE DETAIL	1
B	SEE DETAIL	1
C	.191 - .194 DIA.	2
D	1/8 DIA.	2

- UNLESS OTHERWISE SPECIFIED:
1. USE MATERIAL THICKNESS FOR MAXIMUM RADIUS ON ALL BENDS
 2. ALL ANGULAR BENDS 90 DEGREES
 3. REMOVE ALL BURRS AND SHARP EDGES
 4. MOUNT INSERTS AFTER FINISHING

METAL STAMP TMC PART NO. 1/8 HIGH GOTHIC. W/ LATEST REV. LETTER

2	1	NT-129-632-4	NUT, ROUND, SWAGE	C
REQ.	ITEM	PART NO.	M. ZETENA DESCRIPTION	SYMBOL
		.080	THE TECHNICAL MATERIEL CORP.	
		STOCK SIZE	MAMARONECK, NEW YORK	
		ALUMINUM	BRACKET, MOUNTING, RELAY	
		MATERIAL		
		5052-H32	H. AUSTIN	JCB
		TYPE & TEMPER	HEAT TREAT. SPEC.	FINAL APPROVAL
		S404-YEL. IRIDITE		MS4725 Ø
		FINISH & SPEC. NO.	ELEC. DES. APP.	MECH. DES. APP.

SYM	DESCRIPTION	DATE	CH. NO.	DRAFTS	CHECKER	ENG. APP.
	ORIGINAL RELEASE FOR PRODUCTION	8/19/65	#	E		

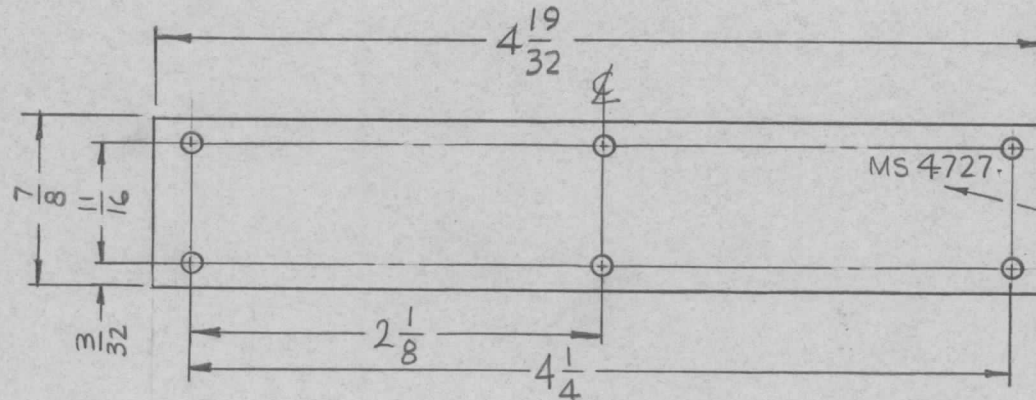
UNLESS OTHERWISE SPECIFIED DIMENSIONS ARE IN INCHES AND INCLUDE CHEMICALLY APPLIED OR PLATED FINISHES

SCALE 1:1

DECIMALS	FRACTIONS	CODE
.X ± .05	± 1/64	A
.XX ± .01	ANGLES	
.XXX ± .005	± 0° 30'	

REQ. PER UNIT	USED ON			MS4727 ϕ
	MODEL	ASS'Y. NO.	DATE	
1	RFTA-1		8-11-65	

HOLES:
7/64 DIA. 6 REQ.



MARK TMC P/N
1/8 HIGH GOTHIC
W/LATEST REV.
LETTER.

REQ.	ITEM	PART NO.	F. BUDETTI DESCRIPTION				SYMBOL
		.032 THICK	THE TECHNICAL MATERIEL CORP.				
		STOCK SIZE	MAMARONECK. NEW YORK				
		ALUMINUM	COVER, BOTTOM, GEAR BOX				
		MATERIAL					
		5052-H32					
		TYPE & TEMPER	HEAT TREAT. SPEC.	DRAWN	CHECKED	FINAL APPROVAL	
		5404 YEL. IRIDITE		00 5/19/66		MS4727 ϕ	
		FINISH & SPEC. NO.	ELEC. DES. APP.	MECH. DES. APP.			

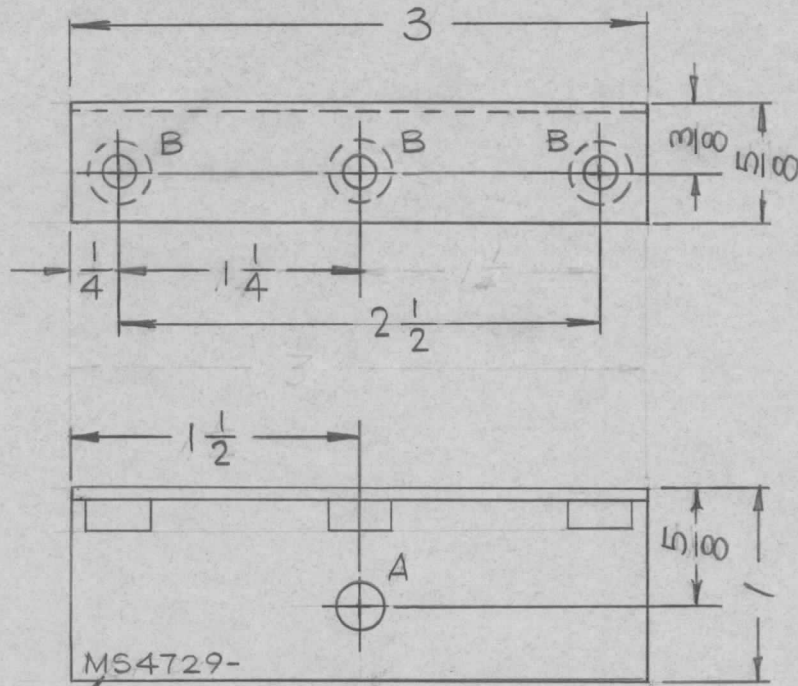
UNLESS OTHERWISE SPECIFIED DIMENSIONS ARE IN INCHES AND INCLUDE CHEMICALLY APPLIED OR PLATED FINISHES	SCALE				
	1:1				
DECIMALS .X \pm .05 .XX \pm .01 .XXX \pm .005	TOLERANCES	FRACTIONS \pm 1/64 ANGLES \pm 0° 30'	CODE		
			A		

ORIGINAL RELEASE FOR PRODUCTION	5/19/66	ϕ	CV			
SYM	DATE	CH. NO.	DRAFTS	CHECKER	ENG. APP.	

HOLE	DESCRIPTION	REQ.
A	15/64 DIA.	1
B	.161-.164 DIA.	3

REQ. PER UNIT	USED ON		
	MODEL	ASS'Y. NO.	DATE
1	RARB-1	A5129	9 AUG 65
1	RASB-1	A5129	

MS4729 \emptyset



UNLESS OTHERWISE SPECIFIED:
 1. USE MATERIAL THICKNESS FOR MAXIMUM RADIUS ON ALL BENDS
 2. ALL ANGULAR BENDS 90 DEGREES
 3. REMOVE ALL BURRS AND SHARP EDGES
 4. MOUNT INSERTS AFTER FINISHING



MOUNT IN ALL "B" HOLES AS SHOWN

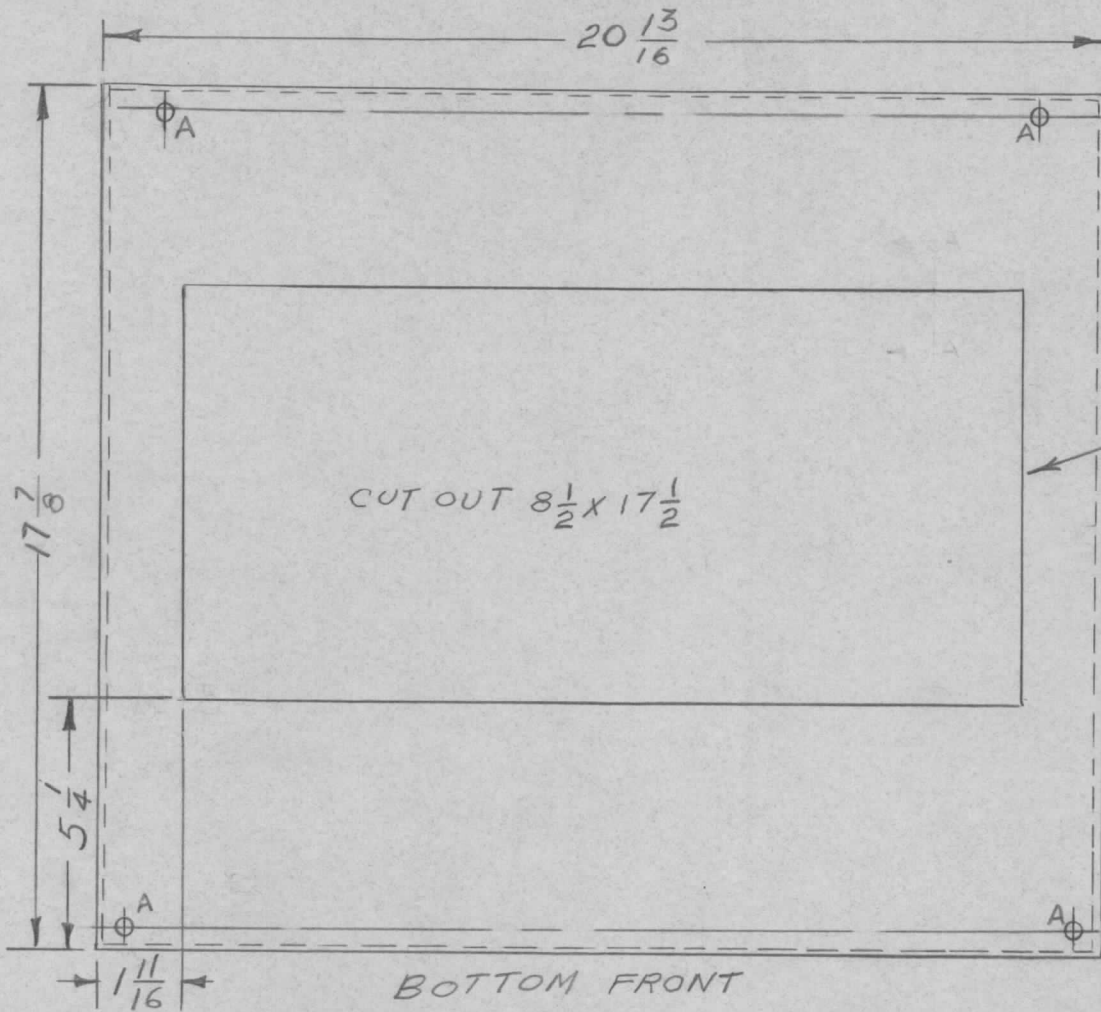
METAL STAMP TMC PART NO. 1/8 HIGH GOTHIC. W/LATEST REV. LETTER

METAL STAMP TMC PART NO. 1/8 HIGH GOTHIC. W/LATEST REV. LETTER

3	1	NT129-440-4	NUT, PLAIN, SPLINE	B
REQ. ITEM	PART NO.		DESCRIPTION	SYMBOL
	.081 THK		LANGER REF: SK10053	
	STOCK SIZE		THE TECHNICAL MATERIEL CORP.	
	ALUMINUM		MAMARONECK. NEW YORK	
	MATERIAL		BRACKET, DIODE MTG.	
	5052-H32	472	ELM	JCB
	TYPE & TEMPER	HEAT TREAT. SPEC.	DRAWN	CHECKED
	5404 YEL. IRIDIOTE			
	FINISH & SPEC. NO.	ELEC. DES. APP.	MECH. DES. APP.	
				MS4729 \emptyset

\emptyset	ORIGINAL RELEASE	10/26/65	\emptyset			
SYM	DESCRIPTION	DATE	CH. NO.	DRAFTS	CHECKER	ENG. APP.
UNLESS OTHERWISE SPECIFIED DIMENSIONS ARE IN INCHES AND INCLUDE CHEMICALLY APPLIED OR PLATED FINISHES		SCALE	1:1			
DECIMALS	TOLERANCES	FRACTIONS	CODE			
.X \pm .05		\pm 1/64				
.XX \pm .01		ANGLES				
.XXX \pm .005		\pm 0° 30'				

REQ. PER UNIT	USED ON			MS4751	Ø
	MODEL	ASS'Y. NO.	DATE		
1	GPT10K-REB		9-3-65		



SCREW CAPTIVE SCREW AND NUT DETAIL. MOUNT IN ALL "A" HOLES.

BLACK NEOPRENE CHANNEL ALL AROUND EDGE AFTER FINISHING (CONTINENTAL # 528)

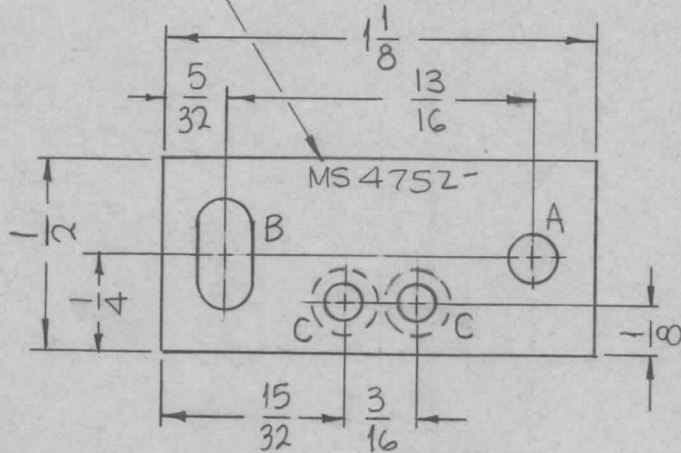
METAL STAMP TMC PART No. MS-3741, W/LATEST REV. LETTER 1/8 HIGH GOTHIC LOCATED ON REAR.

REF: MS3741

							REQ. ITEM	PART NO.	DESCRIPTION	SYMBOL		
									THE TECHNICAL MATERIEL CORP. MAMARONECK, NEW YORK			
							STOCK SIZE		MODIFICATION OF MS3741			
Ø	ORIGINAL RELEASE FOR PRODUCTION	9-14-65	H	E								
SYM	DESCRIPTION	DATE	CH. NO.	DRAFTS	CHECKER	ENG. APP.	MATERIAL					
UNLESS OTHERWISE SPECIFIED DIMENSIONS ARE IN INCHES AND INCLUDE CHEMICALLY APPLIED OR PLATED FINISHES		SCALE										
		4:1										
DECIMALS .X ± .05 .XX ± .01 .XXX ± .005		FRACTIONS ± 1/64 ANGLES ± 0° 30'		CODE								
TOLERANCES							TYPE & TEMPER		HEAT TREAT. SPEC.	DRAWN	CHECKED	FINAL APPROVAL
										D. VENEZIAN	[Signature]	[Signature]
							FINISH & SPEC. NO.		ELEC. DES. APP.	MECH. DES. APP.	9-14-65 MS4751 Ø	

METAL STAMP
TMC PART NO.
 $\frac{1}{8}$ " HIGH GOTHIC
W/LATEST REV.
LETTER.

REQ. PER UNIT	USED ON		MS4752	B
	MODEL	ASS'Y. NO.		
1 EA.	SWCA-3K		9-7-65	



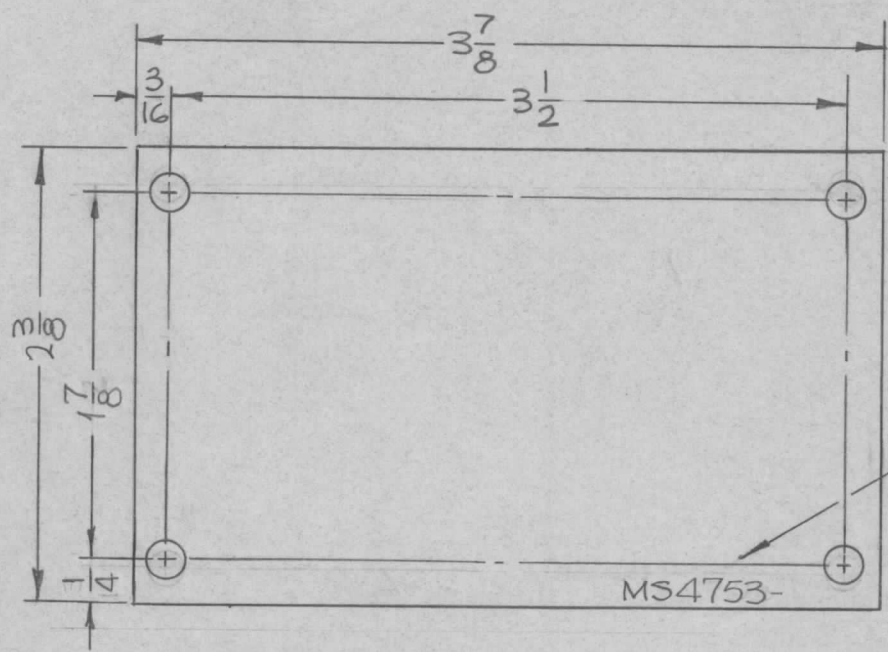
HOLES	DESCRIPTION	REQ.
A	5/32 DIA.	1
B	1/8 X 5/16 SLOT	1
C	SEE TABLE	2

TMC P/N	MAT'L THICKNESS	"C"	REF.
MS 4752-1	.064	DRILL .089 DIA. C'SINK 82° X .177 DIA.	AS SHOWN
MS 4752-2	.188	DRILL .089 DIA. C'BORE 3/16 D X 5/64 DP.	AS SHOWN
MS 4752-3	1/8	DRILL .089 DIA. C'BORE 3/16 D X 5/64 DP.	AS SHOWN
MS 4752-4	.064	DRILL .089 DIA. C'SINK 82° X .177 D	OPP. HAND
MS 4752-5	.188	DRILL .089 DIA. C'BORE 3/16 X 5/64 DP.	OPP. HAND
MS 4752-6	1/8	DRILL .089 DIA. C'BORE 3/16 D X 5/64 DP.	OPP. HAND

SYM	DESCRIPTION	DATE	CH. NO.	DRAFTS	CHECKER	ENG. APP.
B	ADD -3 TO -6 & COL. "C" & "REF" REVISED HOLE LEGEND	11-21-66	17295	RME	JCB	QDS
A	STOCK SIZE BOX WAS .064 THICK DELE. OBSOLETE STAMP, ADD TMC CHART. MODEL VVA3 TST-10K.	8-2-66	16684	RME	JCB	QDS
Ø	ORIGINAL RELEASE	10/29/65				
X ₁	OBSOLETE	10-8-65	X ₁			QA

REQ. ITEM	PART NO.	F. BUDETTI	DESCRIPTION	SYMBOL
	SEE CHART		THE TECHNICAL MATERIEL CORP. MAMARONECK, NEW YORK	
	STOCK SIZE		ALUMINUM	PLATE, MTG. SWITCH
	5052-H32			
	S404 YEL. IRIDITE			
	FINISH & SPEC. NO.			

REQ. PER UNIT	USED ON			MS4753 \emptyset
	MODEL	ASS'Y. NO.	DATE	
1	TST-10K		9-6-65	



HOLES:
11/64 DIA. 4 REQ.

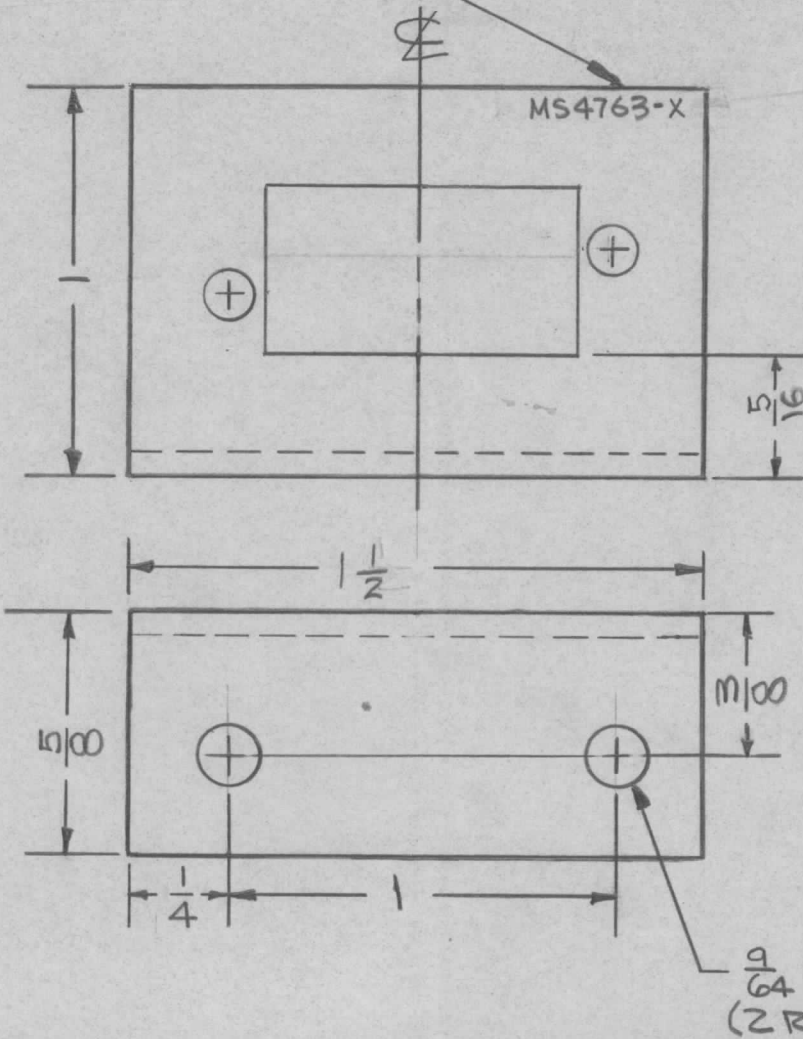
MARK TMC PART NO.
1/8" HIGH GOTHIC W/LATEST
REV. LETTER.

FINISH NOTES:
1- COPPER FLASH.
2- S-245 SILVER PLATE.
3- S-423 SILVER KOTE.

REQ.	ITEM	PART NO.	F. BUDETTI DESCRIPTION				SYMBOL
\emptyset		.051 THICK	THE TECHNICAL MATERIEL CORP.				
		STOCK SIZE	MAMARONECK, NEW YORK				
X1	1/4 WAS 3/16, 1-7/8 WAS 2	ALUMINUM	PLATE, WRAPAROUND				
SYM	DESCRIPTION	MATERIAL					
UNLESS OTHERWISE SPECIFIED DIMENSIONS ARE IN INCHES AND INCLUDE CHEMICALLY APPLIED OR PLATED FINISHES		SCALE					
		1:1					
DECIMALS .X \pm .05 .XX \pm .01 .XXX \pm .005	TOLERANCES	FRACTIONS \pm 1/64 ANGLES \pm 0° 30'	CODE				
			A				
		5052-H32	TYPE & TEMPER	HEAT TREAT. SPEC.	DRAWN	CHECKED	FINAL APPROVAL
		SEE NOTES			<i>[Signature]</i>	<i>[Signature]</i>	<i>[Signature]</i>
		FINISH & SPEC. NO.	ELEC. DES. APP.	MECH. DES. APP.	MS4753 \emptyset		

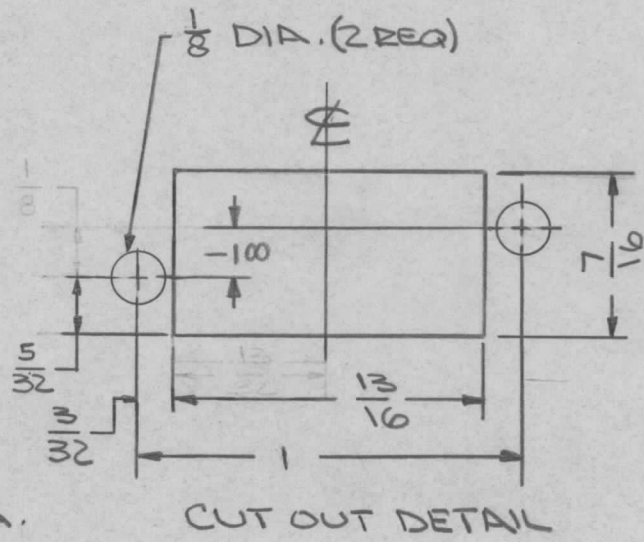
METAL STAMP, TMC PART NO. 1/8 HIGH GOTHIC.
W/LATEST REV. LETTER.

REQ. PER UNIT	USED ON		MS4763	Ø
	MODEL	ASS'Y. NO.		
	L RCD-1		9-17-65	



UNLESS OTHERWISE SPECIFIED:

1. USE MATERIAL THICKNESS FOR MAXIMUM RADIUS ON ALL BENDS
2. ALL ANGULAR BENDS 90 DEGREES
3. REMOVE ALL BURRS AND SHARP EDGES
4. MOUNT INSERTS AFTER FINISHING

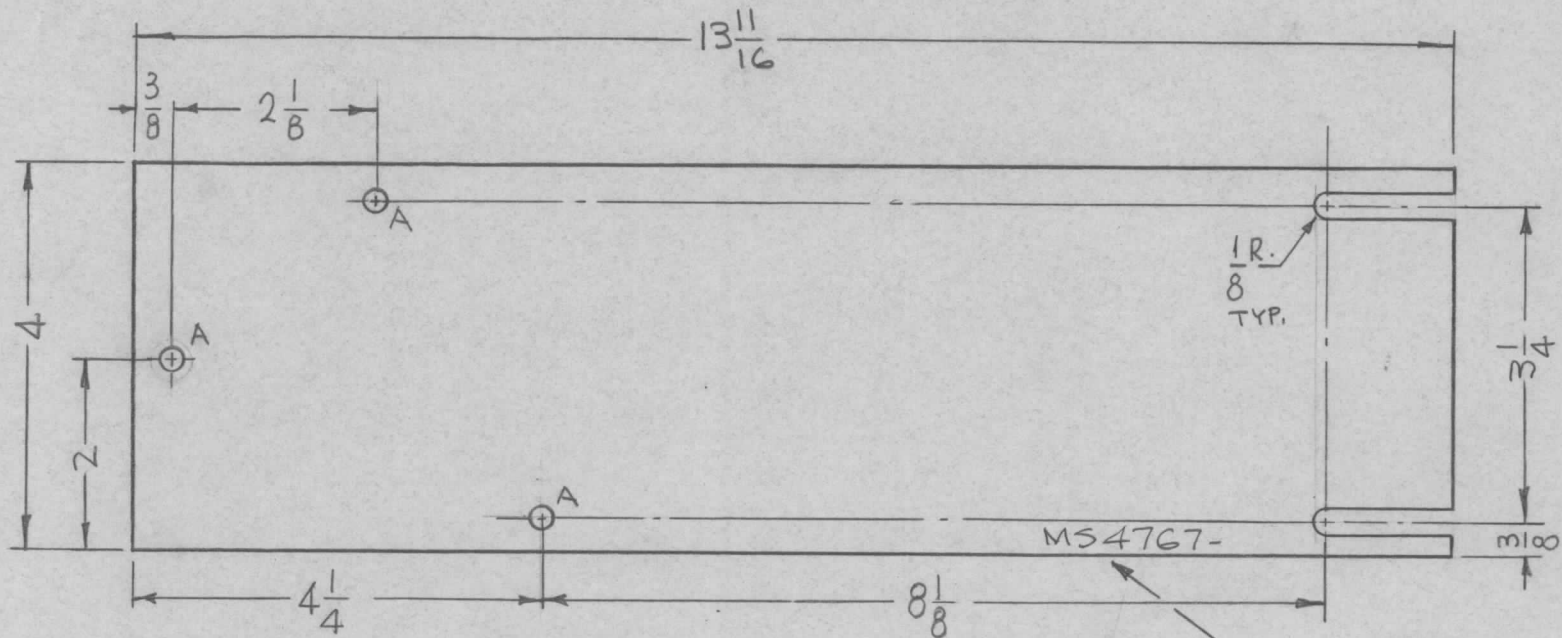


				REQ. ITEM	PART NO.	EATON	DESCRIPTION	SYMBOL
				.002		THE TECHNICAL MATERIEL CORP.		
				STOCK SIZE		MAMARONECK, NEW YORK		
				ALUMINUM		BRACKET, RELAY MTG.		
				MATERIAL				
Ø	ORIGINAL RELEASE FOR PRODUCTION	9/21/65	Ø	211				
SYM	DESCRIPTION	DATE	CH. NO.	DRAFTS	CHECKER	ENG. APP.		
UNLESS OTHERWISE SPECIFIED DIMENSIONS ARE IN INCHES AND INCLUDE CHEMICALLY APPLIED OR PLATED FINISHES				SCALE		2:1		
DECIMALS		FRACTIONS		CODE				
.X ± .05		± 1/64						
.XX ± .01		ANGLES						
.XXX ± .005		± 0° 30'						
TOLERANCES								
				5052-H32		EANZA	9/21/65	9/21/65
				TYPE & TEMPER	HEAT TREAT. SPEC.	DRAWN	CHECKED	FINAL APPROVAL
				IRIDITE	S404		W. JORDAN	MS4763 Ø
				FINISH & SPEC. NO.		ELEC. DES. APP.	MECH. DES. APP.	

HOLES:

A - A - $\frac{13}{64}$ DIA. (3REQ)

REQ. PER UNIT	USED ON			MS4767	Ø
	MODEL	ASS'Y. NO.	DATE		
2	TST-10K		9-27-65		



MARK TMC PART NO. $\frac{1}{8}$ HIGH GOTHIC W/LATEST REV. LETTER.

REQ.	ITEM	PART NO.	F. BUDETTI DESCRIPTION			SYMBOL
		.064 THICK	THE TECHNICAL MATERIEL CORP.			
		STOCK SIZE	MAMARONECK, NEW YORK			
Ø	ORIGINAL RELEASE FOR PRODUCTION	ALUMINUM	COVER, CABLE SHIELD			
SYM	DESCRIPTION	DATE	CH. NO.	DRAFTS	CHECKER	ENG. APP.
	UNLESS OTHERWISE SPECIFIED DIMENSIONS ARE IN INCHES AND INCLUDE CHEMICALLY APPLIED OR PLATED FINISHES	SCALE				
		$\frac{1}{2}:1$				
	DECIMALS .X ± .05 .XX ± .01 .XXX ± .005	FRACTIONS ± 1/64 ANGLES ± 0° 30'	CODE			
	TOLERANCES		A			
		5052-H32				
		TYPE & TEMPER	HEAT TREAT. SPEC.			
		5404 YEL. IRIDITE				
		FINISH & SPEC. NO.	ELEC. DES. APP.	MECH. DES. APP.		
						MS4767 Ø

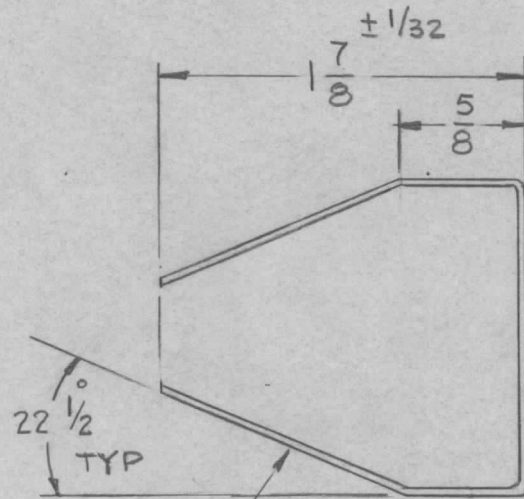
HOLE	DESCRIPTION	REQ.
A	.203 DIA.	2
B	.375 DIA.	1
C	.312 DIA.	6

REQ. PER UNIT	USED ON		
	MODEL	ASS'Y. NO.	DATE
1	C4GR-3A		10-5-65

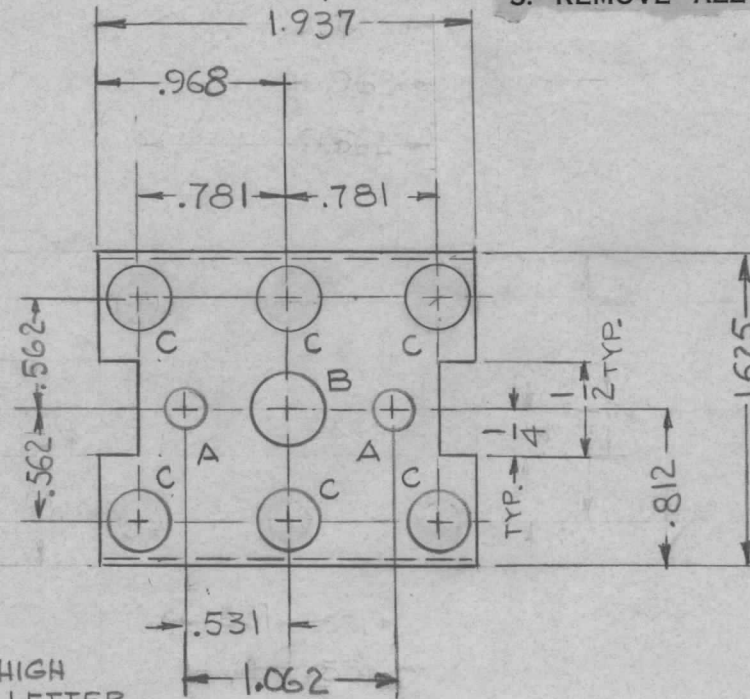
MS4769 \emptyset

UNLESS OTHERWISE SPECIFIED:

1. USE MATERIAL THICKNESS FOR MAXIMUM RADIUS ON ALL BENDS
2. ALL ANGULAR BENDS 90 DEGREES
3. REMOVE ALL BURRS AND SHARP EDGES



RUBBER STAMP TMC PT/NO. 1/8 HIGH
GOTHIC W/LATEST REV. LETTER



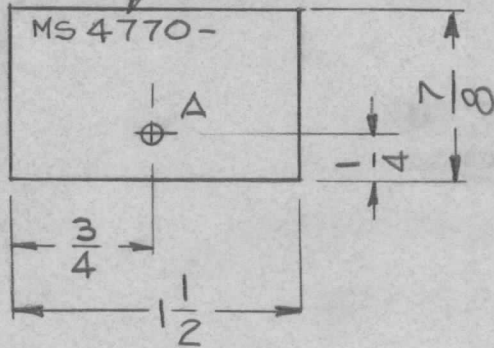
REQ.	ITEM	PART NO.	J. ANGER	DESCRIPTION	SYMBOL
		.031 THK.		THE TECHNICAL MATERIEL CORP.	
		STOCK SIZE		MAMARONECK. NEW YORK	
		ALUMINUM		SHIELD, RF	
		MATERIAL			
		5052-H32	G.D.L. 10-5-65	10/25/65	
		TYPE & TEMPER	HEAT TREAT. SPEC.	DRAWN	CHECKED
		5404 YEL. IRIDITE			
		FINISH & SPEC. NO.	ELEC. DES. APP.	MECH. DES. APP.	
					MS4769 \emptyset

NOTE -

REMOVE ALL BURRS AND SHARP EDGES

REQ. PER UNIT	USED ON			MS4770	∅
	MODEL	ASS'Y. NO.	DATE		
1	RTPD-1		9-29-65		
1	RTPE-1				
1	RTPF-1				

METAL STAMP TMC PT/NO
1/8 HIGH GOTHIC W/LATEST
REV. LETTER

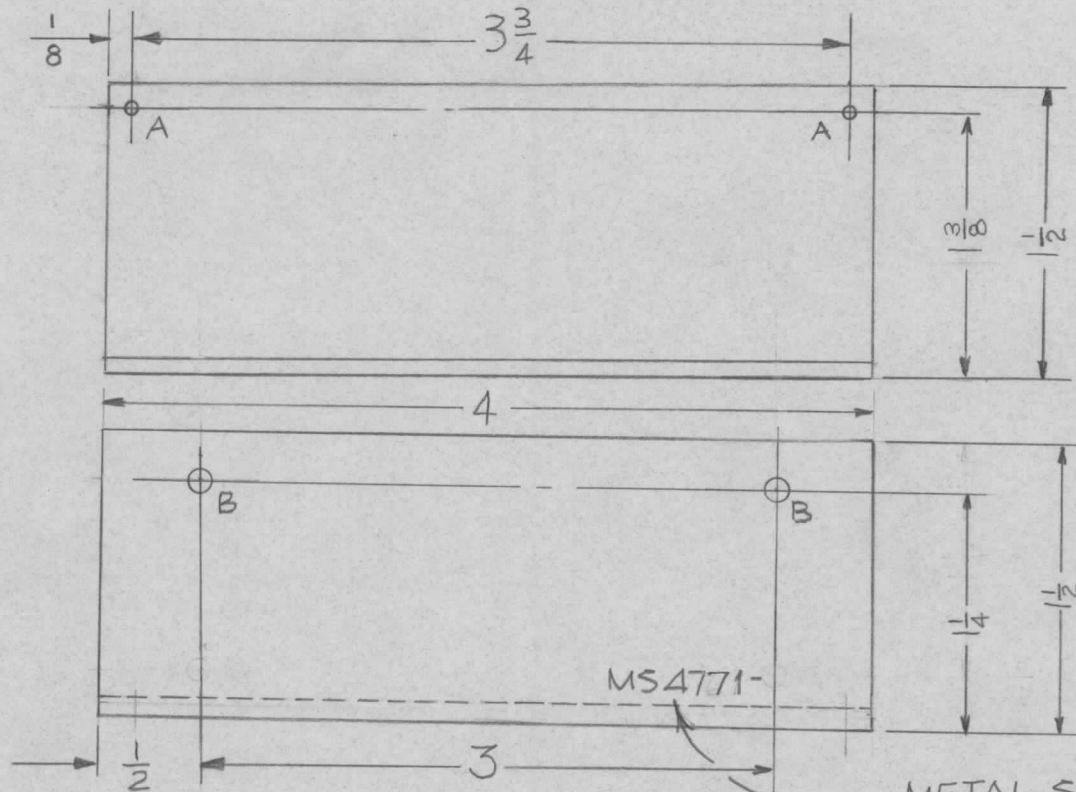


HOLE	DESCRIPTION	REQ.
A	3/32	1

SYM	DESCRIPTION	DATE	CH. NO.	DRAFTS	CHECKER	ENG. APP.	REQ. ITEM	PART NO.	EATON	DESCRIPTION	SYMBOL
∅	ORIGINAL RELEASE	10/5/65	∅				.062 THK.			THE TECHNICAL MATERIEL CORP. MAMARONECK. NEW YORK	
							STOCK SIZE				
							ALUMINUM			COVER, RELAY CUTOUT	
							MATERIAL				
							5052-H32		10-5-65 G.D.L.	JCB	10/5/65
							TYPE & TEMPER	HEAT TREAT. SPEC.	DRAWN	CHECKED	FINAL APPROVAL
							5404 YEL. IRIDITE			W. JORDAN 10/5/65	MS4770 ∅
							FINISH & SPEC. NO.		ELEC. DES. APP.	MECH. DES. APP.	

HOLE	DESCRIPTION	REQ.
A	.070 DIA (NO. 50 DRILL)	2
B	11/64 DIA	2

REQ. PER UNIT	USED ON			MS4771	XI
	MODEL	ASS'Y. NO.	DATE		
1	DDER-506	A2968	9-24-65		



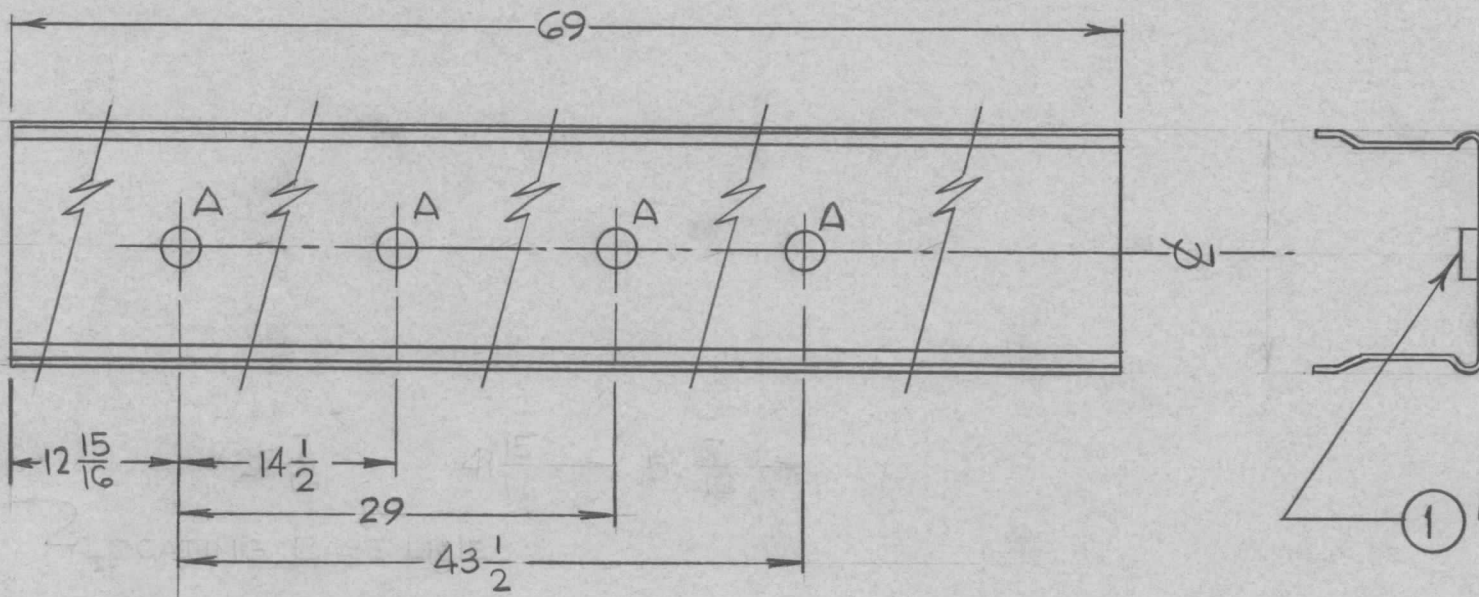
METAL STAMP
TMC PT NO. 1/8
HIGH GOTHIC W/LATEST REV. LETTER

PROTO-TYPE DRAWING
 NOT FOR PRODUCTION
 Engineering Approval Required For Release
 App. By

REQ.	ITEM	PART NO.	M. STURMER DESCRIPTION	SYMBOL							
		.064 THK STOCK SIZE	THE TECHNICAL MATERIEL CORP. MAMARONECK, NEW YORK								
XI	DWG NO. WAS MS4767 (ERROR)	10/1/65	AA	JC							
X	EXPERIMENTAL RELEASE	9/23/65									
SYM	DESCRIPTION	DATE	CH. NO.	DRAFTS	CHECKER	ENG. APP.	MATERIAL	BRACKET, NAMEPLATE MOUNTING			
UNLESS OTHERWISE SPECIFIED DIMENSIONS ARE IN INCHES AND INCLUDE CHEMICALLY APPLIED OR PLATED FINISHES		SCALE		1:1							
DECIMALS .X ± .05 .XX ± .01 .XXX ± .005	TOLERANCES	FRACTIONS ± 1/64 ANGLES ± 0° 30'	CODE				TYPE & TEMPER	HEAT TREAT. SPEC.	DRAWN	CHECKED	FINAL APPROVAL
							404	YELLOW IRIDITE			MS4771 XI
							FINISH & SPEC. NO.	ELEC. DES. APP.	MECH. DES. APP.		

A = .191-.194 DIA. - 4 REQ.

REQ. PER UNIT	USED ON			MS4773 Ø
	MODEL	ASS'Y. NO.	DATE	
1	RAK-12G		10-13-65	



REF: PO1GO

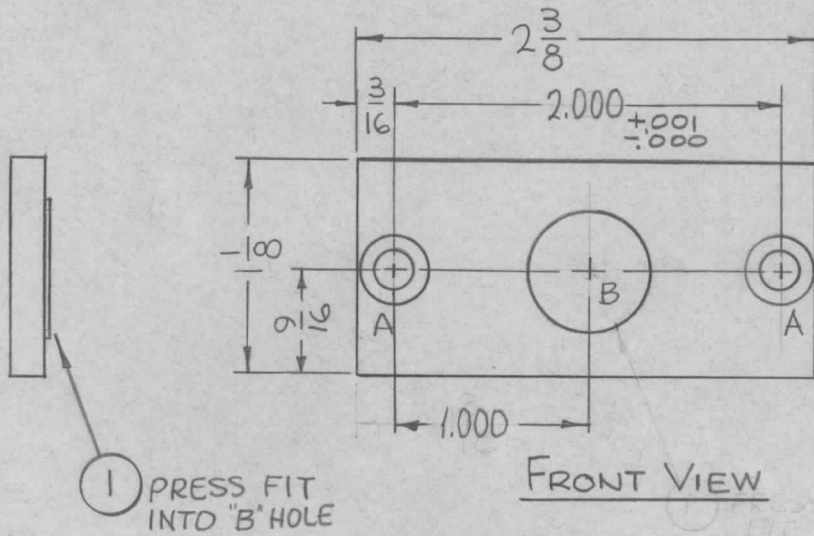
4	1	NT129-0632-4	NUT, PLAIN, SPLINE			A
REQ. ITEM	PART NO.		STURMER DESCRIPTION			SYMBOL
STOCK SIZE			THE TECHNICAL MATERIEL CORP. MAMARONECK, NEW YORK			
MATERIAL			CHANNEL, STRIP, AC			
Ø	ORIGINAL RELEASE FOR PRODUCTION	11/4/65	Ø	AVK		
SYM	DESCRIPTION	DATE	CH. NO.	DRAFTS	CHECKER	ENG. APP.
UNLESS OTHERWISE SPECIFIED DIMENSIONS ARE IN INCHES AND INCLUDE CHEMICALLY APPLIED OR PLATED FINISHES		SCALE NOT TO SCALE				
DECIMALS .X ± .05 .XX ± .01 .XXX ± .005	FRACTIONS ± 1/64 ANGLES ± 0° 30'	CODE A				
TOLERANCES		FINISH & SPEC. NO.				
		ELEC. DES. APP.		MECH. DES. APP.		MS4773 Ø
		H. AUSTIN		JCB		11/4/65
		TYPE & TEMPER		HEAT TREAT. SPEC.		11/4/65
		DRAWN		CHECKED		FINAL APPROVAL

REQ. PER UNIT	USED ON			MS4776	Ø
	MODEL	ASS'Y. NO.	DATE		
1	RFTA-1		10-12-65		

HOLES:

A ~ DR. 196 DIA. C'SINK 82° X .390 DIA.
2 REQ.

B ~ $\frac{.6240}{.6245}$ DIA.



MARK STAMP
TMC P/N (MS4776)
1/8" HIGH GOTHIC
W/LATEST REV.
LETTER.
(ON REAR)

REF: PM 1212

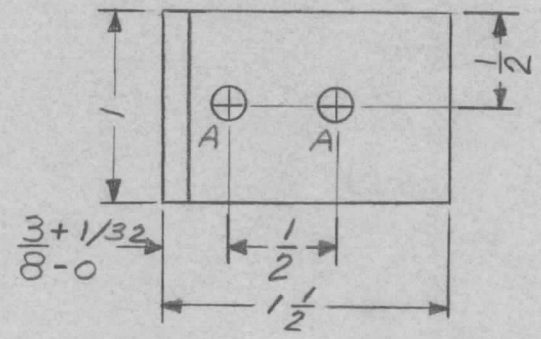
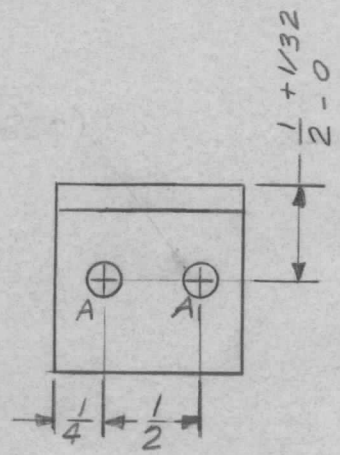
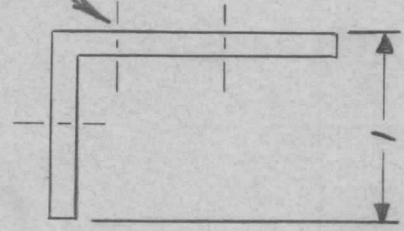
						1	1	BB126-5	BEARING, RACE	B		
						REQ. ITEM		PART NO.	F. BUDETTI DESCRIPTION	SYMBOL		
								3/16 THICK	THE TECHNICAL MATERIEL CORP. MAMARONECK, NEW YORK			
								STOCK SIZE				
Ø	ORIGINAL RELEAS FOR PRODUCTION	3-3-66	MA	Jc	QCB			ALUMINUM	PLATE, BEARING			
SYM	DESCRIPTION	DATE	CH. NO.	DRAFTS	CHECKER	ENG. APP.		MATERIAL				
UNLESS OTHERWISE SPECIFIED DIMENSIONS ARE IN INCHES AND INCLUDE CHEMICALLY APPLIED OR PLATED FINISHES		SCALE						2024-T3				
		1:1						TYPE & TEMPER	HEAT TREAT. SPEC.	DRAWN	CHECKED	FINAL APPROVAL
DECIMALS .X ± .05 .XX ± .01 .XXX ± .005	TOLERANCES	FRACTIONS ± 1/64 ANGLES ± 0° 30'	CODE A					S404 YEL. IRIDITE				
								FINISH & SPEC. NO.	ELEC. DES. APP.	MECH. DES. APP.	MS4776	Ø

HOLE	DESCRIPTION	REQ
A	13/64 DIA.	4

REQ. PER UNIT	USED ON		
	MODEL	ASS'Y. NO.	DATE
4	KIT 271		10-21-64
4	KIT 272		

MS4784 \emptyset

MARK TMC PT. NO.
1/8 HIGH GOTHIC
W/LATEST REV. LETTER.



UNLESS OTHERWISE SPECIFIED:

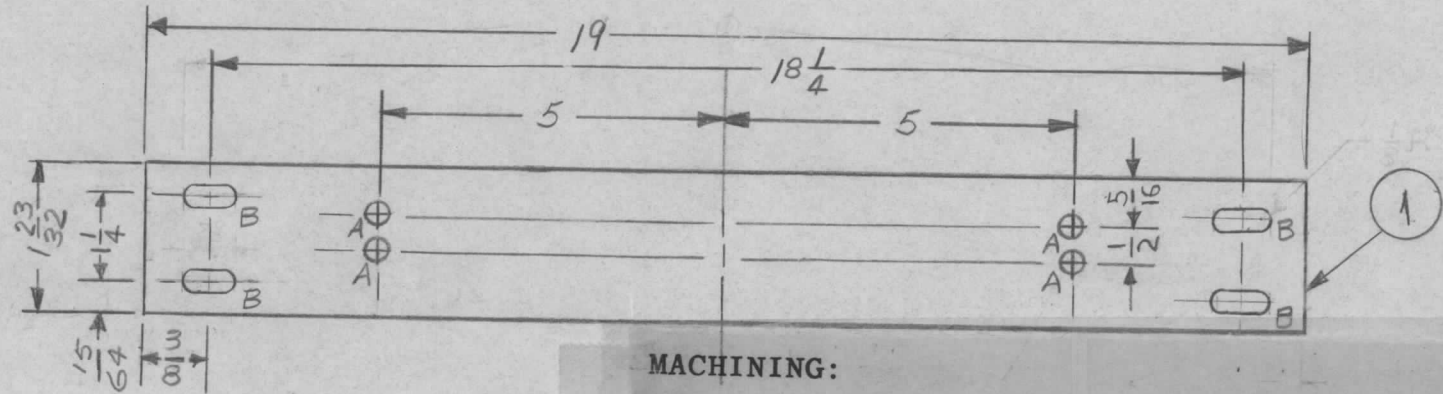
1. USE MATERIAL THICKNESS FOR MAXIMUM RADIUS ON ALL BENDS
2. ALL ANGULAR BENDS 90 DEGREES
3. REMOVE ALL BURRS AND SHARP EDGES

SYM	DESCRIPTION	DATE	CH. NO.	DRAFTS	CHECKER	ENG. APP.	REQ. ITEM	PART NO.	STURMER DESCRIPTION	SYMBOL	
							1 X 1 1/2 X 1/8 \neq		THE TECHNICAL MATERIEL CORP. MAMARONECK, NEW YORK	\emptyset	
	ORIGINAL RELEASE FOR PRODUCTION	1/4/65					STOCK SIZE				
X	DIM. BETW. HOLE WAS 3/8 (LWR VIEW) "A" HOLES WERE 3/16 D.	11/3/65			DUV		ALUMINUM	BRACKET, MTG., SUPPORT			
								MATERIAL			
	UNLESS OTHERWISE SPECIFIED DIMENSIONS ARE IN INCHES AND INCLUDE CHEMICALLY APPLIED OR PLATED FINISHES						5052 H32		D.V.V. 10-29-65	QC/S	1/11/65 11/4/65
							TYPE & TEMPER	HEAT TREAT. SPEC.	DRAWN	CHECKED	FINAL APPROVAL
	DECIMALS .X \pm .05 .XX \pm .01 .XXX \pm .005	FRACTIONS \pm 1/64 ANGLES \pm 0° 30'	TOLERANCES	CODE			YEL IRIDITE S404			11/2/65	MS4784 \emptyset
							FINISH & SPEC. NO.	ELEC. DES. APP.	MECH. DES. APP.		

HOLE	DESCRIPTION	REQ.
A	13/64 DIA.	4
B	29/64 X 1/4 SLOT	4

REQ. PER UNIT	USED ON		
	MODEL	ASS'Y. NO.	DATE
1	KIT 271		10/29/65
1	KIT 272		10/29/65

MS4787 \emptyset



MACHINING:

1. MILL ALL EDGES.
2. HOLES MUST BE DRILLED, UNLESS OTHERWISE SPECIFIED.
3. LATERAL BOW OF PANEL MUST BE KEPT TO .031 TOLERANCE.
4. PANEL MUST BE FREE OF ALL MACHINING MARKS, GOUGES AND SCRATCHES. IF NECESSARY, SAND FRONT OF PANEL WITH NO. 120 GRIT SANDPAPER.

FINISH NOTES:

1. S404 - IRIDITE 14-2 AL-COAT.
 2. S114 - ZINC CHROMATE PRIMER
 3. S115 - SMOOTH GRAY ENAMEL
- FRONT AND EDGES ONLY
OR
PRIME AND PAINT PER CUSTOMER'S SPECIFICATIONS.

REQ. ITEM	PART NO.	STURMER DESCRIPTION	SYMBOL
	3/16	THE TECHNICAL MATERIEL CORP. MAMARONECK, NEW YORK	
	ALUMINUM	PANEL, FRONT	
	2024-T3	DUVENEZIAN 10-29-65	
	SEE NOTES	11/4/65	
		MS4787 \emptyset	

SYM	DESCRIPTION	DATE	CH. NO.	DRAFTS	CHECKER	ENG. APP.
\emptyset	ORIGINAL RELEASE FOR PRODUCTION	11/4/65			J.V.V.	
XI	ITEM 1 MS157-1H DELETED, A HOLES WERE 3/16	11/4/65			JC	

DECIMALS	FRACTIONS	CODE
.X \pm .05	\pm 1/64	
.XX \pm .01	ANGLES \pm 0° 30'	
.XXX \pm .005		

UNLESS OTHERWISE SPECIFIED DIMENSIONS ARE IN INCHES AND INCLUDE CHEMICALLY APPLIED OR PLATED FINISHES

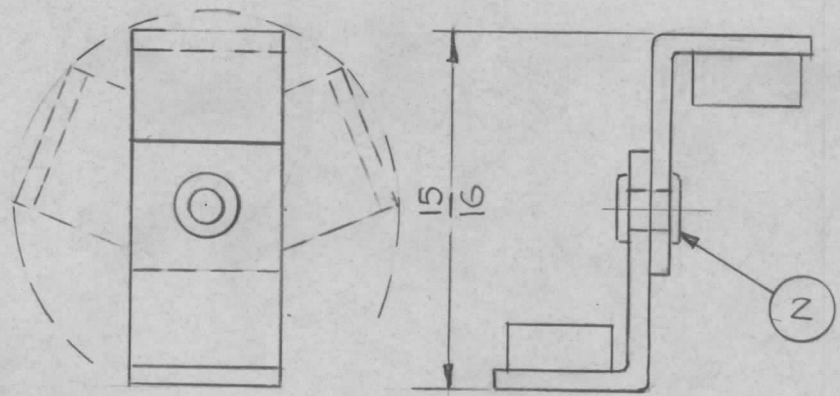
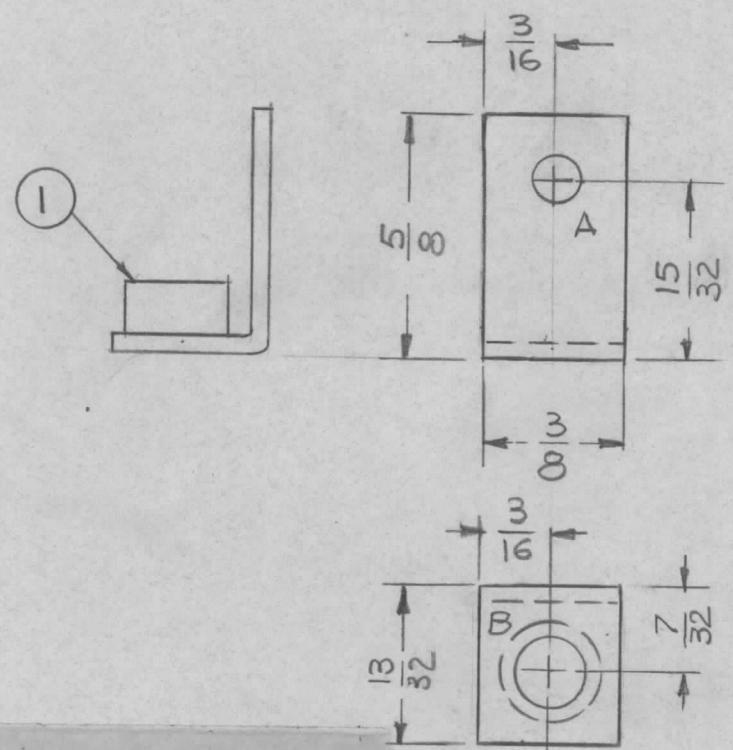
SCALE: DO NOT SCALE

HOLE	DESCRIPTION	REQ.
A	1/8 DIA	1
B	.191 - .194 DIA	1

REQ. PER UNIT	USED ON		
	MODEL	ASS'Y. NO.	DATE
4	TPSG-1	AX 5297	11-9-65

MS 4793 \emptyset

NOTE: HINGE ACTION MUST BE LOOSE



- ASS'Y DETAIL -

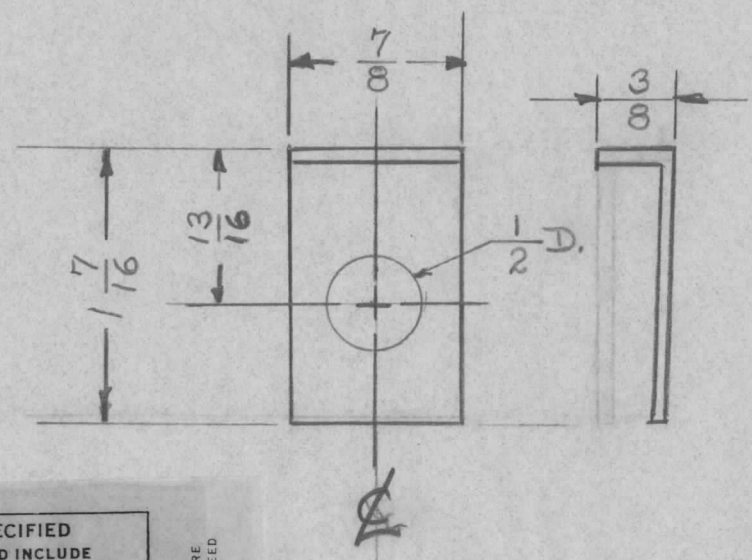
UNLESS OTHERWISE SPECIFIED:

1. USE MATERIAL THICKNESS FOR MAXIMUM RADIUS ON ALL BENDS
2. ALL ANGULAR BENDS 90 DEGREES
3. REMOVE ALL BURRS AND SHARP EDGES
4. MOUNT INSERTS AFTER FINISHING

1	2	EY 100-1	EYELET	A	
2	1	NT 129-632-3	NUT, PLAIN, SPLINE	B	
REQ. ITEM	PART NO.		POSE	DESCRIPTION	SYMBOL
.051 THK.			THE TECHNICAL MATERIEL CORP.		
STOCK SIZE			MAMARONECK, NEW YORK		
ALUMINUM			BRACKET, HINGE		
MATERIAL					
5052-H32		G.D.L. 11-5-65		J.C. [Signature]	
TYPE & TEMPER		HEAT TREAT. SPEC.		DRAWN	
3404 YEL. IRIDITE				CHECKED	
FINISH & SPEC. NO.		ELEC. DES. APP.		MECH. DES. APP.	
				MS 4793 \emptyset	

SYM	DESCRIPTION	DATE	CH. NO.	DRAFTS	CHECKER	ENG. APP.
\emptyset	ORIGINAL RELEASE	11/9/65	\emptyset	X.V.V.		
UNLESS OTHERWISE SPECIFIED DIMENSIONS ARE IN INCHES AND INCLUDE CHEMICALLY APPLIED OR PLATED FINISHES		SCALE 2:1				
DECIMALS .X \pm .05 .XX \pm .01 .XXX \pm .005		FRACTIONS \pm 1/64 ANGLES \pm 0° 30'		CODE A		
TOLERANCES						

REQ. PER UNIT	USED ON			MS4796 Ø
	MODEL	ASS'Y. NO.	DATE	
1	PSP 350B		10-27-65	



UNLESS OTHERWISE SPECIFIED
DIMENSIONS ARE IN INCHES AND INCLUDE
CHEMICALLY APPLIED OR PLATED FINISHES

DECIMALS	TOLERANCES	FRACTIONS
.X ± .05		± 1/64
.XX ± .01		ANGLES
.XXX ± .005		± 0° 30'

CUT HERE
GUARANTEED
2-66

REQ.	ITEM	PART NO.	DESCRIPTION	SYMBOL					
		.064	THE TECHNICAL MATERIEL CORP. MAMARONECK, NEW YORK	Ø					
		STOCK SIZE							
		ALUMINUM	BRACKET, COVER SUPPORT	Ø					
		MATERIAL							
ISSUE	ITEM	CHANGED FROM	DATE	CH. NO.	DRAFTS	CHECKER	ENG. APP.		
		ORIGINAL RELEASE	10/27/65			File			
TOLERANCES			SCALE:		5052-H32				
DEC. DIM. ±			MAXIMUM ALLOWABLE TOLERANCES HAVE BEEN DETERMINED AND ANY DEVIATIONS WILL BE CAUSE FOR REJECTION.		TYPE & TEMPER	HEAT TREAT. SPEC.	DRAWN	CHECKED	FINAL APPROVAL
FRAC. DIM. ±			REMOVE ALL BURRS AND SHARP EDGES		S404 YEL IRIDITE				
ANGULAR DIM. ±					FINISH & SPEC. NO.		ELEC. DES. APP.	MECH. DES. APP.	MS-4796 Ø