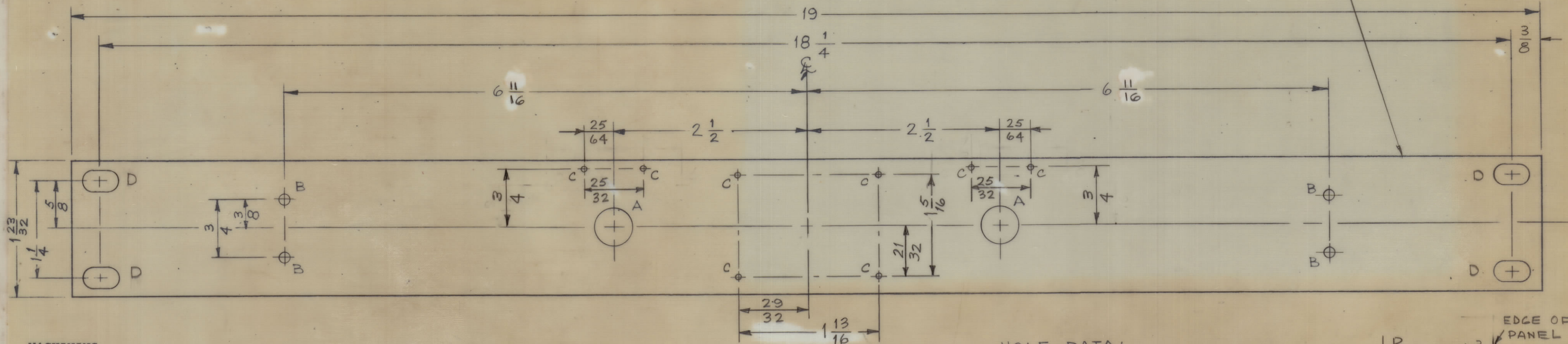


REVISIONS						
ZONE	SYM	DESCRIPTION	DATE	E.M.N. NO.	DRAFT	APPD
Ø		ORIGINAL RELEASE FOR PROD.	12/26/65			<i>[Signature]</i>

FRONT VIEW
TOP



METAL STAMP TMC PART NO. 1/8 HIGH GOTHIC W/LATEST REV. LETTER ON REAR

MACHINING:

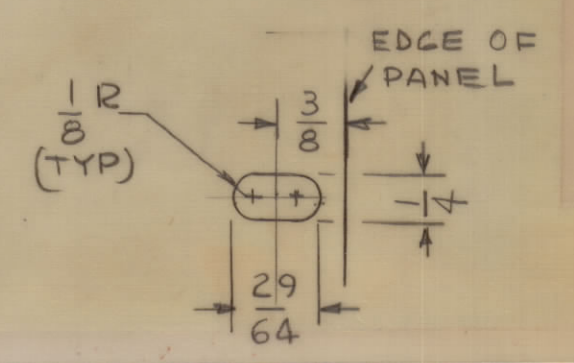
- MILL ALL EDGES.
- HOLES MUST BE DRILLED, UNLESS OTHERWISE SPECIFIED.
- LATERAL BOW OF PANEL MUST BE KEPT TO .031 TOLERANCE.
- PANEL MUST BE FREE OF ALL MACHINING MARKS, GOUGES AND SCRATCHES. IF NECESSARY, SAND FRONT OF PANEL WITH NO. 120 GRIT SANDPAPER.

FINISH NOTES:

- S404 - IRIDITE 14-2 AL-COAT.
- S114 - ZINC CHROMATE PRIMER FRONT AND
- S115 - SMOOTH GRAY ENAMEL EDGES ONLY

HOLE DATA:

- A - 15/32 DIA. 2 REQ
- B - 9/64 DIA. 4 REQ
- C - .076 DIA. 8 REQ
- D - SEE DETAIL 4 REQ



MS 4778

REF : LD 2007

REQ'D.	ITEM	PART NUMBER	DESCRIPTION	SYMBOL
LIST OF MATERIAL XLD/MS-106 (SHEET 2)				
MATERIAL		3/16 THK. ALUMINUM 52024-T3	THE TECHNICAL MATERIEL CORP. MAMARONECK, NEW YORK	
FINISH		SEE NOTES	TITLE PANEL, FRONT	
SCALE		1:1	DRAWN M. TANTILLO	
Q'TY./UNIT		1	DATE 12-26-65	
MODEL USED ON		RTO-1	FINAL APPROVAL <i>[Signature]</i>	
CODE		A	DATE 12-26-65	
ASS'Y. NO.			DATE 12-26-65	
UNLESS OTHERWISE SPECIFIED DIMENSIONS ARE IN INCHES AND INCLUDE CHEMICALLY APPLIED OR PLATED FINISHES		ELECT. DES. G. Diaballo		DATE 12-26-65
DECIMALS .X ± .05 .XX ± .01 .XXX ± .005		TOLERANCES		DATE 12-26-65
FRACTIONS ± 1/64 ANGLES ± 0° 30'		MECH. DES.		DATE 12-26-65
THE CONTENTS OF THIS DRAWING ARE THE EXCLUSIVE PROPERTY OF THE TECHNICAL MATERIEL CORP. ITS UNAUTHORIZED USE OR REPRODUCTION IN WHOLE OR IN PART IS STRICTLY FORBIDDEN.		SHEET		REV. LTR.
		MS4778		

NOTES