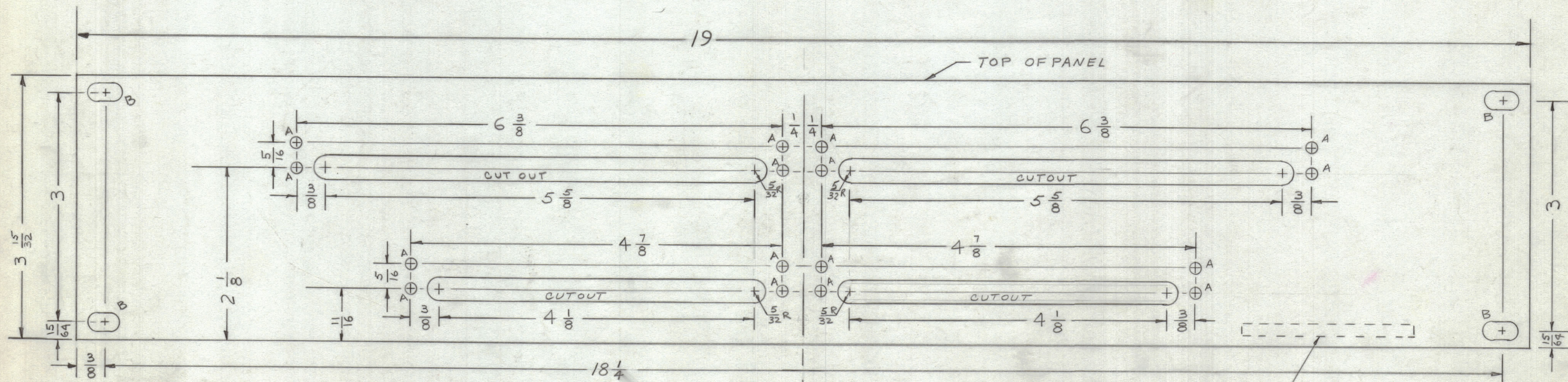


REVISIONS						
ZONE	SYM	DESCRIPTION	DATE	E.M.N. NO.	DRAFT	CHKD
	Ø	ORIGINAL RELEASE FOR PRODUCTION	9/16/65	-A	JC	



**MACHINING:**

1. MILL ALL EDGES.
2. HOLES MUST BE DRILLED, UNLESS OTHERWISE SPECIFIED.
3. LATERAL BOW OF PANEL MUST BE KEPT TO .031 TOLERANCE.
4. PANEL MUST BE FREE OF ALL MACHINING MARKS, GOUGES AND SCRATCHES. IF NECESSARY, SAND FRONT OF PANEL WITH NO. 120 GRIT SANDPAPER.

**FINISH NOTES:**

1. S404 - IRIDITE 14-2 AL-COAT.
2. S114 - ZINC CHROMATE PRIMER ) FRONT AND
3. S115 - SMOOTH GRAY ENAMEL ) EDGES ONLY

METAL STAMP TMC PART NO.  
MS-4762- 1/8 HIGH GOTHIC  
ON REAR OF PANEL, W/LATEST  
REVISION LETTER.

MS4762 Ø

HOLE LEGEND		
HOLE	DESCRIPTION	REQ'D
A	9/64 DIA.	16
B	1/4 X 7/16 SLOT	4

REF: LD2002

REQ'D.	ITEM	PART NUMBER	DESCRIPTION	SYMBOL
<b>STURMER LIST OF MATERIAL</b>				
MATERIAL 3/16 THK 2024-T3 ALUMINUM			<b>THE TECHNICAL MATERIEL CORP.</b> MAMARONECK, NEW YORK	
FINISH SEE NOTES			TITLE <b>PANEL, FRONT</b>	
UNLESS OTHERWISE SPECIFIED DIMENSIONS ARE IN INCHES AND INCLUDE CHEMICALLY APPLIED OR PLATED FINISHES			DRAWN M. STURMER	DATE 9-15-65
			CHECKED [Signature]	DATE 9/16/65
			ELECT. DES. [Signature]	DATE 9-16-65
			MECH. DES. [Signature]	DATE 9-16-65
			FINAL APPROVAL [Signature] DATE 9/16/65	
			MS4762 Ø	
			SHEET	
			REV. LTR.	

1	DDR-6M	
Q'TY./UNIT	MODEL USED ON	ASS'Y. NO.
SCALE 1/1	CODE	
THE CONTENTS OF THIS DRAWING ARE THE EXCLUSIVE PROPERTY OF THE TECHNICAL MATERIEL CORP. ITS UNAUTHORIZED USE OR REPRODUCTION IN WHOLE OR IN PART IS STRICTLY FORBIDDEN.		

NOTES