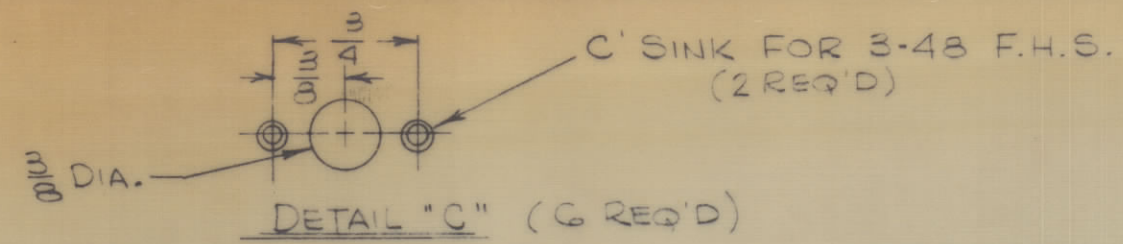


HOLE	DESCRIPTION	REQ'D
A	SEE SECTION "A-A"	3
B	.250 - .253 DIA.	6
C	SEE DETAIL	6
D	.166 DIA.	2

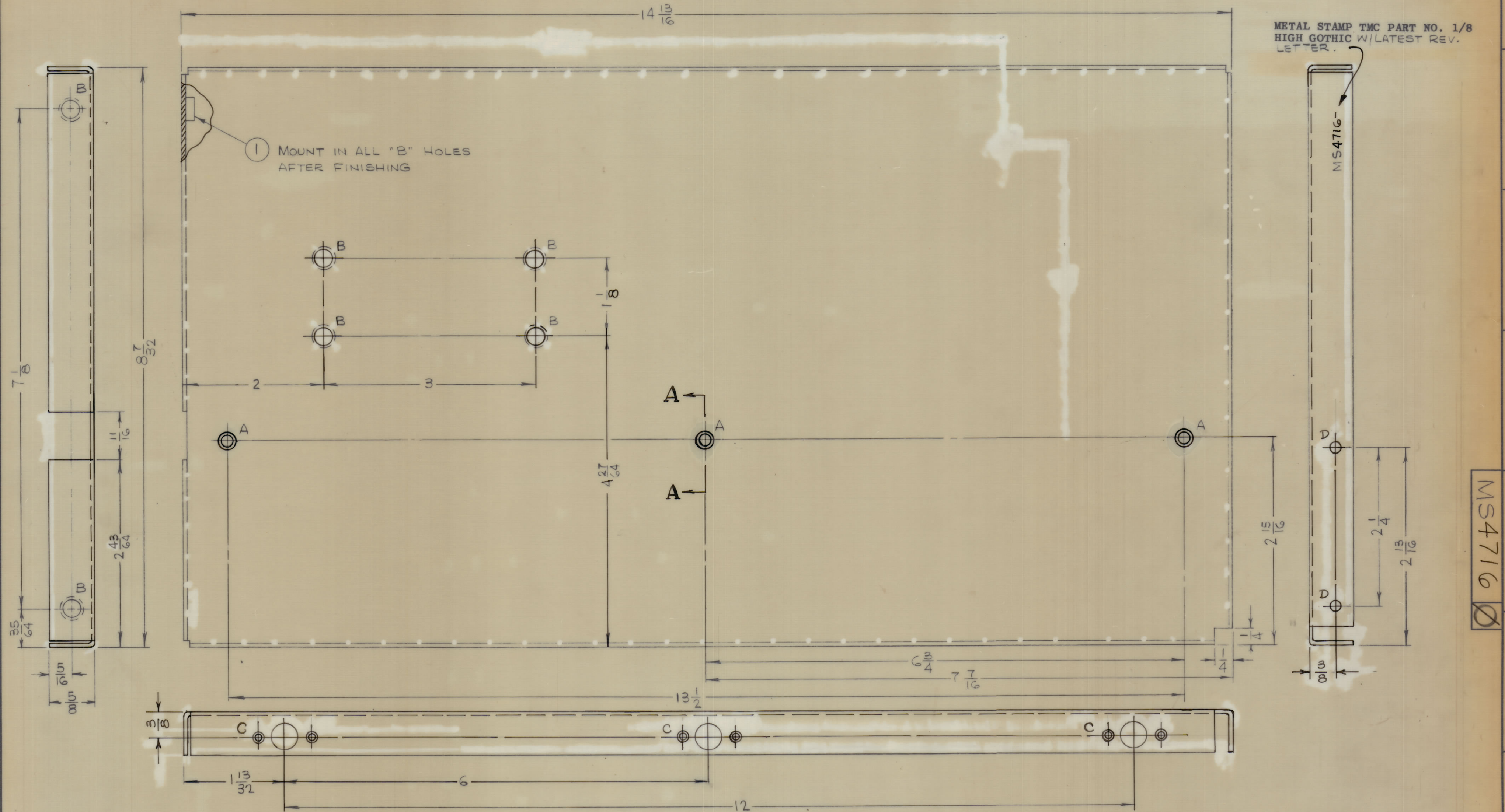


.166 DIA. C'SINK
82° TO .280 DIA.

SECTION A-A

ZONE		SYM	DESCRIPTION	DATE	E.M.N. NO.	DRAFT	CHKD	APPD
		Ø	ORIGINAL RELEASE FOR PRODUCTION	8/19/65	Ø	DKV		

METAL STAMP TMC PART NO. 1/8
HIGH GOTHIC W/LATEST REV.
LETTER.



- UNLESS OTHERWISE SPECIFIED:
1. USE MATERIAL THICKNESS FOR MAXIMUM RADIUS ON ALL BENDS
 2. ALL ANGULAR BENDS 90 DEGREES
 3. REMOVE ALL BURRS AND SHARP EDGES
 4. MOUNT INSERTS AFTER FINISHING

1	VLRE-1	ASS'Y. NO.
Q'TY./UNIT	MODEL USED ON	
SCALE	CODE	
1:1	A	

THE CONTENTS OF THIS DRAWING ARE THE EXCLUSIVE PROPERTY OF THE TECHNICAL MATERIEL CORP. ITS UNAUTHORIZED USE OR REPRODUCTION IN WHOLE OR IN PART IS STRICTLY FORBIDDEN.

6	1	NT129-1032-4	NUT, ROUND, SWAGE TYPE	B
REQ'D.	ITEM	PART NUMBER	DESCRIPTION	SYMBOL
M. ZETENA LIST OF MATERIAL				
MATERIAL			THE TECHNICAL MATERIEL CORP.	
.062 ALUMINUM			MAMARONECK, NEW YORK	
5052-H32			TITLE	
S404-YEL. IRIDITE			PLATE, SIDE, RIGHT	
FINISH			DRAWN	DATE
UNLESS OTHERWISE SPECIFIED			H. AUSTIN	7-30-65
DIMENSIONS ARE IN INCHES AND INCLUDE			CHECKED	DATE
CHEMICALLY APPLIED OR PLATED FINISHES			JCK	8/17/65
DECIMALS			ELECT. DES.	DATE
.X ± .05				
.XX ± .01			MECH. DES.	DATE
.XXX ± .005			W.C.	8/19/65
TOLERANCES			MS4716	
± 1/64			SHEET	
ANGLES			REV. LTR.	
± 0° 30'			Ø	

NOTES

MS4716