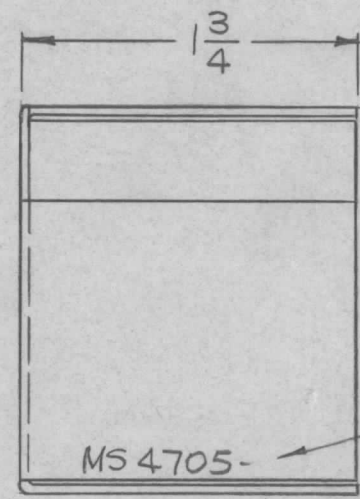
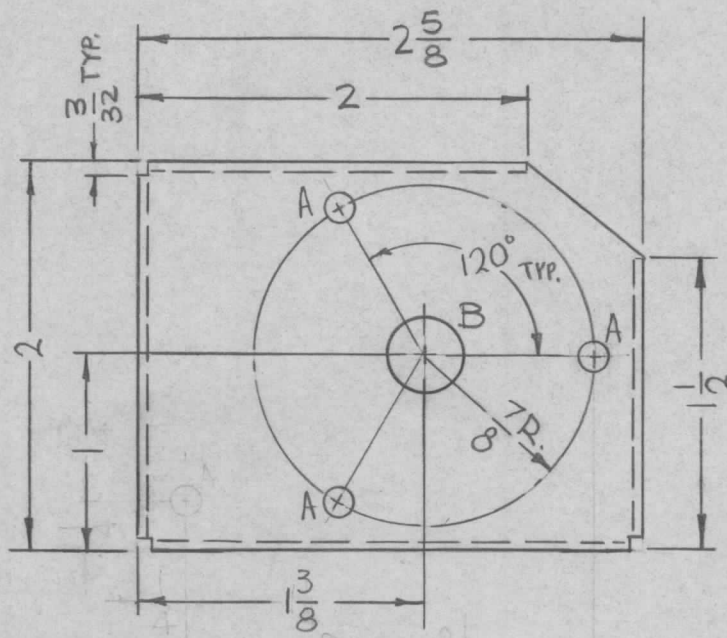


REQ. PER UNIT	USED ON			MS4705	Ø
	MODEL	ASS'Y. NO.	DATE		
1	TST-10K	AF105	7-26-65		



HOLES:
 A ~ 9/64 D. (3 REQ.)
 B ~ 3/8 D. (1 REQ.)

MARK TMC PART NO
 1/8 HIGH GOTHIC
 W/LATEST REV.
 LETTER.

- UNLESS OTHERWISE SPECIFIED:
1. USE MATERIAL THICKNESS FOR MAXIMUM RADIUS ON ALL BENDS
 2. ALL ANGULAR BENDS 90 DEGREES
 3. REMOVE ALL BURRS AND SHARP EDGES

REQ.	ITEM	PART NO.	F. BUDETTI	DESCRIPTION	SYMBOL	
		.064 THICK		THE TECHNICAL MATERIEL CORP.		
		STOCK SIZE		MAMARONECK. NEW YORK		
Ø	ORIGINAL RELEASE FOR PRODUCTION	3-23-66	Jc	COVER, CODED WAFER		
X1	1A, 7/8R. ADDED	2-14-66	X1			
SYM	DESCRIPTION	DATE	CH. NO.	DRAFTS	CHECKER	ENG. APP.
UNLESS OTHERWISE SPECIFIED DIMENSIONS ARE IN INCHES AND INCLUDE CHEMICALLY APPLIED OR PLATED FINISHES		SCALE				
		1:1				
DECIMALS .X ± .05 .XX ± .01 .XXX ± .005		TOLERANCES		FRACTIONS ± 1/64 ANGLES ± 0° 30'		CODE A
5052-H32		5404 YEL. IRIDITE		DRAWN		CHECKED
TYPE & TEMPER		HEAT TREAT. SPEC.		DRAWN		CHECKED
FINISH & SPEC. NO.		ELEC. DES. APP.		MECH. DES. APP.		MS4705 Ø