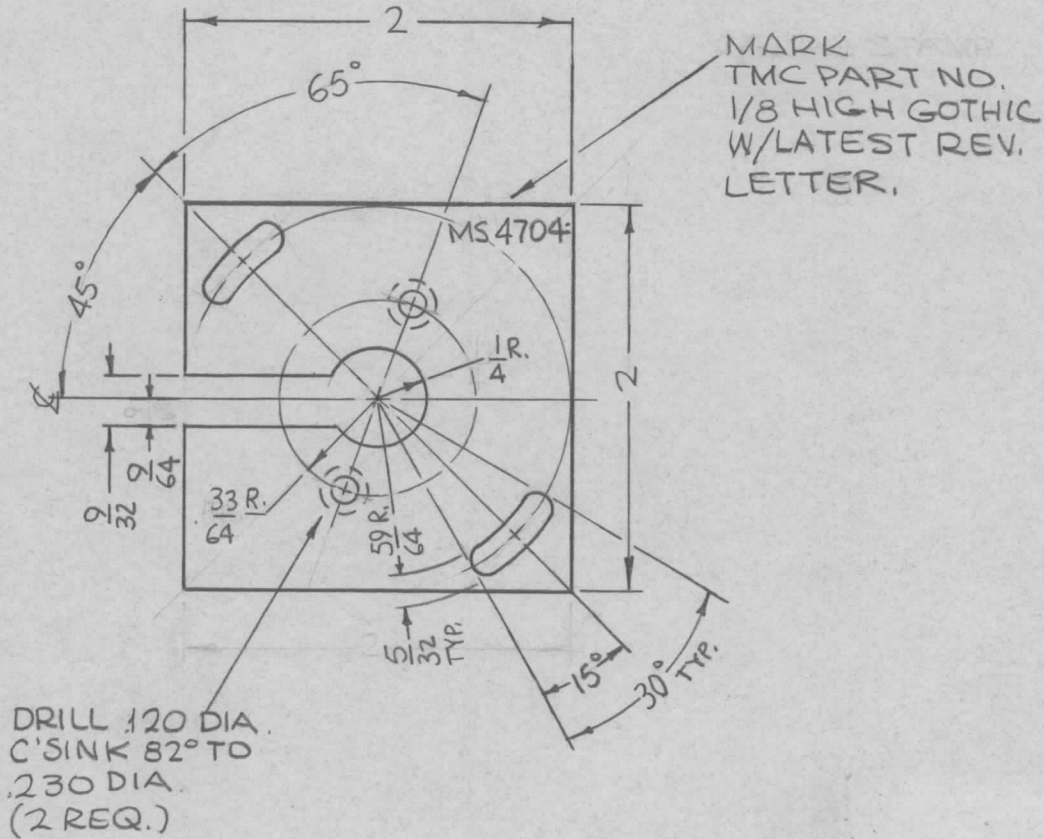


REQ. PER UNIT	USED ON			MS4704 \emptyset
	MODEL	ASS'Y. NO.	DATE	
1	RFTA-1		7-26-65	



REQ.	ITEM	PART NO.	F. BUDETTI DESCRIPTION			SYMBOL
		.081 THICK	THE TECHNICAL MATERIEL CORP.			
		STOCK SIZE	MAMARONECK, NEW YORK			
\emptyset	ORIGINAL RELEASE	3/15/66	ALUMINUM			PLATE, SWITCH
SYM	DESCRIPTION	DATE	CH. NO.	DRAFTS	CHECKER	ENG. APP.
UNLESS OTHERWISE SPECIFIED DIMENSIONS ARE IN INCHES AND INCLUDE CHEMICALLY APPLIED OR PLATED FINISHES		SCALE	1:1			
DECIMALS .X \pm .05 .XX \pm .01 .XXX \pm .005	TOLERANCES	FRACTIONS \pm 1/64 ANGLES \pm 0° 30'	CODE A			
		5052-H32				
		TYPE & TEMPER	HEAT TREAT. SPEC.	DRAWN	CHECKED	FINAL APPROVAL
		S404 YEL. IRIDITE				
		FINISH & SPEC. NO.	ELEC. DES. APP.	MECH. DES. APP.	MS4704 \emptyset	