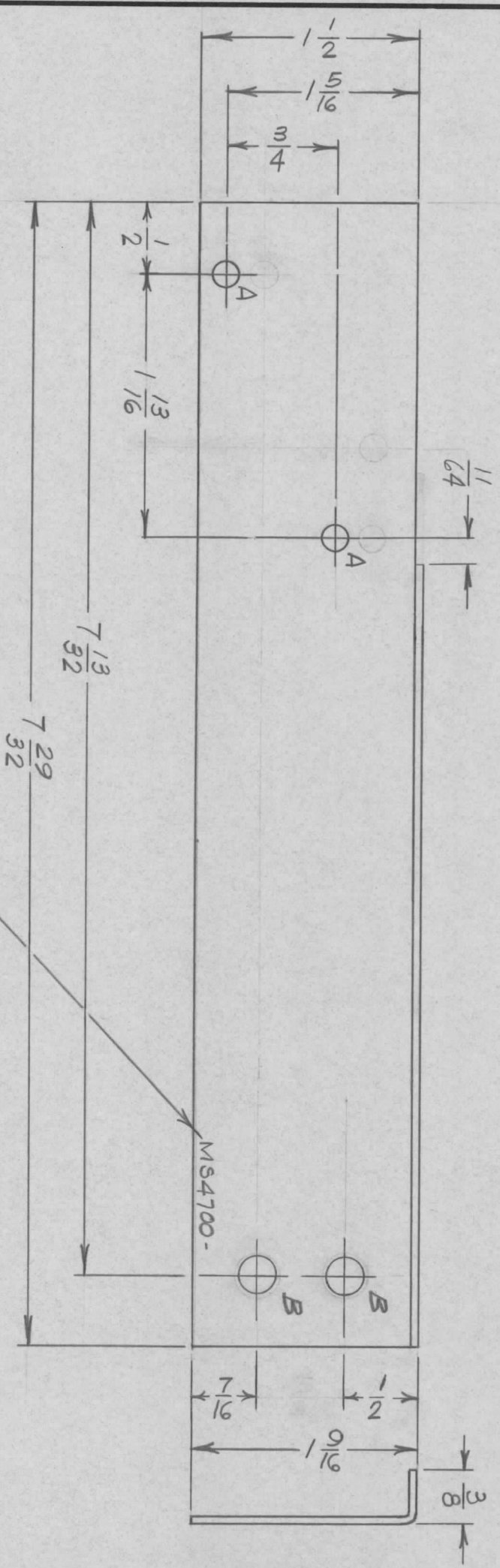


MS4700-1, AS SHOWN (LEFT SIDE)
 MS4700-2, OPPOSITE HAND (RIGHT SIDE)



METAL STAMP TMC PART NO. 1/8
 HIGH GOTHIC W/LATEST REV.
 LETTER.

- UNLESS OTHERWISE SPECIFIED:
1. USE MATERIAL THICKNESS FOR MAXIMUM RADIUS ON ALL BENDS
 2. ALL ANGULAR BENDS 90 DEGREES
 3. REMOVE ALL BURRS AND SHARP EDGES

MS4700		REVISIONS				
SYM	DESCRIPTION	DATE	E.M.N. NO.	DRAFT	CHKD	APPD
X1	8" HOLES 15/64 DIA ADDED	6/16/65	#	JC		
Ø	ORIGINAL RELEASE FOR PRODUCTION	10-5-65	#	Z		

HOLE	DESCRIPTION	REQ.
A	3/16 DIA.	2
B	15/64 DIA.	2

QTY./UNIT	MODEL USED ON	ASS'Y. NO.
SCALE	STR-1	
1:1		

THE CONTENTS OF THIS DRAWING ARE THE EXCLUSIVE PROPERTY OF THE TECHNICAL MATERIAL CORP. ITS UNAUTHORIZED USE OR REPRODUCTION IN WHOLE OR IN PART IS STRICTLY FORBIDDEN.

REQ'D.	ITEM	PART NUMBER	DESCRIPTION	SYMBOL
	POSE		LIST OF MATERIAL	
	MATERIAL	.064 THK. ALUMINUM 5052-H32	THE TECHNICAL MATERIAL CORP. MAMARONECK, NEW YORK	
	FINISH	S404 YEL. 1E1DITE	EXTENSION, SIDE PLATE MOUNTING BRACKET	

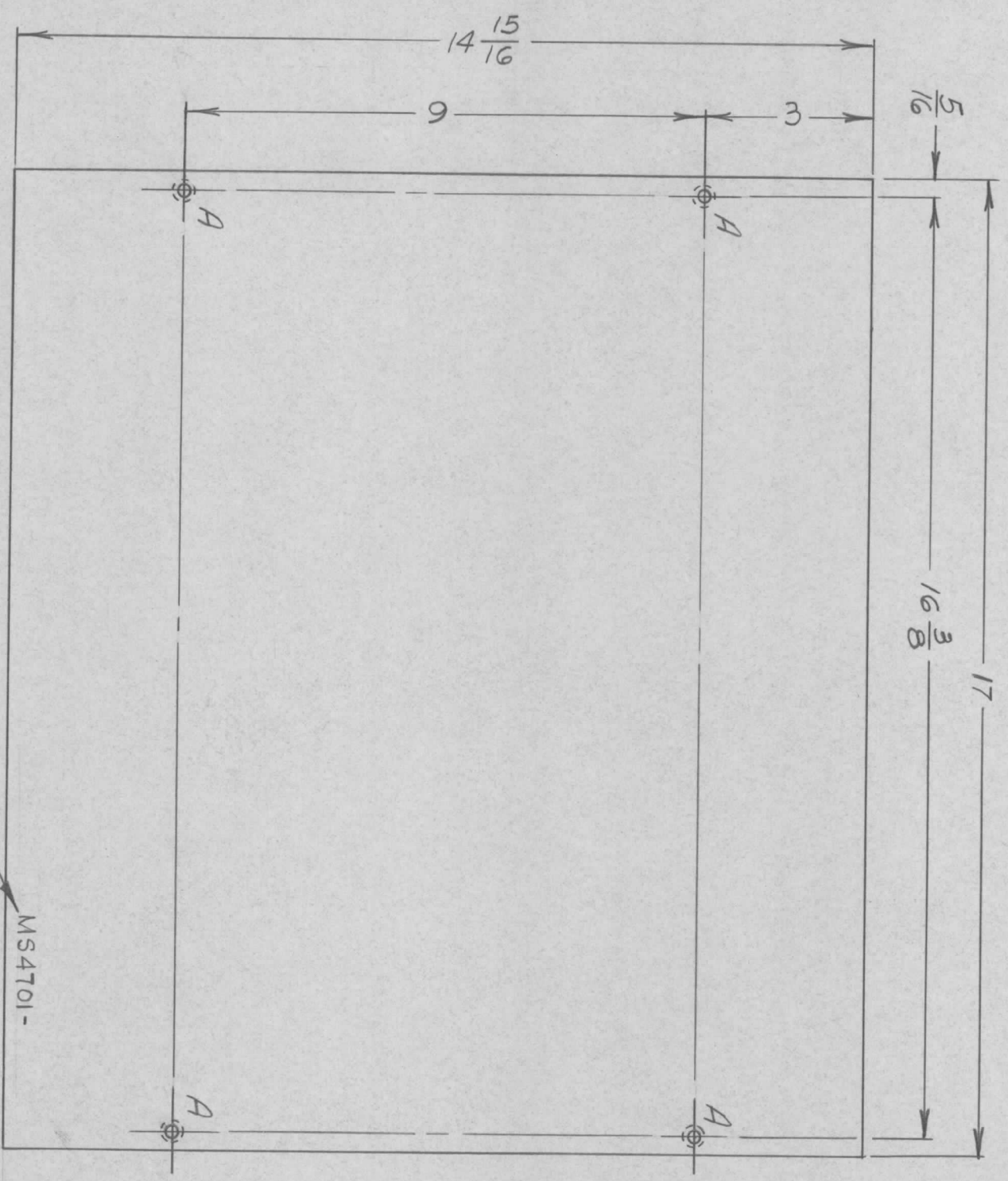
UNLESS OTHERWISE SPECIFIED DIMENSIONS ARE IN INCHES AND INCLUDE CHEMICALLY APPLIED OR PLATED FINISHES

DECIMALS: .X ± .05, .XX ± .01, .XXX ± .005
 FRACTIONS: ± 1/64, ANGLES: ± 0° 30'

DRAWN	DATE	FINAL APPROVAL	DATE
H. AUSTIN	7-27-65	[Signature]	10/5/65
CHECKED	DATE		
[Signature]	9/17/65		
ELECT. DES.	DATE		
[Signature]	9-16-65		
MECH. DES.	DATE		
[Signature]			

MS4700

HOLE	DESCRIPTION	REQ.
A	8-32 DRILL - CSK 82°	4



MS4701 \emptyset

REVISIONS		DATE	E.M.N. NO.	DRAFT	CHKD	APPD
\emptyset	ORIGINAL RELEASE FOR PRODUCTION	10-5-65		\emptyset	\emptyset	

METAL STAMP TMC PART NO. 1/8
HIGH GOTHIC W/LATEST REV.
LETTER.

MS4701-

NOTES

QTY./UNIT	MODEL USED ON	ASSY. NO.
3/8 = 1	STR-1	
SCALE		
THE CONTENTS OF THIS DRAWING ARE THE EXCLUSIVE PROPERTY OF THE TECHNICAL MATERIEL CORP. ITS UNAUTHORIZED USE OR REPRODUCTION IN WHOLE OR IN PART IS STRICTLY FORBIDDEN.		

REQ'D.	ITEM	PART NUMBER	DESCRIPTION	SYMBOL
	POSE		THE TECHNICAL MATERIEL CORP. MAMARONECK, NEW YORK	
	MATERIAL		5051 THK. ALUMINUM	
	FINISH		5404 YEL. IRIDITE	

LIST OF MATERIAL		DATE	DATE	DATE	DATE
DRAWN	H. AUSTIN	7-27-65			
CHECKED	QTS	9/19/65			
ELECT. DES.					
MECH. DES.					

DATE	FINAL APPROVAL	DATE
10/5/65		

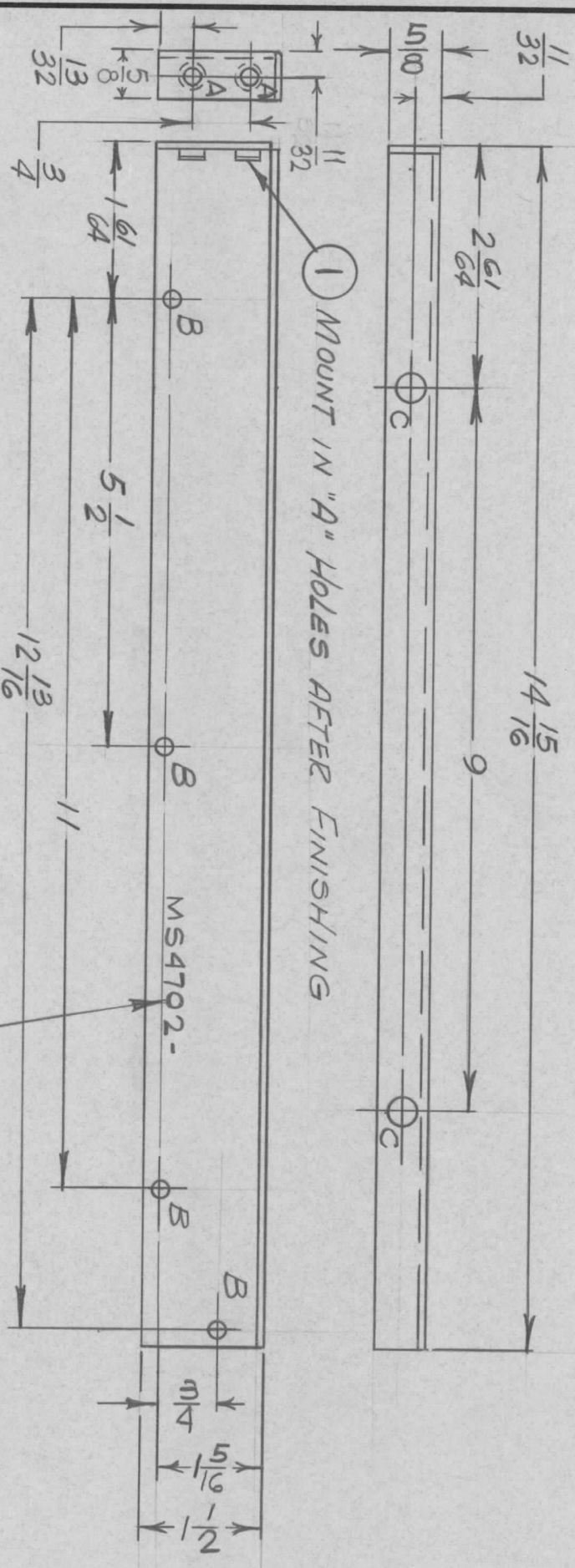
DATE	REV. LTR.
MS4701	\emptyset

SYM	DESCRIPTION	DATE	E.M.N. NO.	DRAFT	CHKD	APPD
Ø	ORIGINAL RELEASE FOR PRODUCTION	10-5-67	#	E		

MS4702 Ø

REVISIONS

HOLE	DESCRIPTION	REQ.
A	.191-.194 DIA.	2
B	3/16 DIA.	4
C	3/8 DIA.	2



METAL STAMP TMC PART NO. 1/8
HIGH GOTHIC W/LATEST REV.
LETTER

MS4702-1, AS SHOWN (LEFT SIDE)
MS4702-2, OPPOSITE HAND (RIGHT SIDE)

UNLESS OTHERWISE SPECIFIED:

1. USE MATERIAL THICKNESS FOR MAXIMUM RADIUS ON ALL BENDS
2. ALL ANGULAR BENDS 90 DEGREES
3. REMOVE ALL BURRS AND SHARP EDGES
4. MOUNT INSERTS AFTER FINISHING

REQ'D.	ITEM	PART NUMBER	DESCRIPTION	SYMBOL
2	1	NT129-632-4	NUT, ROUND, SWAGE	A

MATERIAL	FINISH	TITLE
.064 THK. ALUMINUM 5052-H32	3404 YEL. IRIDITE	THE TECHNICAL MATERIEL CORP. MAMARONECK, NEW YORK

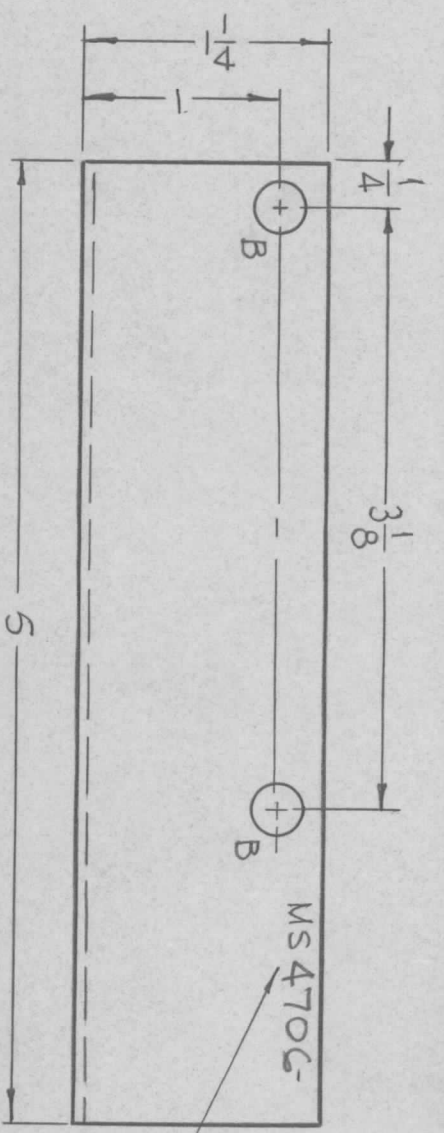
UNLESS OTHERWISE SPECIFIED	DRAWN	DATE	FINAL APPROVAL	DATE
DIMENSIONS ARE IN INCHES AND INCLUDE CHEMICALLY APPLIED OR PLATED FINISHES	H. Austin	7-26-65	Ally May	10/5/65

DECIMALS	TOLERANCES	FRACTIONS	MECH. DES.	DATE	SHEET
X ± .05 .XX ± .01 .XXX ± .005		± 1/64 ANGLES ± 0° 30'	Mech. Des.	9/16/65	MS4702

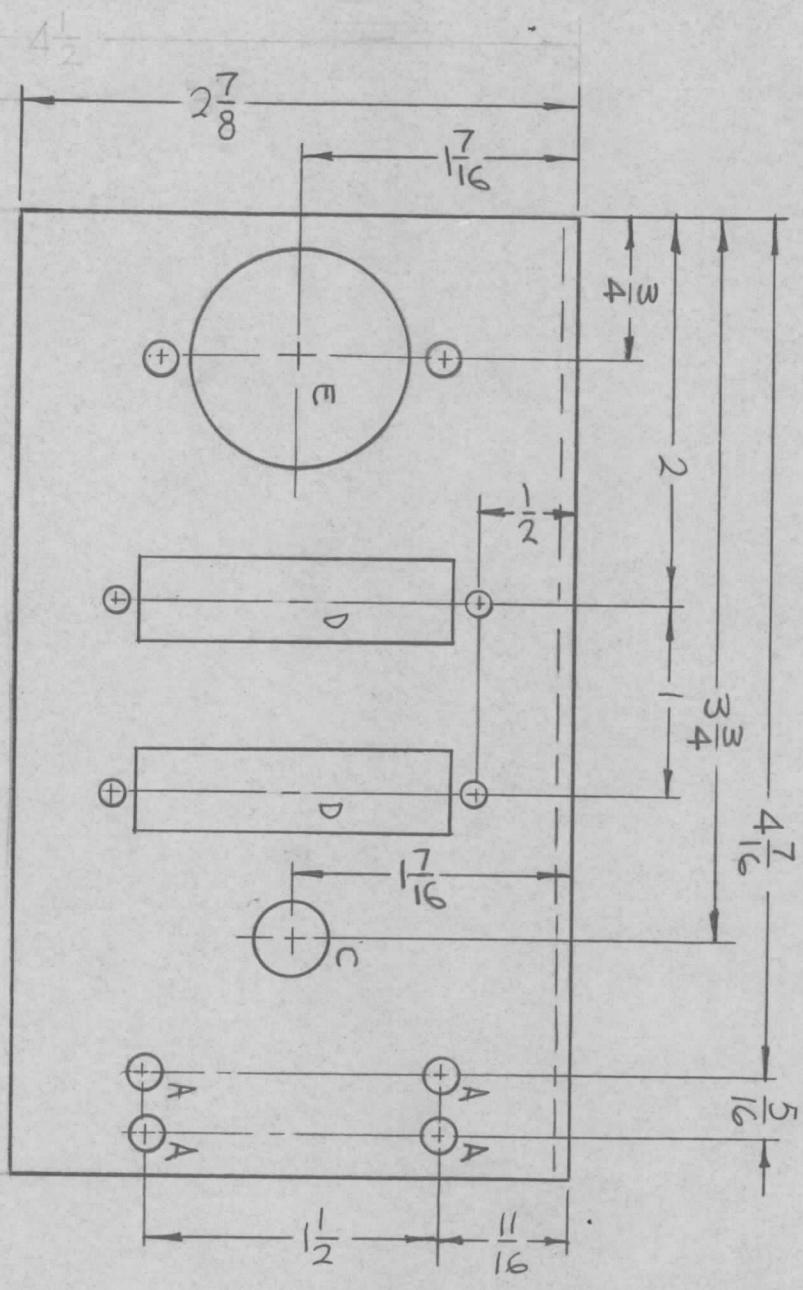
QTY./UNIT	MODEL USED ON	ASS'Y. NO.
1:2	STR-1	

NOTES

THE CONTENTS OF THIS DRAWING ARE THE EXCLUSIVE PROPERTY OF THE TECHNICAL MATERIEL CORP. ITS UNAUTHORIZED USE OR REPRODUCTION IN WHOLE OR IN PART IS STRICTLY FORBIDDEN.



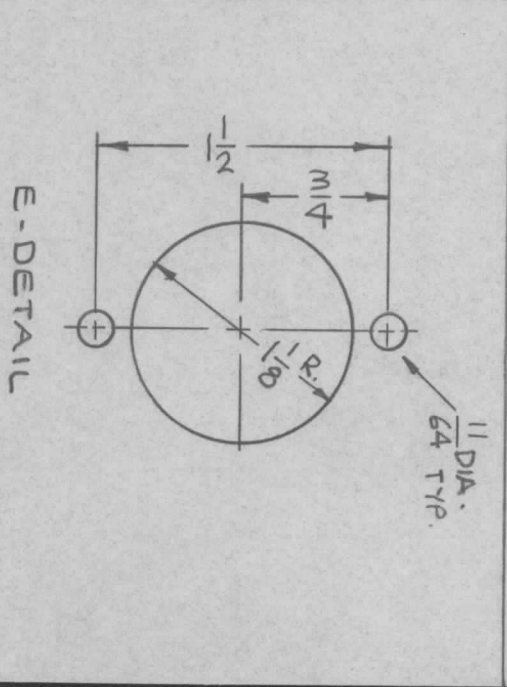
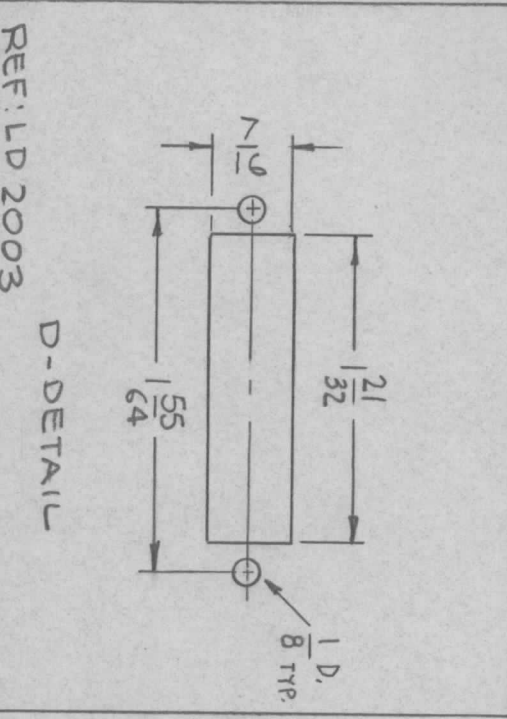
MARK TMC
PART NO.
1/8 HIGH GOTHIC
W/LATEST REV.
LETTER.



MS 4706

REVISIONS		DATE	E.M.N. NO.	DRAFT	CHKD	APPD
SYM	DESCRIPTION					
X1	2-7/8 WAS 4-1/2, 1 C HOLE DELETED	7-28-65	X1	APB		
Ø	ORIGINAL RELEASE FOR PRODUCTION	3-3-66	m	Jc	APB	anc

HOLES	DESCRIPTION	REQ.
A	11/64 DIA.	4
B	1/4 DIA.	2
C	3/8 DIA.	1
D	SEE DETAIL	2
E	SEE DETAIL	1



QTY./UNIT	1	MODEL USED ON	TST-10K	ASSY. NO.	
SCALE	1:1	CODE	A		

UNLESS OTHERWISE SPECIFIED:

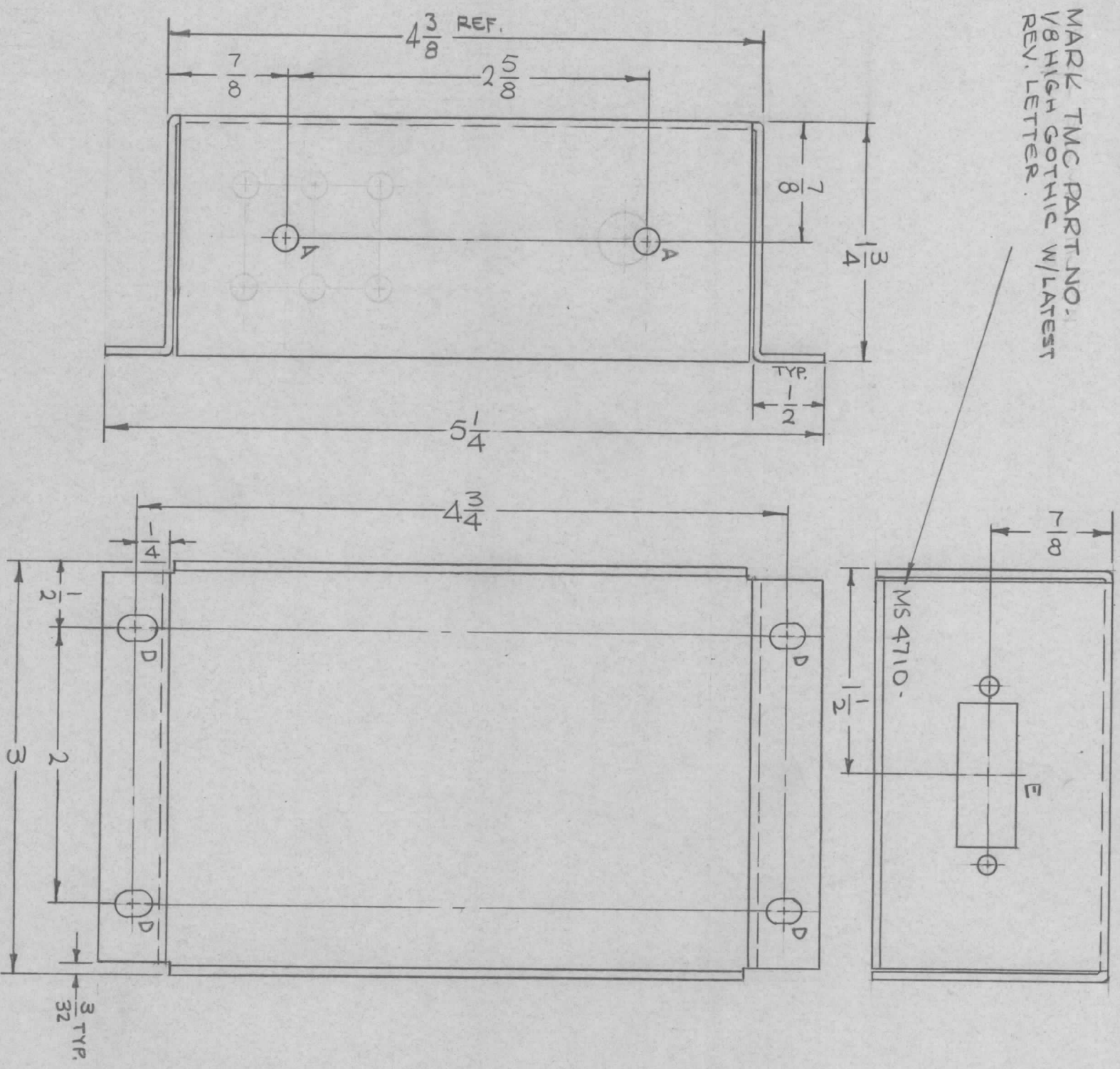
- USE MATERIAL THICKNESS FOR MAXIMUM RADIUS ON ALL BENDS
- ALL ANGULAR BENDS 90 DEGREES
- REMOVE ALL BURRS AND SHARP EDGES

NOTES

THE CONTENTS OF THIS DRAWING ARE THE EXCLUSIVE PROPERTY OF THE TECHNICAL MATERIEL CORP. ITS UNAUTHORIZED USE OR REPRODUCTION IN WHOLE OR IN PART IS STRICTLY FORBIDDEN.

REQ'D.	ITEM	PART NUMBER	DESCRIPTION	SYMBOL
	F. BUDETTI	REF: LD 2003		
MATERIAL				
.064 THICK ALUMINUM				
S052-H32				
FINISH				
S404 YEL. IRIDITE				
LIST OF MATERIAL			THE TECHNICAL MATERIEL CORP.	
			MAMARONECK, NEW YORK	
TITLE				
BRACKET, MTG. COMPONENTS				
DRAWN	CHECKED	DATE	FINAL APPROVAL	DATE
APB	qps	7-26-65	[Signature]	7/26/65
ELECT. DES.	MECH. DES.	DATE		
	ANC	3-2-66		
SHEET			MS 4706	
REV. LTR.				

MARL TMC PART NO. 1
 1/8 HIGH GOTHIC W/LATEST
 REV. LETTER

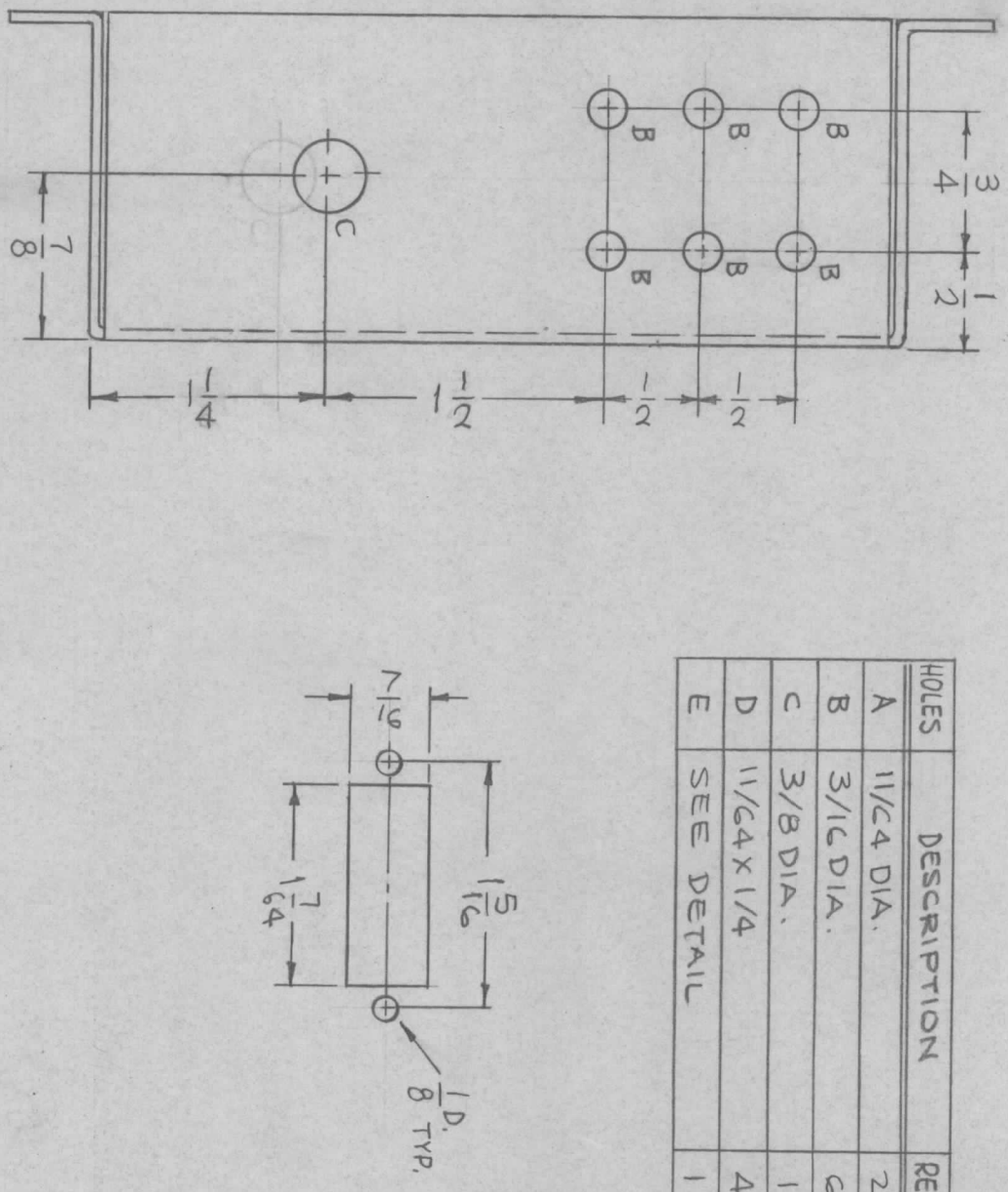


MS 4710

SYM	DESCRIPTION	DATE	E.M.N. NO.	DRAFT	CHKD	APPD
Ø	ORIGINAL RELEASE FOR PRODUCTION	3-26-65	-M-	Jc	QFB	anc

REVISIONS

HOLES	DESCRIPTION	REQ.
A	11/64 DIA.	2
B	3/16 DIA.	6
C	3/8 DIA.	1
D	11/64 X 1/4	4
E	SEE DETAIL	1



REF: LD1979.
 F. BUDETTI

REQD. ITEM	PART NUMBER	DESCRIPTION	SYMBOL
LIST OF MATERIAL			

MATERIAL
 .064 THICK ALUMINUM
 5052-H32

FINISH
 S404 YEL. IRIDITE

TITLE
 THE TECHNICAL MATERIEL CORP.
 MAMARONECK, NEW YORK

CHASSIS, CONTROL

DRAWN	CHECKED	ELECT. DES.	MECH. DES.	DATE	DATE	DATE	DATE	DATE
WBY	QFB		MC	7-30-65	3-2-66			

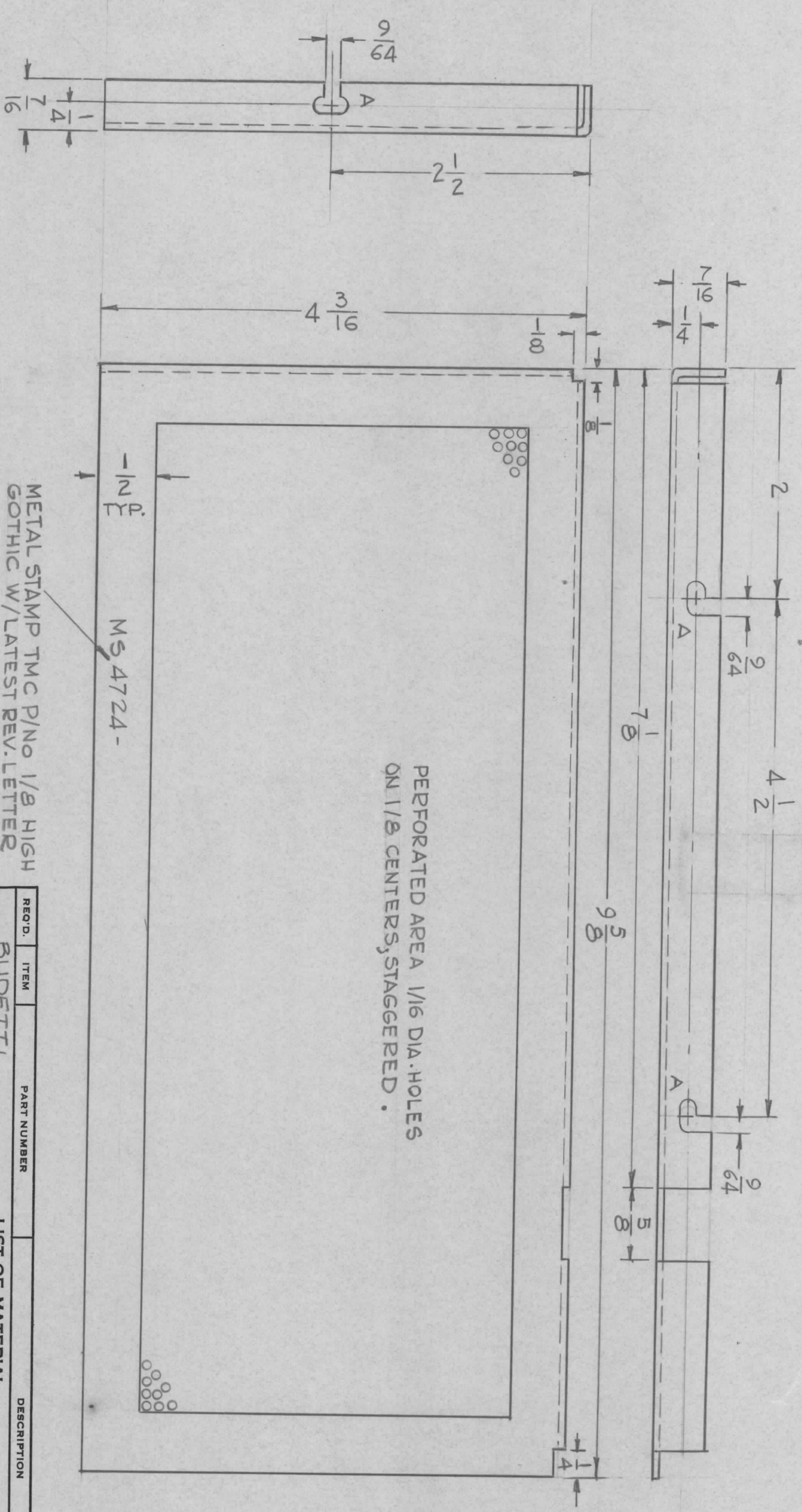
QTY./UNIT	MODEL USED ON	ASSY. NO.
1	TST-10K	

SCALE 1:1

CODE A

- UNLESS OTHERWISE SPECIFIED:
1. USE MATERIAL THICKNESS FOR MAXIMUM RADIUS ON ALL BENDS
 2. ALL ANGULAR BENDS 90 DEGREES
 3. REMOVE ALL BURRS AND SHARP EDGES
- NOTES

-HOLE -
A - 9/64 x 9/32 SLOT



PERFORATED AREA 1/16 DIA. HOLES
ON 1/8 CENTERS, STAGGERED.

METAL STAMP TMC P/NO 1/8 HIGH
GOTHIC W/LATEST REV. LETTER

REVISIONS		DATE	E.M.N. NO.	DRAFT	CHKD	APPD
1	ORIGINAL RELEASE FOR PRODUCTION	8/2/65		JMK		

REQ'D.	ITEM	PART NUMBER	DESCRIPTION	SYMBOL
	BUDETTI		LIST OF MATERIAL	
	MATERIAL	.051 THICK ALUMINUM 5052-432	THE TECHNICAL MATERIEL CORP. MAMARONECK, NEW YORK	
	FINISH	S404 YEL. IRIDITE	COVER, PERFORATED, DRIVER	

1	KIT 232A	ASS'Y. NO.
QTY./UNIT	MODEL USED ON	
SCALE	CODE	
1:1		

UNLESS OTHERWISE SPECIFIED
DIMENSIONS ARE IN INCHES AND INCLUDE
CHEMICALLY APPLIED OR PLATED FINISHES

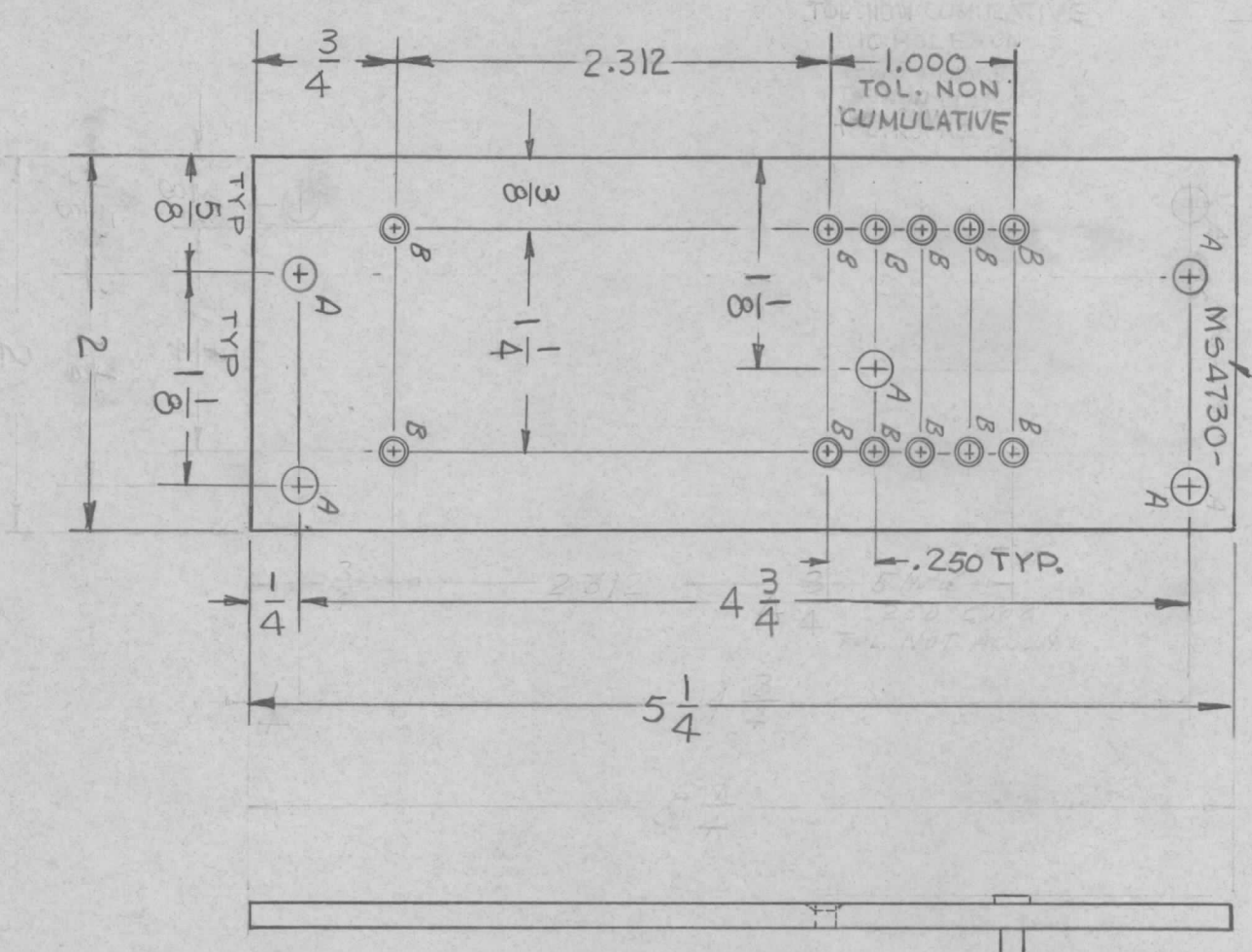
DECIMALS
.X ± .05
.XX ± .01
.XXX ± .005

TOLERANCES

FRACTIONS
± 1/64
ANGLES
± 0° 30'

NOTES

METAL STAMP TMC P/No. 1/8 HIGH GOTHIC WITH LATEST REVISION LETTER



1 MOUNT IN ALL 'B' HOLES AFTER FINISHING

MS4730

SYM	DESCRIPTION	DATE	E.M.N. NO.	DRAFT	CHKD	APPD
Ø	ORIGINAL RELEASE FOR PRODUCTION	10/26/65	Ø			

REVISIONS

HOLE	DESCRIPTION	REQ.
A	11/64 DIA.	4
B	.110 DIA - CSK 60° TO .120 DIA.	12

REQ'D.	ITEM	PART NUMBER	DESCRIPTION	SYMBOL
12	1	JJ219-18-9	JACK, TIP	

LIST OF MATERIAL REF: SK10054

MATERIAL	TITLE
1/8 THK ALUMINUM 5052-H32	THE TECHNICAL MATERIEL CORP. MAMARONECK, NEW YORK

FINISH	TITLE
S404 YELL IRIDITE	PLATE, MTG. PC BOARD

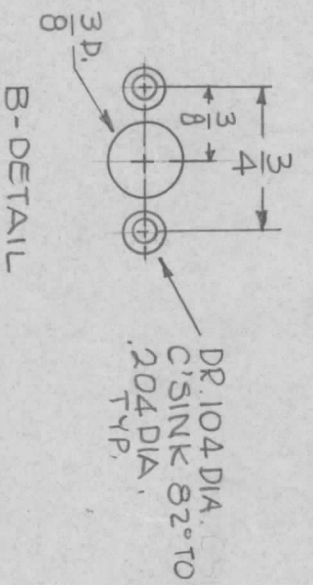
UNLESS OTHERWISE SPECIFIED DIMENSIONS ARE IN INCHES AND INCLUDE CHEMICALLY APPLIED OR PLATED FINISHES	DRAWN	CHECKED	ELECT. DES.	MECH. DES.	DATE	DATE	DATE	DATE	DATE
DECIMALS X ± .05 .XX ± .01 .XXX ± .005	BYM	QCB			9/29/65	10/1/65	10/1/65	10/1/65	10/1/65
TOLERANCES									
FRACTIONS ± 1/64 ANGLES ± 0° 30'									

QTY./UNIT	MODEL USED ON	ASSY. NO.
1	RASB-1 RARB-1	A5134 A5127

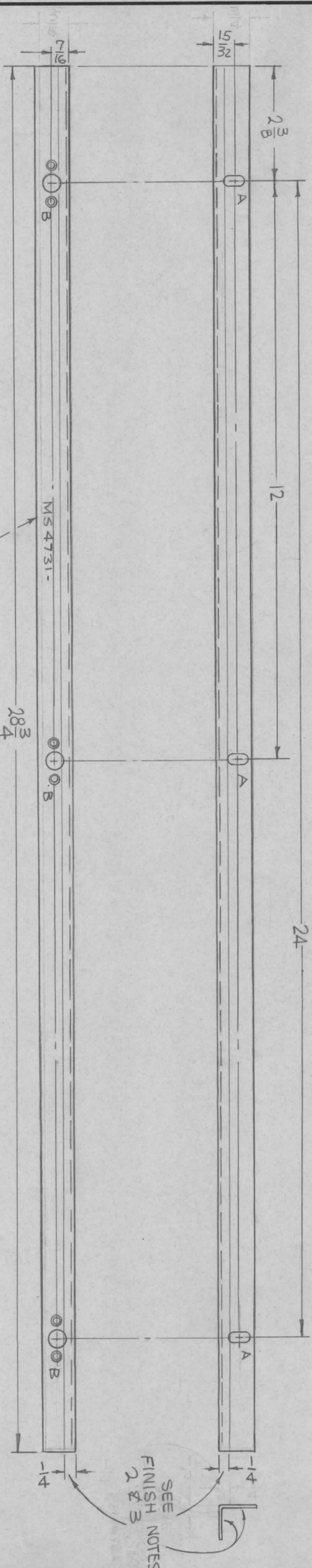
NOTES

THE CONTENTS OF THIS DRAWING ARE THE EXCLUSIVE PROPERTY OF THE TECHNICAL MATERIEL CORP. ITS UNAUTHORIZED USE OR REPRODUCTION IN WHOLE OR IN PART IS STRICTLY FORBIDDEN.

HOLES	DESCRIPTION	REQ.
A	3/8 X 3/16 SLOTS	3
B	SEE DETAIL	3



SYMBOL		DESCRIPTION		DATE	E.M.N. NO.	DRAFT	CHKD	APPD
X1	Ø	7/16 WAS 3/8, 3/4 WAS 5/8 (LOWER VIEW)	ORIGINAL RELEASE FOR PRODUCTION	11-11-65	X1	MB	JS	JS
Ø				3366		JS		JS



UNLESS OTHERWISE SPECIFIED:

1. USE MATERIAL THICKNESS FOR MAXIMUM RADIUS ON ALL BENDS
2. ALL ANGULAR BENDS 90 DEGREES
3. REMOVE ALL BURRS AND SHARP EDGES

FINISH NOTES:

1. S404 - IRIDITE 14-2 AL-COAT. — ALL SURFACES
2. S114 - ZINC CHROMATE PRIMER — AREAS SHOWN
3. S115 - SMOOTH GRAY ENAMEL — AREAS SHOWN

MARK TMC PART NO.
1/8 HIGH GOTHIC W/LATEST
REV. LETTER.

NOTES

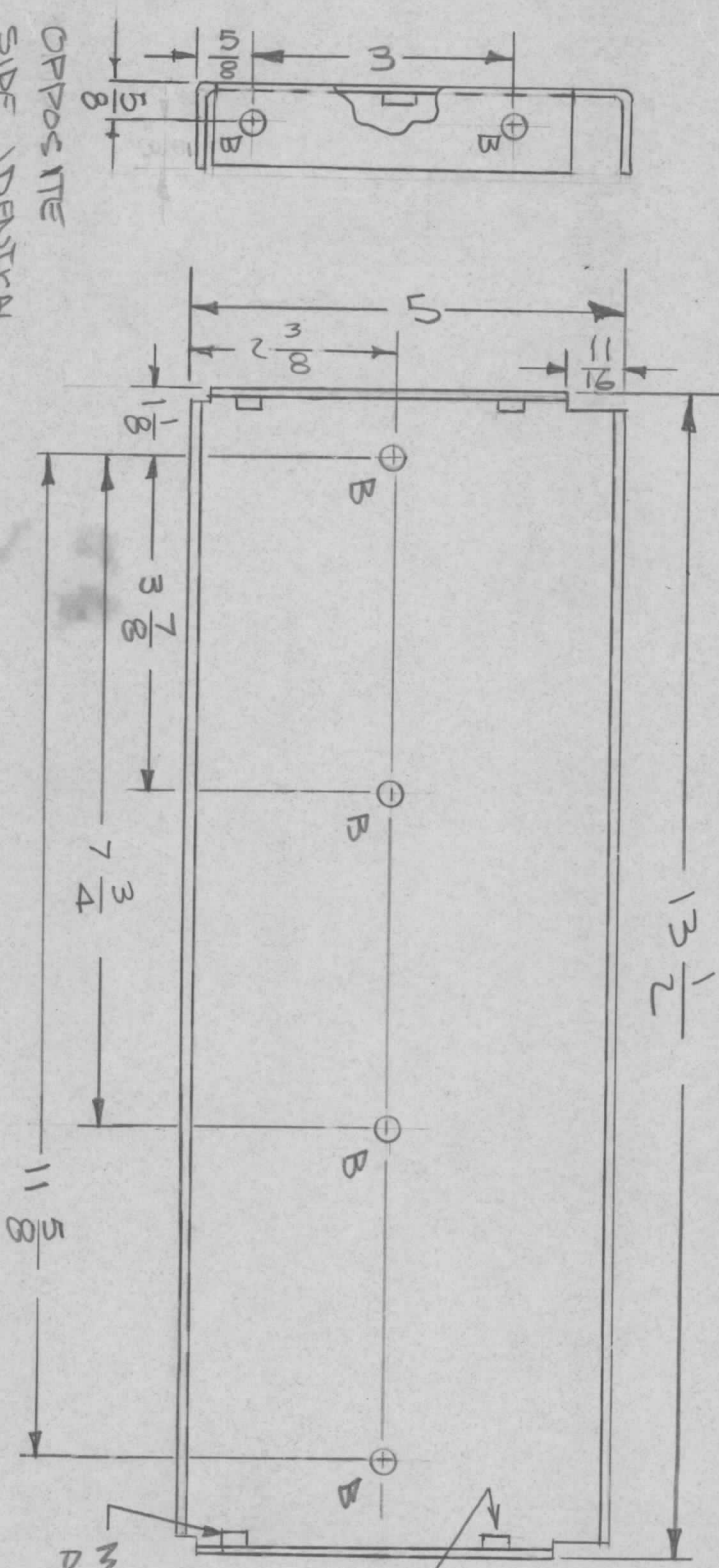
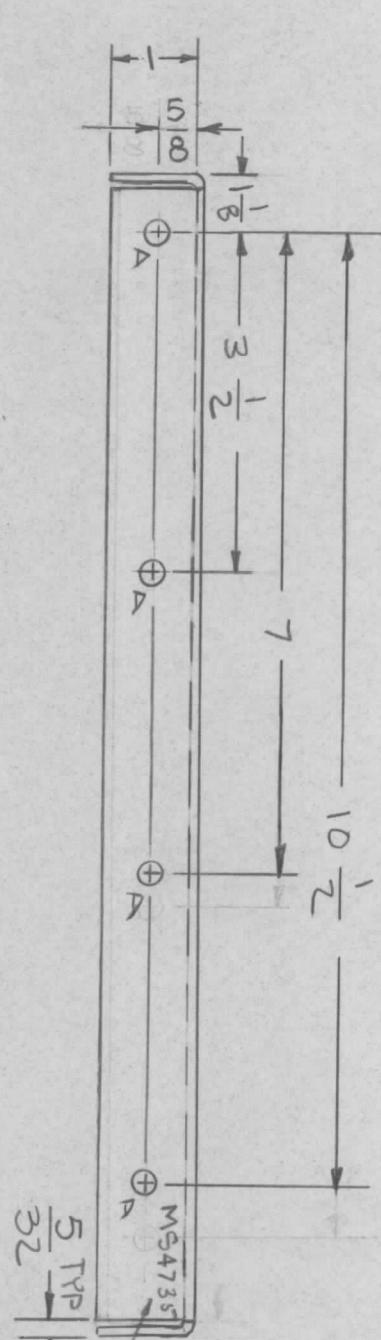
QTY./UNIT	1	TST-10K	MODEL USED ON	ASSY. NO.
SCALE	1/2"=1"	A		

REQ'D.	ITEM	PART NUMBER	DESCRIPTION	SYMBOL
	F. BUDETTI		THE TECHNICAL MATERIEL CORP. MAMARONECK, NEW YORK	
	MATERIAL	1/8 X 3/4 X 3/4 ALUMINUM		
	FINISH	SEE NOTE		

DRAWN	CHECKED	ELECT. DES.	MECH. DES.	DATE	DATE	DATE	DATE
MB	JS			8-27-65	3-2-66		

REVISIONS		DATE	E.M.N. NO.	DRAFT	CHKD	APPD
SYM	DESCRIPTION					
Ø	ORIGINAL RELEASE FOR PRODUCTION	8/31/65	Ø	HV		

MS4735 Ø



OPPOSITE SIDE IDENTICAL

METAL STAMP TMC PART NO. 1/8 HIGH GOTHIC. WITH LATEST REV. LETTER

HOLE	DESCRIPTION	REQ
A	15/64 DIA	4
B	.251-.254 DIA	8

REQD.	ITEM	PART NUMBER	DESCRIPTION	SYMBOL
B	1	NT 129-1032-6	NUT, PLAIN, SPRING	B
MATERIAL				
BUDETTI				
1/8 THICK ALUM				
5052-H32				

LIST OF MATERIAL		THE TECHNICAL MATERIEL CORP.	
MATERIAL		MAMARONECK, NEW YORK	
FINISH	TITLE		
S404 IRIDITE 14-2 AL COAT	PLATE, SIDE, LEFT		

QTY./UNIT	MODEL USED ON	ASSY. NO.
1	HVRB-2	
1	HVRB-2	
SCALE	CODE	
1/2=1	1A	

UNLESS OTHERWISE SPECIFIED:

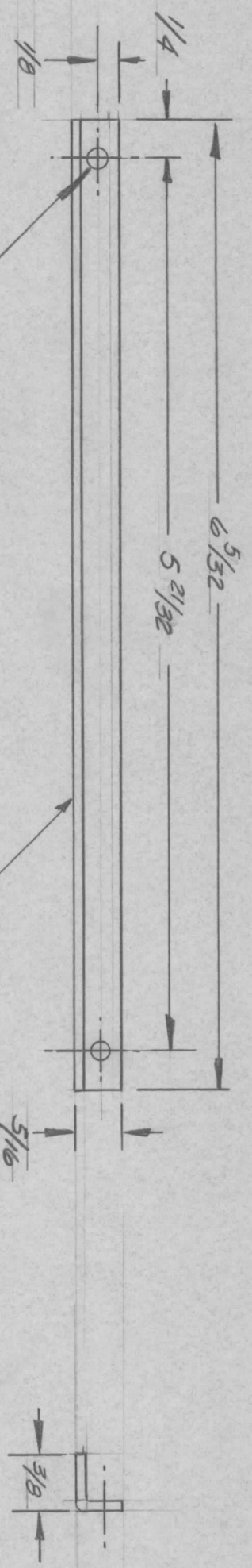
1. USE MATERIAL THICKNESS FOR MAXIMUM RADIUS ON ALL BENDS
2. ALL ANGULAR BENDS 90 DEGREES
3. REMOVE ALL BURRS AND SHARP EDGES
4. MOUNT INSERTS AFTER FINISHING

NOTES

THE CONTENTS OF THIS DRAWING ARE THE EXCLUSIVE PROPERTY OF THE TECHNICAL MATERIEL CORP. ITS UNAUTHORIZED USE OR REPRODUCTION IN WHOLE OR IN PART IS STRICTLY FORBIDDEN.

REVISIONS						
SYM	DESCRIPTION	DATE	E.M.N. NO.	DRAFT	CHKD	APPD
X1	MATERIAL WAS .062 THK ALUM.	9-2-65	X1	E.D.L.		
Ø	METAL STAMP & FINISH NOTES ADDED					
Ø	ORIGINAL RELEASE FOR PRODUCTION	8/14/69	Ø			

MS4738



1/8 DIA. (.125 DIA.)
2 HOLES

METAL STAMP TMC P/No 1/8 HIGH
GOTHIC W/LATEST REV. LETTER

UNLESS OTHERWISE SPECIFIED:

1. USE MATERIAL THICKNESS FOR MAXIMUM RADIUS ON ALL BENDS
2. ALL ANGULAR BENDS 90 DEGREES
3. REMOVE ALL BURRS AND SHARP EDGES

NOTES

QTY./UNIT	CDN-1	MODEL USED ON	ASSY. NO.
SCALE	DO NOT SCALE	CODE	A

THE CONTENTS OF THIS DRAWING ARE THE EXCLUSIVE PROPERTY OF THE TECHNICAL MATERIEL CORP. ITS UNAUTHORIZED USE OR REPRODUCTION IN WHOLE OR IN PART IS STRICTLY FORBIDDEN.

REQ'D.	ITEM	PART NUMBER	DESCRIPTION	SYMBOL
		5015-13	LIST OF MATERIAL	

MATERIAL	.062 THK ALUMINUM 5052-H32
FINISH	5A04 YEL. IRIDITE

TITLE
STIFFENER, PC BOARD

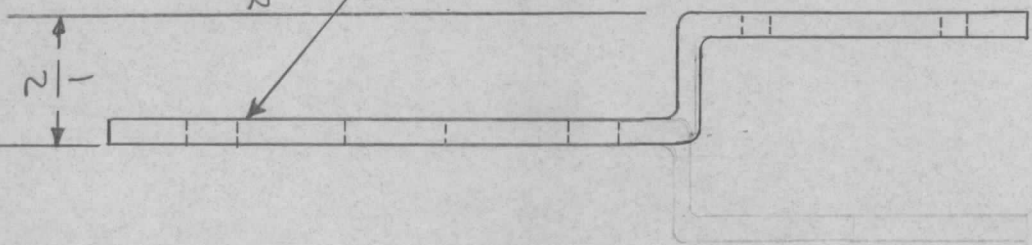
THE TECHNICAL MATERIEL CORP.
MAMARONECK, NEW YORK

UNLESS OTHERWISE SPECIFIED DIMENSIONS ARE IN INCHES AND INCLUDE CHEMICALLY APPLIED OR PLATED FINISHES	DECIMALS .X ± .05 .XX ± .01 .XXX ± .005	TOLERANCES	FRACTIONS ± 1/64 ANGLES ± 0° 30'
DRAWN E. D. Jensen	DATE 10/14/64	CHECKED [Signature]	DATE 11-6-68
ELECT. DES. [Signature]	DATE 10-6-68	MECH. DES. [Signature]	DATE 10-6-68
FINAL APPROVAL [Signature]	DATE 9/12/69	MS.4738	SHEET
			REV. LTR.

SYM	DESCRIPTION	DATE	E.M.N. NO.	DRAFT	CHKD	APPD
X1	1/2 R UNS 1" 7/8 DIM. ADDED	9/2/69	11	✓		
Ø	ORIGINAL RELEASE FOR PRODUCTION	8/2/69		Ø		

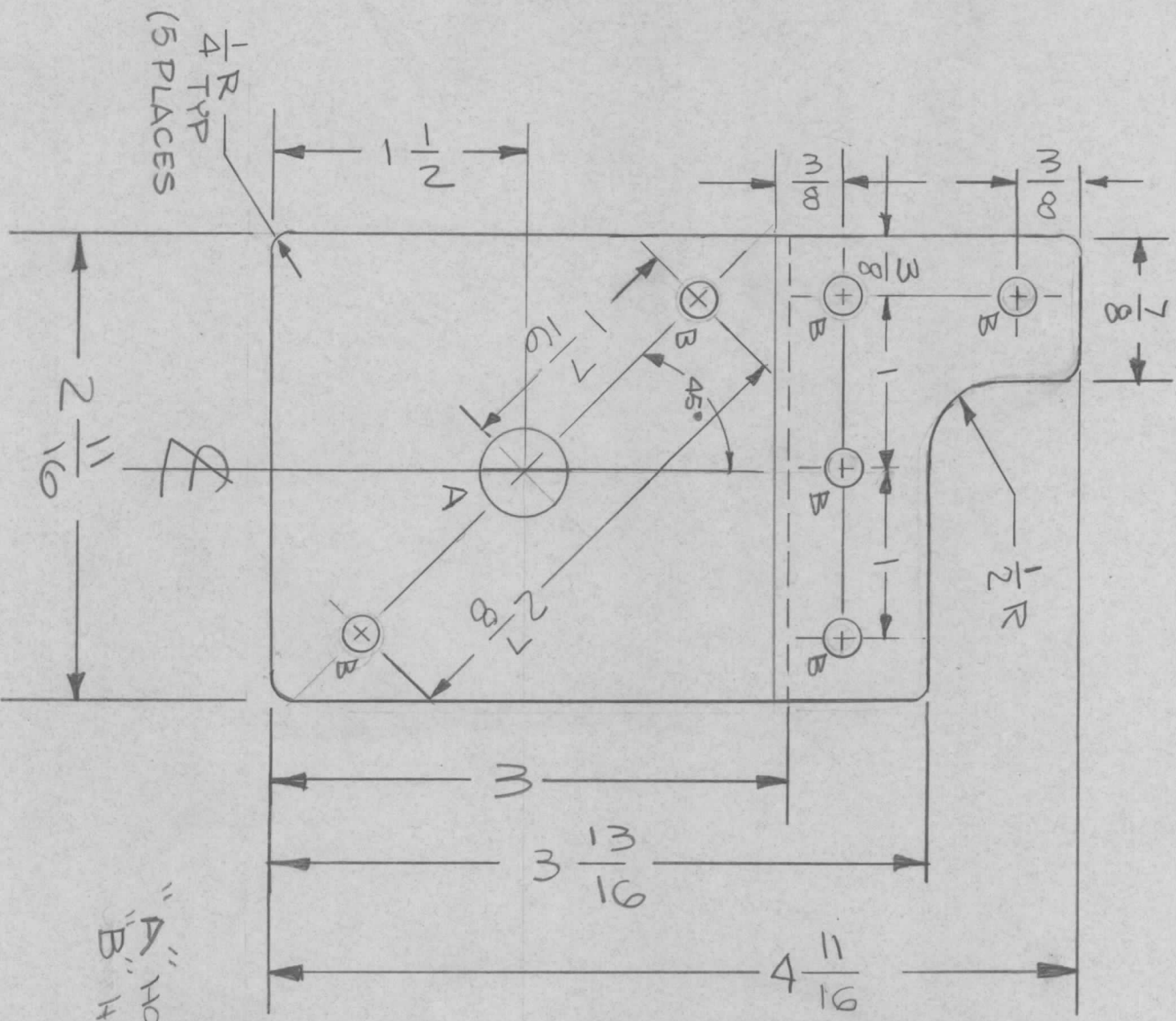
MS4754

REVISIONS



METAL STAMP TMC
PART NO. 1/8 HIGH
W/LATEST REV. LETTER

"A" HOLE 1/2 DIA
"B" HOLES 13/64 DIA



NOTES

QTY./UNIT	1	MODEL USED ON	RFD-2	ASSY. NO.
SCALE		CODE		

THE CONTENTS OF THIS DRAWING ARE THE EXCLUSIVE PROPERTY OF THE TECHNICAL MATERIEL CORP. ITS UNAUTHORIZED USE OR REPRODUCTION IN WHOLE OR IN PART IS STRICTLY FORBIDDEN.

LIST OF MATERIAL

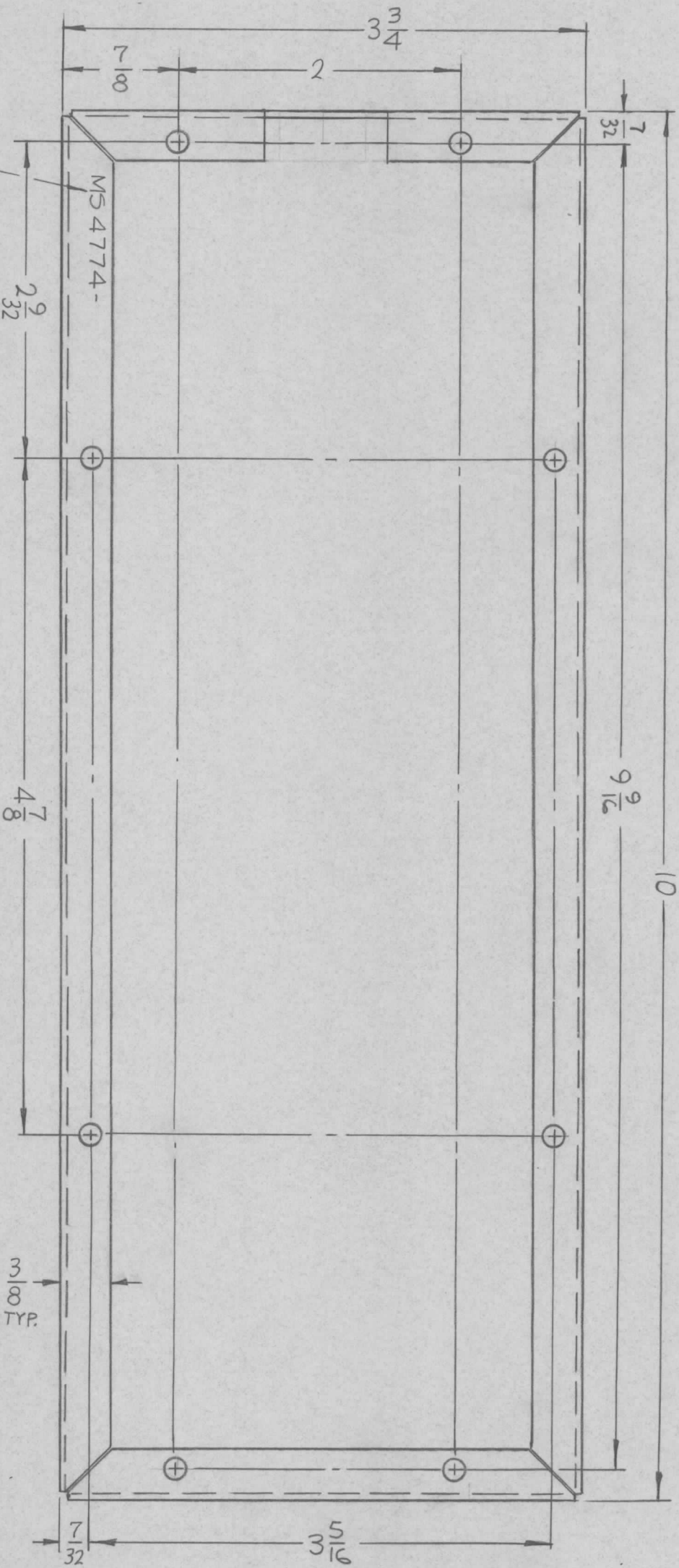
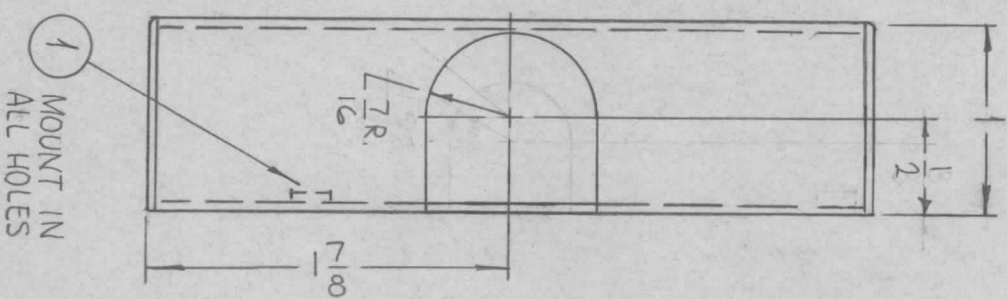
REQ'D.	ITEM	PART NUMBER	DESCRIPTION	SYMBOL
	MATERIAL	002 ALUM. 5052-H32	THE TECHNICAL MATERIEL CORP. MAMARONECK, NEW YORK	
	FINISH	S404 IRIDITE	TITLE BRKT, MTG. LOAD CAP.	

DRAWN	ENRZA	DATE	9-10-65	FINAL APPROVAL	DATE
CHECKED		DATE		0208	8/8/69
ELECT. DES.		DATE			
MECH. DES.	HVC	DATE		MS4754	Ø

UNLESS OTHERWISE SPECIFIED
DIMENSIONS ARE IN INCHES AND INCLUDE
CHEMICALLY APPLIED OR PLATED FINISHES

DECIMALS	TOLERANCES	FRACTIONS
.X ± .05		± 1/64
.XX ± .01		ANGLES
.XXX ± .005		± 0° 30'

HOLES:
.161-.164 DIA. 8REQ.



MS4774

REVISIONS		DATE	E.M.N. NO.	DRAFT	CHKD	APPD
Ø	ORIGINAL RELEASE FOR PRODUCTION	3-19-66	Ø	HLA		YR

MARK TMC PART NO.
1/8 HIGH GOTHIC W/LATEST
REV. LETTER.

- UNLESS OTHERWISE SPECIFIED:
1. USE MATERIAL THICKNESS FOR MAXIMUM RADIUS ON ALL BENDS
 2. ALL ANGULAR BENDS 90 DEGREES
 3. REMOVE ALL BURRS AND SHARP EDGES
 4. MOUNT INSERTS AFTER FINISHING

NOTES

Q'TY./UNIT	1	MODEL USED ON	TST-10K	ASS'Y. NO.	A 4369
SCALE	1:1	CODE	A		

THE CONTENTS OF THIS DRAWING ARE THE EXCLUSIVE PROPERTY OF THE TECHNICAL MATERIEL CORP. ITS UNAUTHORIZED USE OR REPRODUCTION IN WHOLE OR IN PART IS STRICTLY FORBIDDEN.

REF: LD 2006

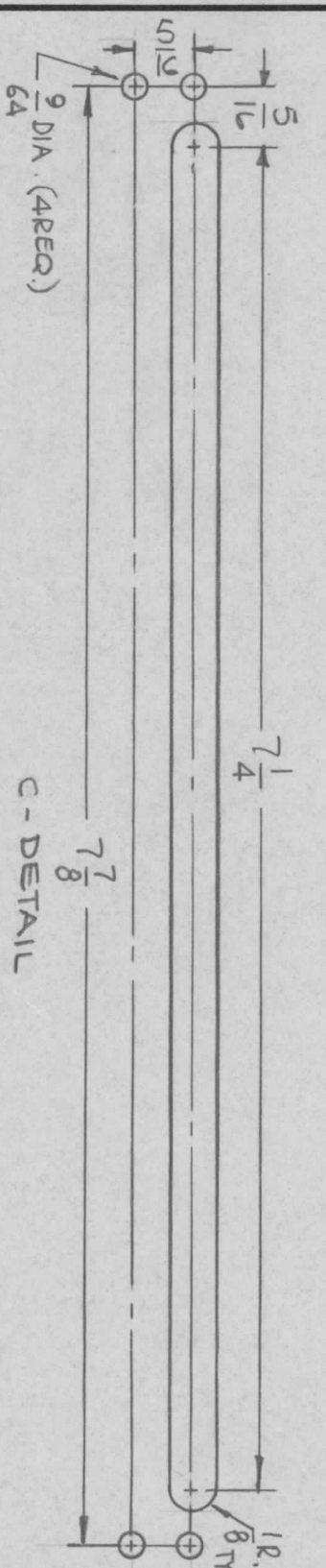
REQ'D.	ITEM	PART NUMBER	DESCRIPTION	SYMBOL
8	1	NT 129-440-3	NUT, PLAIN, SPLINE	

LIST OF MATERIAL		TITLE	
MATERIAL	F. BUDETTI	BOX, CABLE JUNCTION	
	.051 ALUMINUM	MAMARONECK, NEW YORK	
	5052-H32		
FINISH	S404 YEL IRIDITE		

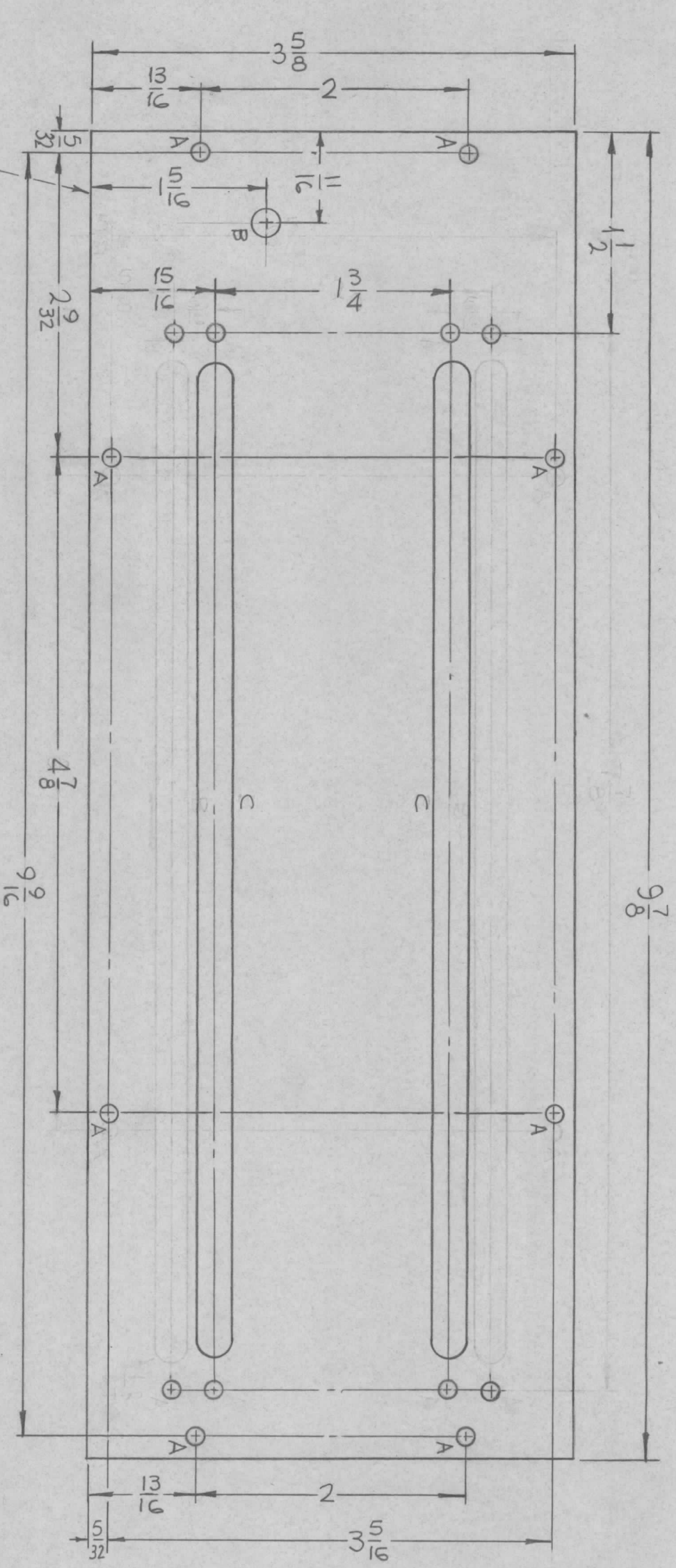
UNLESS OTHERWISE SPECIFIED		DIMENSIONS ARE IN INCHES AND INCLUDE	
DECIMALS	.X ± .05	FRACTIONS	± 1/64
	.XX ± .01	ANGLES	± 0° 30'
	.XXX ± .005	TOLERANCES	

DRAWN	CHECKED	ELECT. DESI	MECH. DES.	DATE	DATE	DATE	DATE
YR	YR	YR	YR	10-11-65	3-14-66	3-14-66	3-14-66

FINAL APPROVAL	DATE	REV. LTR.
MS4774	3-14-66	Ø



REVISIONS		SYM	DESCRIPTION	DATE	E.M.N. NO.	DRAFT	CHKD	APPD
Ø	ORIGINAL RELEASE FOR PRODUCTION			3/14/66	Ø	WAA		WAA



HOLEES:
 A ~ 9/64 DIA. — 8 REQ.
 B ~ 13/64 DIA. — 1 REQ.
 C ~ SEE DETAIL — 2 REQ.

MARK TMC PART NO. (MS4775)
 1/8 HIGH GOTHIC W/LATEST
 REV. LETTER. (ON REAR)

FRONT VIEW

REF. LD 2005-

LIST OF MATERIAL

REQ'D.	ITEM	PART NUMBER	DESCRIPTION	SYMBOL
	F. BUDETTI			
	MATERIAL			
	.081 ALUMINUM			
	5052-H32			
	FINISH			
	S404 YEL. IRIDITE			

THE TECHNICAL MATERIEL CORP.
 MAMARONECK, NEW YORK

TITLE
 COVER, BOX, CABLE JUNCTION

Q'TY./UNIT	1	TST-10K	MODEL USED ON	A4369	ASS'Y. NO.
SCALE	1:1		CODE	A	

UNLESS OTHERWISE SPECIFIED DIMENSIONS ARE IN INCHES AND INCLUDE CHEMICALLY APPLIED OR PLATED FINISHES		TOLERANCES		FRACTIONS		ELECT. DES.		MECH. DES.	
DECIMALS	X ± .05				± 1/64				
	.XX ± .01				ANGLES				
	.XXX ± .005				± 0° 30'				

NOTES

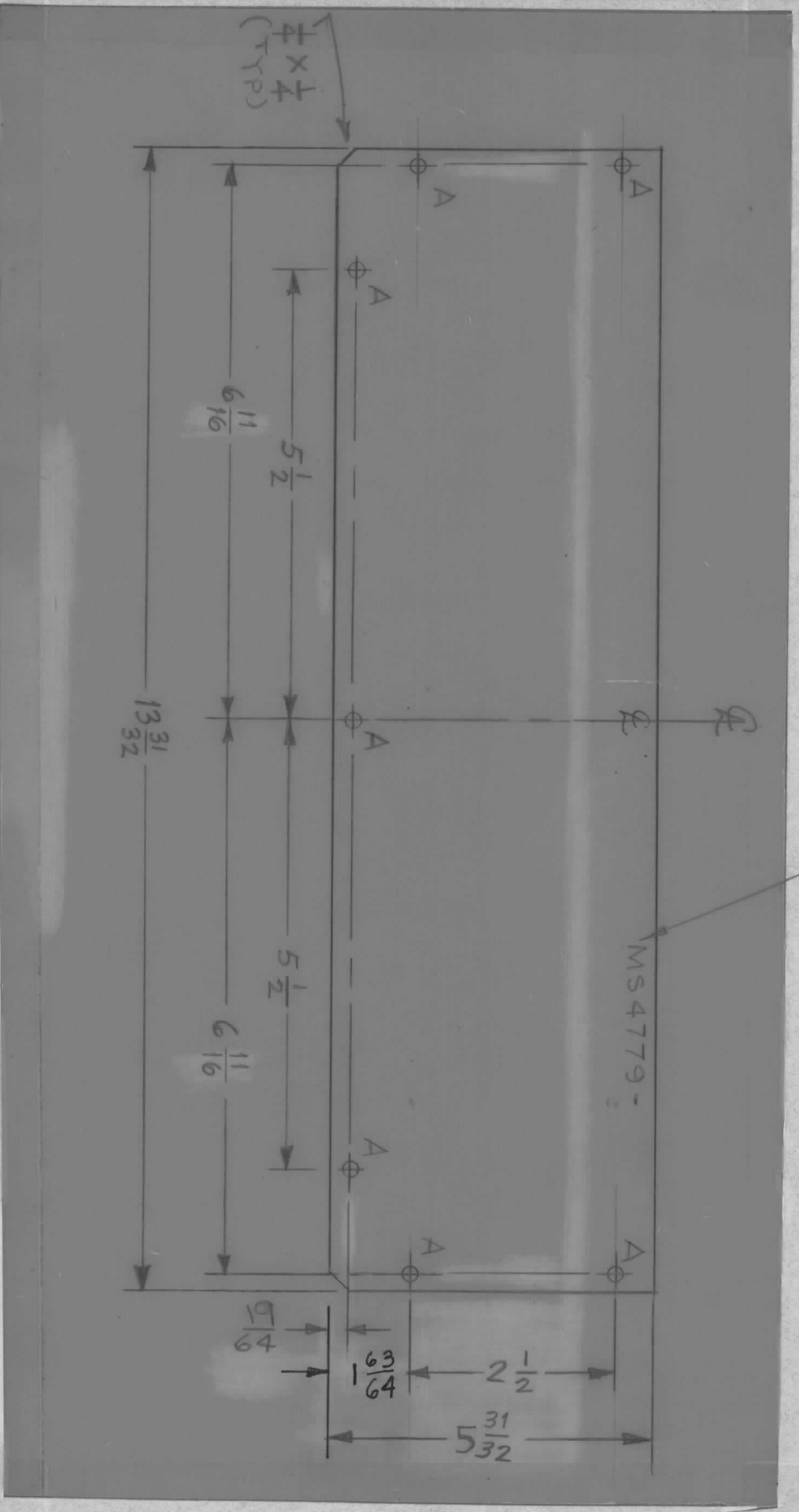
THE CONTENTS OF THIS DRAWING ARE THE EXCLUSIVE PROPERTY OF THE TECHNICAL MATERIEL CORP. ITS UNAUTHORIZED USE OR REPRODUCTION IN WHOLE OR IN PART IS STRICTLY FORBIDDEN.

HOLE	DESCRIPTION	REQ.
A	11/64 DIA.	7

METAL STAMP TMC PART NO. 1/8
HIGH GOTHIC W/LATEST REV. LETTER

MS4779 ϕ

REVISIONS		DATE	EM.N. NO.	DRAFT	CHKD	APPD
ϕ	ORIGINAL RELEASE FOR PROD	12/21/65	ϕ			<i>[Signature]</i>



QTY./UNIT	MODEL USED ON	ASS'Y. NO.
1	RTO-1	
SCALE	CODE	
1:2		

THE CONTENTS OF THIS DRAWING ARE THE EXCLUSIVE PROPERTY OF THE TECHNICAL MATERIEL CORP. ITS UNAUTHORIZED USE OR REPRODUCTION IN WHOLE OR IN PART IS STRICTLY FORBIDDEN.

REQ'D.	ITEM	PART NUMBER	DESCRIPTION	SYMBOL
	MATERIAL	.050 ALUMINUM		
		5052-H32		
	FINISH	S404		
		YELLOW IRIDITE		

LIST OF MATERIAL		DESCRIPTION	SYMBOL
THE TECHNICAL MATERIEL CORP.		XMS104	SH.3
MAMARONECK, NEW YORK			
COVER, TOP			

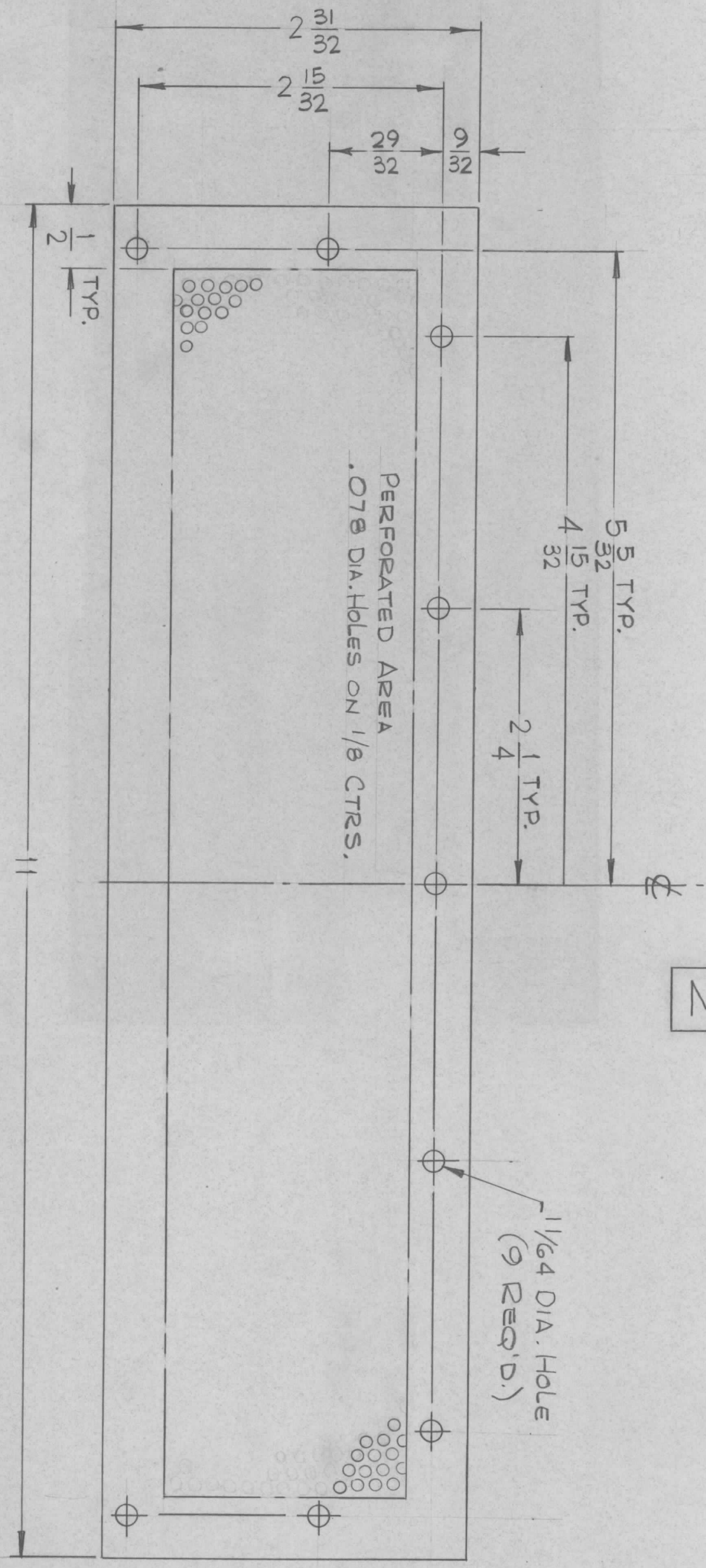
DECIMALS	TOLERANCES	FRACTIONS	ANGLES
X ± .05		± 1/64	
.XX ± .01		ANGLES	
.XXX ± .005		± 0° 30'	

DRAWN	CHECKED	ELECT. DES.	MECH. DES.	DATE	DATE	DATE	DATE
M.T.	<i>[Signature]</i>	<i>[Signature]</i>	<i>[Signature]</i>	12-8-65	12-26-65	12-20-65	12/21/65

FINAL APPROVAL	DATE	REV. LTR.
<i>[Signature]</i>	12/21/65	ϕ

REVISIONS		DATE	E.M.N. NO.	DRAFT	CHKD	APPD
SYM	DESCRIPTION	1/4/66				
Ø	ORIGINAL RELEASE FOR PRODUCTION					

MS4782 Ø



FINISH

1. S104 - PASSIVATE
2. S114 - ZINC CHROMATE PRIMER
3. S115 - SMOOTH GRAY ENAMEL

NOTES

QTY./UNIT	2	MODEL USED ON	TOC-5	ASSY. NO.	
SCALE	1:1				

UNLESS OTHERWISE SPECIFIED DIMENSIONS ARE IN INCHES AND INCLUDE CHEMICALLY APPLIED OR PLATED FINISHES

DECIMALS: .X ± .05, .XX ± .01, .XXX ± .005

FRACTIONS: ± 1/64, ANGLES: ± 0° 30'

TOLERANCES

SEE NOTES

REQ'D.	ITEM	PART NUMBER	DESCRIPTION	SYMBOL
			LIST OF MATERIAL XMS 102 SH-6 OF 12	

MATERIAL		16 GA STAINLESS STEEL	
FINISH		SEE NOTES	
TITLE		SCREEN	

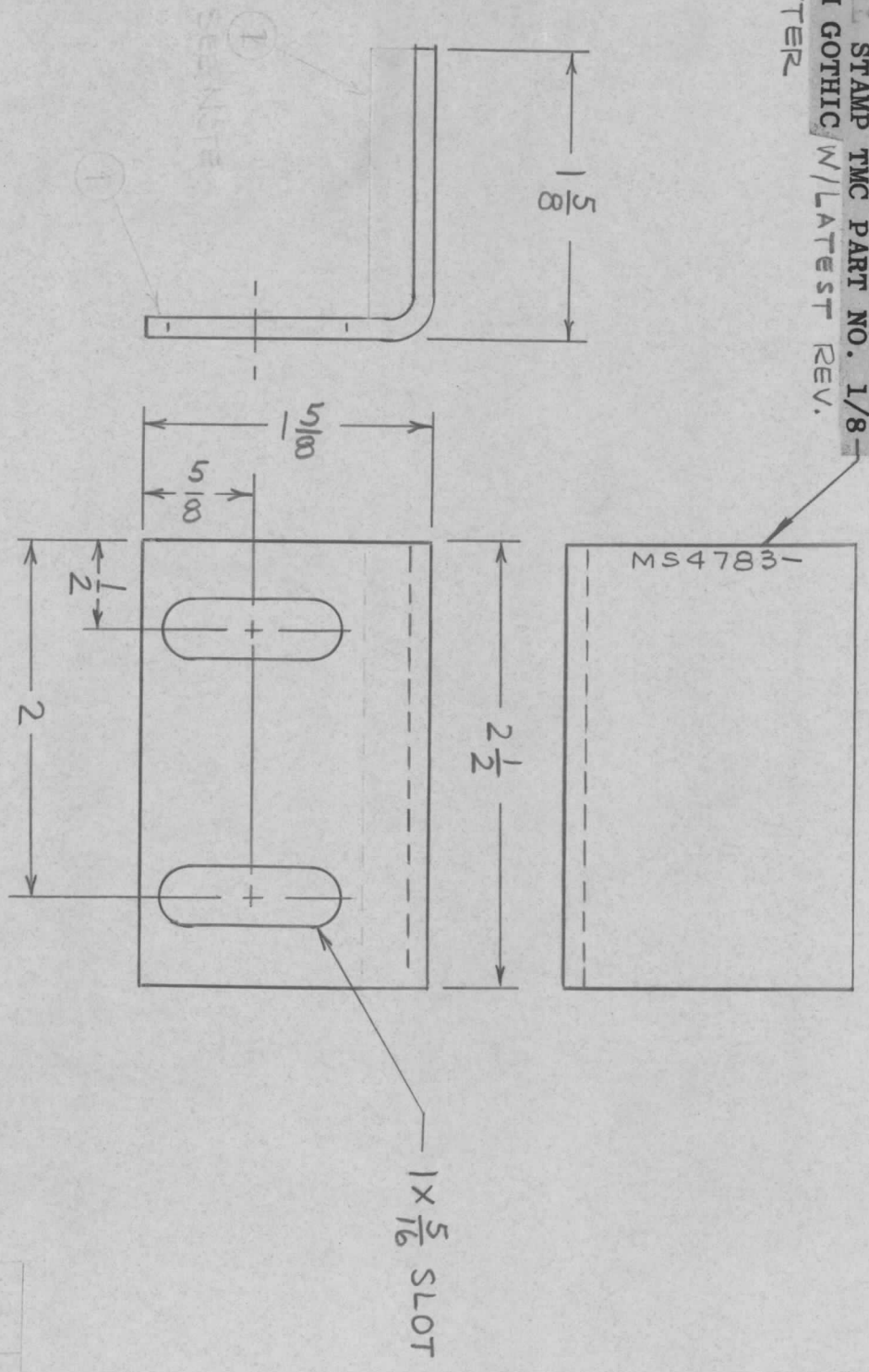
THE TECHNICAL MATERIEL CORP.
MAMARONECK, NEW YORK

DRAWN	H. AUSTIN	DATE	12-16-65	FINAL APPROVAL		DATE	
CHECKED	Fido	DATE	1-14-66				
ELECT. DES.	G. Swabla	DATE	1-10-66				
MECH. DES.		DATE					
SHEET			MS4782	REV. LTR.			

MS4783 Ø

REVISIONS						
SYM	DESCRIPTION	DATE	E.M.N. NO.	DRAFT	CHKD	APPD
Ø	ORIGINAL RELEASE FOR PRODUCTION	1/14/66				MS

STAMP TMC PART NO. 1/8
HIGH GOTHIC W/LATEST REV.
LETTER



NOTE: DETAIL SHOWN BEHIND 2 1/2" MOUNT AFTER FINISHING AS SHOWN

QTY./UNIT: 8
MODEL USED ON: TOC-5
ASSY. NO.:

SCALE: 1" = 1" (implied)
THE CONTENTS OF THIS DRAWING ARE THE EXCLUSIVE PROPERTY OF THE TECHNICAL MATERIAL CORP. ITS UNAUTHORIZED USE OR REPRODUCTION IN WHOLE OR IN PART IS STRICTLY FORBIDDEN.

REQ'D.	ITEM	PART NUMBER	DESCRIPTION	SYMBOL
1	1		RUBBER ROAM 1/4" THICK	
1	1		SCREW 1/4" X 1/2"	

LIST OF MATERIAL		DESCRIPTION		SYMBOL	
MATERIAL		XMS102 SH.11 OF 12			
FINISH		S404 IRIDITE 14-2			
AL-COAT					

UNLESS OTHERWISE SPECIFIED DIMENSIONS ARE IN INCHES AND INCLUDE CHEMICALLY APPLIED OR PLATED FINISHES		TOLERANCES		FRACTIONS	
DECIMALS	X ± .05		± 1/64		
	.XX ± .01		ANGLES		
	.XXX ± .005		± 0° 30'		

TITLE: BRACKET, MOUNTING CASE
THE TECHNICAL MATERIAL CORP.
MAMARONECK, NEW YORK

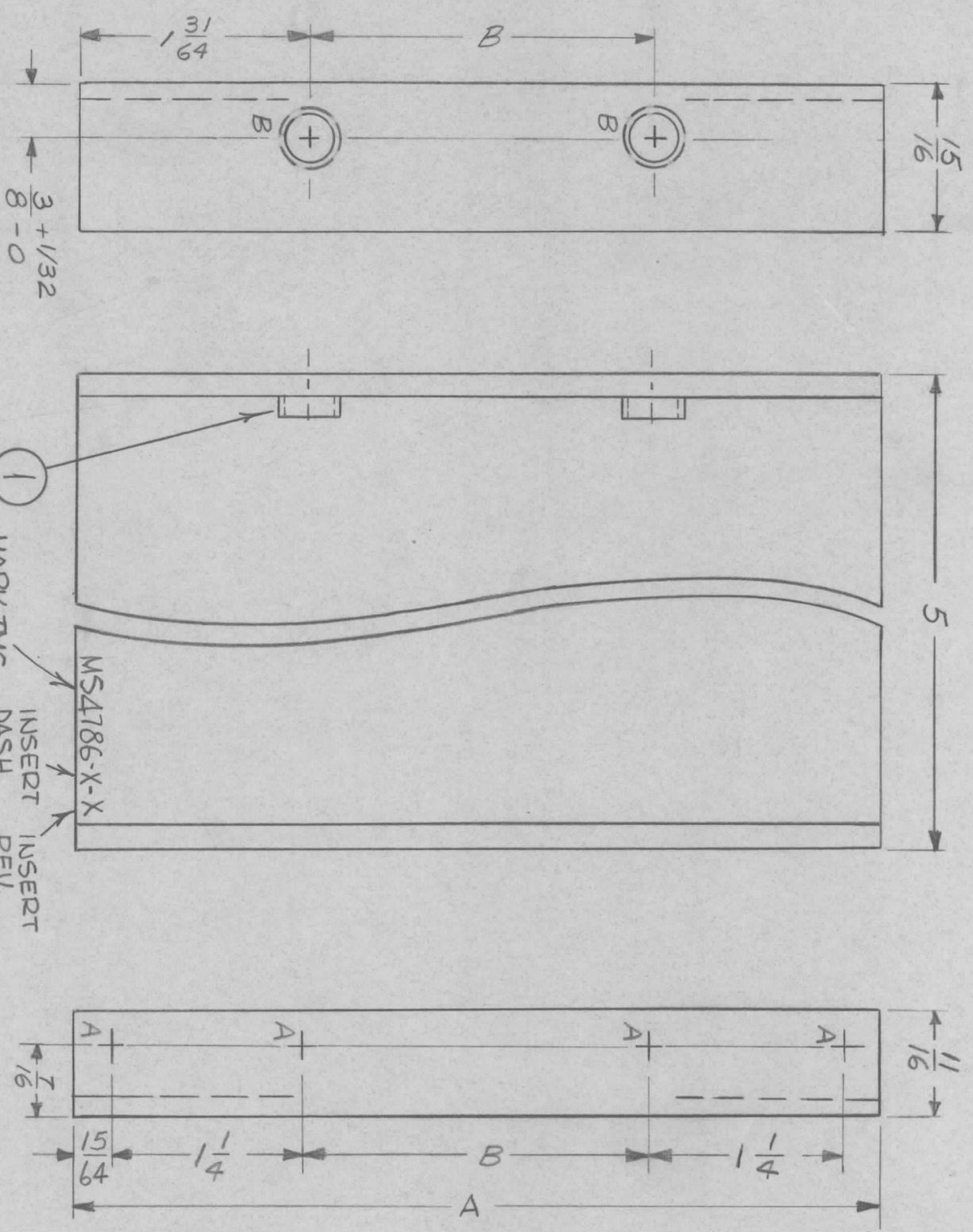
DRAWN	CHECKED	ELECT. DES.	MECH. DES.	DATE	FINAL APPROVAL	DATE
M. TAVILLO	MS	MS	MS	8-6-65	MS	1/14/66
				1-14-66		
				1-10-66		

HOLE	DESCRIPTION	REQ.
A	15/64 DIA.	4
B	.250-.253 DIA.	2

TMC PART NUMBER	A	B
MS4786-1	5 7/32	2 1/4
MS4786-2	8 23/32	5 3/4

MS4786

SYM	DESCRIPTION	DATE	E.M.N. NO.	DRAFT	CHKD	APPD
X1	IT. 1 WAS SM107-56, "A" HOLES WERE 13/64 DIA	11/4/65		JC		
Ø	ORIGINAL RELEASE FOR PRODUCTION	11/4/65		AVR		



MS4786-1 AS SHOWN
MS4786-2 OPPOSITE

NOTES

Q'TY./UNIT	2	KIT 272	MODEL USED ON	ASS'Y. NO.
SCALE	2	KIT 271		

RECD.	2	ITEM	1	PART NUMBER	NT129-1032-6	DESCRIPTION	NUT, PLN. SPLINE	SYMBOL
MATERIAL								
FINISH								

UNLESS OTHERWISE SPECIFIED, DIMENSIONS ARE IN INCHES AND INCLUDE CHEMICALLY APPLIED OR PLATED FINISHES

DECIMALS: .X ± .05, .XX ± .01, .XXX ± .005

FRACTIONS: ± 1/64 ANGLES, ± 0° 30'

TOLERANCES: ± 1/64 ANGLES, ± 0° 30'

SEE NOTES

LIST OF MATERIAL

THE TECHNICAL MATERIEL CORP.
MAMARONECK, NEW YORK

BRACKET, MTG, SIDE EXT.

UNLESS OTHERWISE SPECIFIED:

1. USE MATERIAL THICKNESS FOR MAXIMUM RADIUS ON ALL BENDS
2. ALL ANGULAR BENDS 90 DEGREES
3. REMOVE ALL BURRS AND SHARP EDGES
4. MOUNT INSERTS AFTER FINISHING

FINISH NOTES:

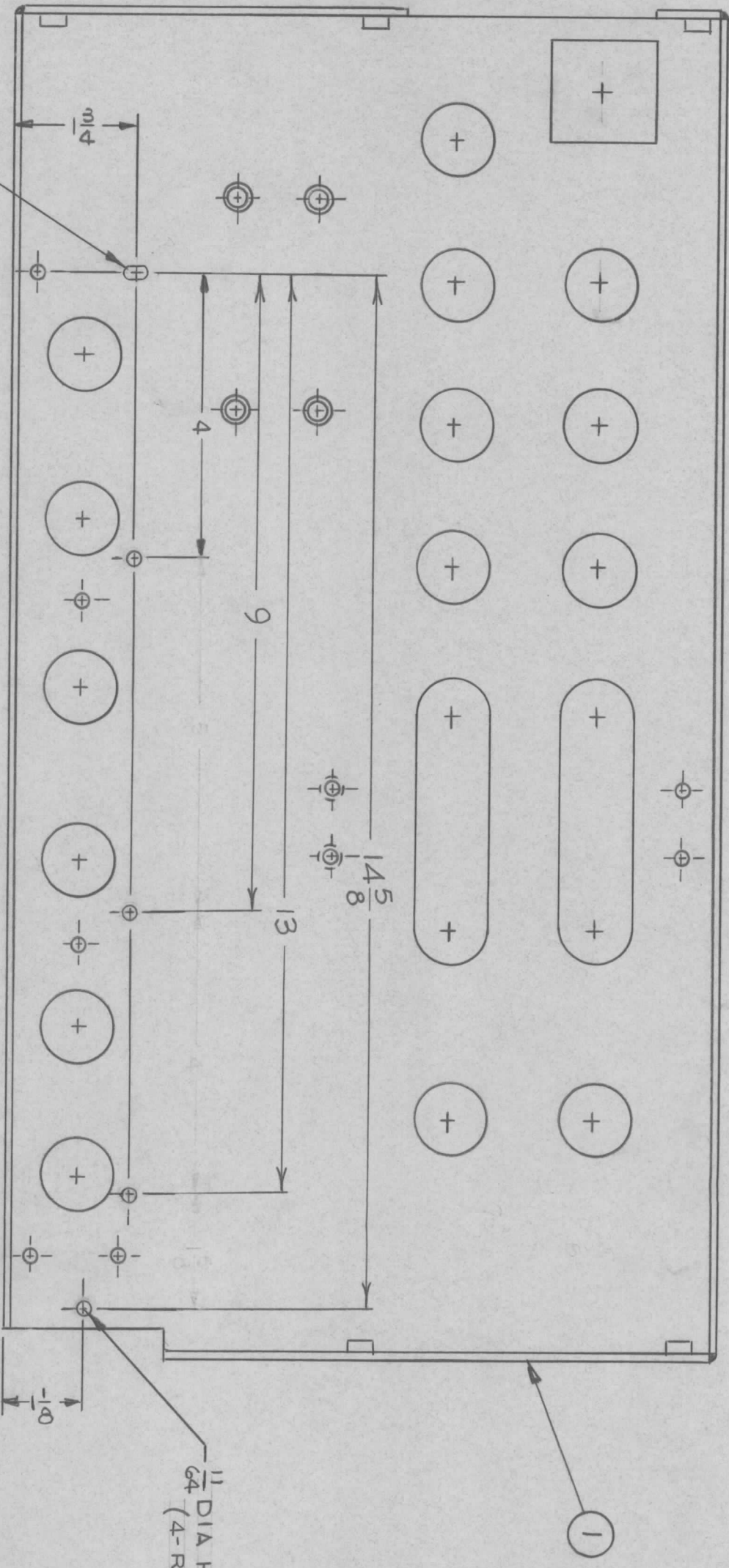
1. S404 - IRIDITE 14-2 AL-COAT.
2. S114 - ZINC CHROMATE PRIMER
3. S115 - SMOOTH GRAY ENAMEL

OR

PRIME AND PAINT PER CUSTOMER'S SPECIFICATIONS.

REVISIONS						
SYM	DESCRIPTION	DATE	E.M.N. NO.	DRAFT	CHKD	APPD
Ø	ORIGINAL RELEASE FOR PRODUCTION	2-4-66	M	JC		

MS 4790 Ø



11/64 X 19/64 SLOT

11/64 DIA HOLES (4-READ)

REQ'D.	ITEM	PART NUMBER	DESCRIPTION	SYMBOL
1	1	MS 3726	PLATE, SIDE-LEFT	

LIST OF MATERIAL			
MATERIAL	FINISH	TITLE	DESCRIPTION
	#	PLATE, SIDE-LEFT, MODIFIED	THE TECHNICAL MATERIEL CORP. MAMARONECK, NEW YORK

QTY./UNIT	1	MODEL USED ON	HFR-R1A	ASS'Y. NO.	KIT-239
SCALE	1/2				

UNLESS OTHERWISE SPECIFIED DIMENSIONS ARE IN INCHES AND INCLUDE CHEMICALLY APPLIED OR PLATED FINISHES

DECIMALS X ± .05
.XX ± .01
.XXX ± .005

TOLERANCES FRACTIONS ± 1/64 ANGLES ± 0° 30'

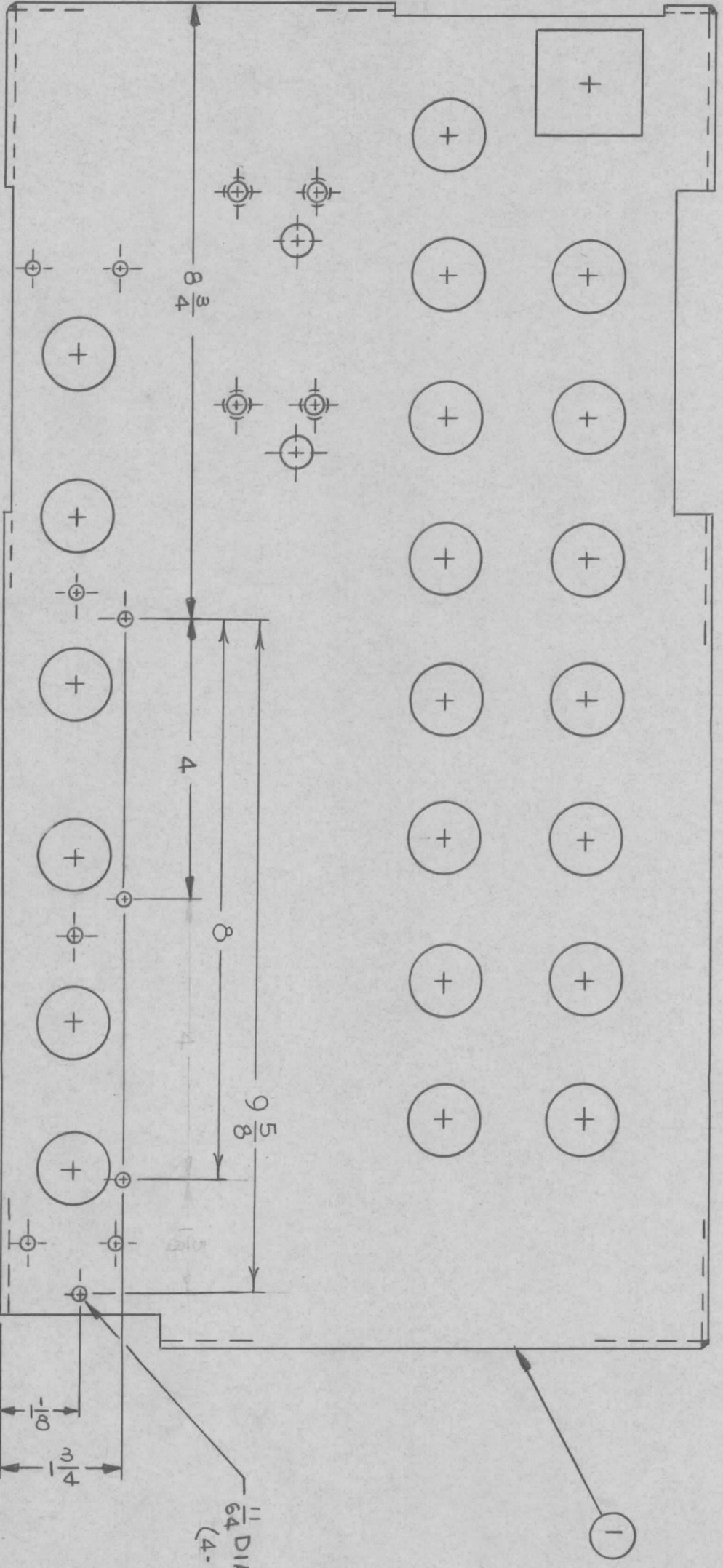
DRAWN	J.L.	DATE	12/13/65	FINAL APPROVAL	DATE
CHECKED	QCB	DATE	1-27-66		
ELECT. DES.	V. WALKER	DATE	1-27-66		
MECH. DES.		DATE			

NOTES

THE CONTENTS OF THIS DRAWING ARE THE EXCLUSIVE PROPERTY OF THE TECHNICAL MATERIEL CORP. ITS UNAUTHORIZED USE OR REPRODUCTION IN WHOLE OR IN PART IS STRICTLY FORBIDDEN.

REVISIONS						
SYM	DESCRIPTION	DATE	E.M.N. NO.	DRAFT	CHKD	APPD
Ø	ORIGINAL RELEASE FOR PRODUCTION	2-4-66	M	Jc		

MS4791 Ø



REQ'D.	ITEM	PART NUMBER	DESCRIPTION	SYMBOL
1	1	MS 3725	PLATE, SIDE-RIGHT	

LIST OF MATERIAL			
MATERIAL	TITLE	DATE	FINAL APPROVAL
	THE TECHNICAL MATERIEL CORP. MAMARONECK, NEW YORK		
	PLATE, SIDE-RIGHT, MODIFIED		

Q'TY./UNIT	1	MODEL USED ON	HFRR-1A	ASS'Y. NO.	KIT 239
SCALE	1/2				

NOTES

THE CONTENTS OF THIS DRAWING ARE THE EXCLUSIVE PROPERTY OF THE TECHNICAL MATERIEL CORP. ITS UNAUTHORIZED USE OR REPRODUCTION IN WHOLE OR IN PART IS STRICTLY FORBIDDEN.

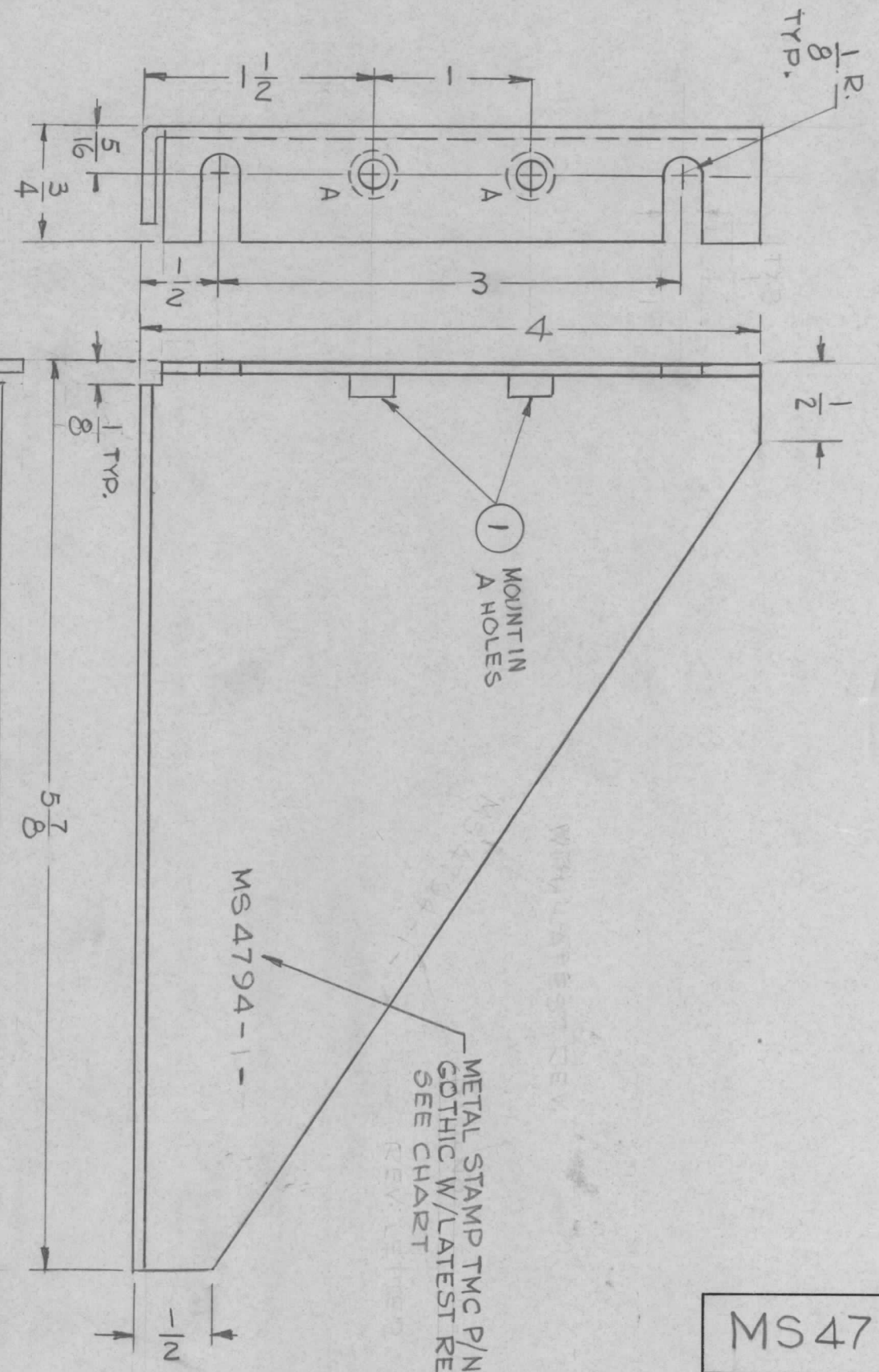
UNLESS OTHERWISE SPECIFIED DIMENSIONS ARE IN INCHES AND INCLUDE CHEMICALLY APPLIED OR PLATED FINISHES	
DECIMALS	FRACTIONS
X ± .05	± 1/64
.XX ± .01	ANGLES
.XXX ± .005	± 0° 30'

DRAWN	J.L.	DATE	12/14/65
CHECKED	Q/B	DATE	1-27-66
ELECT. DES.	V. SWAGER	DATE	1-27-66
MECH. DES.		DATE	

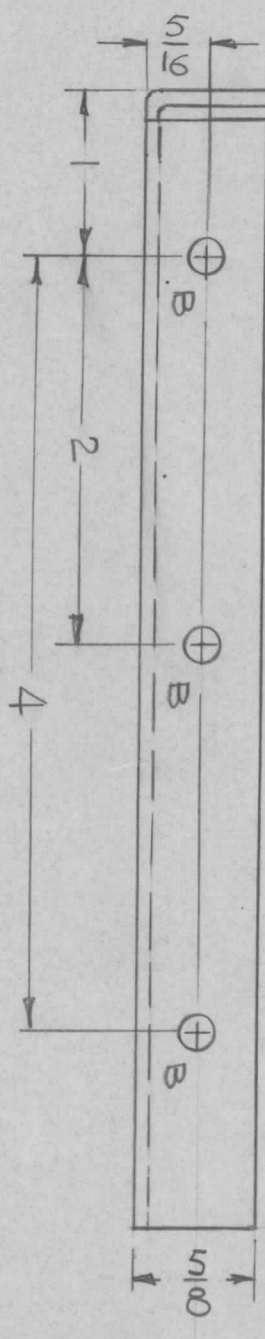
FINAL APPROVAL	DATE
<i>[Signature]</i>	2/1/66
MS 4791	Ø
SHEET	REV. LTR.

TMC PART NO	DESCRIPTION	REQ.
MS4794-1	PLATE, RIGHT SIDE AS SHOWN	1
MS4794-2	PLATE, LEFT SIDE OPPOSITE HAND	1

MS4794-1		REVISIONS				
SYM	DESCRIPTION	DATE	E.M.N. NO.	DRAFT	CHKD	APPD
Ø	ORIGINAL RELEASE FOR PRODUCTION	11/19/65	Ø	FAV		



HOLE	DESCRIPTION	REQ.
A	.191 - .194 DIA.	2
B	3/16 DIA.	3



REQ. D.	ITEM	PART NUMBER	DESCRIPTION	SYMBOL
2	1	NT129-632-4	NUT, PLAIN, SPLINE	A

LIST OF MATERIAL		THE TECHNICAL MATERIEL CORP.	
MATERIAL	FINISH	MAMARONECK, NEW YORK	
.081 THK. ALUMINUM 5052-H32	5404 YEL. IRIDITE	PLATE, RIGHT & LEFT SIDE	

UNLESS OTHERWISE SPECIFIED	DRAWN	DATE	FINAL APPROVAL	DATE
DIMENSIONS ARE IN INCHES AND INCLUDE CHEMICALLY APPLIED OR PLATED FINISHES	G.D.L.	11-8-65	[Signature]	11/19/65
UNLESS OTHERWISE SPECIFIED	CHECKED	DATE		
DIMENSIONS ARE IN INCHES AND INCLUDE CHEMICALLY APPLIED OR PLATED FINISHES	ELECT. DES.	DATE		
	MECH. DES.	DATE		

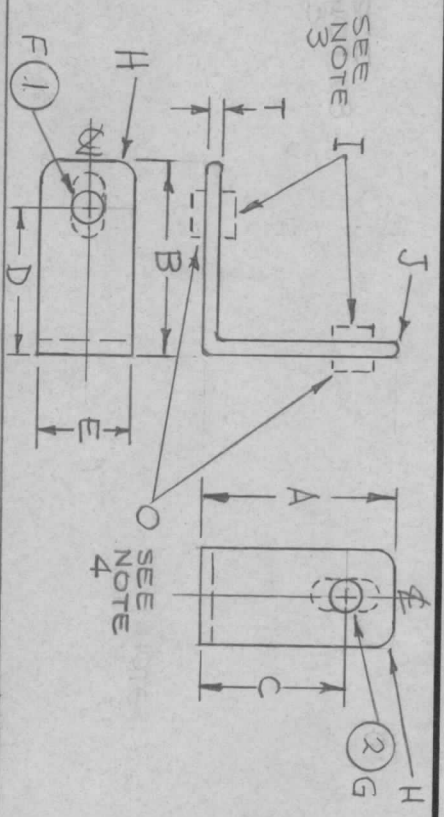
- UNLESS OTHERWISE SPECIFIED:
1. USE MATERIAL THICKNESS FOR MAXIMUM RADIUS ON ALL BENDS
 2. ALL ANGULAR BENDS 90 DEGREES
 3. REMOVE ALL BURRS AND SHARP EDGES
 4. MOUNT INSERTS AFTER FINISHING

Q'TY./UNIT	MODEL USED ON	ASSY. NO.
1	TP8C-1	A5314

SCALE 1:1

THE CONTENTS OF THIS DRAWING ARE THE EXCLUSIVE PROPERTY OF THE TECHNICAL MATERIEL CORP. ITS UNAUTHORIZED USE OR REPRODUCTION IN WHOLE OR IN PART IS STRICTLY FORBIDDEN.

NOTES



TMC PART NUMBER	DIMENSIONS (SEE NOTE 1)					HOLE OR SLOT (SEE NOTE 2)	RADIUS CORNER H	RADIUS EDGES J	MATERIAL			FINISH	ITEM 1 "F" HOLE	ITEM 2 "G" HOLE	
	A	B	C	D	E				F	G	T				MAT'L
MS4978-1	3/4	1-1/8	3/8	7/8	3/4	.250-.253	15/64	1/16	.081	ALUM	5052-H32	S404 YELLOW IRIDITE	NT1291032-4	1	1

MS4798

REVISIONS						
SYM	DESCRIPTION	DATE	E.M.N. NO.	DRAFT	CHKD	APPD
X1	REDRAWN FROM 1 SIZE	12-30-64				
Ø	ORIGINAL RELEASE FOR PRODUCTION	3-31-67		R.G.		

NOTE

FOR HOLE OR SLOT COMBINATIONS ONLY USE MS2665.

- NOTES:
- WHEN ADDING AN ITEM TO DRAWING, AND THE "A" AND "B" DIMENSIONS ARE DIFFERENT, "A" SHOULD BE SHOWN AS THE SMALLER DIMENSION, AND THE "B" AS THE LARGER.
 - IF "F" & "G" HOLES ARE SLOTS, THE LONGER DIMENSION OF THE SLOT WILL RUN PARALLEL WITH THE CENTER LINE OF THE BRACKET. (SHOWN DOTTED)
 - LETTER "I" PRECEDING EITHER ITEM 1 OR ITEM 2 DENOTES MTG. INSIDE BEND OF BRACKET
 - LETTER "Ø" PRECEDING EITHER ITEM 1 OR ITEM 2 DENOTES MTG. OUTSIDE BEND OF BRKT

REQ'D.	ITEM	SEE CHART	PART NUMBER	DESCRIPTION	SYMBOL
2	1	SEE CHART		NUT, PLN, SPLINE	
1		SEE CHART		NUT, PLN, SPLINE	

LIST OF MATERIAL			
MATERIAL	TITLE	DATE	FINAL APPROVAL
	BRACKET	12-30-64	[Signature]
	THE TECHNICAL MATERIEL CORP.		
	MAMARONECK, NEW YORK		

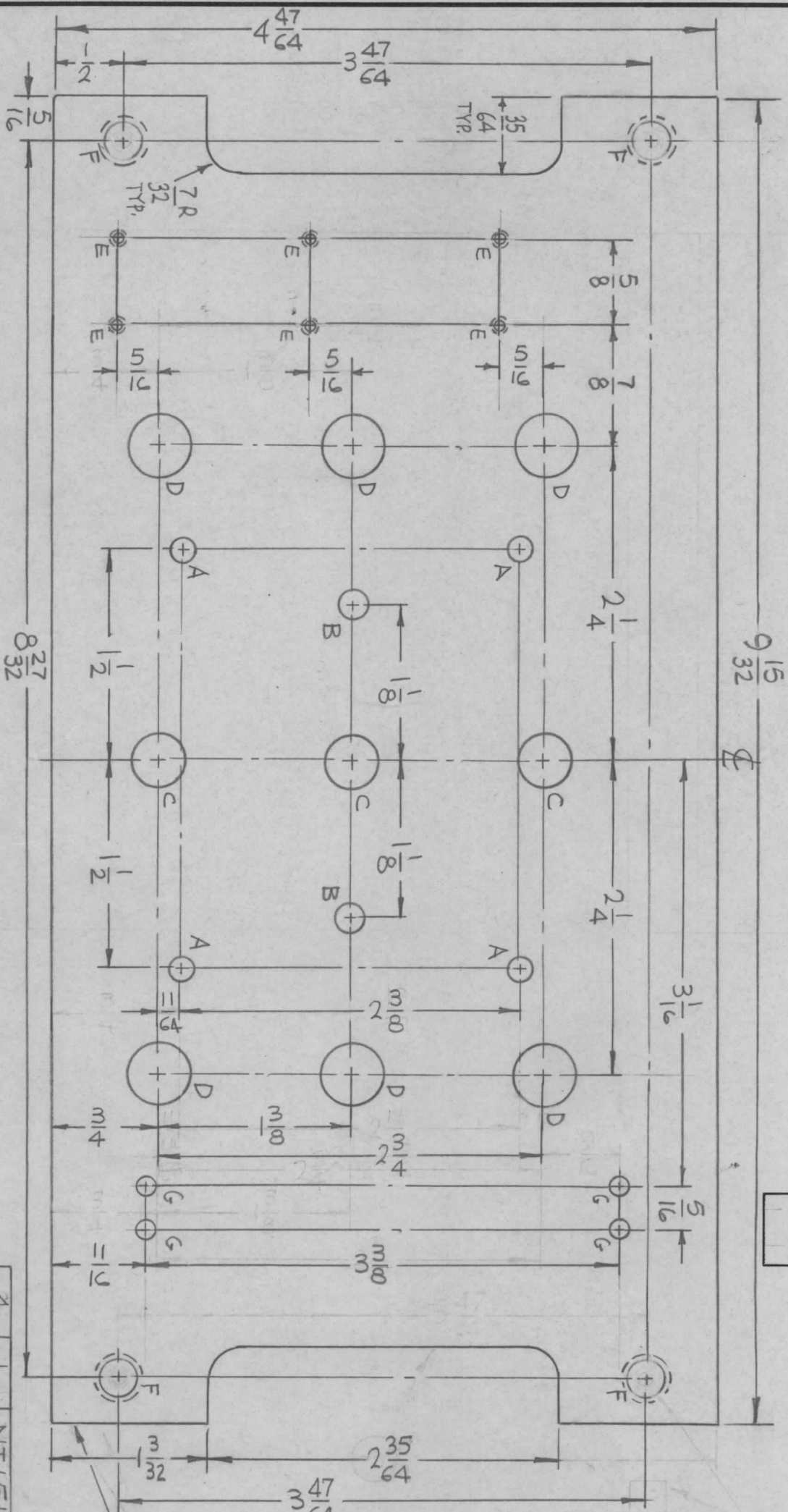
QTY./UNIT	2	MODEL USED ON	CMRA-1	ASSY. NO.	
SCALE		CODE	A	STANDARD	

UNLESS OTHERWISE SPECIFIED DIMENSIONS ARE IN INCHES AND INCLUDE CHEMICALLY APPLIED OR PLATED FINISHES			
DECIMALS	TOLERANCES	FRACTIONS	ANGLES
.X ± .05		± 1/64	
.XX ± .01		± .005	
.XXX ± .005		± 0° 30'	

NOTES

MACHINING:

1. MILL ALL EDGES.
2. HOLES MUST BE DRILLED, UNLESS OTHERWISE SPECIFIED.
3. LATERAL BOW OF PANEL MUST BE KEPT TO .031 TOLERANCE.
4. PANEL MUST BE FREE OF ALL MACHINING MARKS, GOUGES AND SCRATCHES. IF NECESSARY, SAND FRONT OF PANEL WITH NO. 120 GRIT SANDPAPER.



MS4799

SYM	DESCRIPTION	DATE	E.M.N. NO.	DRAFT	CHKD	APPD
X1	E HOLES ADDED	11-8-65	X 1			
X2	15/32 HOLE WAS 7/16, DIM'S ADDED	11-11-65	X 2			
X3	4 G HOLES ADDED	12-7-65	X 3			
X4	ITEM 1 WAS NT151, 2-3/8 DIM WAS 2-13/32	4-11-66	X 4			
Ø	ORIGINAL RELEASE FOR PRODUCTION	4-12-66	Ø			

HOLES	DESCRIPTION	REQ.
A	11/64 DIA.	4
B	13/64 DIA.	2
C	3/8 DIA.	3
D	15/32 DIA.	3
E	DRILL TAP 2-5C	3
F	DR. 250 DIA. C' BORE, 337 DIA. X 1/32 DR. FROM REAR	4
G	9/64 DIA.	4

MARK TMC PART NO. (MS4799) HIGH GOTHIC W/LATEST 8 REV. LETTER (ON REAR)

REF: LD2014.

FRONT VIEW

FINISH NOTES:

1. S404 - IRIDITE 14-2 AL-COAT
 2. S114 - ZINC CHROMATE PRIMER
 3. S115 - SMOOTH GRAY ENAMEL
- PRIME AND PAINT PER CUSTOMER'S SPECIFICATIONS

FRONT AND EDGES ONLY

NOTES

QTY./UNIT	2	MODEL USED ON	LRCM-1	ASSY. NO.	AX614
SCALE	1:1	CODE	A		

THE CONTENTS OF THIS DRAWING ARE THE EXCLUSIVE PROPERTY OF THE TECHNICAL MATERIEL CORP. ITS UNAUTHORIZED USE OR REPRODUCTION IN WHOLE OR IN PART IS STRICTLY FORBIDDEN.

REV'D.	ITEM	PART NUMBER	DESCRIPTION	SYMBOL
4	1	NT151-1	NUT, PLAIN, CLINCH	F

REV'D.	ITEM	PART NUMBER	DESCRIPTION	SYMBOL
		F. BUDETTI		
		MATERIAL	125 THICK ALUMINUM	
			2024-T3	
		FINISH	SEE NOTES	

PANEL, FRONT

THE TECHNICAL MATERIEL CORP.

MAMARONECK, NEW YORK

UNLESS OTHERWISE SPECIFIED DIMENSIONS ARE IN INCHES AND INCLUDE CHEMICALLY APPLIED OR PLATED FINISHES	TOLERANCES	DECIMALS	FRACTIONS
		.X ± .05	± 1/64
		.XX ± .01	ANGLES
		.XXX ± .005	± 0° 30'

DRAWN	CHECKED	ELECT. DES.	MECH. DES.	DATE	DATE	DATE	DATE
				11-6-65	4-11-66		

FINAL APPROVAL	DATE	SHEET	REV. LTR.
		MS 4799	