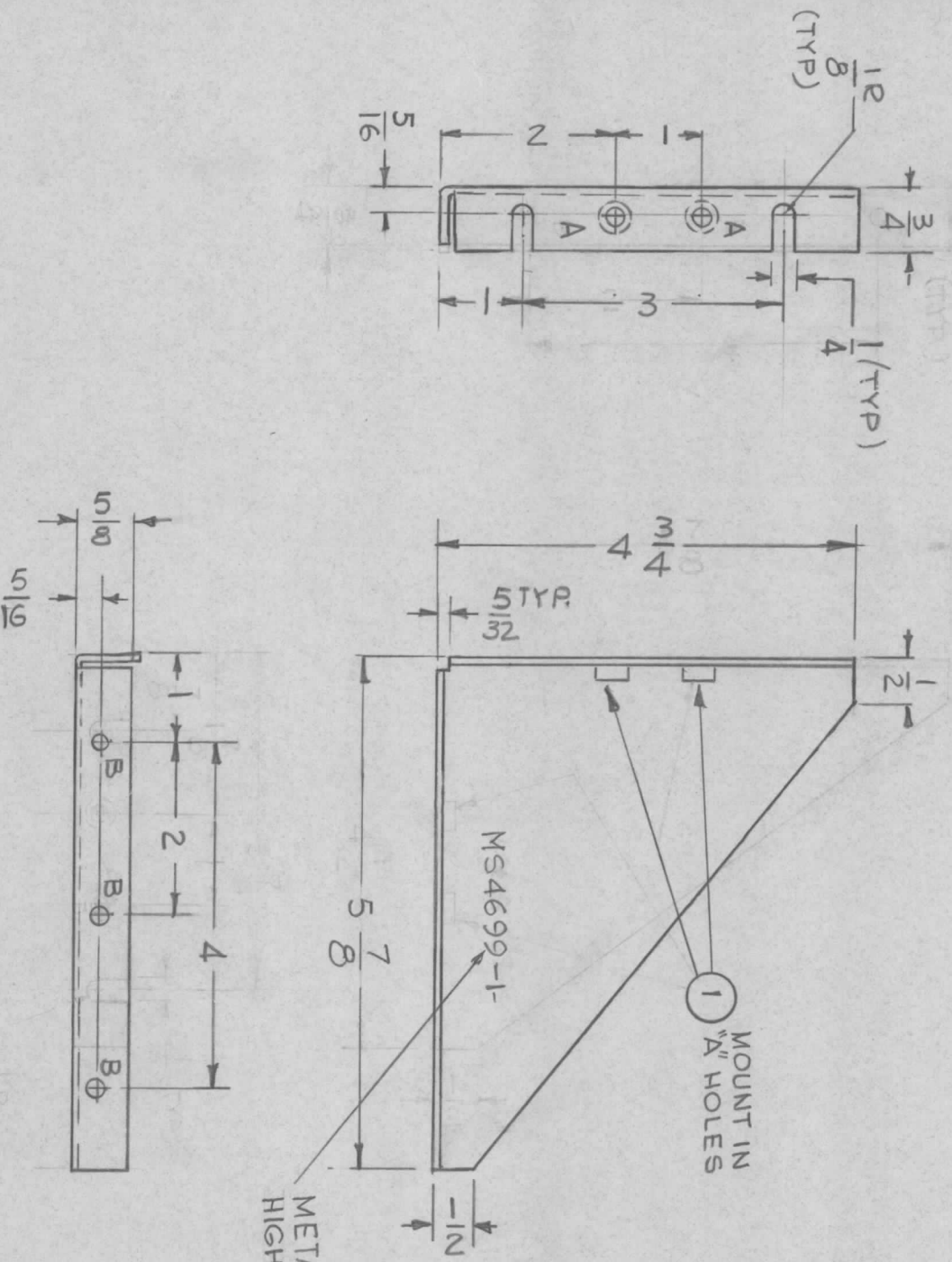


HOLE	DESCRIPTION	REQ
A	.191 - .194 DIA	2
B	3/16 DIA	3



METAL STAMP TMC PART NO. 1/8
HIGH GOTHIC W/LATEST REV. LETTER

MS 4699-1 RIGHT SIDE PLATE (AS SHOWN)
MS 4699-2 LEFT SIDE PLATE (OPP. HAND)

MS 4699 - ϕ

REVISIONS		DATE	E.M.N. NO.	DRAFT	CHKD	APPD
X1	REDRAWN & REVISED	9-22-65	X1	G.D.L.		
ϕ	ORIGINAL RELEASE FOR PRODUCTION	9/25/69		G		

REC'D.	ITEM	PART NUMBER	DESCRIPTION	SYMBOL
2	1	NT 129-632-4	NUT, PLAIN, SPLINE	A

LIST OF MATERIAL

MATERIAL	TITLE
.081 THK ALUMINUM 5052-H32	THE TECHNICAL MATERIEL CORP. MAMARONECK, NEW YORK
FINISH 5404 YEL. IRIDITE	PLATE, SIDE, LEFT & RIGHT

UNLESS OTHERWISE SPECIFIED DIMENSIONS ARE IN INCHES AND INCLUDE CHEMICALLY APPLIED OR PLATED FINISHES	DRAWN G.D.L.	DATE 9-22-65	FINAL APPROVAL <i>[Signature]</i>	DATE 9/25/69
DECIMALS .X \pm .05 .XX \pm .01 .XXX \pm .005	ELECT. DES. MECH. DES.	DATE	DATE	DATE
TOLERANCES FRACTIONS \pm 1/64 ANGLES \pm 0° 30'				
			MS 4699 -	ϕ
			SHEET	REV. LTR.

- UNLESS OTHERWISE SPECIFIED:
1. USE MATERIAL THICKNESS FOR MAXIMUM RADIUS ON ALL BENDS
 2. ALL ANGULAR BENDS 90 DEGREES
 3. REMOVE ALL BURRS AND SHARP EDGES
 4. MOUNT INSERTS AFTER FINISHING

NOTES

THE CONTENTS OF THIS DRAWING ARE THE EXCLUSIVE PROPERTY OF THE TECHNICAL MATERIEL CORP. ITS UNAUTHORIZED USE OR REPRODUCTION IN WHOLE OR IN PART IS STRICTLY FORBIDDEN.

QTY./UNIT	MODEL USED ON	ASSY. NO.
1	TPSG-1	

SCALE 1:2