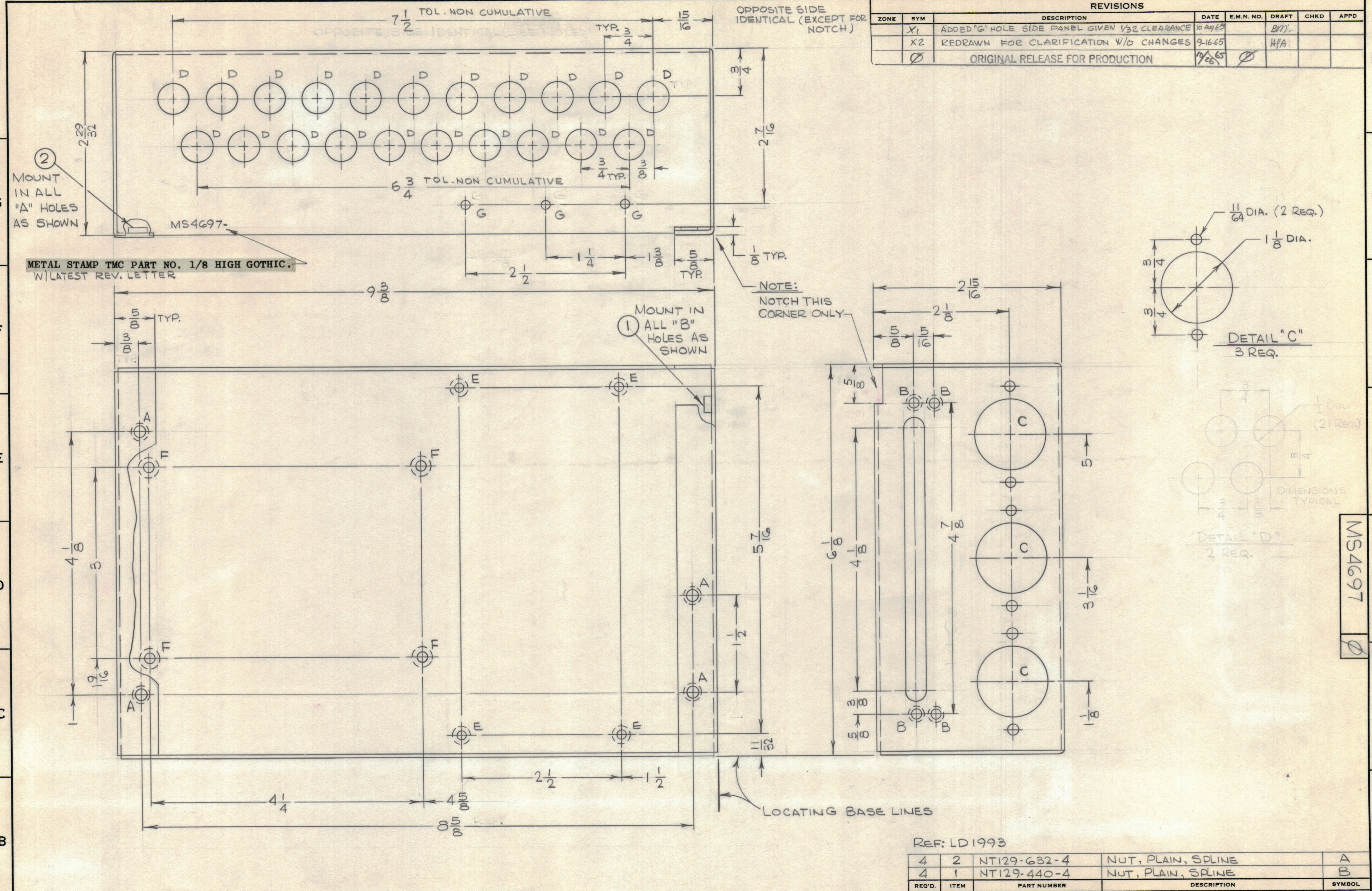


REVISIONS							
ZONE	SYM	DESCRIPTION	DATE	E.M.N. NO.	DRAFT	CHKD	APPD
	X1	ADDED 1/16" HOLE SIDE PANEL GIVEN 1/32 CLEARANCE	10 Aug 65		B/M		
	X2	REDRAWN FOR CLARIFICATION W/O CHANGES	9-16-65		H/A		
		ORIGINAL RELEASE FOR PRODUCTION	10/26/65				

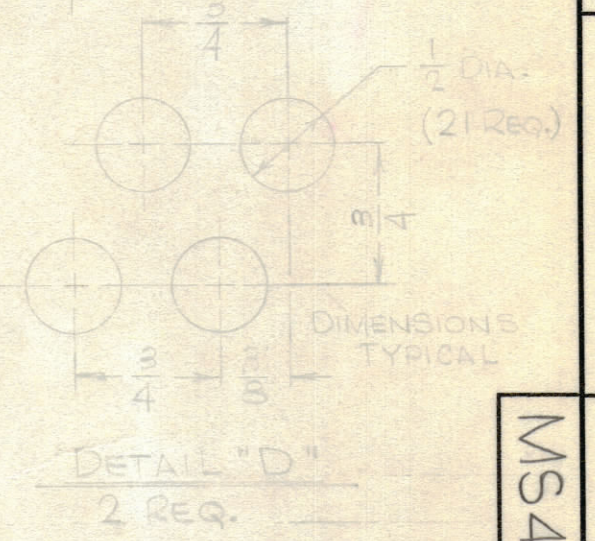
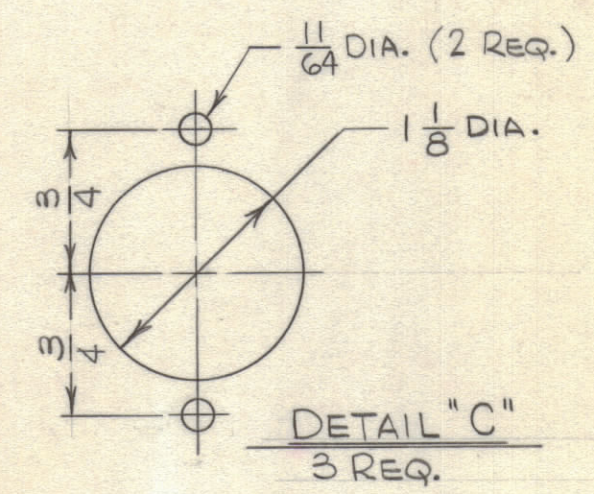


METAL STAMP TMC PART NO. 1/8 HIGH GOTHIC.  
W/LATEST REV. LETTER

2  
MOUNT  
IN ALL  
"A" HOLES  
AS SHOWN

1  
MOUNT IN  
ALL "B"  
HOLES AS  
SHOWN

NOTE:  
NOTCH THIS  
CORNER ONLY



HOLE	DESCRIPTION	REQ.
A	.191-.194 DIA.	4
B	.161-.164 DIA.	4
C	SEE DETAIL	3
D	1/2 DIA.	42
E	.144 DIA.-C'SK 82° TO .284 D.	4
F	.169 DIA.-C'SK 82° TO .337 D.	4
G	9/64 DIA.	6

- UNLESS OTHERWISE SPECIFIED:
1. USE MATERIAL THICKNESS FOR MAXIMUM RADIUS ON ALL BENDS
  2. ALL ANGULAR BENDS 90 DEGREES
  3. REMOVE ALL BURRS AND SHARP EDGES
  4. MOUNT INSERTS AFTER FINISHING

NOTES

Q'TY./UNIT	MODEL USED ON	ASS'Y. NO.
1	RASB-1	A5129
1	RARB-1	A5129

SCALE 1:1

THE CONTENTS OF THIS DRAWING ARE THE EXCLUSIVE PROPERTY OF THE TECHNICAL MATERIEL CORP. ITS UNAUTHORIZED USE OR REPRODUCTION IN WHOLE OR IN PART IS STRICTLY FORBIDDEN.

REF: LD 1993

REQ'D.	ITEM	PART NUMBER	DESCRIPTION	SYMBOL
4	2	NT129-632-4	NUT, PLAIN, SPLINE	A
4	1	NT129-440-4	NUT, PLAIN, SPLINE	B

LANGER		LIST OF MATERIAL	
MATERIAL	.064 ALUMINUM 5052-H32	THE TECHNICAL MATERIEL CORP. MAMARONECK, NEW YORK	
FINISH	5404 - YELLOW IRIDITE	TITLE CHASSIS, POWER SUPPLY	
UNLESS OTHERWISE SPECIFIED DIMENSIONS ARE IN INCHES AND INCLUDE CHEMICALLY APPLIED OR PLATED FINISHES		DRAWN H. AUSTIN	DATE 9-15-65
TOLERANCES		CHECKED JCB	DATE 9/29/65
DECIMALS .X ± .05 .XX ± .01 .XXX ± .005	FRACTIONS ± 1/64 ANGLES ± 0° 30'	ELECT. DES.	DATE
		MECH. DES.	DATE
		FINAL APPROVAL M. H. HAY	
		DATE 10/24/65	
		SHEET MS4697	
		REV. LTR.	