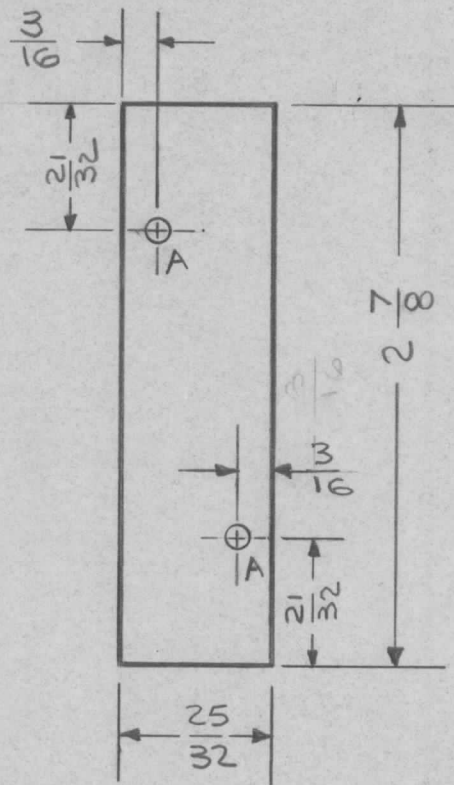


REQ. PER UNIT	USED ON			MS4676 $\emptyset$
	MODEL	ASS'Y. NO.	DATE	
	RTRS-2		7-8-65	



HOLE DIMEN  
A -  $\frac{1}{8}$  DIA. 2 REQ.

REQ.	ITEM	PART NO.	DESCRIPTION				SYMBOL					
		040 OR .050	THE TECHNICAL MATERIEL CORP.									
		STOCK SIZE	MAMARONECK. NEW YORK									
$\emptyset$	ORIGINAL RELEASE	1/8/65	$\emptyset$	D.S.	ALUMINUM		COVER, RELAY CUTOUT					
SYM	DESCRIPTION	DATE	CH. NO.	DRAFTS	CHECKER	ENG. APP.	MATERIAL					
UNLESS OTHERWISE SPECIFIED DIMENSIONS ARE IN INCHES AND INCLUDE CHEMICALLY APPLIED OR PLATED FINISHES		SCALE		FULL				5052 H32				
DECIMALS .X $\pm$ .05 .XX $\pm$ .01 .XXX $\pm$ .005		FRACTIONS $\pm$ 1/64 ANGLES $\pm$ 0° 30'		TOLERANCES		CODE	1	TYPE & TEMPER	HEAT TREAT. SPEC.	DRAWN	CHECKED	FINAL APPROVAL
								S404 YELLOW IRIDITE		W. Jordan 7/8/65	MS4676 $\emptyset$	
								FINISH & SPEC. NO.	ELEC. DES. APP.	MECH. DES. APP.		