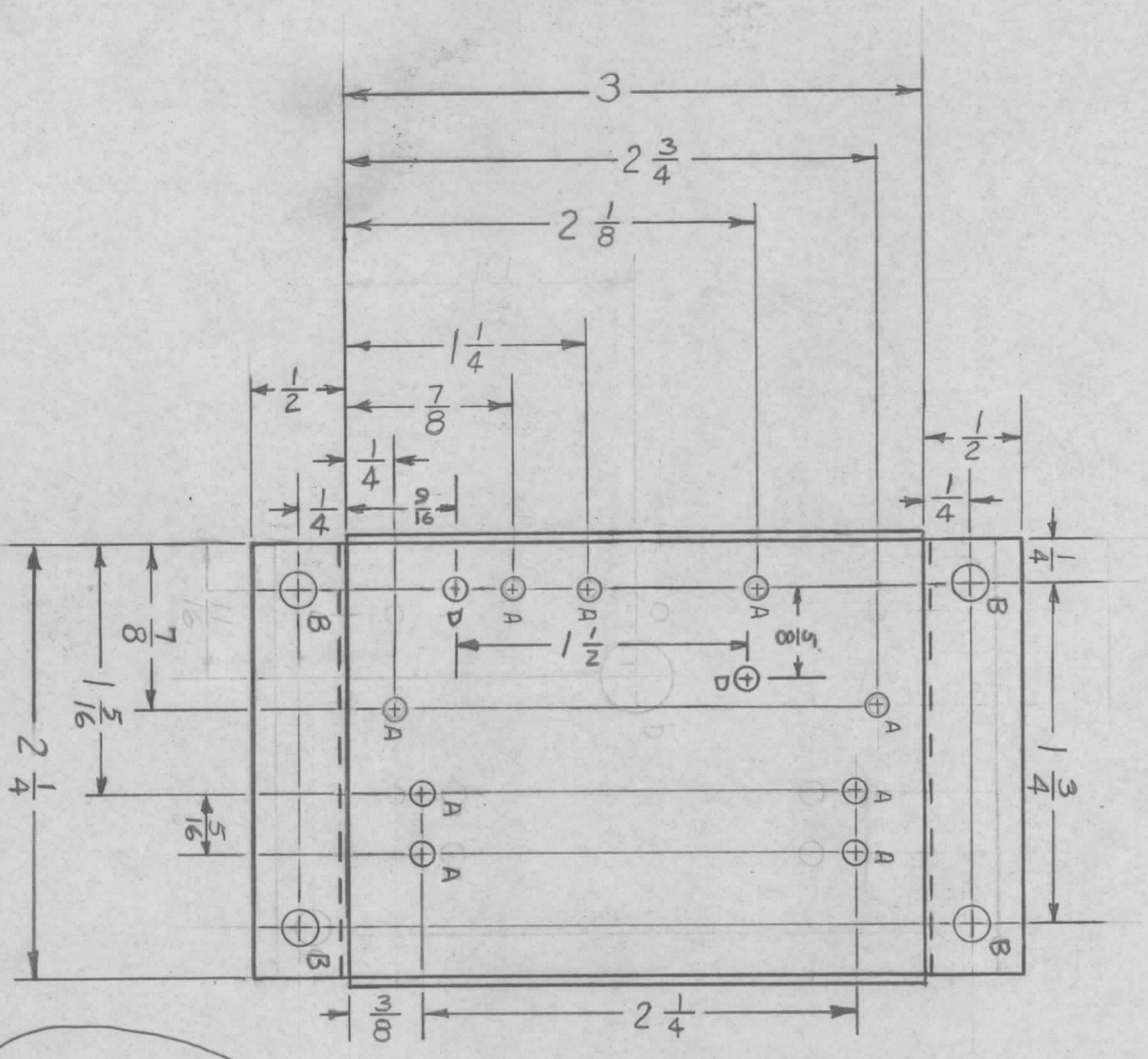


- UNLESS OTHERWISE SPECIFIED:
1. USE MATERIAL THICKNESS FOR MAXIMUM RADIUS ON ALL BENDS
 2. ALL ANGULAR BENDS 90 DEGREES
 3. REMOVE ALL BURRS AND SHARP EDGES
 4. MOUNT INSERTS AFTER FINISHING

NOTES



METAL STAMP TMC
PT. NO. 1/8 HIGH
GOTHIC, W/LATEST
REVISION LETTER

M54673 Ø

HOLE DIA.	REQ'D
A .1/8	9
B .191-.194	4
C .1/2	1
D 11/64	2

SYM	DESCRIPTION	DATE	E.M.N. NO.	DRAFT	CHKD	APPD
X1	UNLESS OTHERWISE SPECIFIED NOTES 1-2 ADDED	7-2-65		JC		
X2	"C" HOLE WAS .975 DIA	7-6-65		JC		
X3	"D" HOLES ADDED (2 REQUIRED) ORIGINAL RELEASE FOR PRODUCTION	7-22-65		MS		
		9/12/65		H.V.		

REVISIONS

NOTE: MOUNT ITEM ① IN ALL BUNDLES AS SHOWN AFTER FINISHING

REQ'D.	ITEM	PART NUMBER	DESCRIPTION	SYMBOL
4	1	NT129-632-4	NUT, SWAGE TYPE	

LIST OF MATERIAL

MATERIAL	TITLE
.064 ALUM. 5052-H32	THE TECHNICAL MATERIEL CORP. MAMARONECK, NEW YORK
FINISH S404 YEL. IRI DITE	CHASSIS, COMPONENT MTG.

QTY./UNIT	MODEL USED ON	ASSY. NO.
1:1	DDRR-506	

UNLESS OTHERWISE SPECIFIED DIMENSIONS ARE IN INCHES AND INCLUDE CHEMICALLY APPLIED OR PLATED FINISHES

DESCRIPTORS

TOLERANCES

FRACTIONS

DRAWN: *R. Ruppel* DATE: 7-2-65

CHECKED: *gys* DATE: 8-5-65

ELECT. DES. DATE: 8-8-65

MECH. DES. DATE: 8-8-65

FINAL APPROVAL: *[Signature]* DATE: 9/1/65

SHEET: MS4673

THE CONTENTS OF THIS DRAWING ARE THE EXCLUSIVE PROPERTY OF THE TECHNICAL MATERIEL CORP. ITS UNAUTHORIZED USE OR REPRODUCTION IN WHOLE OR IN PART IS STRICTLY FORBIDDEN.