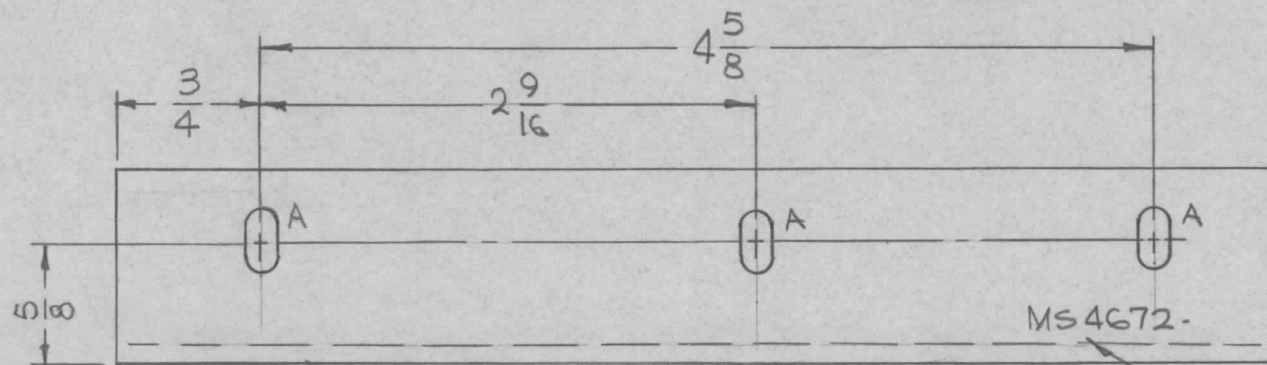
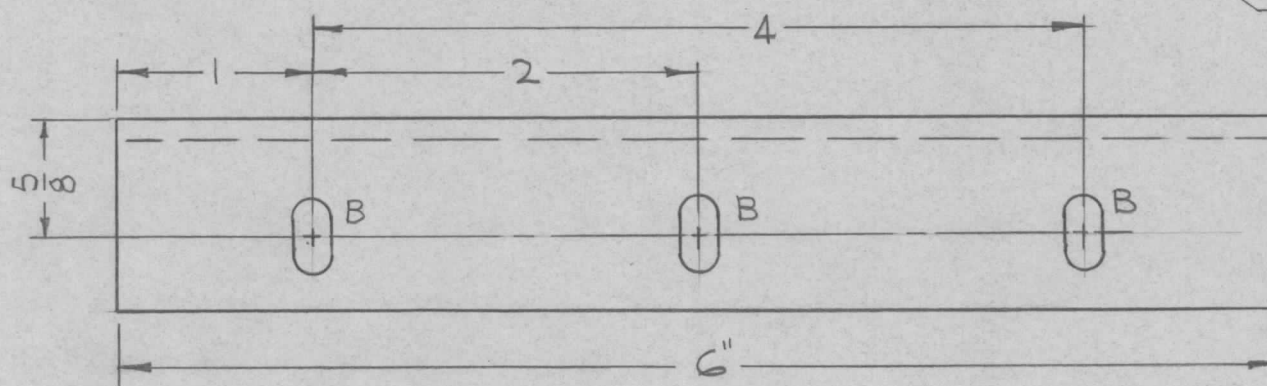


REQ. PER UNIT	USED ON		
	MODEL	ASS'Y. NO.	DATE
1	TST-10K		7-1-65

MS4672 \emptyset



SLOTS:
 A- 5/32 X 5/16 (3REQ.)
 B- 3/16 X 3/8 (3REQ.)



MARK TMC PART NO.
 1/8 HIGH GOTHIC W/LATEST
 REV. LETTER.

SYM	DESCRIPTION	DATE	CH. NO.	DRAFTS	CHECKER	ENG. APP.	REQ. ITEM	PART NO.	F. BUDETTI DESCRIPTION	SYMBOL	
							1 X 1 X 1/8 THICK $\&$		THE TECHNICAL MATERIEL CORP. MAMARONECK, NEW YORK		
							STOCK SIZE				
\emptyset	ORIGINAL RELEASE	2/15/66				JHQ	EXTRUDED ALUMINUM		BRACKET, MTG FIXED FILTER		
							MATERIAL				
	UNLESS OTHERWISE SPECIFIED DIMENSIONS ARE IN INCHES AND INCLUDE CHEMICALLY APPLIED OR PLATED FINISHES	SCALE	1:1				5052-H32		 		
							TYPE & TEMPER	HEAT TREAT. SPEC.	DRAWN	CHECKED	FINAL APPROVAL
	DECIMALS .X \pm .05 .XX \pm .01 .XXX \pm .005	FRACTIONS \pm 1/64 ANGLES \pm 0° 30'	CODE A				5404 YEL. IRIDITE				MS4672 \emptyset
							FINISH & SPEC. NO.		ELEC. DES. APP.	MECH. DES. APP.	