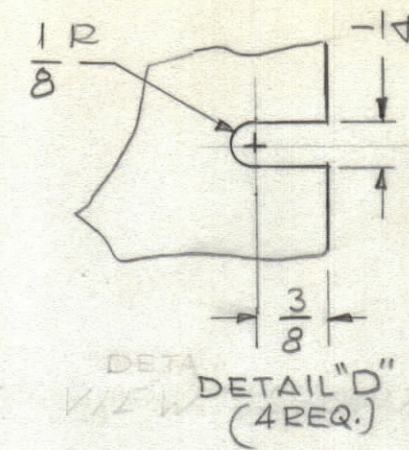
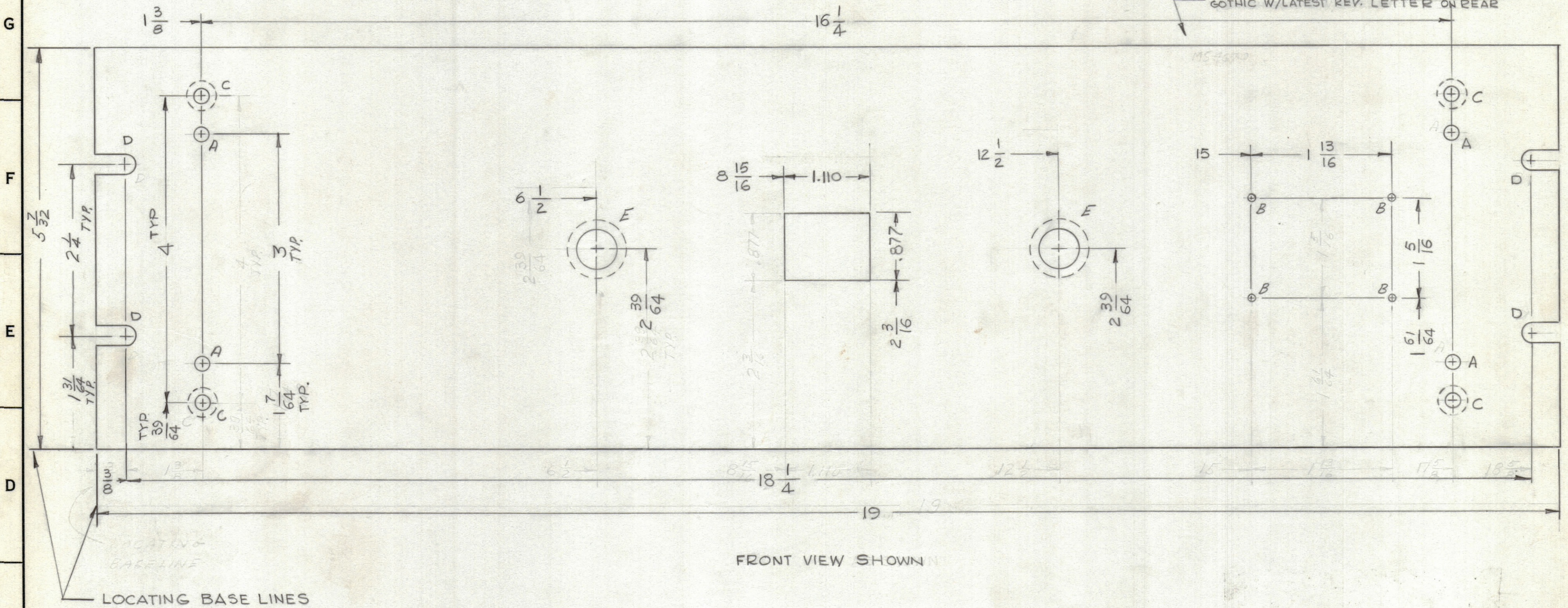


HOLE	DESCRIPTION	REQ.
A	1/64 DIA.	4
B	.078 DIA.	4
C	.196 DIA. & CSK 82° TO .390 DIA. ON REAR	4
D	SEE DETAIL	4
E	1/2 DIA THRU, C/BORE 3/4 DIA X 3/32 DEEP ON REAR	2

REVISIONS						
ZONE	SYM	DESCRIPTION	DATE	E.M.N. NO.	DRAFT	CHKD
	XI	PICTORIAL CLARIFIED	9-10-65	XI	G.D.L.	
	Ø	ORIGINAL RELEASE FOR PRODUCTION	10/26/65			



METAL STAMP TMC PT/NO 1/8 HIGH  
GOTHIC W/LATEST REV. LETTER ON REAR



LOCATING BASE LINES

FRONT VIEW SHOWN

A - 1/64 4 REQ.  
B - .078 4 REQ.  
C - .196 DIA. CSK 82° TO .390 ON REAR 4 REQ.

**MACHINING:**

- MILL ALL EDGES.
- HOLES MUST BE DRILLED, UNLESS OTHERWISE SPECIFIED.
- LATERAL BOW OF PANEL MUST BE KEPT TO .031 TOLERANCE.
- PANEL MUST BE FREE OF ALL MACHINING MARKS, GOUGES AND SCRATCHES. IF NECESSARY, SAND FRONT OF PANEL WITH NO. 120 GRIT SANDPAPER.

**FINISH NOTES:**

- S404 - IRIDITE 14-2 AL-COAT.
- S114 - ZINC CHROMATE PRIMER } FRONT AND
- S115 - SMOOTH GRAY ENAMEL } EDGES ONLY

REF: LD1958

REQ'D.	ITEM	PART NUMBER	DESCRIPTION	SYMBOL
<b>LANGER LIST OF MATERIAL</b>				
MATERIAL		3/16 THK ALUMINUM 2024-T3		
FINISH		SEE NOTES		
TITLE		PANEL, FRONT		
UNLESS OTHERWISE SPECIFIED DIMENSIONS ARE IN INCHES AND INCLUDE CHEMICALLY APPLIED OR PLATED FINISHES		DRAWN: [Signature] DATE: 1/26/65		
DECIMALS: .X ± .05 .XX ± .01 .XXX ± .005		CHECKED: [Signature] DATE: 9/29/65		
FRACTIONS: ± 1/64 ANGLES: ± 0° 30'		ELECT. DES. DATE: MS4670		
TOLERANCES		MECH. DES. DATE: [Signature]		
THE CONTENTS OF THIS DRAWING ARE THE EXCLUSIVE PROPERTY OF THE TECHNICAL MATERIEL CORP. ITS UNAUTHORIZED USE OR REPRODUCTION IN WHOLE OR IN PART IS STRICTLY FORBIDDEN.		SHEET: [Signature]		

NOTES

MS4670