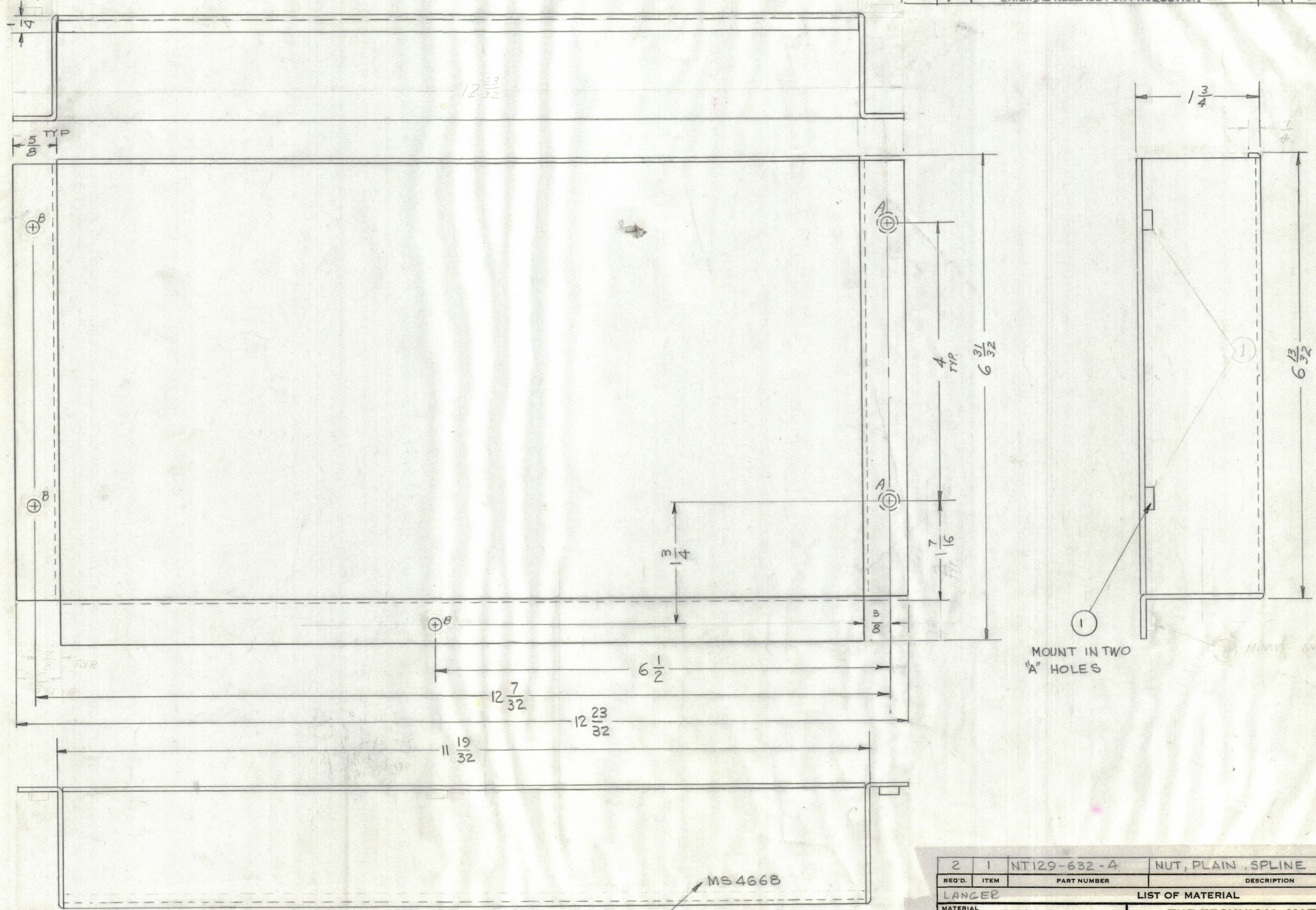


HOLE	DESCRIPTION	REQ
A	.191 - .194 DIA	2
B	11/64 DIA	3

REVISIONS						
ZONE	SYM	DESCRIPTION	DATE	E.M.N. NO.	DRAFT	CHKD
	X1	Added 1/8" hole	9 Aug 65		Bm	
	X2	CENTER line of C, D, E HOLES WAS 23/32. Add F HOLE	9 Aug 65		Bm	
	X3	REDRAWN & CLARIFIED	9-14-65	X3	G.D.L.	
	Ø	ORIGINAL RELEASE FOR PRODUCTION	10/26/65	Ø		10



MOUNT IN TWO 'A' HOLES

MOUNT IN ONE 'A' HOLE

METAL STAMP TMC P/No 1/8 HIGH GOTHIC WITH LATEST REV. LETTER.

- UNLESS OTHERWISE SPECIFIED:
1. USE MATERIAL THICKNESS FOR MAXIMUM RADIUS ON ALL BENDS
  2. ALL ANGULAR BENDS 90 DEGREES
  3. REMOVE ALL BURRS AND SHARP EDGES
  4. MOUNT INSERTS AFTER FINISHING

NOTES

Q'TY./UNIT	MODEL USED ON	ASS'Y. NO.
1	RASB-1	A5137
	RARB-1	A5124
SCALE	CODE	
1:1	A	

THE CONTENTS OF THIS DRAWING ARE THE EXCLUSIVE PROPERTY OF THE TECHNICAL MATERIEL CORP. ITS UNAUTHORIZED USE OR REPRODUCTION IN WHOLE OR IN PART IS STRICTLY FORBIDDEN.

REQ'D.	ITEM	PART NUMBER	DESCRIPTION	SYMBOL
2	1	NT129-632-4	NUT, PLAIN, SPLINE	

LARGER LIST OF MATERIAL

MATERIAL	FINISH	TITLE
.064 ALUMINUM 5052-H32	S404 YEL IRIDITE	BRACKET, FILTER

THE TECHNICAL MATERIEL CORP.  
MAMARONECK, NEW YORK

DRAWN	DATE	FINAL APPROVAL	DATE
Bm	1 Jul 65	11/11/65	10/26/65
CHECKED	DATE	DATE	
Ø	9/29/65		
ELECT. DES.	DATE		
MECH. DES.	DATE		

MS4668

REPROVAL NO. 440H  
21528

MS4668