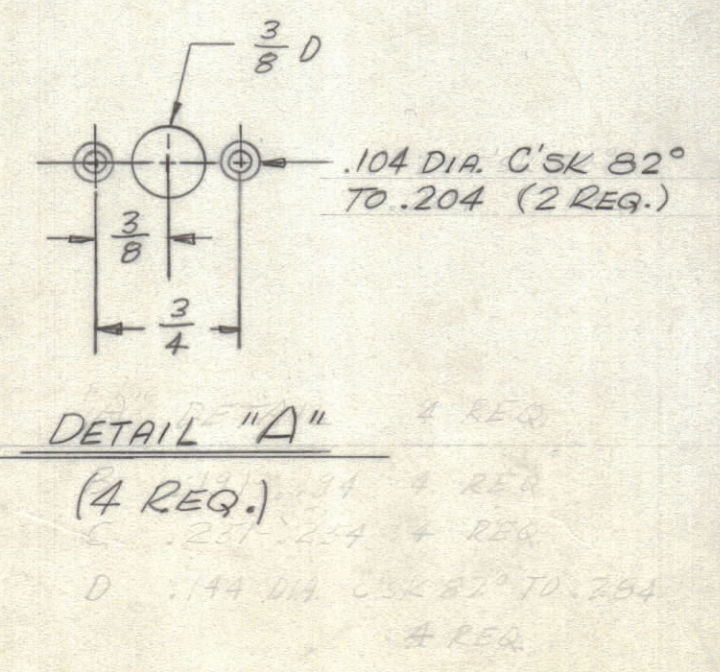
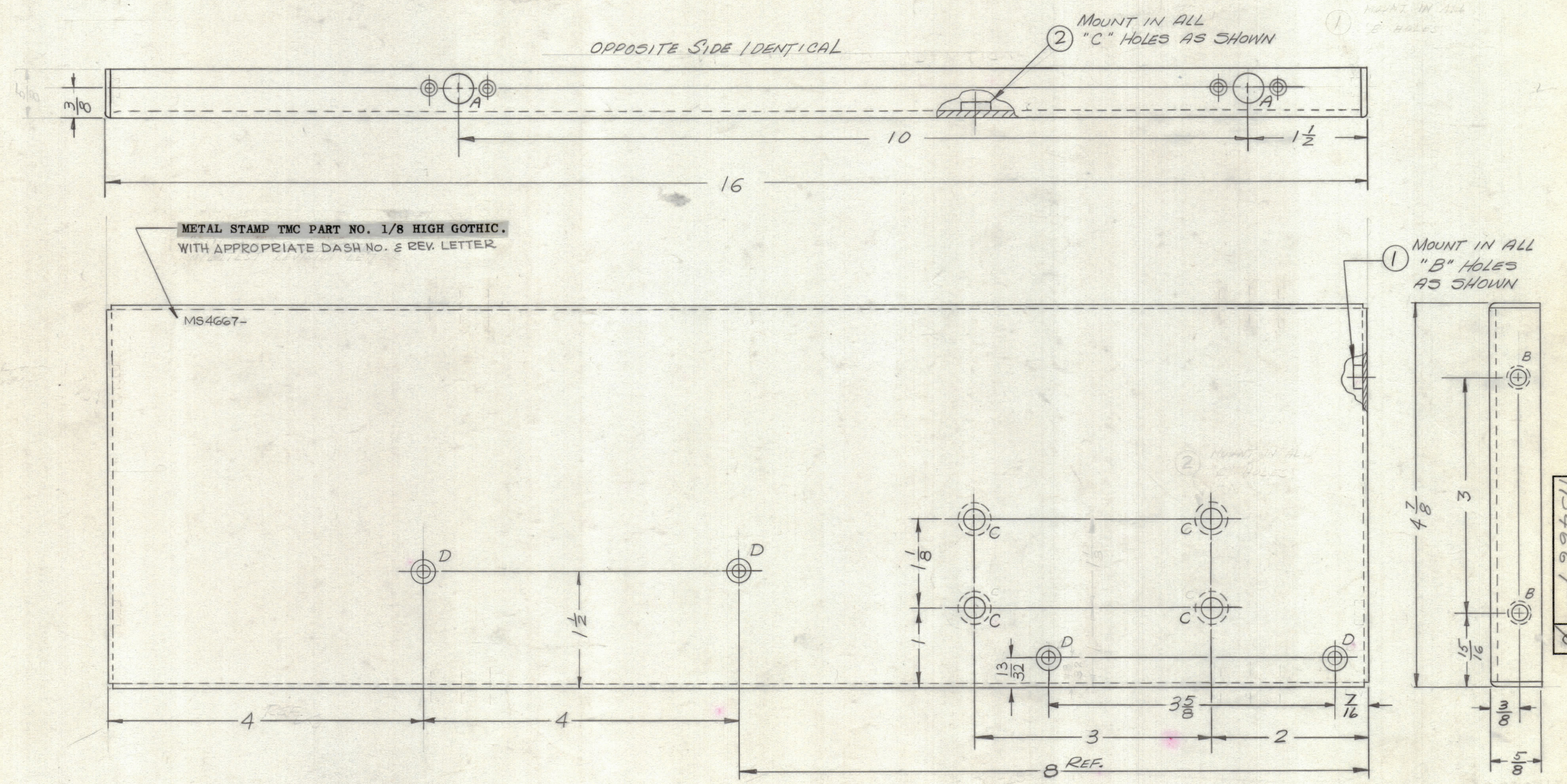


TMC PT. No.	DESCRIPTION
MS4667-1	LEFT SIDE, AS SHOWN
MS4667-2	RIGHT SIDE, OPPOSITE HAND

REVISIONS					
ZONE	SYM	DESCRIPTION	DATE	E.M.N. NO.	APPD
D2+3	X1	ADDED TWO "D" HOLES	7-22-65		
	X2	"C" HOLES WERE .251-.254	9-13-65		
	Ø	ORIGINAL RELEASE FOR PRODUCTION	9/26		



HOLE	DESCRIPTION	REQ.
A	SEE DETAIL	4
B	.191-.194 DIA.	4
C	.250-.253 DIA.	4
D	.144 DIA. C'SK 82° TO .284 DIA.	4

- UNLESS OTHERWISE SPECIFIED:
- USE MATERIAL THICKNESS FOR MAXIMUM RADIUS ON ALL BENDS
 - ALL ANGULAR BENDS 90 DEGREES
 - REMOVE ALL BURRS AND SHARP EDGES
 - MOUNT INSERTS AFTER FINISHING

MS4667-1 LEFT SIDE, AS SHOWN
 MS4667-2 RIGHT SIDE, OPPOSITE HAND
 OPPOSITE SIDE IDENTICAL

REQ'D.	ITEM	PART NUMBER	DESCRIPTION	SYMBOL
4	2	NT129-1032-4	NUT, PLAIN SPLINE	C
4	1	NT129-0632-4	NUT, PLAIN SPLINE	B

LANGER		LIST OF MATERIAL	
MATERIAL	.064 ALUMINUM 5052-H32	THE TECHNICAL MATERIEL CORP. MAMARONECK, NEW YORK	
FINISH	S404 YELLOW 12IDITE	TITLE: PLATE, SIDE (LEFT & RIGHT)	
UNLESS OTHERWISE SPECIFIED DIMENSIONS ARE IN INCHES AND INCLUDE CHEMICALLY APPLIED OR PLATED FINISHES		DRAWN	DATE
DECIMALS .X ± .05 .XX ± .01 .XXX ± .005		CHECKED	DATE
FRACTIONS ANGLES ± 1/64 ± 0° 30'		ELECT. DES.	DATE
TOLERANCES		MECH. DES.	DATE

1 EACH	RASB-1	A5128-1, A5128-2
1 EACH	RARB-1	
Q'TY./UNIT	MODEL USED ON	ASS'Y. NO.
SCALE	CODE	
THE CONTENTS OF THIS DRAWING ARE THE EXCLUSIVE PROPERTY OF THE TECHNICAL MATERIEL CORP. ITS UNAUTHORIZED USE OR REPRODUCTION IN WHOLE OR IN PART IS STRICTLY FORBIDDEN.		