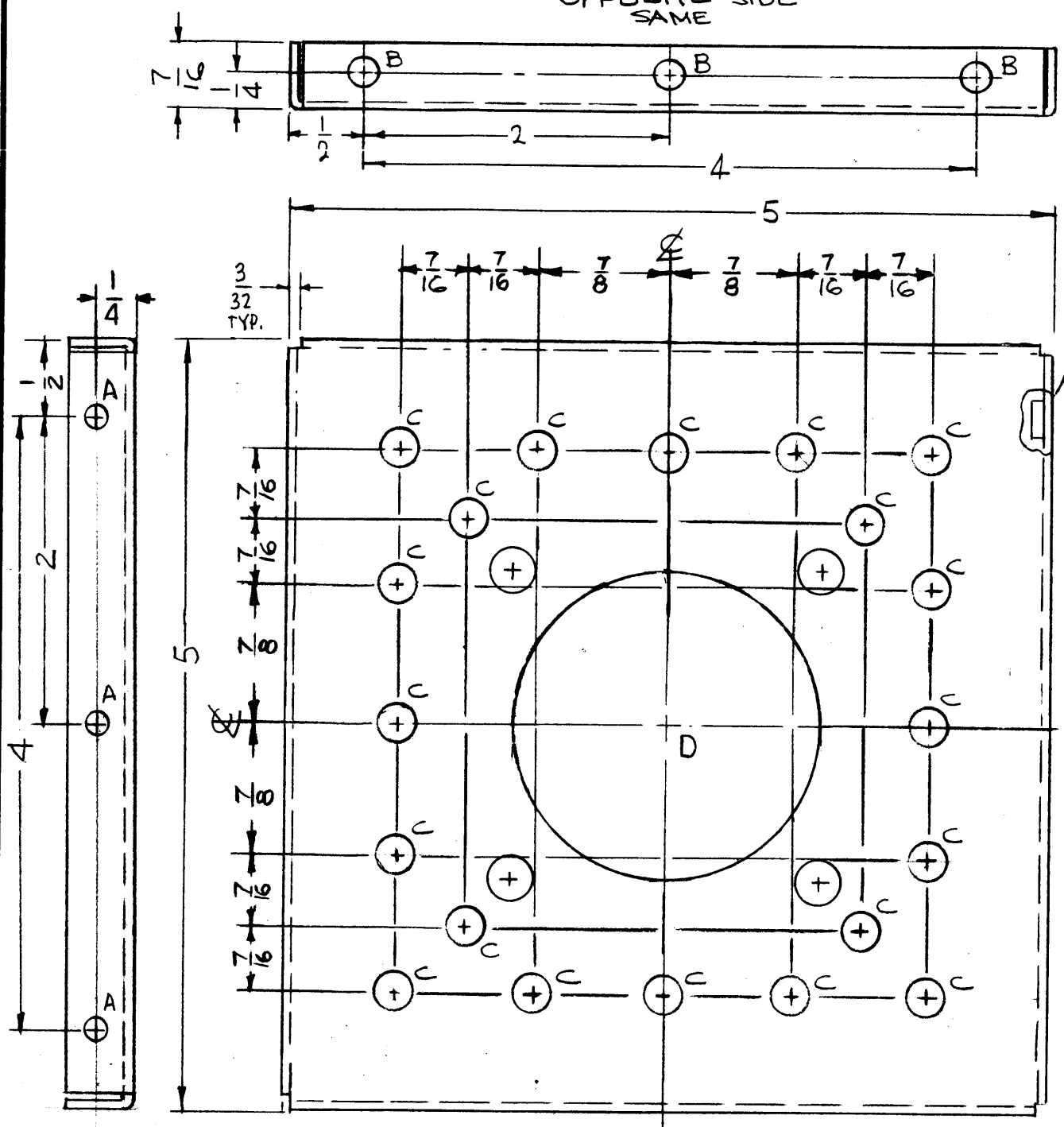


OPPOSITE SIDE SAME



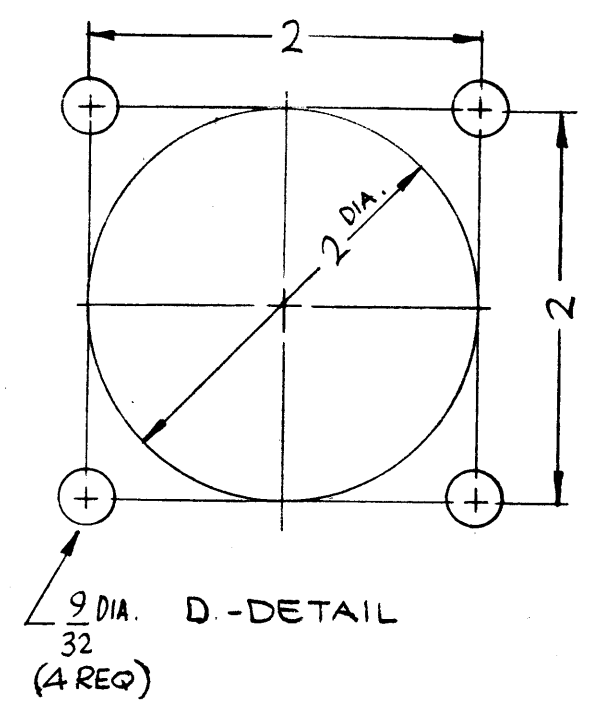
1 MOUNT IN ALL B HOLES

MS4661

REVISIONS				
SYM	DESCRIPTION	DATE	E.M.N. NO.	CHKD
X1	COMPLETELY REVISED	7-1-65	X1	AKB
Ø	ORIGINAL RELEASE FOR PRODUCTION	3-3-66	-	JC

HOLES	DESCRIPTION	REQ
A	11/64 DIA.	3
B	.191-.194 DIA	9
C	1/4 DIA.	20
D	SEE DETAIL	1

MARK TMC PART NO. 1/8 HIGH GOTHIC W/LATEST REV. LETTER.



9	1	NT129-632-4	NUT, PLAIN, SPLINE	B
REQ'D.	ITEM	PART NUMBER	DESCRIPTION	SYMBOL

F. BUDETTI LIST OF MATERIAL

MATERIAL .064 THICK ALUMINUM 5052-H 32

FINISH COPPER FLASH S245 SILVER PLATE S 423 IRIDITE 18-P SILVER KOTE

THE TECHNICAL MATERIEL CORP. MAMARONECK, NEW YORK

TITLE PLATE, END, FIXED FILTER

UNLESS OTHERWISE SPECIFIED DIMENSIONS ARE IN INCHES AND INCLUDE CHEMICALLY APPLIED OR PLATED FINISHES	DRAWN <i>AKB</i> DATE 5-27-65	FINAL APPROVAL <i>AKB</i> DATE 3/2/66
DECIMALS .X ± .05 .XX ± .01 .XXX ± .005	TOLERANCES ± 1/64 ANGLES ± 0° 30'	ELECT. DES. <i>AKB</i> MECH. DES. <i>AKB</i>
THE CONTENTS OF THIS DRAWING ARE THE EXCLUSIVE PROPERTY OF THE TECHNICAL MATERIEL CORP. ITS UNAUTHORIZED USE OR REPRODUCTION IN WHOLE OR IN PART IS STRICTLY FORBIDDEN.		DATE 3/2/66
M/L		MS4661

UNLESS OTHERWISE SPECIFIED:

- USE MATERIAL THICKNESS TO MAXIMUM EXTENT ON ALL EDGES
- ALL ANGULAR EDGES TO BE ROUNDED
- REMOVE ALL BURRS AND SHARP EDGES
- REMOVE IMPURITIES AFTER FINISHING

NOTES