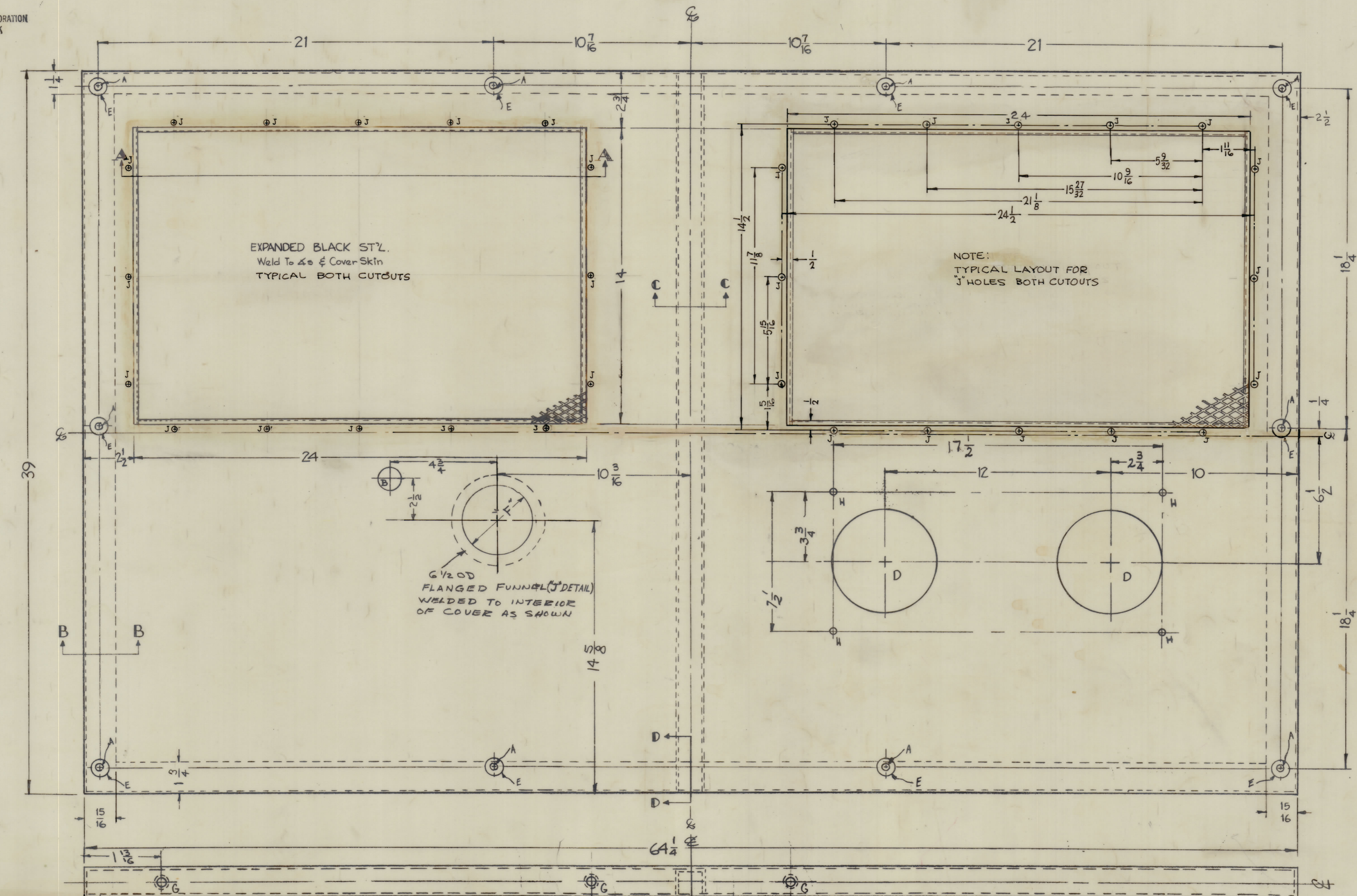
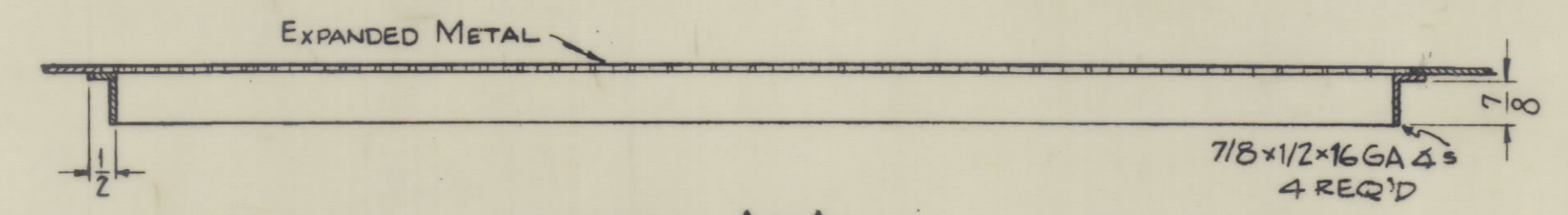


IT IS DESIRABLE TO CHANGE ANY TOLERANCE SPECIFIED ON THIS DRAWING NOTIFY PURCHASER PROMPTLY.
 AZIMUTH ALLOWABLE TOLERANCES HAVE BEEN DETERMINED AND DEVIATIONS WILL BE CAUSE FOR REJECTION.
 REMOVE ALL BURRS AND SHARP EDGES

NOTICE TO PERSONS RECEIVING THIS DRAWING

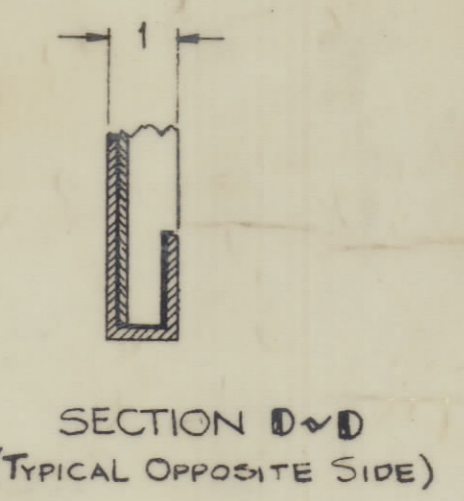
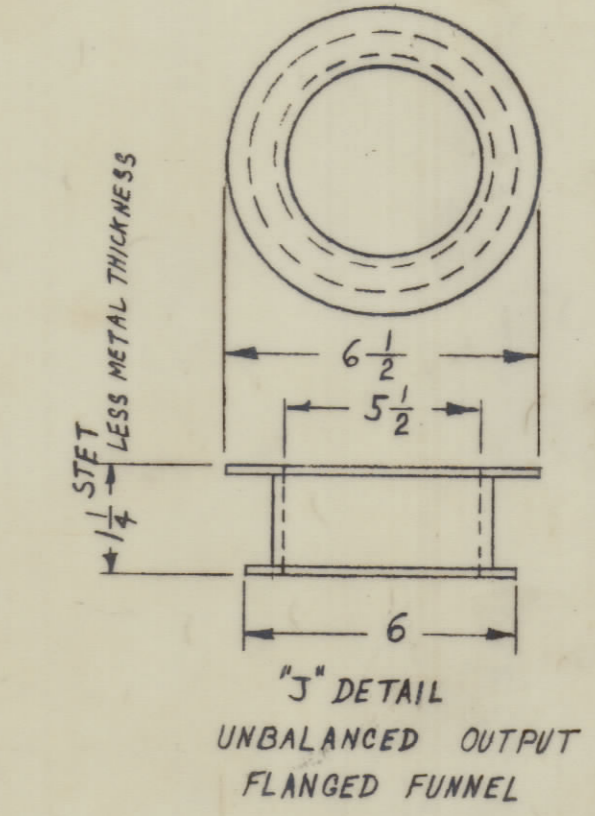
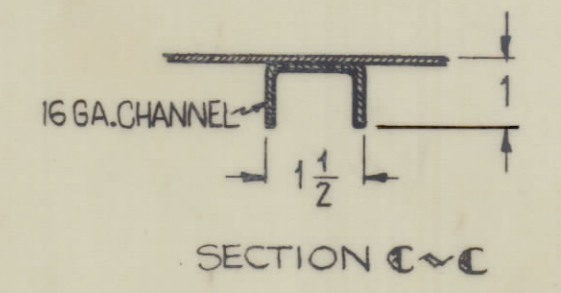
THE TECHNICAL MATERIEL CORPORATION claims copyright in the material disclosed herein. This drawing is issued in confidence for engineering information only and may not be reproduced or used to manufacture anything shown hereon without permission from THE TECHNICAL MATERIEL CORPORATION to the user. This drawing is loaned for mutual assistance and is subject to recall at any time.

Property of:
 THE TECHNICAL MATERIEL CORPORATION
 MAMARONECK, NEW YORK

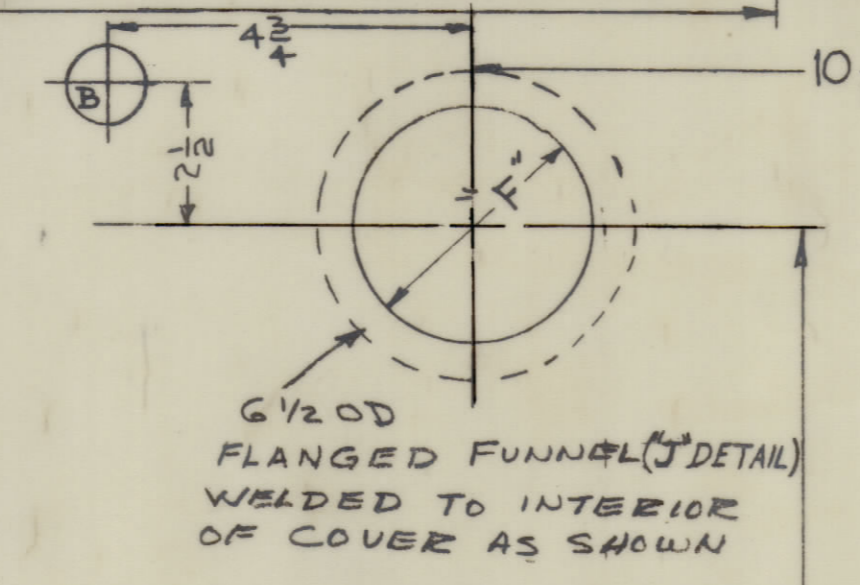
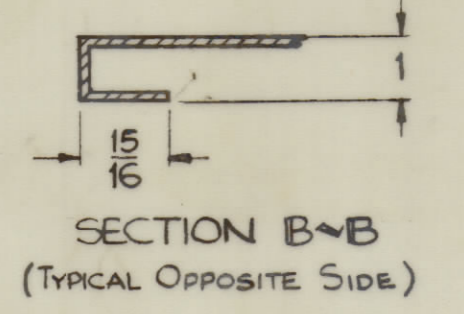


HOLES

REQ.	DESCRIPTION	REQ.
A	3/8 (.375) DIA.	10
B	2-1/4 DIA.	2
C	DELETED	
D	5-1/2 DIA.	2
E	7/8 (.875) DIA.	10
F	5-9/16 DIA.	1
G	10-32 RIV-NUT	6
H	.221-.224 DIA.	4
FOR NT-129-832-4		
J	.250 DIA. THRU SKIN-32 ANGLES	
* MARS METAL PT. NO. 53-032-3		



NOTE: FINISH
 S-371 STEEL DEGREASING
 S-114 ZINC CHROMATE PRIMER
 S-523 BLUE GRAY VINYL OR PRIME & PAINT TO CUSTOMER'S SPEC.



ISSUE	ITEM	CHANGED FROM	DATE	BY	CHKD	ENG. APP.
1	ORIGINAL RELEASE FOR PRODUCTION		3/1/76	G.D.L.		

TOLERANCES
 ALL DEC. DIM. ±
 OTHERS FRACTIONAL DIM. ±
 ANGULAR DIM. ±

DRILL, PUNCH, COMMERCIAL STOCK SIZES AND MANUFACTURERS TOLERANCES ARE NOT INCLUDED.

MARK TMC P/N (MS4653-)
 IN HIGH GOthic
 W/LATEST REV.
 LETTER
 (ON REAR)

NOTE:
 OPPOSITE SIDE
 IDENTICAL (REF "G" HOLES)

REQ. PER UNIT	MODEL	PROJECT NO.	ASSY. NO.	DATE
	GPT-40KEC			2-25-66

REQ. ITEM	PART NO.	F. BUDETTI	DESCRIPTION	SYMBOL
16 GA. STOCK SIZE			THE TECHNICAL MATERIEL CORP. MAMARONECK, NEW YORK	
STEEL			PANEL, TOP, 40K	
MILD				
TYPE & TEMPER				
HEAT TREAT SPEC.				
FINISH & SPEC. NO.				

MS4653/A