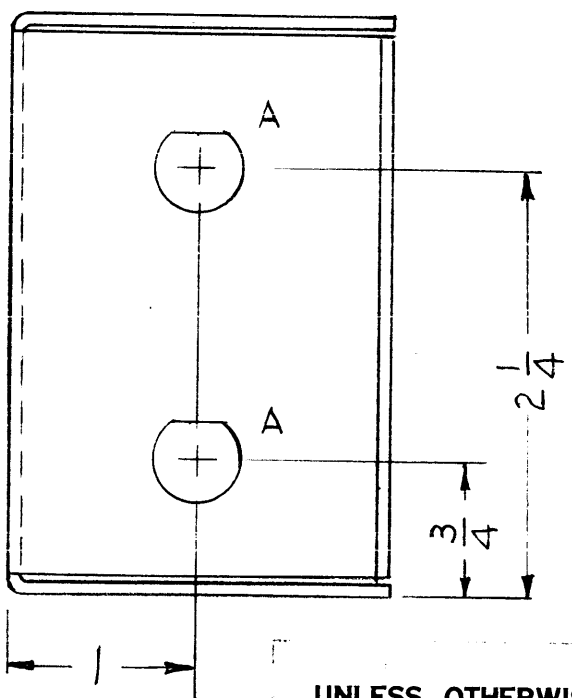
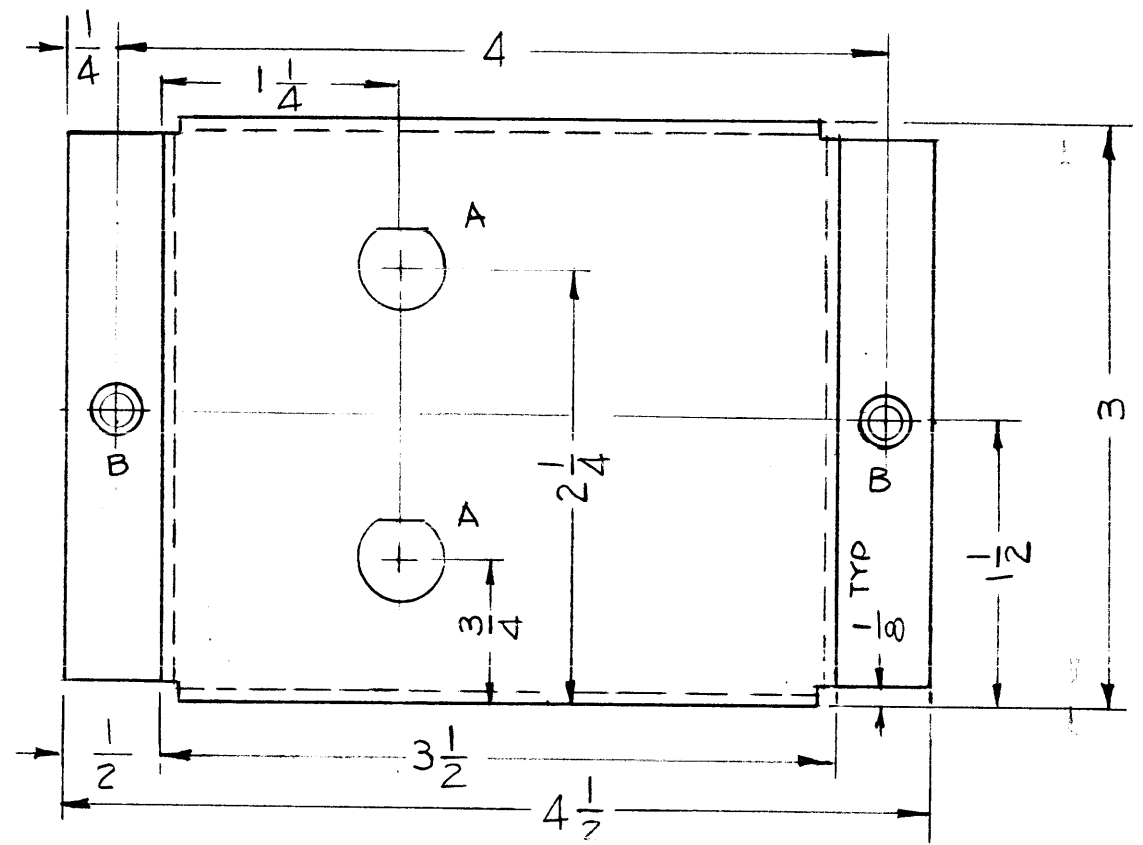
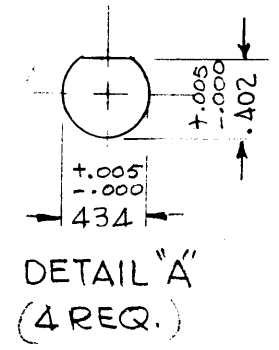


MS4649

REVISIONS						
SYM	DESCRIPTION	DATE	E.M.N. NO.	DRAFT	CHKD	APPD
Ø	ORIGINAL RELEASE FOR PRODUCTION	9/7/65		JCV		



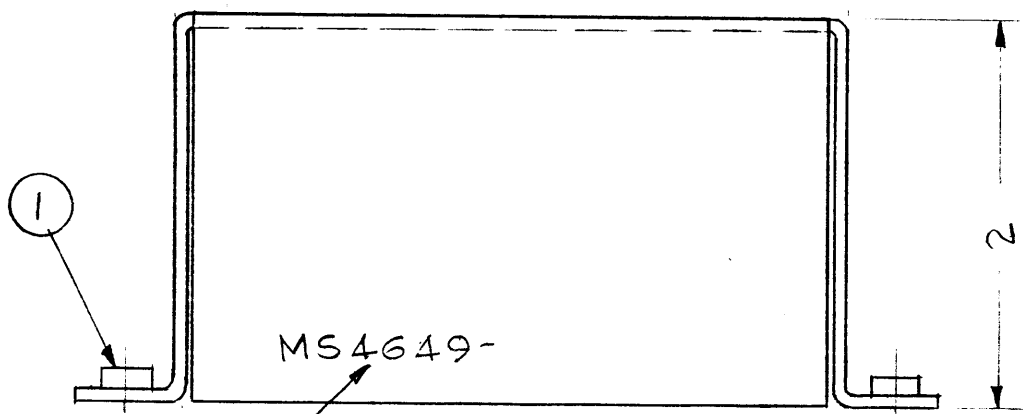
HOLE	DESCRIPTION	REQ.
A	SEE DETAIL	4
B	.191 - .194 DIA.	2



UNLESS OTHERWISE SPECIFIED:

1. USE MATERIAL THICKNESS FOR MAXIMUM RADIUS ON ALL BENDS
2. ALL ANGULAR BENDS 90 DEGREES
3. REMOVE ALL BURRS AND SHARP EDGES
4. MOUNT INSERTS AFTER FINISHING

MOUNT IN "B" HOLES



METAL STAMP TMC P/No. 1/8 HIGH GOTHIC W/LATEST REV. LETTER

REF: LD1956

REQ'D.	ITEM	PART NUMBER	DESCRIPTION	SYMBOL
2	1	NT129-632-4	NUT, PLAIN, SPLINE	B

EATON		LIST OF MATERIAL	
MATERIAL	.064THK ALUMINUM 5052-H32	THE TECHNICAL MATERIEL CORP. MAMARONECK, NEW YORK	
FINISH	S404 YEL. IRIDITE	TITLE BOX, TERMINAL MTG	

1	DDR-5BR	
QTY./UNIT	MODEL USED ON	ASS'Y. NO.
SCALE 1:1	CODE A	

UNLESS OTHERWISE SPECIFIED
DIMENSIONS ARE IN INCHES AND INCLUDE
CHEMICALLY APPLIED OR PLATED FINISHES

DRAWN G.D.L.	DATE 6-29-65	FINAL APPROVAL <i>[Signature]</i>	DATE 9/9/65
CHECKED <i>[Signature]</i>	DATE	MS4649	
ELECT. DES. <i>[Signature]</i>	DATE	Ø	
MECH. DES. <i>[Signature]</i>	DATE	SHEET	
		REV. LTR.	

THE CONTENTS OF THIS DRAWING ARE THE EXCLUSIVE PROPERTY OF THE TECHNICAL MATERIEL CORP. ITS UNAUTHORIZED USE OR REPRODUCTION IN WHOLE OR IN PART IS STRICTLY FORBIDDEN.

NOTES