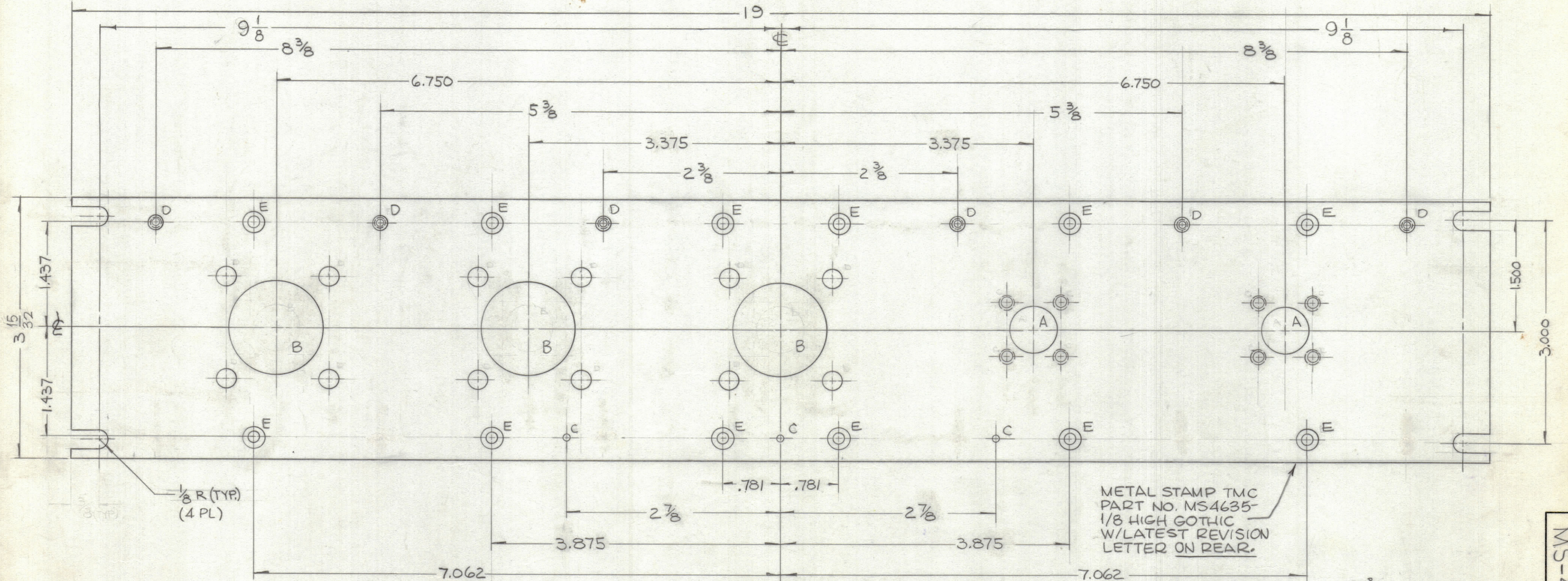


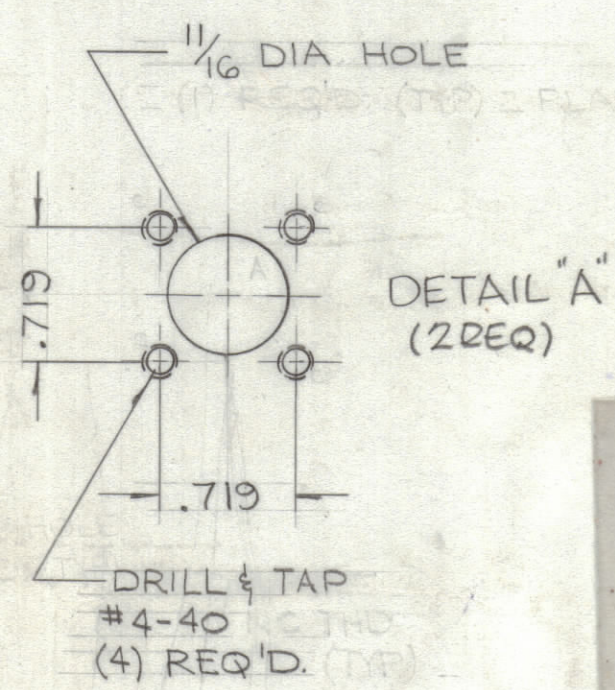
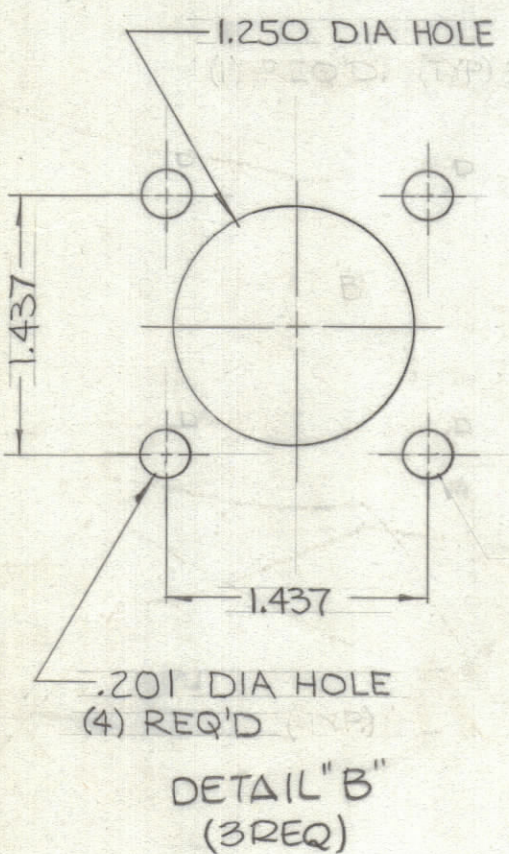
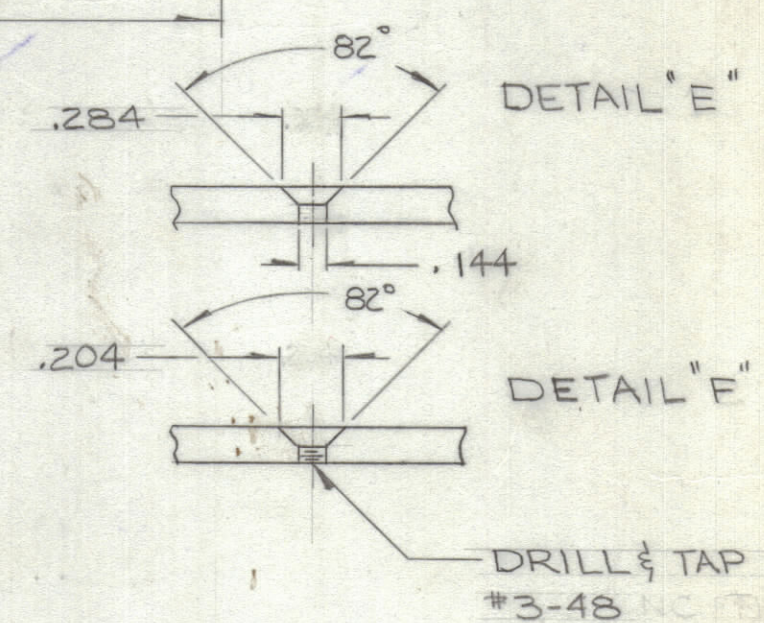
REVISIONS						
ZONE	SYM	DESCRIPTION	DATE	E.M.N. NO.	DRAFT	CHKD
Ø		ORIGINAL RELEASE FOR PRODUCTION	6/28/65	-A	JC	APPD



FRONT VIEW SHOWN

HOLE KEY

- "A" SEE DETAIL (2) REQ'D.
- "B" SEE DETAIL (3) REQ'D.
- "C" NO. 50 DRILL (3) REQ'D.
- "D" SEE DETAIL (6) REQ'D.
- "E" SEE DETAIL (12) REQ'D.



MACHINING:

- MILL ALL EDGES.
- HOLES MUST BE DRILLED, UNLESS OTHERWISE SPECIFIED.
- LATERAL BOW OF PANEL MUST BE KEPT TO .031 TOLERANCE.
- PANEL MUST BE FREE OF ALL MACHINING MARKS, GOUGES AND SCRATCHES. IF NECESSARY, SAND FRONT OF PANEL WITH NO. 120 GRIT SANDPAPER.

FINISH NOTES:

- S404 - IRIDITE 14-2 AL-COAT
 - S114 - ZINC CHROMATE PRIMER } FRONT AND
 - S115 - SMOOTH GRAY ENAMEL } EDGES ONLY
- OR
PRIME AND PAINT PER CUSTOMER'S SPECIFICATIONS.

NOTES

QTY./UNIT	MODEL USED ON	ASS'Y. NO.
SCALE	CODE	

THE CONTENTS OF THIS DRAWING ARE THE EXCLUSIVE PROPERTY OF THE TECHNICAL MATERIEL CORP. ITS UNAUTHORIZED USE OR REPRODUCTION IN WHOLE OR IN PART IS STRICTLY FORBIDDEN.

REQ'D.	ITEM	PART NUMBER	DESCRIPTION	SYMBOL
MARTINENGO LIST OF MATERIAL				
MATERIAL		3/16 THK ALUMINUM STOCK, 2024 T3	THE TECHNICAL MATERIEL CORP. MAMARONECK, NEW YORK	
FINISH		SEE NOTE 1	FRONT PANEL, MACHINING	
UNLESS OTHERWISE SPECIFIED DIMENSIONS ARE IN INCHES AND INCLUDE CHEMICALLY APPLIED OR PLATED FINISHES	DRAWN	DATE	FINAL APPROVAL	DATE
DECIMALS X ± .05 XX ± .01 XXX ± .005	CHECKED	6/14/65	MS-4635	6/28/65
FRACTIONS ± 1/64 ANGLES ± 0° 30'	ELECT. DES.	DATE		REV. LTR.
TOLERANCES		MECH. DES.	DATE	SHEET
		6/1/65		

MS-4635