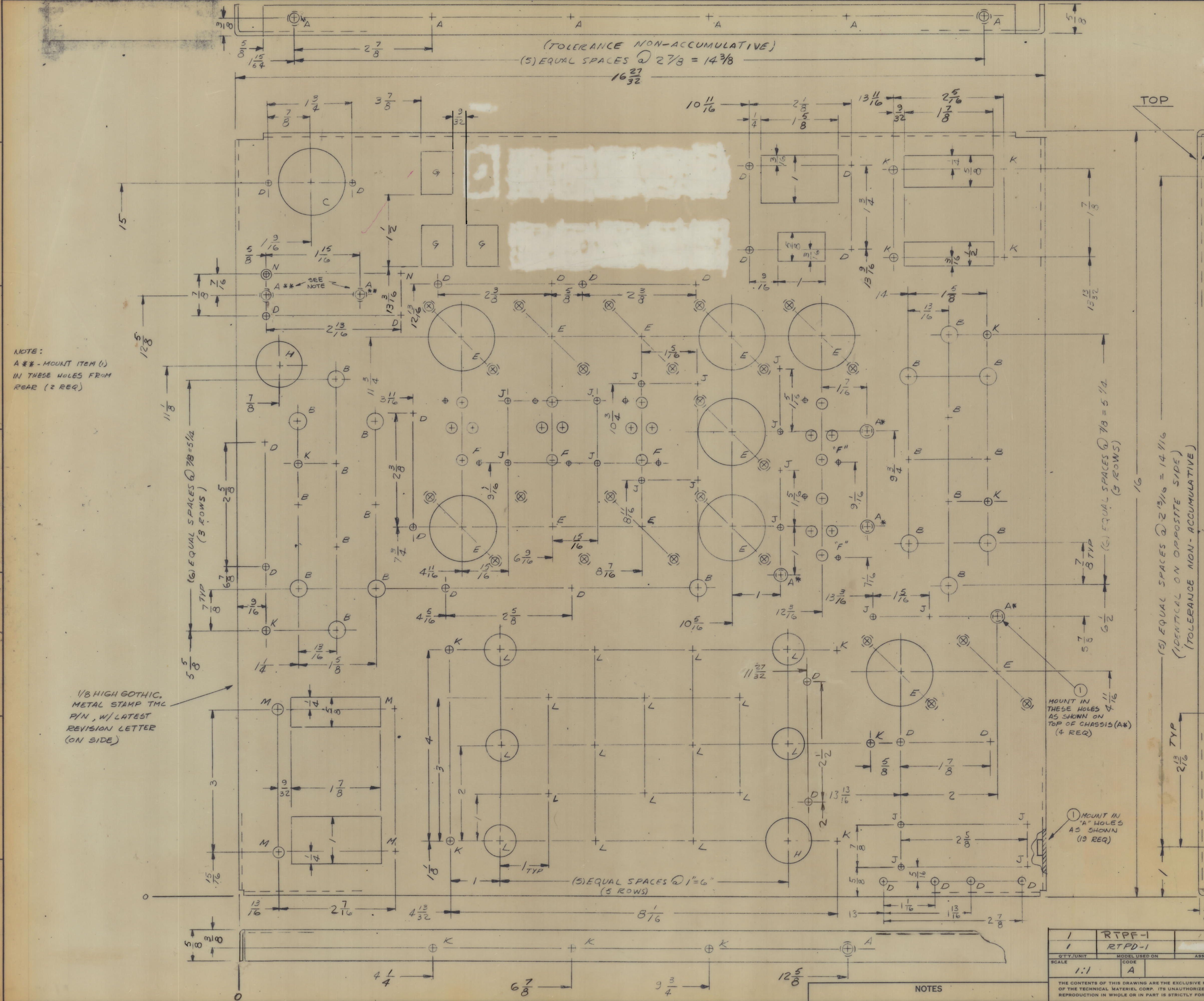


ZONE		SYM		DESCRIPTION		DATE	EM.N. NO.	DRAFT	CHKD	APPD
FB	X			1/8" CUTOUT DELETED QTY WAS 4		10/65	X	R.V.V.		
				ORIGINAL RELEASE FOR PROD		10/65				



NOTE:  
A\*\* - MOUNT ITEM (1)  
IN THESE HOLES FROM  
REAR (2 REQ)

1/8 HIGH GOTHIC,  
METAL STAMP TMC  
P/N, W/LATEST  
REVISION LETTER  
(ON SIDE)

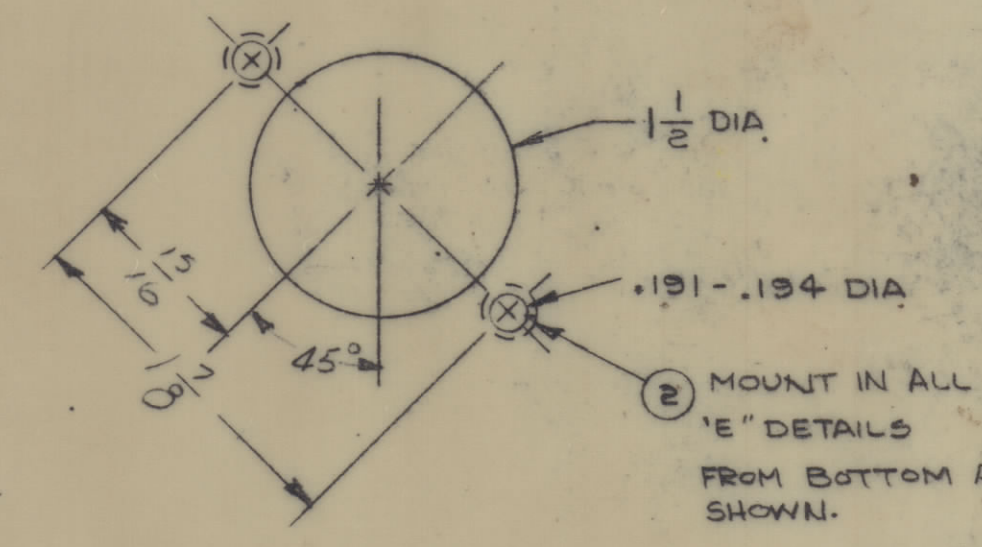
MOUNT IN THESE HOLES  
AS SHOWN ON  
TOP OF CHASSIS (A\*)  
(4 REQ)

MOUNT IN  
"A" HOLES  
AS SHOWN  
(13 REQ)

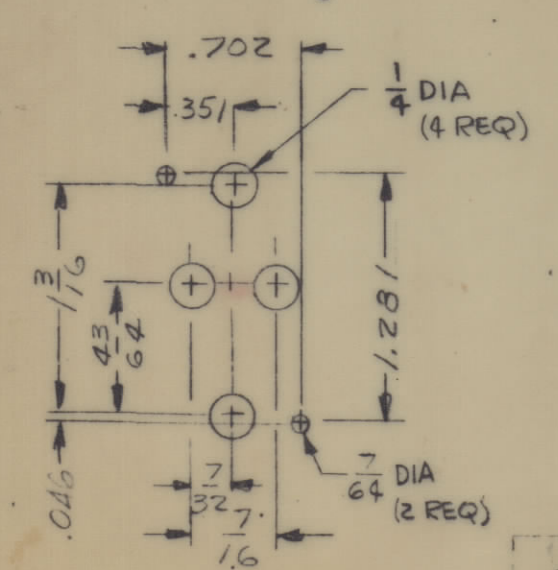
TOP  
BOTTOM  
(SEE DETAIL "E")

HOLE	DESCRIPTION	REQ
A	.221 -.224 DIA	25
B	5/16 DIA	21
C	1.3/8 DIA	1
D	11/64 DIA	26
E	SEE DETAIL	12
F	SEE DETAIL	5
G	21/32 X 23/32 CUTOUT	3
H	15/16 DIA	2
J	9/64 DIA	17
K	3/16 DIA	16
L	11/16 DIA	17
M	13/64 DIA	4
N	.144 DIA, C'SINK 82° TO .284 DIA	2

DETAIL "E"



DETAIL "F"



- UNLESS OTHERWISE SPECIFIED:
1. USE MATERIAL THICKNESS FOR MAXIMUM RADIUS ON ALL BENDS
  2. ALL ANGULAR BENDS 90 DEGREES
  3. REMOVE ALL BURRS AND SHARP EDGES
  4. MOUNT INSERTS AFTER FINISHING

REF: LD1909

QTY	ITEM	PART NUMBER	DESCRIPTION	DET.
24	2	NT129-632-4	NUT, PLAIN, SPLINE	"E"
25	1	NT129-832-4	NUT, PLAIN, SPLINE	A

EATON		LIST OF MATERIAL	
MATERIAL	.081, ALUMINUM 5052-H32	THE TECHNICAL MATERIEL CORP. MAMARONECK, NEW YORK	
FINISH	S404 YELLOW IRIDIUM	TITLE CHASSIS, ELECTRICAL, MAIN	

SCALE	CODE	ASSY. NO.	DATE	FINAL APPROVAL	DATE
1:1	A		5/25/65		10/65

UNLESS OTHERWISE SPECIFIED DIMENSIONS ARE IN INCHES AND INCLUDE CHEMICALLY APPLIED OR PLATED FINISHES

DECIMALS	FRACTIONS	TOLERANCES	ANGLES
.XX ± .01	± 1/64		± 30°
.XXX ± .005	± 1/32		

NOTES

MS4602

M/L  
J. MUNFORD

STOCK NO. 1015