

COIL MAT'L
 .091 THICK X 1/2 WIDE
 COLD ROLLED COPPER

NOTES:
 - ROUND ALL EDGES
 - SILVER SOLDER AS SHOWN.

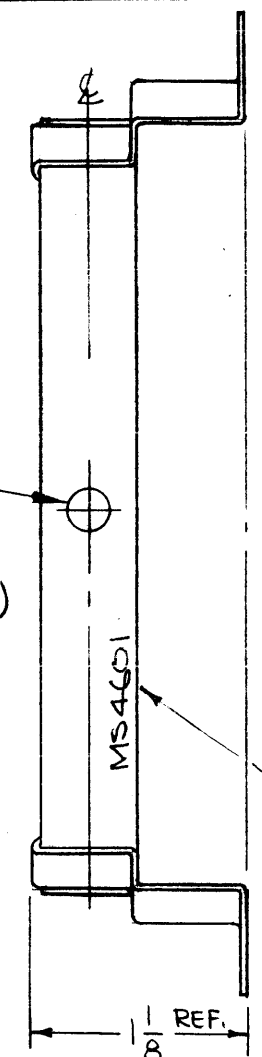
NOTES

1	HFLA-10K	AX743
1	TSTE 10K	
Q'TY./UNIT	MODEL USED ON	ASS'Y. NO.
SCALE 1:1	CODE A	

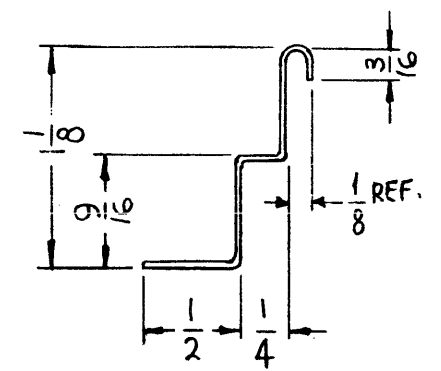
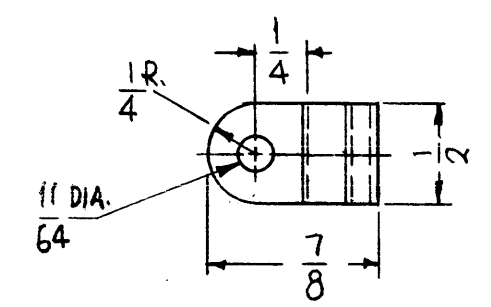
THE CONTENTS OF THIS DRAWING ARE THE EXCLUSIVE PROPERTY OF THE TECHNICAL MATERIEL CORP. ITS UNAUTHORIZED USE OR REPRODUCTION IN WHOLE OR IN PART IS STRICTLY FORBIDDEN.

MS 4601

REVISIONS						
SYM	DESCRIPTION	DATE	E.M.N. NO.	DRAFT	CHKD	APPD
X1	DWG NO. WAS CL380	5-26-65	X1	SRG		
Ø	ORIGINAL RELEASE FOR PRODUCTION	5/16/67	Ø	CV		JLD
A	13/64 DIA. HOLE WAS 15° OFF Q	4-7-72	20574	GE	ef	ef
B	ADD SECOND 13/64 DIA. HOLE	4-26-72	20629	GE	ef	ef



METAL STAMP
 TMC PART NO.
 1/8 HIGH GOTHIC
 W/LATEST REV.
 LETTER.



BRACKET - DETAIL
 4 REQ.

MAT'L - .031 THICK HOT ROLLED COPPER

REQ'D.	ITEM	PART NUMBER	DESCRIPTION	SYMBOL
F. BUDETTI LIST OF MATERIAL				
MATERIAL AS NOTED			THE TECHNICAL MATERIEL CORP. MAMARONECK, NEW YORK	
FINISH S245 SILVER PLATE S423 IRIDITE 18-P SILVER-KOTE			TITLE RING, GRID	
UNLESS OTHERWISE SPECIFIED DIMENSIONS ARE IN INCHES AND INCLUDE CHEMICALLY APPLIED OR PLATED FINISHES			DRAWN SRC	DATE 5-18-65
DECIMALS .X ± .05 .XX ± .01 .XXX ± .005			CHECKED	DATE
FRACTIONS ± 1/64 ANGLES ± 0° 30'			ELECT. DES.	DATE
TOLERANCES			MECH. DES.	DATE
			FINAL APPROVAL	DATE 5/14/67
			MS 4601	B
			SHEET	REV. LTR.