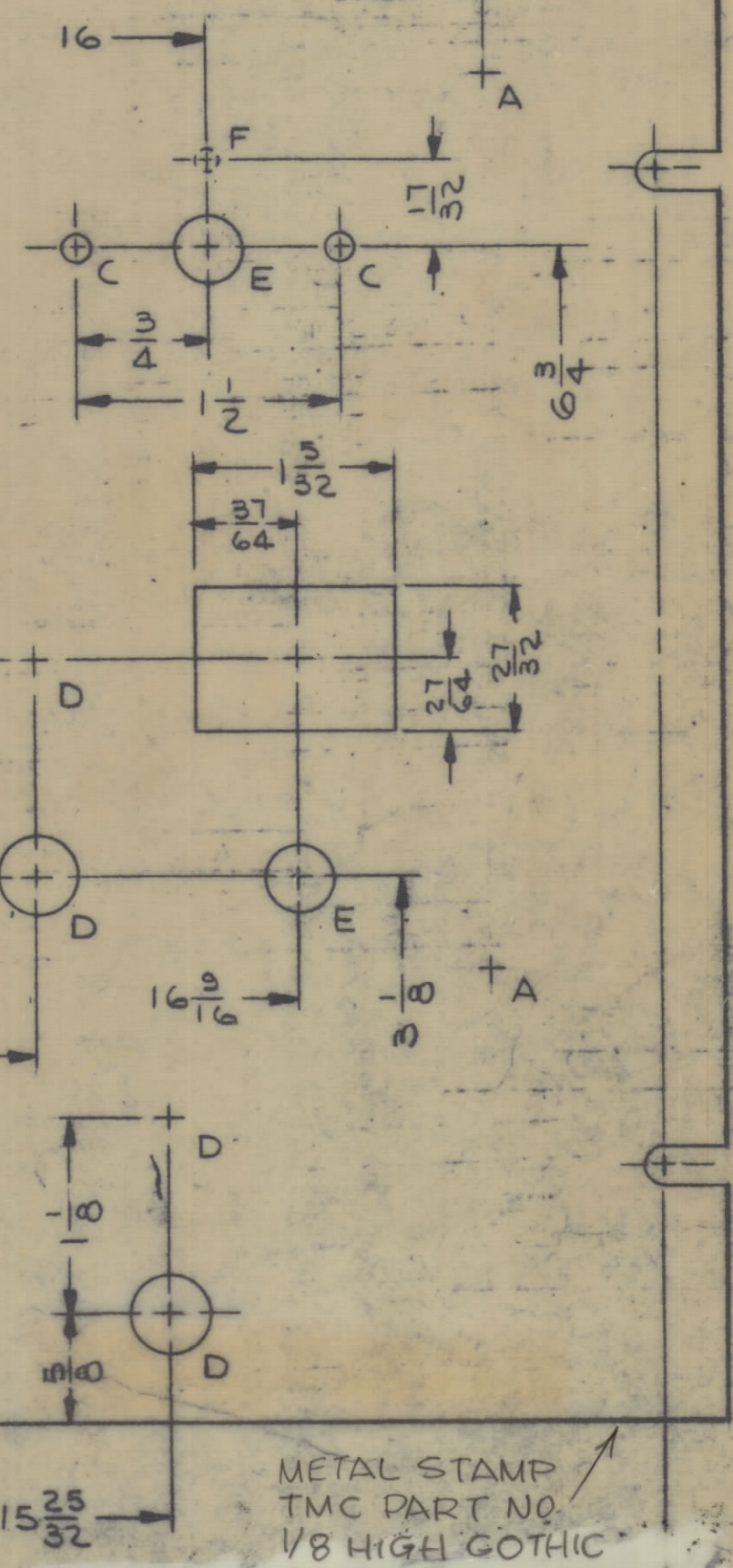
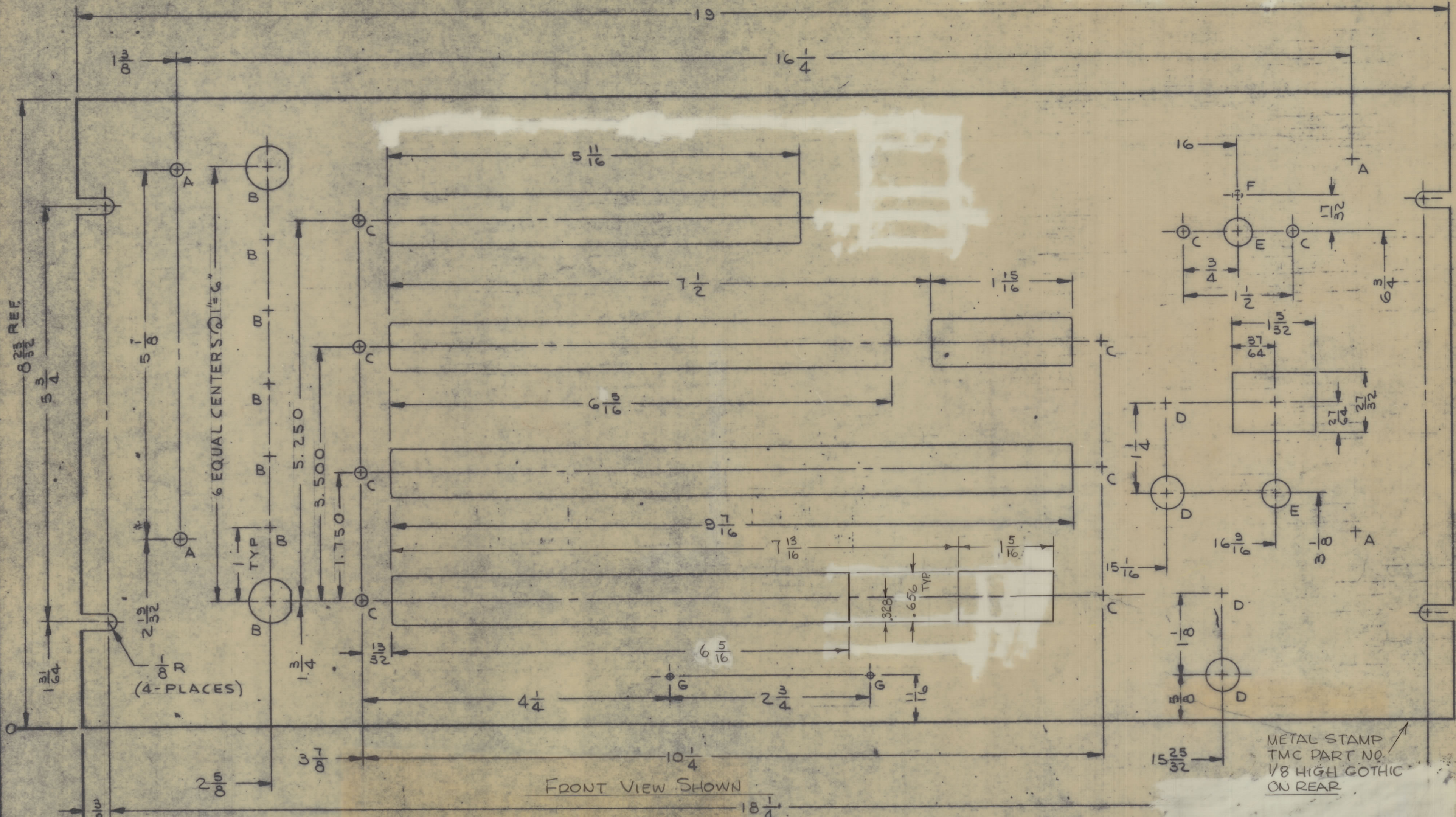


REVISED		DESCRIPTION	DATE	E.M.N. NO.	DRAFT	CHKD	APPO
Ø		ORIGINAL RELEASE FOR PRODUCTION	8-31-65				



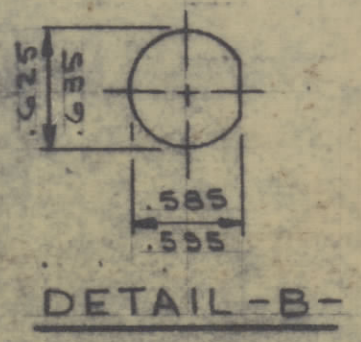
HOLE LEGEND		
HOLE	DESCRIPTION	REQD
A	13/64 DIA	4
B	SEE DETAIL	7
C	3/16 DIA	9
D	15/32 DIA	4
E	13/32 DIA	2
F	5/32 DIA X 1/8 DP	1
G	NO. 48 (.0760) DR	2

**MACHINING:**

- MILL ALL EDGES.
- HOLES MUST BE DRILLED, UNLESS OTHERWISE SPECIFIED.
- LATERAL BOW OF PANEL MUST BE KEPT TO .031 TOLERANCE.
- PANEL MUST BE FREE OF ALL MACHINING MARKS, GOUGES AND SCRATCHES. IF NECESSARY, SAND FRONT OF PANEL WITH NO. 120 GRIT SANDPAPER.

**FINISH NOTES:**

- S404 - IRIDITE 14-2 AL-COAT.
- S114 - ZINC CHROMATE PRIMER FRONT AND
- S115 - SMOOTH GRAY ENAMEL EDGES ONLY



REF: LD 1902

REQ'D	ITEM	PART NUMBER	DESCRIPTION	SYMBOL
<b>F. E. EATON LIST OF MATERIAL</b>				
MATERIAL			THE TECHNICAL MATERIEL CORP.	
3/16 THK ALUMINUM			MAMARONECK, NEW YORK	
2024-T3			TITLE	
FINISH			PANEL, FRONT	
SEE NOTES			DRAWN	
			J. LESHINSKI	
			DATE	
			8/31/65	
			CHECKED	
			W. JORDAN	
			DATE	
			8/31/65	
			ELECT. DES.	
			DATE	
			8/31/65	
			DRY	
			DATE	
			8/31/65	
			REV. LTR.	
			Ø	

RTPD-1		
QTY/UNIT	MODEL USER OR	ASSY. NO.
	SCALE	
	A	
THE CONTENTS OF THIS DRAWING ARE THE EXCLUSIVE PROPERTY OF THE TECHNICAL MATERIEL CORP. ITS UNAUTHORIZED USE OR REPRODUCTION IN WHOLE OR IN PART IS STRICTLY FORBIDDEN.		
DECIMALS	FRACTIONS	TOLERANCES
XX ± .05	± 1/64	XX ± .01
XX ± .01	ANGLES	XX ± .005
XX ± .005	± 9° 30'	

NOTES

MS 4591