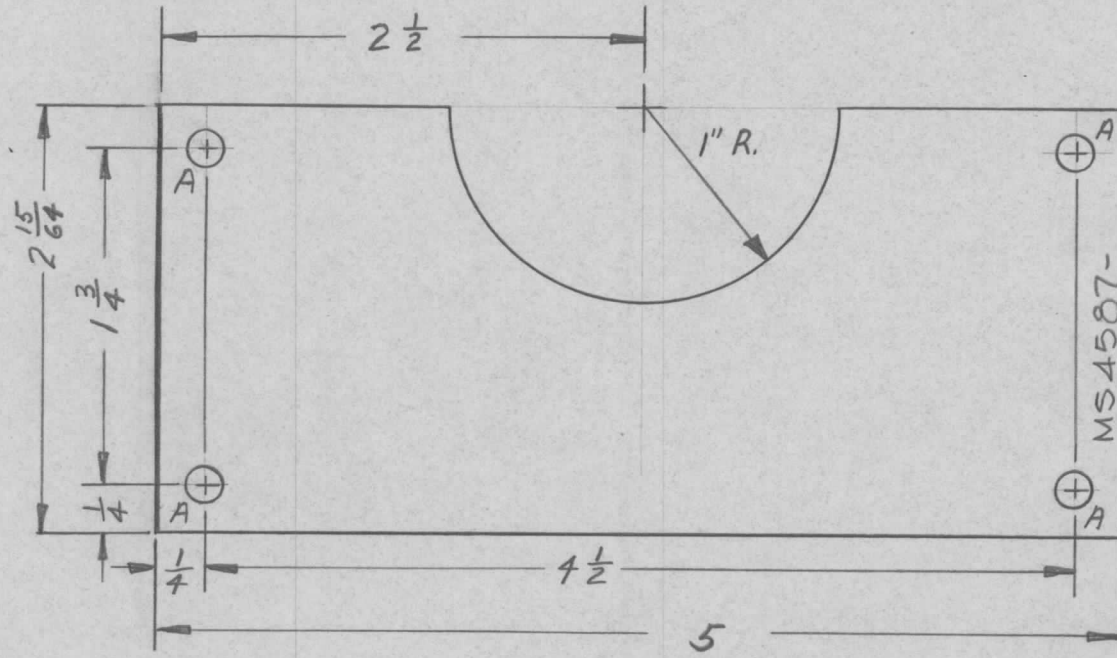


A - $\frac{11}{64}$ D. 4 REQ.

REQ. PER UNIT	USED ON			MS4587 \emptyset
	MODEL	ASS'Y. NO.	DATE	
2	TSTE10K/AX563		13 MAY 65	



METAL STAMP TMC PART NO.

1/8 HIGH GOTHIC

W/LATEST REVISION LETTER.

SYM	DESCRIPTION	DATE	CH. NO.	DRAFTS	CHECKER	ENG. APP.	REQ. ITEM	PART NO.	DESCRIPTION	SYMBOL
\emptyset	ORIGINAL RELEASE FOR PRODUCTION	5/16/67	\emptyset	CV		<i>JDe</i>	.064 THK.	THE TECHNICAL MATERIEL CORP.		
X	EXPERIMENTAL RELEASE	5/13/65	AA	BM			STOCK SIZE	MAMARONECK, NEW YORK		
							ALUMINUM	PLATE, COVER		
							MATERIAL	CABLE ACCESS HOLE		
							5052-H32	<i>BM</i>	<i>BM</i>	<i>BM</i>
							TYPE & TEMPER	DRAWN	CHECKED	FINAL APPROVAL
							S404 YEL. IRIDITE	<i>aa</i>		
							FINISH & SPEC. NO.	ELEC. DES. APP.	MECH. DES. APP.	MS4587 \emptyset