

HOLES:

A - 13/64 DIA

B - 15/64 DIA

REQ

3

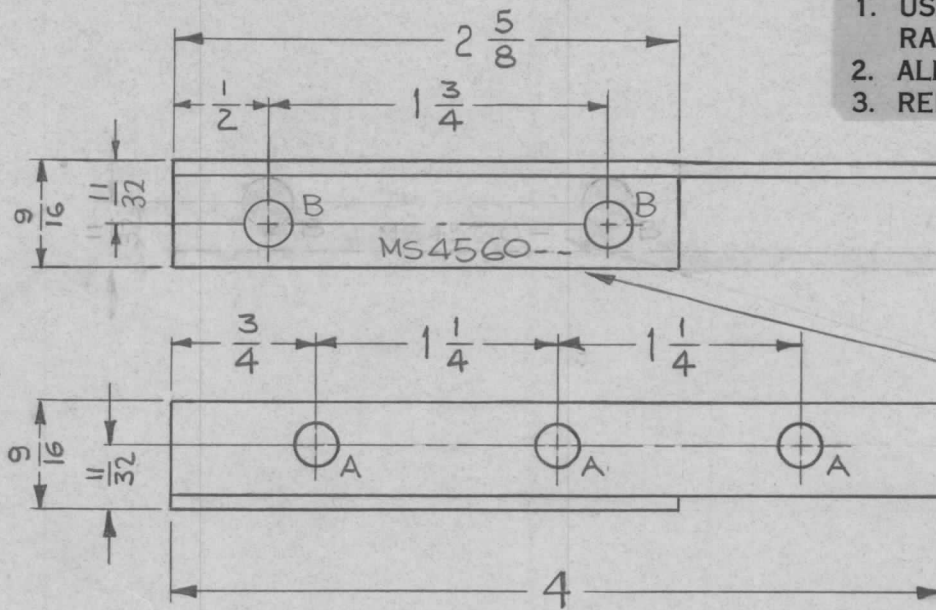
2

REQ. PER UNIT	USED ON		
	MODEL	ASS'Y. NO.	DATE
1 EA.	TST () 10K		5.7.65

MS4560-Ø

UNLESS OTHERWISE SPECIFIED:

1. USE MATERIAL THICKNESS FOR MAXIMUM RADIUS ON ALL BENDS
2. ALL ANGULAR BENDS 90 DEGREES
3. REMOVE ALL BURRS AND SHARP EDGES



MARK TMC PART NO
1/8 HIGH GOTHIC, WITH
LATEST REVISION LETTER

NOTE:

MS4560-1 ~ AS SHOWN
MS4560-2 ~ OPPOSITE HAND

							REQ. ITEM	PART NO.	F. BUDETTI	DESCRIPTION	SYMBOL	
								.081 THK	THE TECHNICAL MATERIEL CORP. MAMARONECK, NEW YORK			
								STOCK SIZE	BRACKET, MTG., CAP.			
Ø	ORIGINAL RELEASE FOR PRODUCTION	2-16-66	MA	Jc				ALUMINUM				
SYM	DESCRIPTION	DATE	CH. NO.	DRAFTS	CHECKER	ENG. APP.		MATERIAL				
UNLESS OTHERWISE SPECIFIED DIMENSIONS ARE IN INCHES AND INCLUDE CHEMICALLY APPLIED OR PLATED FINISHES		SCALE		1:1				5052-H32	hjb	JCB	1/1/65	
DECIMALS .X ± .05 .XX ± .01 .XXX ± .005	TOLERANCES	FRACTIONS ± 1/64 ANGLES ± 0° 30'	CODE A					TYPE & TEMPER	HEAT TREAT. SPEC.	DRAWN	CHECKED	FINAL APPROVAL
								S404 YEL. IRIDITE				MS4560-Ø
								FINISH & SPEC. NO.	ELEC. DES. APP.	MECH. DES. APP.		