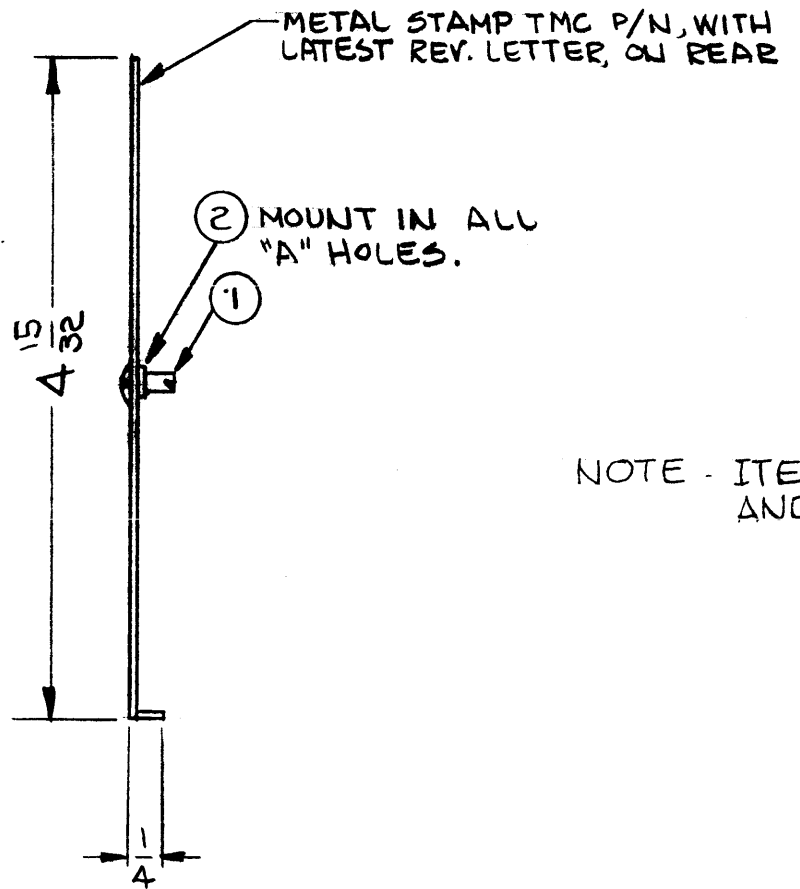
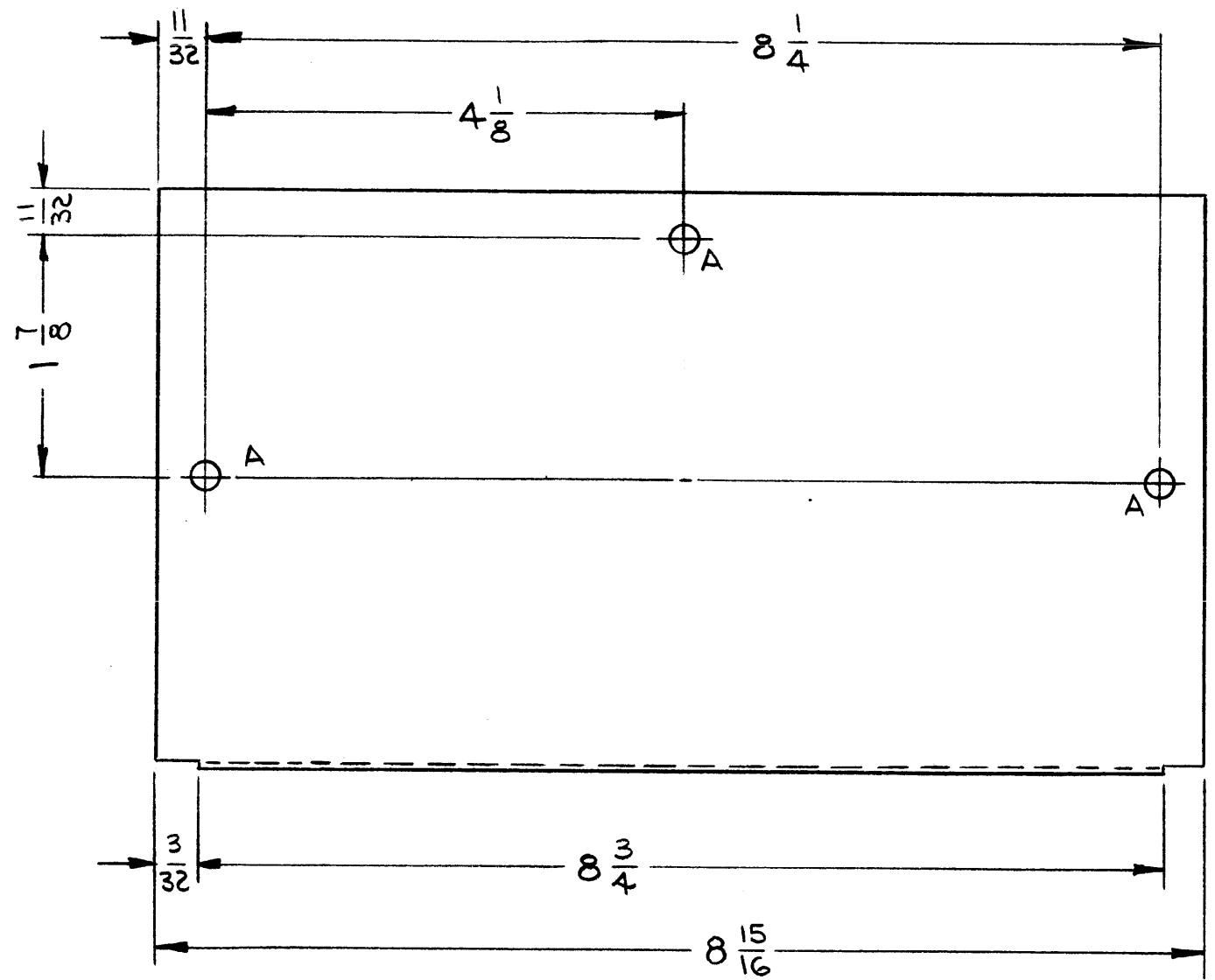


SYM	DESCRIPTION	DATE	E.M.N. NO.	DRAFT	CHKD	APPD
XI	NOTE ADDED	6/30/65		JC	JSM	
Ø	ORIGINAL RELEASE FOR PRODUCTION	7-22-65	Ø	X.V.		

MS4549



HOLE	DESCRIPTION	REQ.
A	1/4 DIA.	3

NOTE - ITEMS 1 & 2 TO BE SUPPLIED AND ASSEMBLED BY TMC.

- UNLESS OTHERWISE SPECIFIED:
1. USE MATERIAL THICKNESS FOR MAXIMUM RADIUS ON ALL BENDS
  2. ALL ANGULAR BENDS 90 DEGREES
  3. REMOVE ALL BURRS AND SHARP EDGES
  4. MOUNT INSERTS AFTER FINISHING

**NOTES**

2	RTDA-1	
Q'TY./UNIT	MODEL USED ON	ASS'Y. NO.
SCALE	CODE	
Do NOT SCALE	A	

THE CONTENTS OF THIS DRAWING ARE THE EXCLUSIVE PROPERTY OF THE TECHNICAL MATERIEL CORP. ITS UNAUTHORIZED USE OR REPRODUCTION IN WHOLE OR IN PART IS STRICTLY FORBIDDEN.

REQ'D.	ITEM	PART NUMBER	DESCRIPTION	SYMBOL
3	2	F5109-3	RETAINING RING, STUD	A
3	1	F5110-1	STUD, TURNLOCK	A

F. EATON		LIST OF MATERIAL	
MATERIAL .062 ALUMINUM 5052-H32		THE TECHNICAL MATERIEL CORP. MAMARONECK, NEW YORK	
FINISH 5404 YEL. IRIDITE		TITLE COVER, TOP & BOTTOM	
UNLESS OTHERWISE SPECIFIED DIMENSIONS ARE IN INCHES AND INCLUDE CHEMICALLY APPLIED OR PLATED FINISHES		DRAWN <i>[Signature]</i> DATE 4-29-65	FINAL APPROVAL <i>[Signature]</i> DATE 7/22/65
DECIMALS .X ± .05 .XX ± .01 .XXX ± .05		CHECKED <i>[Signature]</i> DATE 7-22-65	MS4549
FRACTIONS ± 1/64 ANGLES ± 0° 30'		ELECT. DES. <i>[Signature]</i> DATE 7/22/65	Ø
TOLERANCES		MECH. DES. <i>[Signature]</i> DATE 7/22/65	SHEET
			REV. LTR.