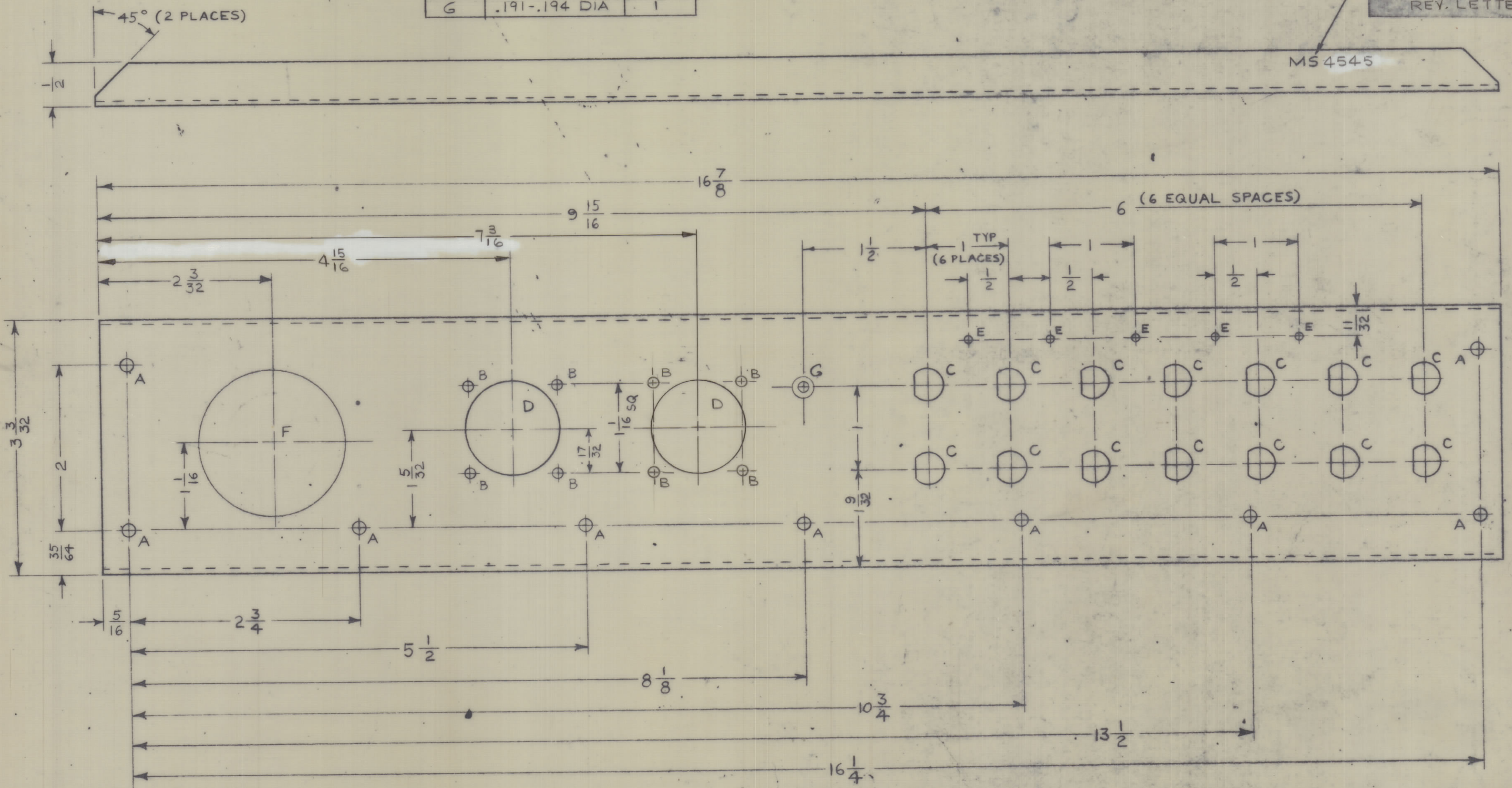


REVISIONS							
ZONE	SYM	DESCRIPTION	DATE	E.M.N. NO.	DRAFT	CHKD	APPD
0		ORIGINAL RELEASE FOR PRODUCTION	4/17/65		JL		

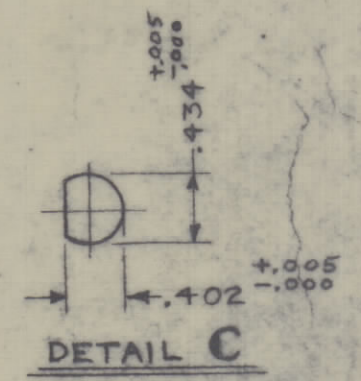
LEGEND		
HOLE	DESCRIPTION	REQD
A	11/64 DIA	9
B	.129 DIA	8
C	SEE DETAIL	14
D	11/16 DIA	2
E	9/64 DIA	5
F	1 3/4 DIA	1
G	.191-.194 DIA	1

METAL STAMP TMC PART NO. 1/8 HIGH GOTHIC. w/LATEST REV. LETTER



MS 4545

- UNLESS OTHERWISE SPECIFIED:
1. USE MATERIAL THICKNESS FOR MAXIMUM RADIUS ON ALL BENDS.
 2. ALL ANGULAR BENDS: 90°.
 3. REMOVE ALL BURRS AND SHARP EDGES.
 4. MOUNT INSERTS AFTER FINISHING.



REF: LD1871

REV'D	ITEM	PART NUMBER	DESCRIPTION	SYMBOL
1	1	NT-129-632-4	NUT, ROUND, SWAGE TYPE	G

AALTONEN		LIST OF MATERIAL	
MATERIAL	.064 ALUMINUM 5052-H32	THE TECHNICAL MATERIEL CORP. MAMARONECK, NEW YORK	
FINISH	S404 - IRIDITE 14 2 AL COM	PANEL, REAR	

QTY	UNIT	MODEL	USER OR CODE	APP'Y. NO.
1		MCGA-1	A	

SCALE	1:1
DECIMALS	2 3/64
FRACTIONS	1/64
TOLERANCES	±.005

DRAWN	DATE	FINAL APPROVAL	DATE
JL	4/27/65	[Signature]	4/29/65

MS 4545

NOTES

THE CONTENTS OF THIS DRAWING ARE THE EXCLUSIVE PROPERTY OF THE TECHNICAL MATERIEL CORP. ITS UNAUTHORIZED USE OR REPRODUCTION IN WHOLE OR IN PART IS STRICTLY PROHIBITED.