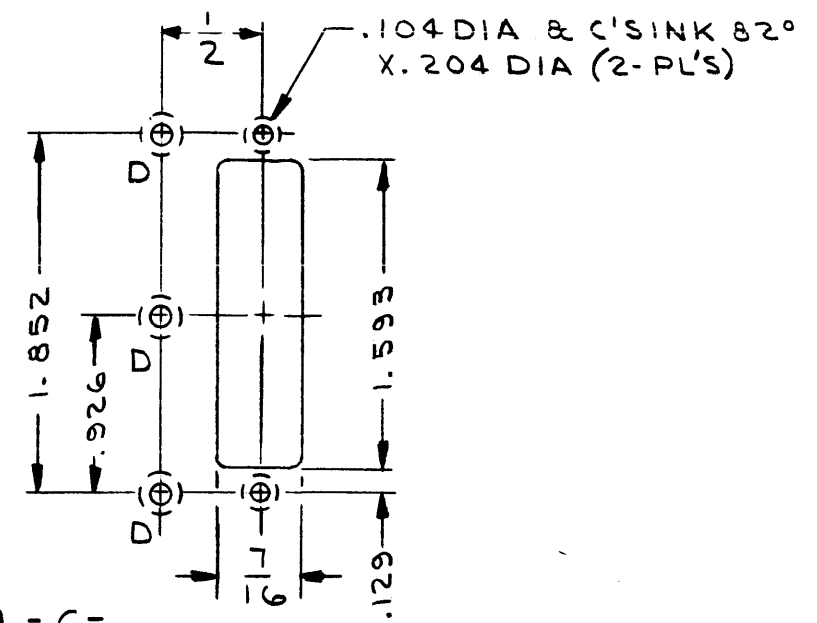
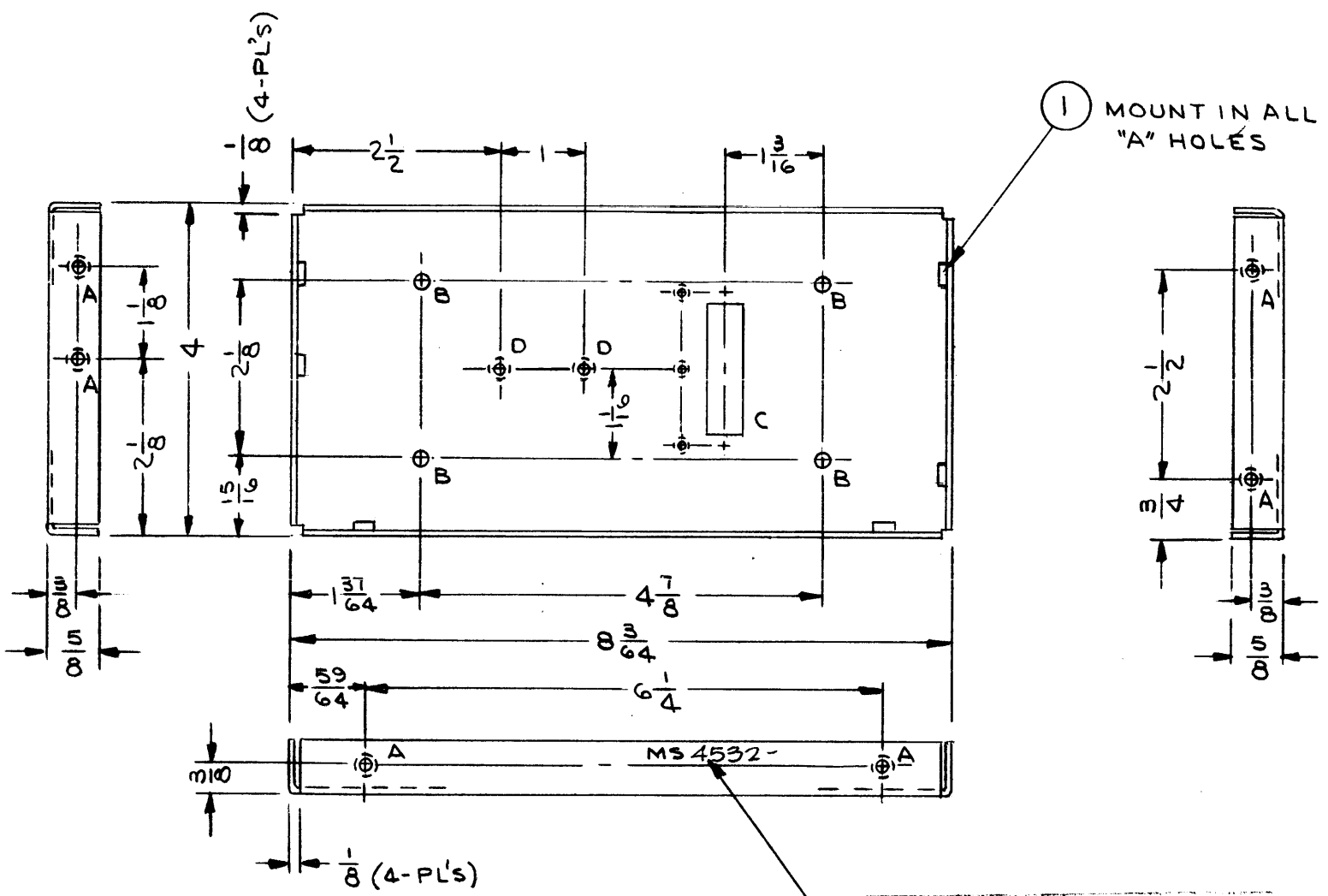


MS4532 A

REVISIONS

SYM	DESCRIPTION	DATE	E.M.N. NO	DRAFT	CHKD
Ø	DRIG. RELEASE FOR PRODUCTION	4/30/65		JL	
A	ADDED "D" HOLES	1/29/66	15590	JL	JCB

HOLE	DESCRIPTION	REQ'D
A	.221-.224 DIA	6
B	13/64 DIA	4
C	SEE DETAIL	1
D	.120 DIA & C'SINK 82° X.230 DIA (FAR SIDE)	5



METAL STAMP TMC PART NO.
1/8 HIGH GOTHIC.W/LATEST REV.
LETTER

- UNLESS OTHERWISE SPECIFIED:
- USE MATERIAL THICKNESS FOR MAXIMUM RADIUS ON ALL BENDS
 - ALL ANGULAR BENDS 90 DEGREES
 - REMOVE ALL BURRS AND SHARP EDGES
 - MOUNT INSERTS AFTER FINISHING

NOTES

Q'TY./UNIT	MODEL USED ON	ASS'Y. NO.
1	LRCB-1	
1	LRCB-1	
SCALE 1/2	CODE	

THE CONTENTS OF THIS DRAWING ARE THE EXCLUSIVE PROPERTY OF THE TECHNICAL MATERIEL CORP. ITS UNAUTHORIZED USE OR REPRODUCTION IN WHOLE OR IN PART IS STRICTLY FORBIDDEN.

REF: LD1878

REQ'D	ITEM	PART NUMBER	DESCRIPTION	SYMBOL
6	1	NT129-832-4	NUT, ROUND, SWAGE TYPE	A

F. EATON		LIST OF MATERIAL	
MATERIAL .081THK ALUMINUM 5052-H32		THE TECHNICAL MATERIEL CORP. MAMARONECK, NEW YORK	
FINISH YELLOW IRIDITE PER S404		TITLE MTG BRACKET, SERVO	
UNLESS OTHERWISE SPECIFIED DIMENSIONS ARE IN INCHES AND INCLUDE CHEMICALLY APPLIED OR PLATED FINISHES		DRAWN J. LESHINSKI	DATE 4/22/65
DECIMALS .X ± .05 .XX ± .01 .XXX ± .005		CHECKED JCB	DATE 4/29/65
FRACTIONS ± 1/64 ANGLES ± 0° 30'		ELECT. DES. JCB	DATE 4/29/65
TOLERANCES		MECH. DES. JCB	DATE 4/29/65
		FINAL APPROVAL F. Eaton	
		DATE 4/30/65	
		MS4532 A	
		SHEET	
		REV. LTR.	