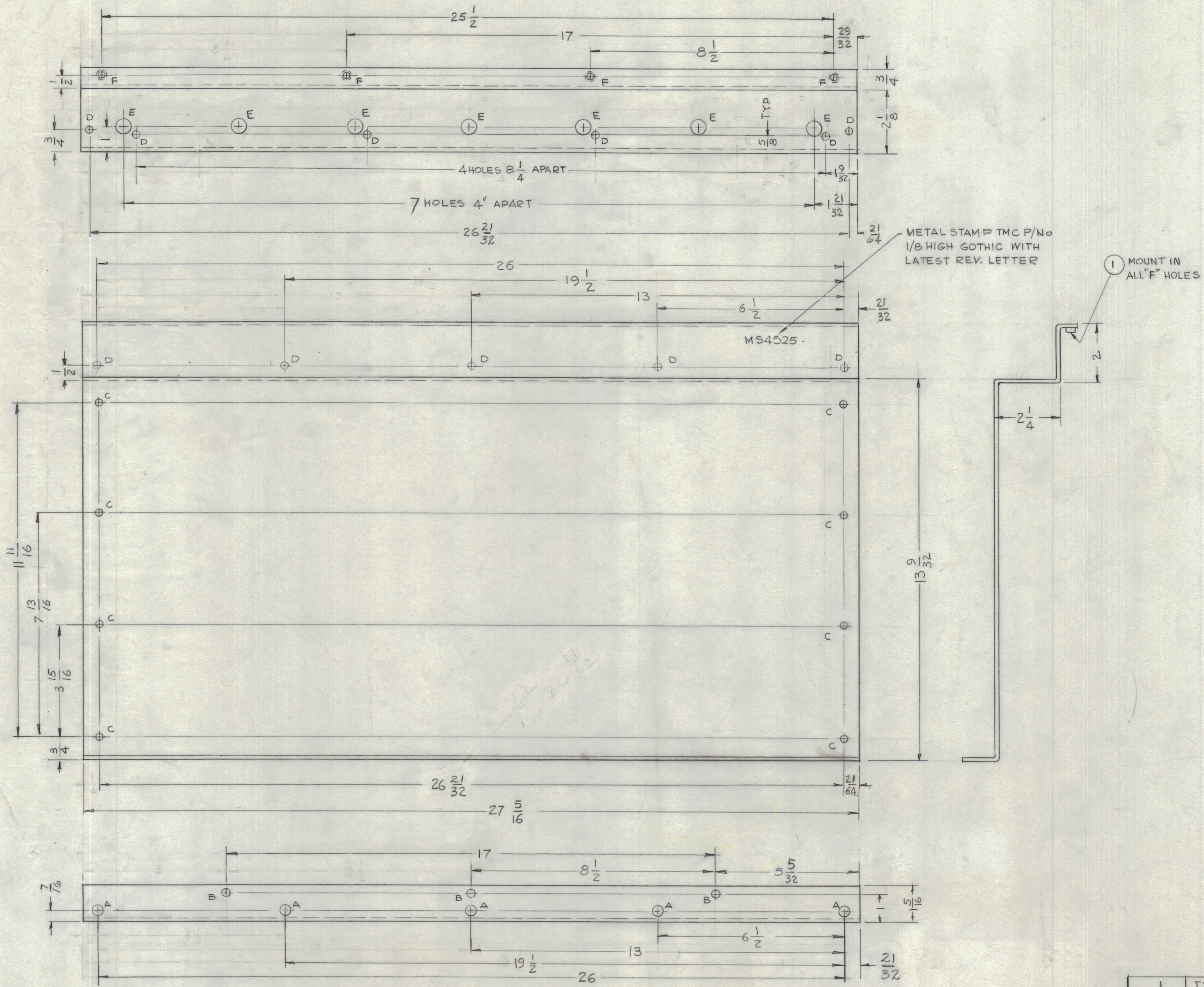


REVISIONS							
ZONE	SYM	DESCRIPTION	DATE	E.M.N. NO.	DRAFT	CHKD	APPD
X1		DIA. 'A' HOLE WAS 5/64	5-14-65	X1	G.D.L.	RG	Q.O.
X2		4 HOLES 8-1/4 APART WERE 8-3/16 APART	8-2-65	X2	RG	RG	Q.O.
Ø		ORIGINAL RELEASE FOR PRODUCTION	9-16-68	Ø	RG	RG	Jde



HOLE	DESCRIPTION	REQ
A	11/64 DIA.	5
B	1/4 DIA	3
C	13/64 DIA	8
D	15/64 DIA	11
E	1/2 DIA	7
F	.224 - .221 DIA.	4

- UNLESS OTHERWISE SPECIFIED:
1. USE MATERIAL THICKNESS FOR MAXIMUM RADIUS ON ALL BENDS
  2. ALL ANGULAR BENDS 90 DEGREES
  3. REMOVE ALL BURRS AND SHARP EDGES
  4. MOUNT INSERTS AFTER FINISHING

MS4525

REQ'D.	ITEM	PART NUMBER	DESCRIPTION	SYMBOL
4	1	NT129-832-5	NUT, PLAIN SPLINE	F

LIST OF MATERIAL			
MATERIAL	1/8 THK ALUMINUM 5052-H32	THE TECHNICAL MATERIEL CORP. MAMARONECK, NEW YORK	
FINISH	Ø404 YEL. IRIDITE	TITLE	TOP-MTG. MODULE CABINET
SCALE	1:2	DRAWN	G.D.L. DATE 12-5-65
MODEL USED ON	TST (110K)	CHECKED	RG DATE 9-16-68
CODE	A	ELECT. DES.	RG DATE 9-16-68
ABS.Y. NO.		MECH. DES.	RG DATE 9-16-68
THE CONTENTS OF THIS DRAWING ARE THE EXCLUSIVE PROPERTY OF THE TECHNICAL MATERIEL CORP. ITS UNAUTHORIZED USE OR REPRODUCTION IN WHOLE OR IN PART IS STRICTLY FORBIDDEN.		DECIMALS	± .005
		FRACTIONS	± 1/64
		ANGLES	± 0° 30'

NOTES