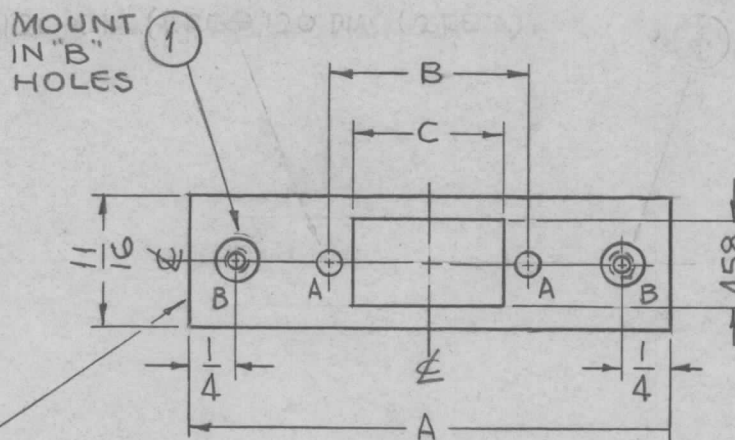


TMC P/N	A	B	C	REQ
MS 4518 -1	2-3/4	.984	.787	
MS 4518 -2	3-1/8	1.312	1.115	
MS 4518 -3	3-5/8	1.852	1.654	
MS 4518 -4	4-1/4	2.500	2.302	

REQ. PER UNIT	USED ON		MS4518	Ø
	MODEL	ASS'Y. NO.		
	TSTE-10K		4-15-65	

HOLES:
 A ~ .120 DIA. (2 REQ.)
 B ~ .161-.164 DIA. (2 REQ.)



MARK STAMP
 TMC PART NO.
 (MS4518-) 1/8
 HIGH GOTHIC
 W/LATEST REV.
 LETTER.

SYM	DESCRIPTION	DATE	CH. NO.	DRAFTS	CHECKER	ENG. APP.	REQ. ITEM	PART NO.	BUDETTI DESCRIPTION	SYMBOL			
							2	1	NT129-440-3	NUT, PLAIN, SPLINE	B		
									.064 THICK	THE TECHNICAL MATERIEL CORP. MAMARONECK, NEW YORK			
									STOCK SIZE				
									ALUMINUM	PLATE, CONNECTOR MTG.			
									MATERIAL				
									5052-H32	SRG	6/27/66		
									TYPE & TEMPER	HEAT TREAT. SPEC.	DRAWN	CHECKED	FINAL APPROVAL
									S404 YEL. IRIDITE	00-6-27-66			
									FINISH & SPEC. NO.	ELEC. DES. APP.	MECH. DES. APP.	MS4518	Ø