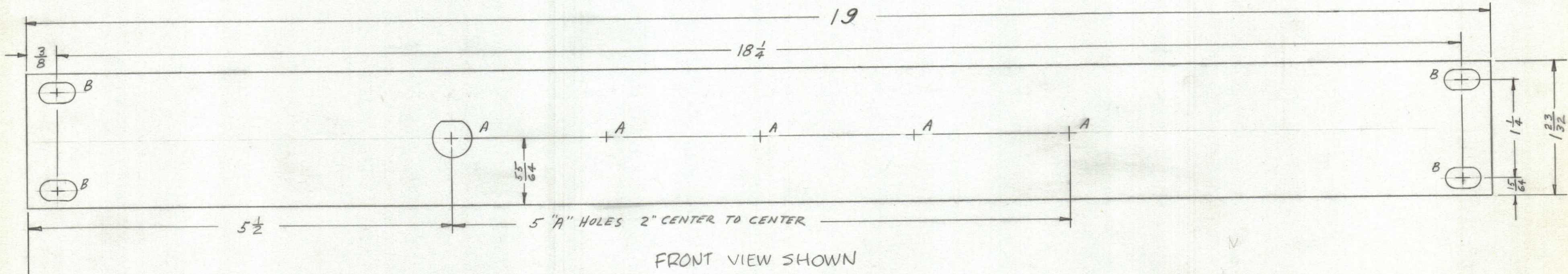


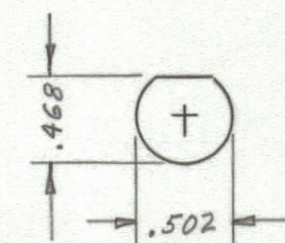
| REVISIONS |     |                                 |         |            |      |
|-----------|-----|---------------------------------|---------|------------|------|
| ZONE      | SYM | DESCRIPTION                     | DATE    | E.M.N. NO. | APPD |
|           | Ø   | ORIGINAL RELEASE FOR PRODUCTION | 5/17/66 | Ø          | CV   |



FRONT VIEW SHOWN

A' DETAIL

METAL STAMP TMC PART NO. 1/8  
HIGH GOTHIC ON REAR OF PANEL  
W/LATEST REVISION LETTER



"A" DETAIL 5 REQ.

"B" - 1/4 x 29/64 SLOT 4 REQ.

B' DET

**FINISH NOTES:**

- S404 - IRIDITE 14-2 AL-COAT.
- S114 - ZINC CHROMATE PRIMER) FRONT AND
- S115 - SMOOTH GRAY ENAMEL ) EDGES ONLY

**MACHINING:**

- MILL ALL EDGES.
- HOLES MUST BE DRILLED, UNLESS OTHERWISE SPECIFIED.
- LATERAL BOW OF PANEL MUST BE KEPT TO .031 TOLERANCE.
- PANEL MUST BE FREE OF ALL MACHINING MARKS, GOUGES AND SCRATCHES. IF NECESSARY, SAND FRONT OF PANEL WITH NO. 120 GRIT SANDPAPER.

**NOTES**

|          |               |            |
|----------|---------------|------------|
| QTY/UNIT | MODEL USED ON | ASS'Y. NO. |
| 1        | TSTE10K/AX563 | AX 570     |
| SCALE    | CODE          |            |

REF: LD 1852

| REQ'D.                 | ITEM | PART NUMBER                  | DESCRIPTION | SYMBOL |
|------------------------|------|------------------------------|-------------|--------|
| B.NAP LIST OF MATERIAL |      |                              |             |        |
| MATERIAL               |      | THE TECHNICAL MATERIEL CORP. |             |        |
| 3/16 ALUMINUM          |      | MAMARONECK, NEW YORK         |             |        |
| 2024-T3                |      | TITLE                        |             |        |
| FINISH                 |      | PANEL FRONT                  |             |        |
| SEE NOTES              |      | DRAWN                        |             |        |
|                        |      | DATE                         |             |        |
|                        |      | CHECKED                      |             |        |
|                        |      | DATE                         |             |        |
|                        |      | ELECT. DES.                  |             |        |
|                        |      | DATE                         |             |        |
|                        |      | MECH. DES.                   |             |        |
|                        |      | DATE                         |             |        |
|                        |      | SHEET                        |             |        |
|                        |      | REV. LTR.                    |             |        |

THE CONTENTS OF THIS DRAWING ARE THE EXCLUSIVE PROPERTY OF THE TECHNICAL MATERIEL CORP. ITS UNAUTHORIZED USE OR REPRODUCTION IN WHOLE OR IN PART IS STRICTLY FORBIDDEN.

DECIMALS .X ± .05 .XX ± .01 .XXX ± .005

FRACTIONS ± 1/64 ANGLES ± 0° 30'

TOLERANCES

UNLESS OTHERWISE SPECIFIED DIMENSIONS ARE IN INCHES AND INCLUDE CHEMICALLY APPLIED OR PLATED FINISHES

MS 4500