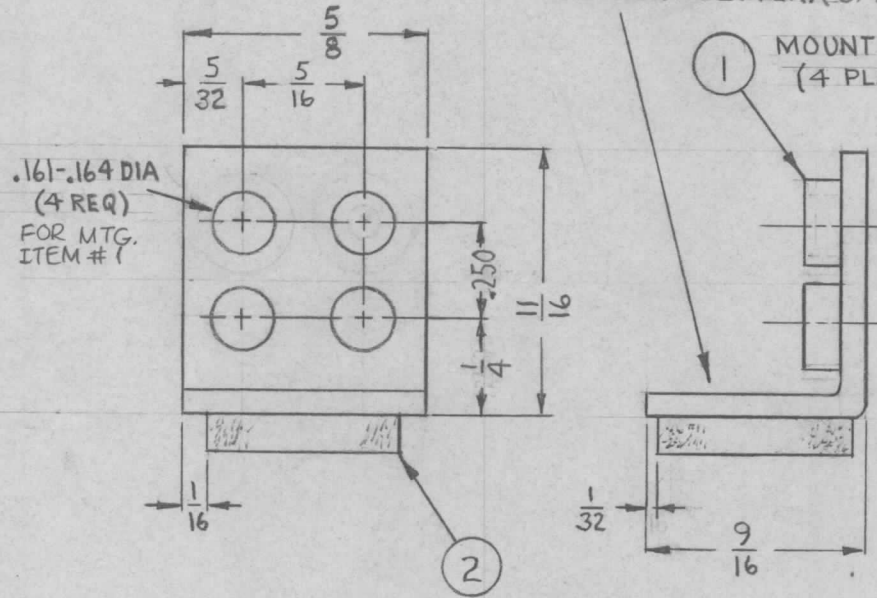


REQ. PER UNIT	USED ON		MS4401	Ø
	MODEL	ASS'Y. NO.		
	TTRT		3-11-65	
	TTRR		3-11-65	

METAL STAMP TMC  
PART NO. WITH LATEST  
REVISION LETTER. (3/32 HIGH GOTHIC)



UNLESS OTHERWISE SPECIFIED:

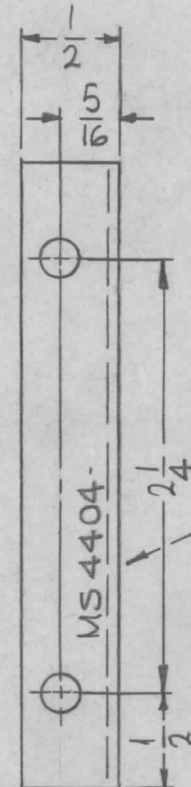
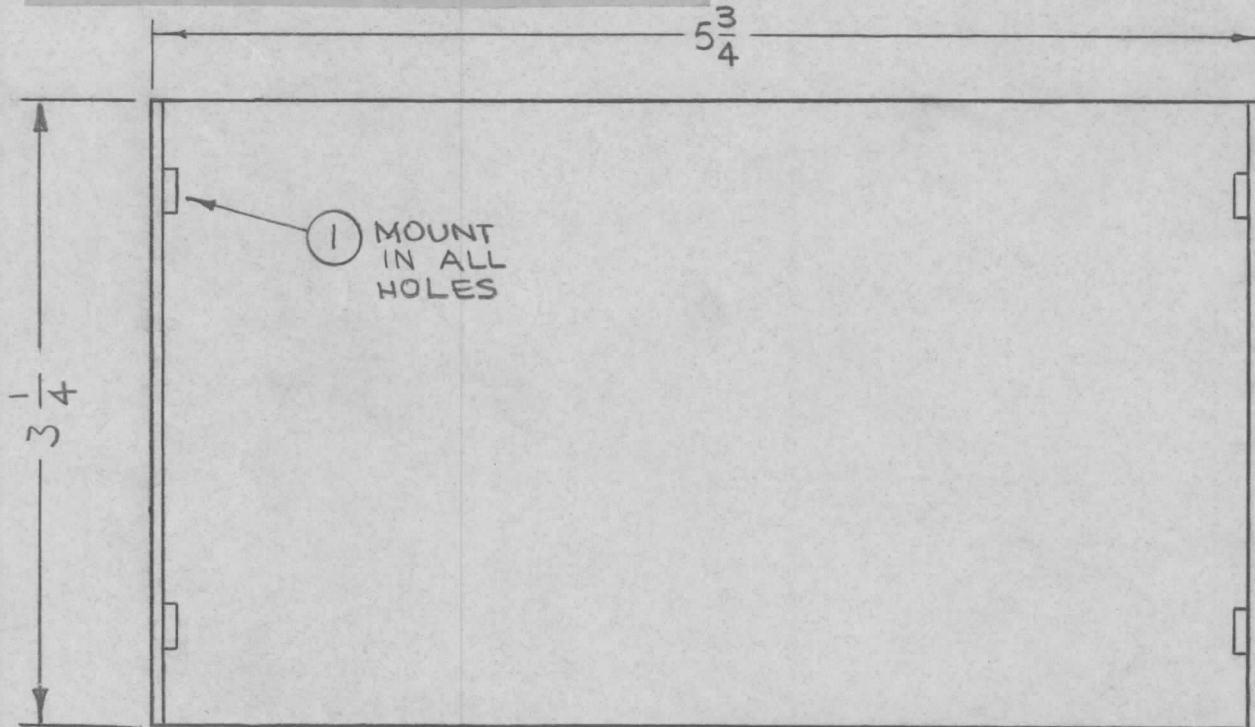
1. USE MATERIAL THICKNESS FOR MAXIMUM RADIUS ON ALL BENDS
2. ALL ANGULAR BENDS 90 DEGREES
3. REMOVE ALL BURRS AND SHARP EDGES
4. MOUNT INSERTS AFTER FINISHING

	2	TAMI-2-4-1-G	TAPE, URETHANE						
	4	NT129-440-4	NUT, PLAIN, SPLINE						
REQ. ITEM	PART NO.		DESCRIPTION		SYMBOL				
	.064 THK.		THE TECHNICAL MATERIEL CORP.						
	STOCK SIZE		MAMARONECK. NEW YORK						
Ø	ORIGINAL RELEASE FOR PRODUCTION		BRACKET, RETAINING						
SYM	DESCRIPTION	DATE	CH. NO.	DRAFTS	CHECKER	ENG. APP.			
		3-12-65	AA	2					
UNLESS OTHERWISE SPECIFIED DIMENSIONS ARE IN INCHES AND INCLUDE CHEMICALLY APPLIED OR PLATED FINISHES		SCALE 2:1							
DECIMALS	FRACTIONS	CODE	5052-H32			2d.	90%	RDE	
.X ± .05	± 1/64	A	S404 YELLOW IRIDIOTE						
.XX ± .01	ANGLES		FINISH & SPEC. NO.			ELEC. DES. APP.	MECH. DES. APP.	MS4401	Ø
.XXX ± .005	± 0° 30'								

UNLESS OTHERWISE SPECIFIED:

1. USE MATERIAL THICKNESS FOR MAXIMUM RADIUS ON ALL BENDS
2. ALL ANGULAR BENDS 90 DEGREES
3. REMOVE ALL BURRS AND SHARP EDGES
4. MOUNT INSERTS AFTER FINISHING

REQ. PER UNIT	USED ON			MS4404	A
	MODEL	ASS'Y. NO.	DATE		
1	KMCU-1		3-12-65		



HOLES;  
.191-.194 DIA. (4REQ)

METAL STAMP  
TMC PART NO,  
1/8 HIGH GOTHIC  
W/LATEST REV.  
LETTER.

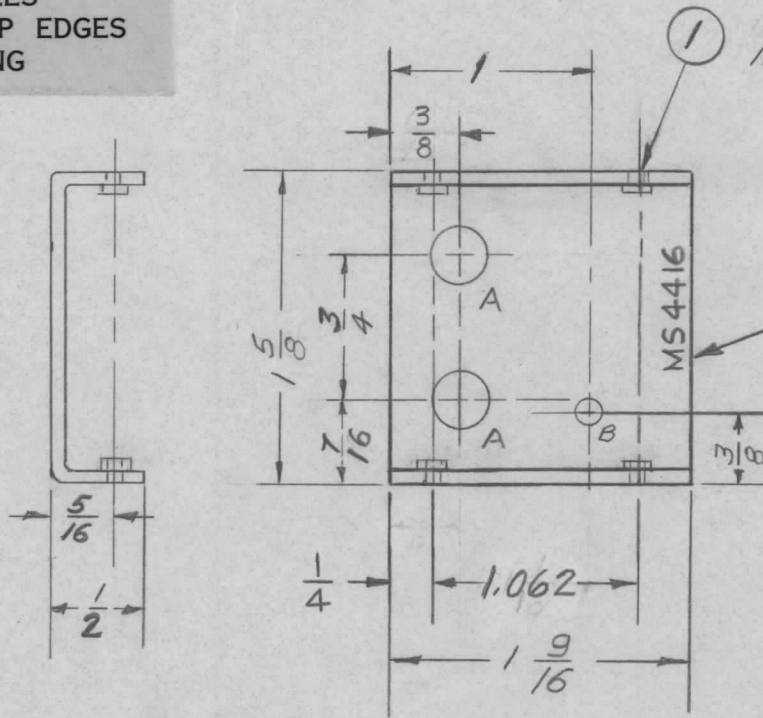
OPPOSITE  
SIDE SAME

							4	1	NT 129-632-4	NUT, PLAIN SPLINE	
							REQ. ITEM	PART NO.		F. BUDETTI DESCRIPTION	SYMBOL
A	DIM. 3 1/4 ADDED		5-5-65	14024	9L	JCS	.064 THICK		THE TECHNICAL MATERIEL CORP. MAMARONECK, NEW YORK		
Ø	ORIGINAL RELEASE FOR PRODUCTION		3-31-65	Ø	8L		STOCK SIZE				
X1	COMPLETELY REVISED		3-12-65	X1	SRG		ALUMINUM		BRACKET, STIFFENER		
SYM	DESCRIPTION		DATE	CH. NO.	DRAFTS	CHECKER	MATERIAL				
UNLESS OTHERWISE SPECIFIED DIMENSIONS ARE IN INCHES AND INCLUDE CHEMICALLY APPLIED OR PLATED FINISHES			SCALE		1:1		5052-H32	SRG	J.S.	ØØ	
DECIMALS .X ± .05 .XX ± .01 .XXX ± .005			FRACTIONS ± 1/64 ANGLES ± 0° 30'		CODE A		TYPE & TEMPER S404 YEL. IRIDITE		DRAWN ELEC. DES. APP.		
TOLERANCES							HEAT TREAT. SPEC.		CHECKED MECH. DES. APP.		
							FINISH & SPEC. NO.		MS4404 A		

UNLESS OTHERWISE SPECIFIED:

1. USE MATERIAL THICKNESS FOR MAXIMUM RADIUS ON ALL BENDS
2. ALL ANGULAR BENDS 90 DEGREES
3. REMOVE ALL BURRS AND SHARP EDGES
4. MOUNT INSERTS AFTER FINISHING

REQ. PER UNIT	USED ON		MS4416 $\emptyset$
	MODEL	ASS'Y. NO.	
	AFCR-3		3-23-65



MOUNT IN ALL C HOLES AS SHOWN

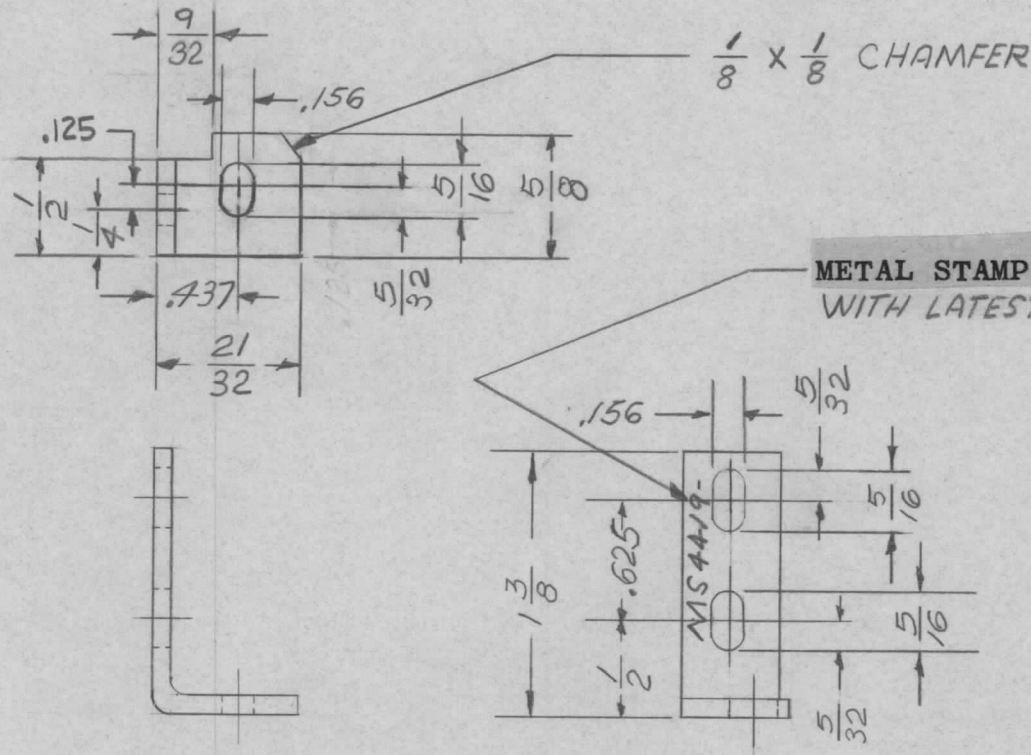
METAL STAMP TMC PART NO.  
1/8 HIGH GOTHIC.  
WITH LATEST REV. LETTER

HOLE LEGEND		
HOLE	DESCRIPTION	REQ
A	17/64 DIA	2
B	1/8 DIA.	1
C	.161-.164 DIA.	4

4	1	NT129-440-4	NUT ROUND, SWAGE TYPE	C
REQ. ITEM	PART NO.		DESCRIPTION	SYMBOL
	.062 THK.		THE TECHNICAL MATERIEL CORP. MAMARONECK, NEW YORK	BRACKET,
	STOCK SIZE			
	ALUMINUM			
	MATERIAL			
	5052 H32		C. LANZA	
	TYPE & TEMPER	HEAT TREAT. SPEC.	DRAWN	CHECKED
	S404 YEL. IRIDITE			
	FINISH & SPEC. NO.	ELEC. DES. APP.	MECH. DES. APP.	
				MS4416 $\emptyset$

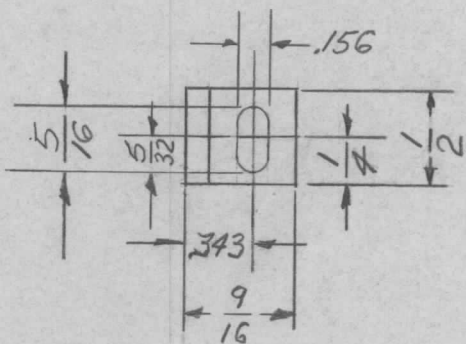
$\emptyset$	ORIGINAL RELEASE FOR PRODUCTION	3-26-65	$\emptyset$	22		
X	EXP. RELEASE	3-23-65	1	CL		
SYM	DESCRIPTION	DATE	CH. NO.	DRAFTS	CHECKER	ENG. APP.
UNLESS OTHERWISE SPECIFIED DIMENSIONS ARE IN INCHES AND INCLUDE CHEMICALLY APPLIED OR PLATED FINISHES		SCALE FULL				
DECIMALS .X $\pm$ .05 .XX $\pm$ .01 .XXX $\pm$ .005	TOLERANCES	FRACTIONS $\pm$ 1/64 ANGLES $\pm$ 0° 30'	CODE			

REQ. PER UNIT	USED ON			MS4419	A
	MODEL	ASS'Y. NO.	DATE		
1	AFCR-3		3/24/65		

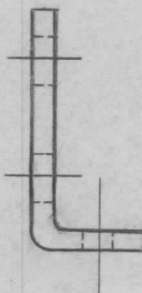
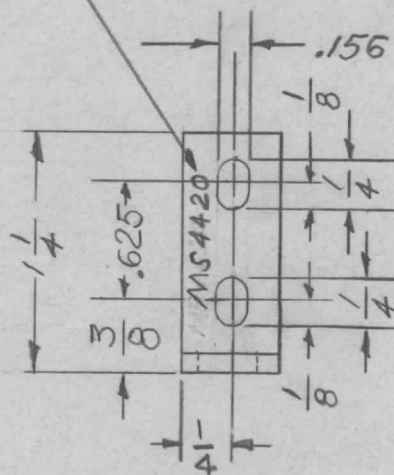


8	METAL STAMP WAS 1/8	10-25-65	14975	REV.	gto	file	REQ. ITEM	PART NO.	DESCRIPTION	SYMBOL	
0	ORIGINAL RELEASE FOR	3-26-65	0	g.			.090	THE TECHNICAL MATERIEL CORP.			
	IDENTIFICATION FITS						STOCK SIZE	MAMARONECK.			
XI	1/8 X 1/8 CHAMFER ADDED	3-24-65	CLANZA	PH			ALUMINUM	NEW YORK			
X	EXP. RELEASE	3/24/65	CLANZA	PH				BRACKET,			
SYM	DESCRIPTION	DATE	CH. NO.	DRAFTS	CHECKER	ENG. APP.	MATERIAL				
UNLESS OTHERWISE SPECIFIED DIMENSIONS ARE IN INCHES AND INCLUDE CHEMICALLY APPLIED OR PLATED FINISHES		SCALE		FULL			5052-H-32	C.LANZA	PH	PH	
DECIMALS .X ± .05 .XX ± .01 .XXX ± .005		FRACTIONS ± 1/64 ANGLES ± 0° 30'		CODE			TYPE & TEMPER	HEAT TREAT. SPEC.	DRAWN	CHECKED	FINAL APPROVAL
TOLERANCES							S404 YEL. IRIDITE		PH	PH	
							FINISH & SPEC. NO.	ELEC. DES. APP.	MECH. DES. APP.	MS4419 A	

REQ. PER UNIT	USED ON			MS 4420 Ø
	MODEL	ASS'Y. NO.	DATE	
2	AFCR-3		3/24/65	

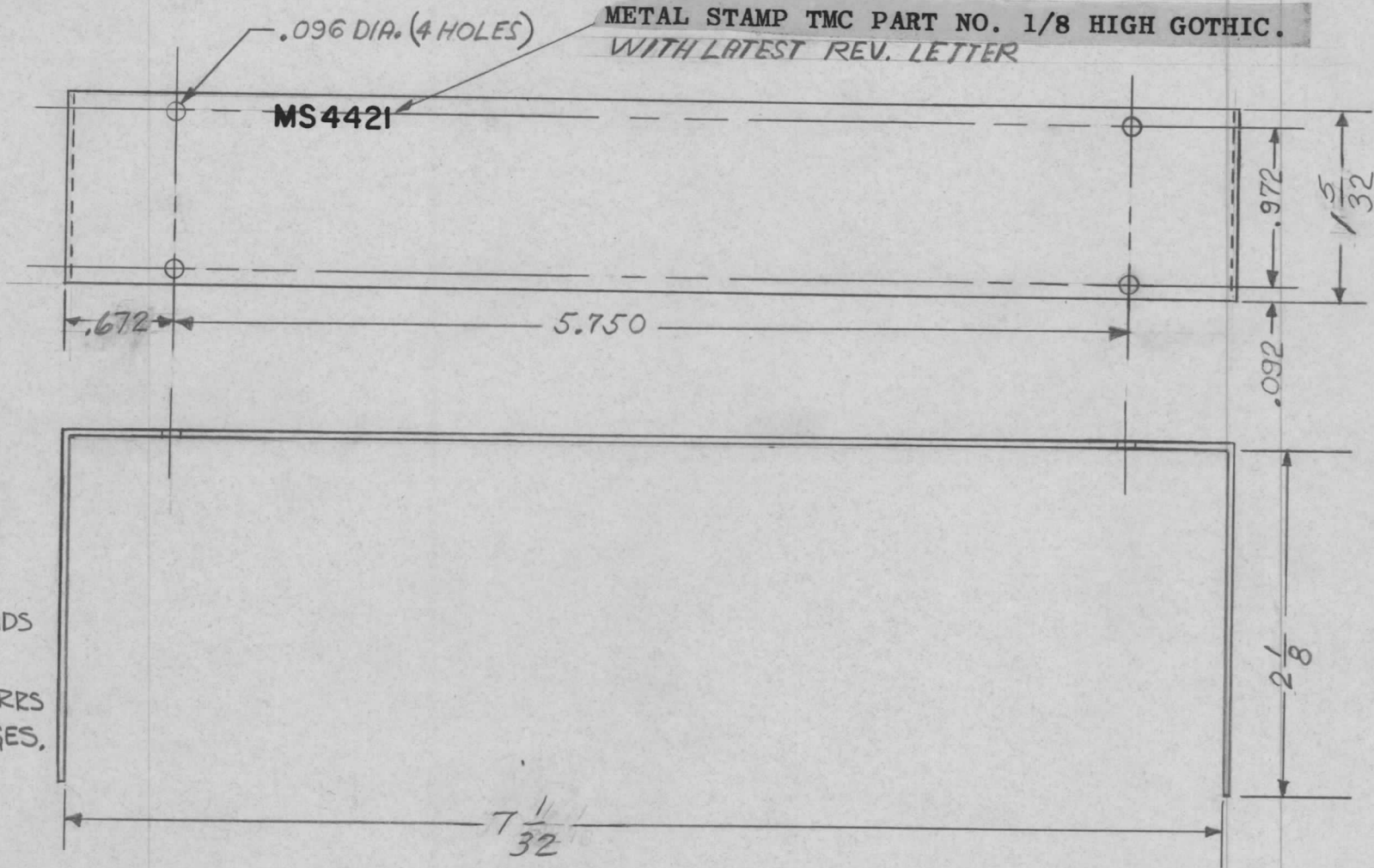


METAL STAMP TMC PART NO. 1/8 HIGH GOTHIC.  
WITH LATEST REV. LETTER AS SHOWN



REQ.	ITEM	PART NO.	DESCRIPTION				SYMBOL	
Ø		.090	THE TECHNICAL MATERIEL CORP.					
		STOCK SIZE	MAMARONECK, NEW YORK					
X		ALUMINUM	BRACKET,					
		MATERIAL						
SYM	DESCRIPTION	DATE	CH. NO.	DRAFTS	CHECKER	ENG. APP.		
	UNLESS OTHERWISE SPECIFIED DIMENSIONS ARE IN INCHES AND INCLUDE CHEMICALLY APPLIED OR PLATED FINISHES	SCALE	FULL					
	DECIMALS .X ± .05 .XX ± .01 .XXX ± .005	TOLERANCES	FRACTIONS ± 1/64 ANGLES ± 0° 30'	CODE				
		5052 H-32			C. LANZA			
		TYPE & TEMPER	HEAT TREAT. SPEC.	DRAWN	CHECKED	FINAL APPROVAL		
		S404 VEL. IRIDITE						
		FINISH & SPEC. NO.	ELEC. DES. APP.	MECH. DES. APP.	MS 4420 Ø			

REQ. PER UNIT	USED ON			MS4421	Ø
	MODEL	ASS'Y. NO.	DATE		
	AFCR-3		3/22/65		

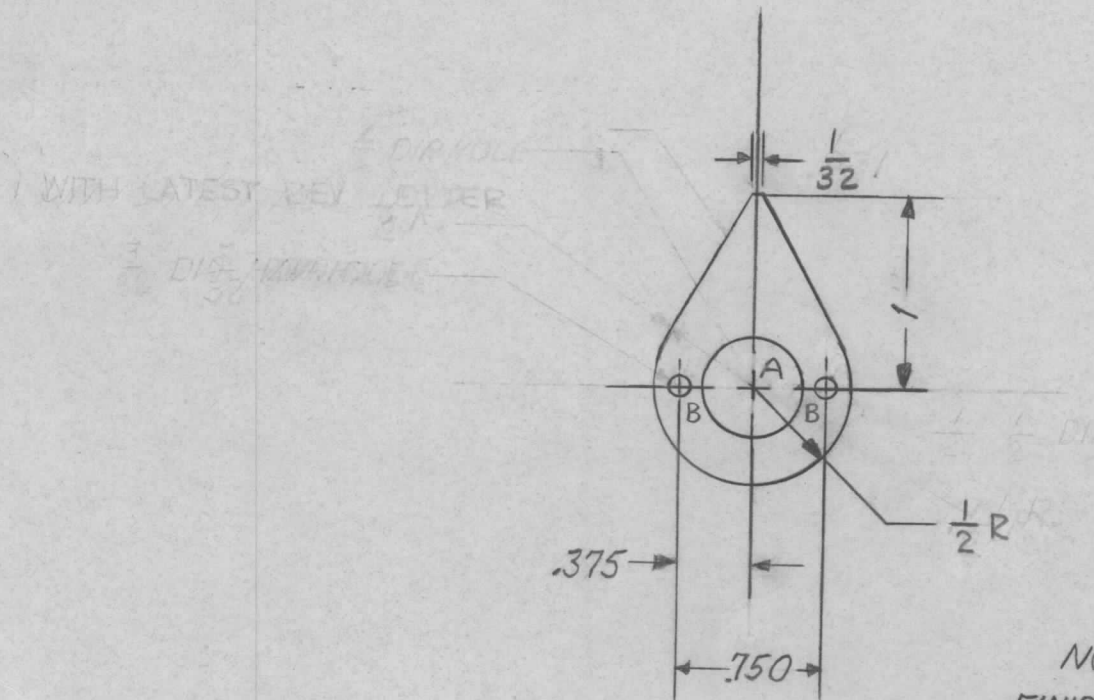


UNLESS OTHERWISE SPECIFIED:

1. USE MAT. THKNSS FOR MAX RADIUS ON ALL BENDS.
2. ALL ANGULAR BENDS 90° DEGREES.
3. REMOVE ALL BURRS AND SHARP EDGES.

REQ. ITEM	PART NO.	DESCRIPTION				SYMBOL
Ø	Ø 92	THE TECHNICAL MATERIEL CORP. MAMARONECK, NEW YORK				Ø
X	CL	COVER,				
SYM	DESCRIPTION	DATE	CH. NO.	DRAFTS	CHECKER	ENG. APP.
UNLESS OTHERWISE SPECIFIED DIMENSIONS ARE IN INCHES AND INCLUDE CHEMICALLY APPLIED OR PLATED FINISHES		SCALE FULL				
DECIMALS	FRACTIONS	CODE				
.X ± .05	± 1/64					
.XX ± .01	ANGLES					
.XXX ± .005	± 0° 30'					
TOLERANCES						
		5052 H32		CLANZA	Ø	Ø
		TYPE & TEMPER	HEAT TREAT. SPEC.	DRAWN	CHECKED	FINAL APPROVAL
		S404 YEL. IRIDITE			Ø	MS4421 Ø
		FINISH & SPEC. NO.	ELEC. DES. APP.	MECH. DES. APP.		

REQ. PER UNIT	USED ON			MS4422 $\phi$
	MODEL	ASS'Y. NO.	DATE	
1	AFCR-3		3/22/65	



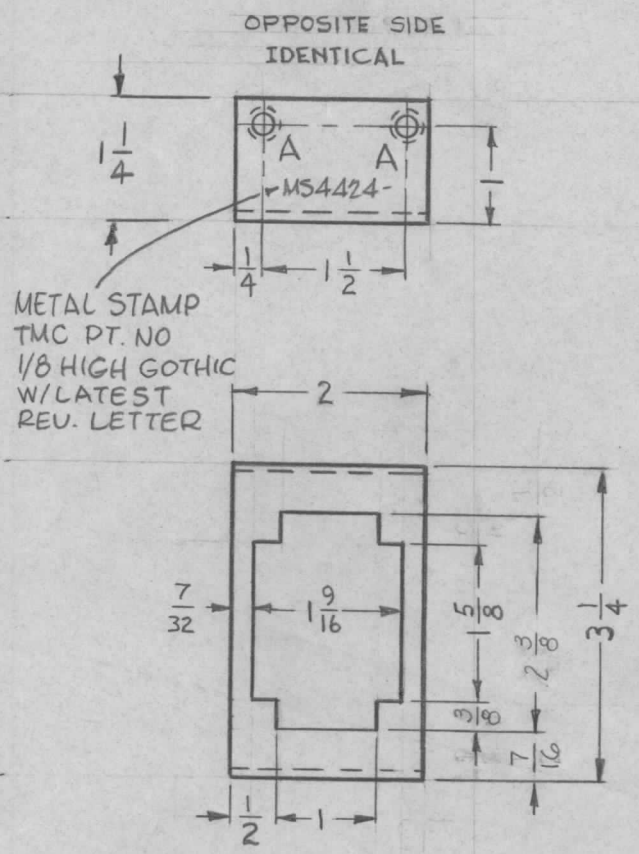
HOLE	DESCRIPTION	REQ'D
A	1/2 DIA	1
B	3/32 DIA	2

NOTE:  
FINISH - ALL OVER LUSTERLESS WHITE  
NO. 37875 PER FED STD. 595

SYM	DESCRIPTION	DATE	CH. NO.	DRAFTS	CHECKER	ENG. APP.	REQ. ITEM	PART NO.	DESCRIPTION	SYMBOL	
$\phi$	ORIGINAL RELEASE FOR PRODUCTION	3-24-65	2	Ru	RL		.040 THK STOCK SIZE		THE TECHNICAL MATERIEL CORP. MAMARONECK, NEW YORK	$\phi$	
X	EXP. RELEASE	3-22-65	1	CL	RL		ALUMINUM				
							MATERIAL				
	UNLESS OTHERWISE SPECIFIED DIMENSIONS ARE IN INCHES AND INCLUDE CHEMICALLY APPLIED OR PLATED FINISHES	SCALE		FULL			5052 H32	C. LANZA	<i>[Signature]</i>	<i>[Signature]</i>	
	DECIMALS .X $\pm$ .05 .XX $\pm$ .01 .XXX $\pm$ .005	FRACTIONS $\pm$ 1/64 ANGLES $\pm$ 0° 30'	CODE				TYPE & TEMPER	HEAT TREAT. SPEC.	DRAWN	CHECKED	FINAL APPROVAL
	TOLERANCES						SEE NOTE			<i>[Signature]</i>	MS4422 $\phi$
							FINISH & SPEC. NO.	ELEC. DES. APP.	MECH. DES. APP.		

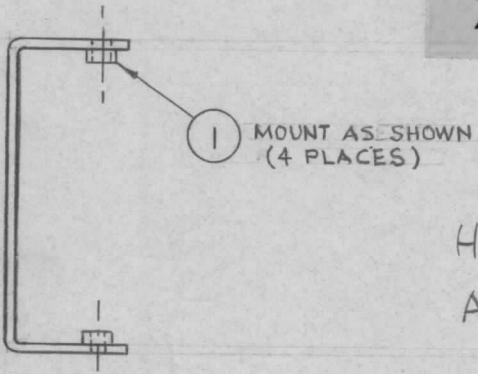
REQ. PER UNIT	USED ON		
	MODEL	ASS'Y. NO.	DATE
1	GPT-10K	AX 506	3/10/65
1	GPT-10K	AX 507	3/10/65
1	GPT-10K	AX 508	3/10/65
1	GPT-10K	AX 558	3/10/65
1	TSTE		3/10/65

MS4424 C



UNLESS OTHERWISE SPECIFIED:

1. USE MATERIAL THICKNESS FOR MAXIMUM RADIUS ON ALL BENDS
2. ALL ANGULAR BENDS 90 DEGREES
3. REMOVE ALL BURRS AND SHARP EDGES
4. MOUNT INSERTS AFTER FINISHING



HOLES REQ.  
A: .191-.194 DIA. 4

SYM	DESCRIPTION	DATE	CH. NO.	DRAFTS	CHECKER	ENG. APP.	REQ.	ITEM	PART NO.	DESCRIPTION	SYMBOL	
C	STOCK SIZE WAS .054 THK	7.5.66	16500	G.D.L.	JCB	JCB	4	1	NT129-632-3	NUT, ROUND, SWAGE TYPE	A	
B	2 3/8 WAS 2 1/8, 3/8 WAS 5/16, 7/16 WAS 1/2	3/7/66	15916	WFW	JCB	JCB				THE TECHNICAL MATERIEL CORP. MAMARONECK, NEW YORK		
A	1/4 DIM. ADDED - 5404 MS 5104	7/8/65	14414	D.V.V.	JCB	JCB			.051 THK.			
Ø	ORIGINAL RELEASE FOR PRODUCTION	3.11.65	Ø	J.F.					STOCK SIZE			
									ALUMINUM IRIDITE		BRACKET, SHIELD, MTG.	
									MATERIAL			
									5052-H32			
									TYPE & TEMPER	HEAT TREAT. SPEC.		
									5404-IRIDITE, 14-2 AL-COAT			
									FINISH & SPEC. NO.	ELEC. DES. APP.	MECH. DES. APP.	
											MS4424 C	

UNLESS OTHERWISE SPECIFIED DIMENSIONS ARE IN INCHES AND INCLUDE CHEMICALLY APPLIED OR PLATED FINISHES

TOLERANCES

DECIMALS  
.X ± .05  
.XX ± .01  
.XXX ± .005

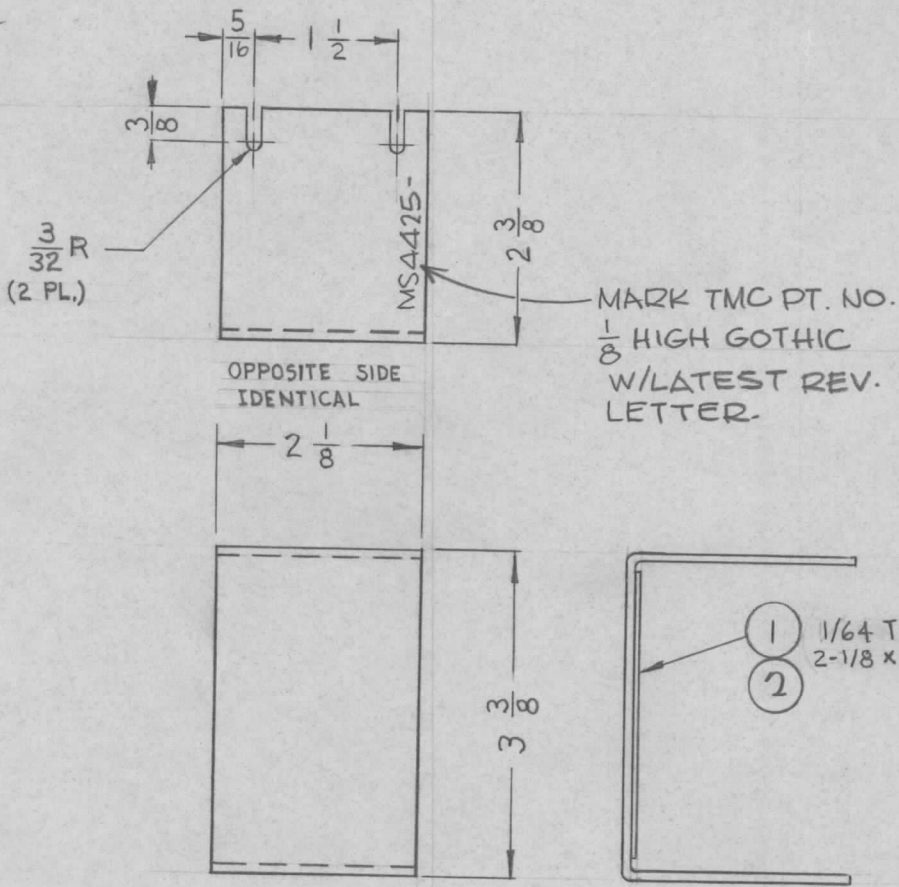
FRACTIONS  
± 1/64  
ANGLES  
± 0° 30'

CODE



REQ. PER UNIT	USED ON		
	MODEL	ASS'Y. NO.	DATE
1	GPT-10K	AX 506	3/10/65
1	GPT-10K	AX 507	3/10/65
1	GPT-10K	AX 508	3/10/65
1	GPT-10K	AX 558	3/10/65
1	TSTE		3/10/65

MS4425 A

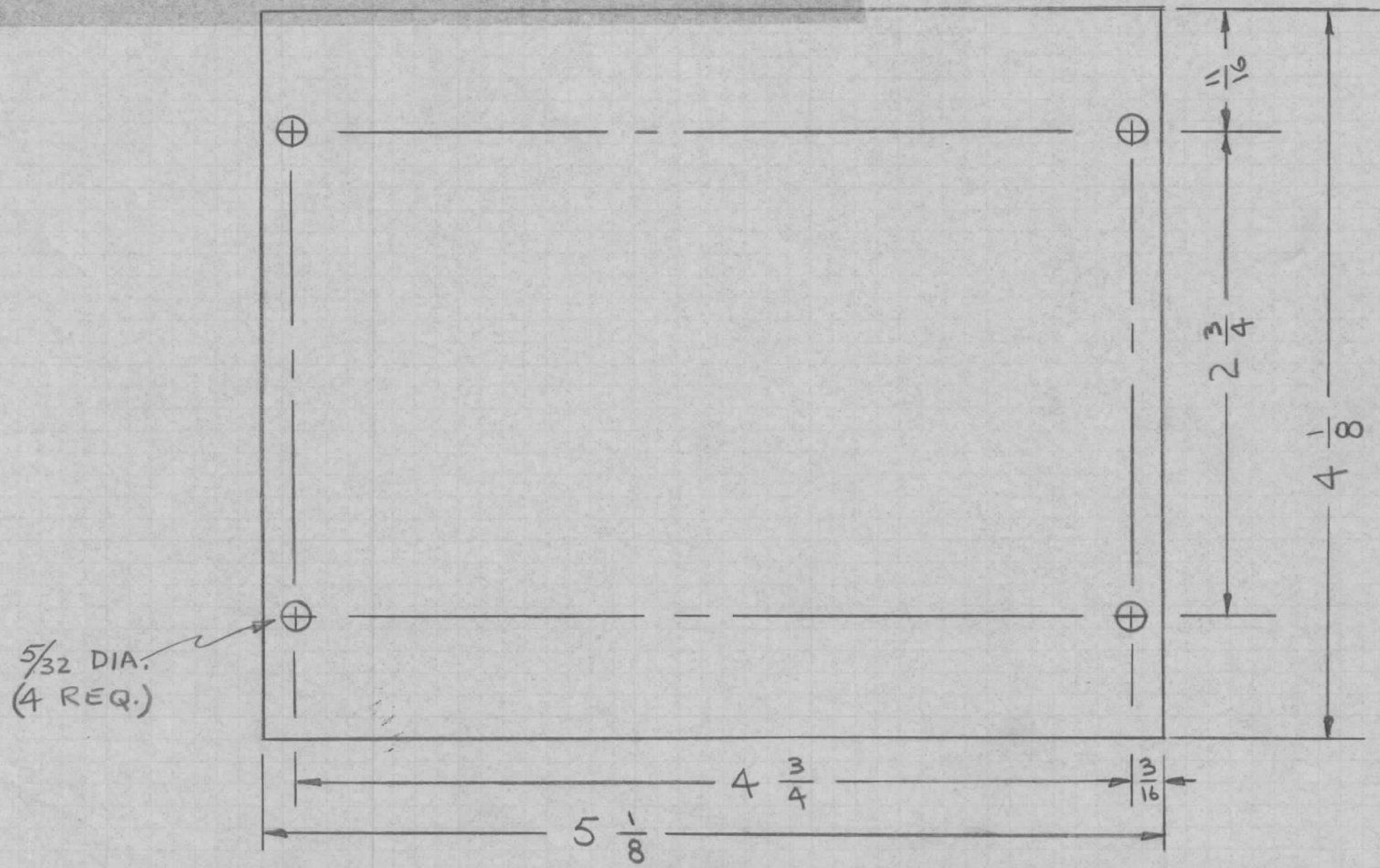


- UNLESS OTHERWISE SPECIFIED:
1. USE MATERIAL THICKNESS FOR MAXIMUM RADIUS ON ALL BENDS
  2. ALL ANGULAR BENDS 90 DEGREES
  3. REMOVE ALL BURRS AND SHARP EDGES

2	GL102	ADHESIVE, Q. MAX	
1	IM179-16	FISH PAPER	
REQ. ITEM	PART NO.	BUDETTI DESCRIPTION	SYMBOL
.054 THK.		THE TECHNICAL MATERIEL CORP.	
STOCK SIZE		MAMARONECK, NEW YORK	
ALUM ALUMINUM.		SHIELD, ELECTRICAL, PROTECTIVE	
MATERIAL		GPT.-10K (AUX. FR.)	
5052-H32		DRWN	CHEKED
TYPE & TEMPER	HEAT TREAT. SPEC.	FINAL APPROVAL	
S404-IRIDITE, 14-2 ALCOAT			
FINISH & SPEC. NO.	ELEC. DES. APP.	MECH. DES. APP.	MS4425 A

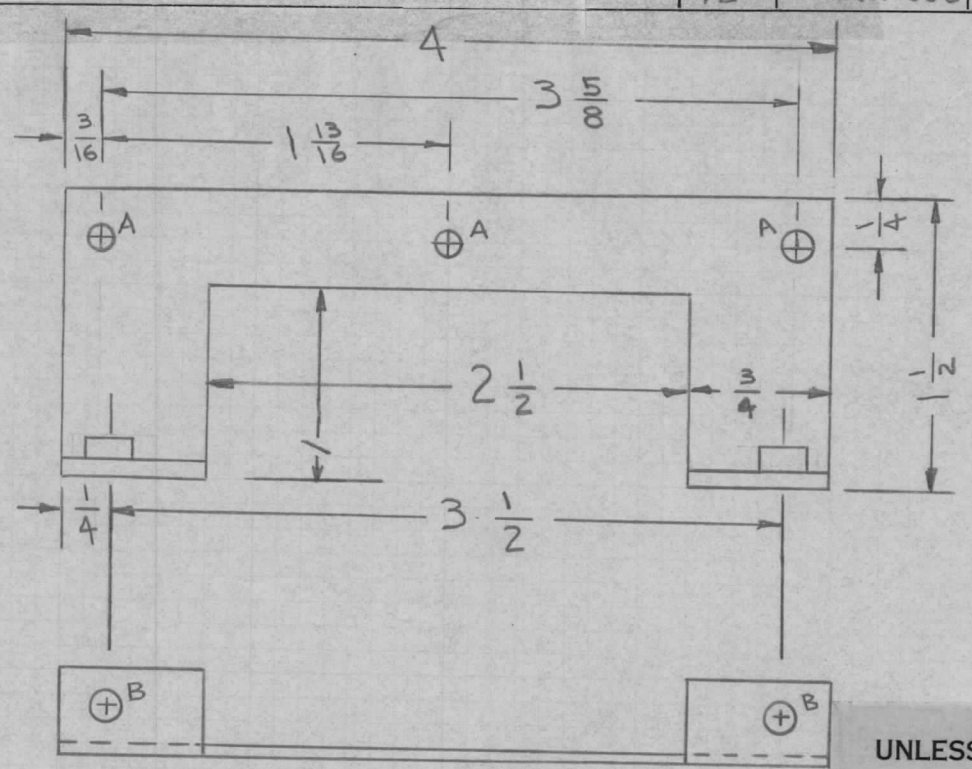
A	IT. 2 ADDED, ADD TMC PT. NO.	3-16-67	17979	MS	PL	
Ø	ORIGINAL RELEASE FOR PRODUCTION	3-11-65	Ø	Ø	Ø	
SYM	DESCRIPTION	DATE	CH. NO.	DRAFTS	CHECKER	ENG. APP.
UNLESS OTHERWISE SPECIFIED DIMENSIONS ARE IN INCHES AND INCLUDE CHEMICALLY APPLIED OR PLATED FINISHES		SCALE 1:2				
DECIMALS .X ± .05 .XX ± .01 .XXX ± .005	TOLERANCES	FRACTIONS ± 1/64 ANGLES ± 0° 30'	CODE			

REQ. PER UNIT	USED ON			MS4426 $\emptyset$
	MODEL	ASS'Y. NO.	DATE	
1	DDRR-506		2-26-65	

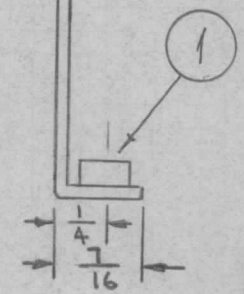


REQ.	ITEM	PART NO.	DESCRIPTION				SYMBOL	
		.064	THE TECHNICAL MATERIEL CORP.					
		STOCK SIZE	MAMARONECK, NEW YORK					
		ALUMINUM	COVER, TERMINAL CHASSIS					
$\emptyset$	ORIGINAL RELEASE FOR PRODUCTION	8/23/65	$\emptyset$	HYK				
SYM	DESCRIPTION	DATE	CH. NO.	DRAFTS	CHECKER	ENG. APP.		
UNLESS OTHERWISE SPECIFIED DIMENSIONS ARE IN INCHES AND INCLUDE CHEMICALLY APPLIED OR PLATED FINISHES		SCALE						
DECIMALS .X $\pm$ .05 .XX $\pm$ .01 .XXX $\pm$ .005	TOLERANCES	FRACTIONS $\pm$ 1/64 ANGLES $\pm$ 0° 30'	CODE A	5052-H32				
				TYPE & TEMPER		HEAT TREAT. SPEC.		
				S404 YEL IRIDITE				
				FINISH & SPEC. NO.		ELEC. DES. APP.	MECH. DES. APP.	
				M. STURMER 2-26-65		9/18/65	8/23/65	
				DRAWN		CHECKED	FINAL APPROVAL	
						9-18-65	MS4426 $\emptyset$	

REQ. PER UNIT 12	USED ON		MS4427 Ø
	MODEL DDRR-506	ASS'Y. NO.	



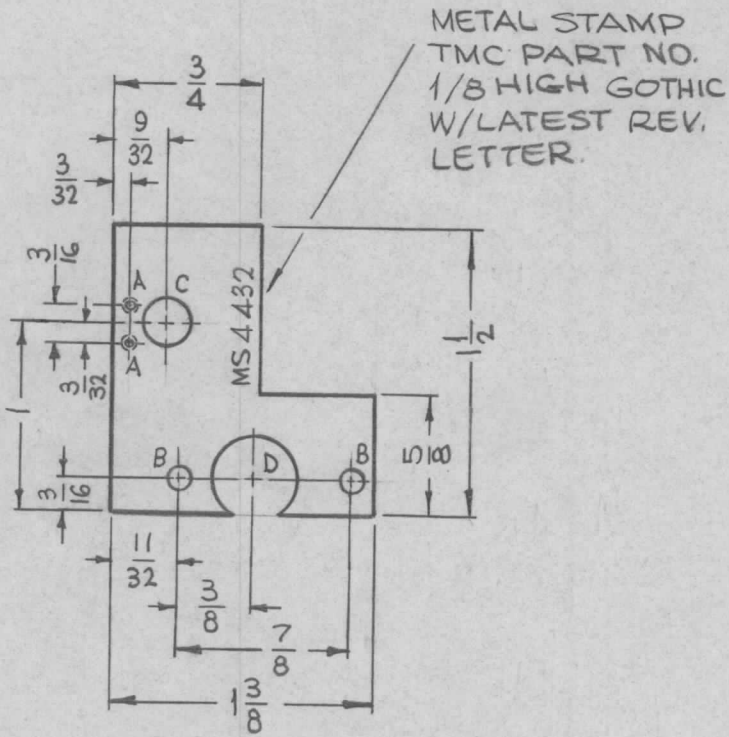
A -  $\frac{9}{64}$  DIA. (3 REQ.)  
 B -  $.191-.194$  DIA (2 REQ.)



- UNLESS OTHERWISE SPECIFIED:
1. USE MATERIAL THICKNESS FOR MAXIMUM RADIUS ON ALL BENDS
  2. ALL ANGULAR BENDS 90 DEGREES
  3. REMOVE ALL BURRS AND SHARP EDGES
  4. MOUNT INSERTS AFTER FINISHING

2	1	NT129-632-4	NUT PLAIN, SPLINE	B
REQ. ITEM	PART NO.		DESCRIPTION	SYMBOL
	064		THE TECHNICAL MATERIEL CORP. MAMARONECK, NEW YORK	BRACKET, MOUNTING, TERMINAL BOARD
	STOCK SIZE			
	ALUM.		MATERIAL	
UNLESS OTHERWISE SPECIFIED DIMENSIONS ARE IN INCHES AND INCLUDE CHEMICALLY APPLIED OR PLATED FINISHES		SCALE	M. STURMER 2-26-65	4/20/65
DECIMALS .X ± .05 .XX ± .01 .XXX ± .005	TOLERANCES	FRACTIONS ± 1/64 ANGLES ± 0° 30'	TYPE & TEMPER S404 YEL. IRIDITE	HEAT TREAT. SPEC.
CODE			FINISH & SPEC. NO.	ELEC. DES. APP. MECH. DES. APP.

REQ. PER UNIT	USED ON			MS4432	Q
	MODEL	ASS'Y. NO.	DATE		
1	RFTA-1		3-9-65		



HOLES	DESCRIPTION	REQ.
A	DRILL & TAP FOR 2-56	2
B	1/8 DIA.	2
C	1/4 DIA.	1
D	7/16 DIA.	1

						REQ. ITEM	PART NO.	F. BUDETTI	DESCRIPTION	SYMBOL		
Ø	ORIGINAL RELEASE	6-27-69		RS		1/8 THICK		THE TECHNICAL MATERIEL CORP. MAMARONECK, NEW YORK				
X	EXP. RELEASE	3-9-65	X	SRG		ALUMINUM		BRACKET, MTG. MINIATURE SWITCH				
SYM	DESCRIPTION	DATE	CH. NO.	DRAFTS	CHECKER	ENG. APP.	MATERIAL					
UNLESS OTHERWISE SPECIFIED DIMENSIONS ARE IN INCHES AND INCLUDE CHEMICALLY APPLIED OR PLATED FINISHES		SCALE		1:1		5052-H32		SRG		SRG		
DECIMALS .X ± .05 .XX ± .01 .XXX ± .005	TOLERANCES	FRACTIONS ± 1/64 ANGLES ± 0° 30'	CODE	A		S404 YEL. IRIDITE		TYPE & TEMPER	HEAT TREAT. SPEC.	DRAWN	CHECKED	FINAL APPROVAL
						FINISH & SPEC. NO.		ELEC. DES. APP.	MECH. DES. APP.	MS4432	Q	

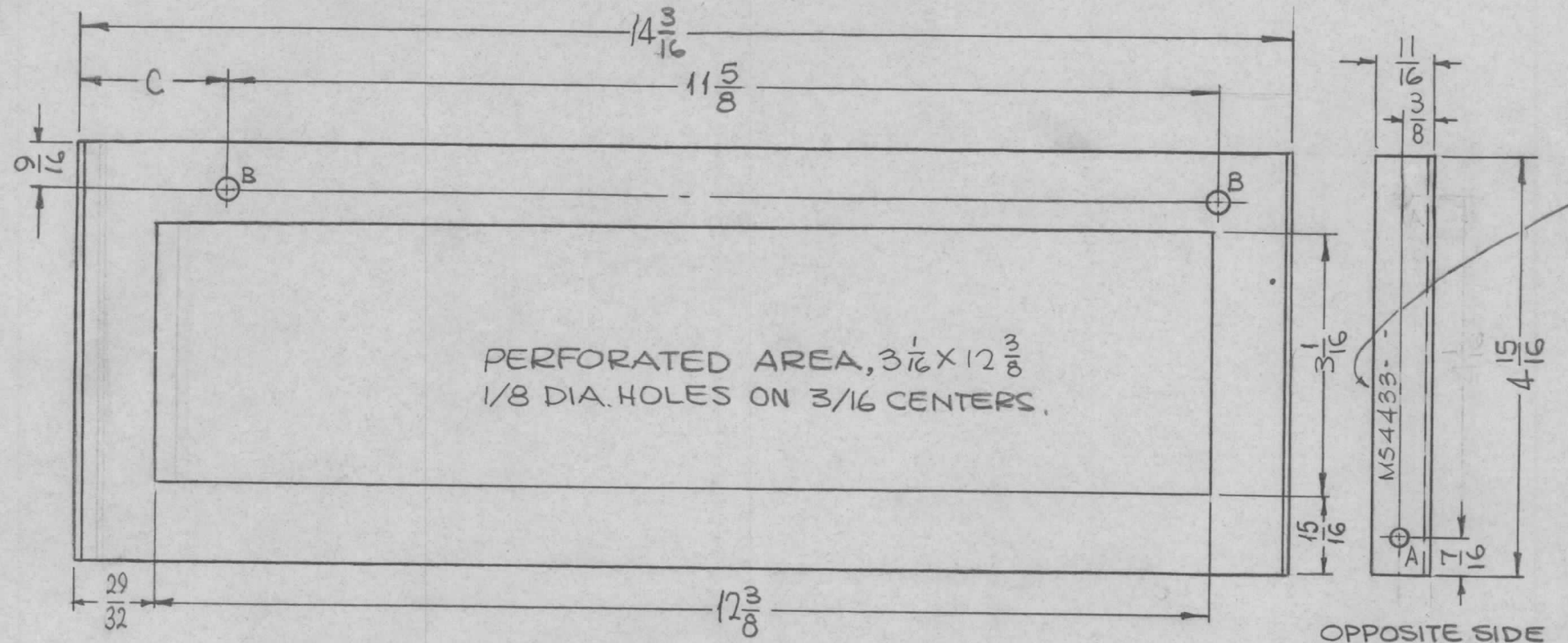
TMC P/N	C
MS4433-1	1-23/32
MS4433-2	27/32

UNLESS OTHERWISE SPECIFIED:

1. USE MATERIAL THICKNESS FOR MAXIMUM RADIUS ON ALL BENDS
2. ALL ANGULAR BENDS 90 DEGREES
3. REMOVE ALL BURRS AND SHARP EDGES

REQ. PER UNIT	USED ON		
	MODEL	ASS'Y. NO.	DATE
1 EA	TST (110K)		3-5-65

MS4433  $\emptyset$



MARK TMC PART NO 1/8 HIGH GOTHIC WITH LATEST REV LETTER.

HOLES:  
 A - 11/64 DIA. — 1 REQ.  
 B - 1/4 DIA. — 2 REQ.

OPPOSITE SIDE SAME

						REQ. ITEM	PART NO.	F. BUDETTI	DESCRIPTION	SYMBOL	
$\emptyset$	ORIGINAL RELEASE FOR PRODUCTION	5-5-66	$\emptyset$	WJW		.064 THICK		THE TECHNICAL MATERIEL CORP. MAMARONECK, NEW YORK			
X	EXP. RELEASE	3-11-65	X	SRG		ALUMINUM		COVER, BOTTOM (DRIVER DRAWER)			
SYM	DESCRIPTION	DATE	CH. NO.	DRAFTS	CHECKER	ENG. APP.	MATERIAL				
UNLESS OTHERWISE SPECIFIED DIMENSIONS ARE IN INCHES AND INCLUDE CHEMICALLY APPLIED OR PLATED FINISHES		SCALE					5052-H32	SRG			
DECIMALS	TOLERANCES	FRACTIONS	CODE				TYPE & TEMPER	HEAT TREAT. SPEC.	DRAWN	CHECKED	FINAL APPROVAL
.X $\pm$ .05 .XX $\pm$ .01 .XXX $\pm$ .005		$\pm$ 1/64 ANGLES $\pm$ 0° 30'	A				S404 YEL. IRIDITE				MS4433 $\emptyset$
							FINISH & SPEC. NO.	ELEC. DES. APP.	MECH. DES. APP.		

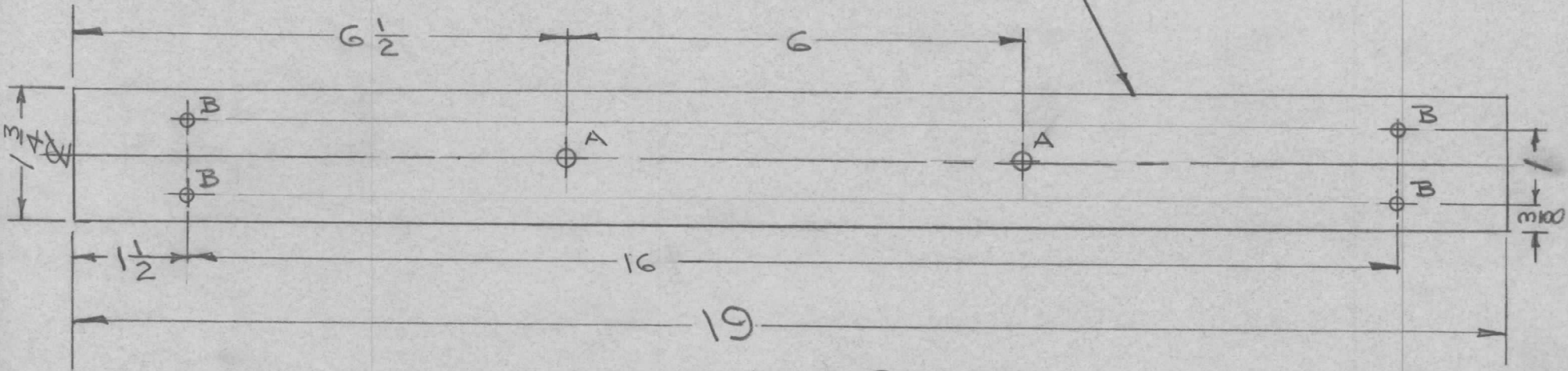
REQ. PER UNIT	USED ON		
	MODEL	ASS'Y. NO.	DATE
1	UTD-3		11-9-65

MS4435  $\emptyset$

HOLE LEGEND

- A -  $\frac{13}{64}$  DIA. 2 REQ.
- B -  $\frac{9}{64}$  DIA. 4 REQ.

METAL STAMP TMC PART NO. 1/8 HIGH GOTHIC.  
WITH LATEST REVISION LETTER (ON REAR)



FRONT VIEW SHOWN

MACHINING:

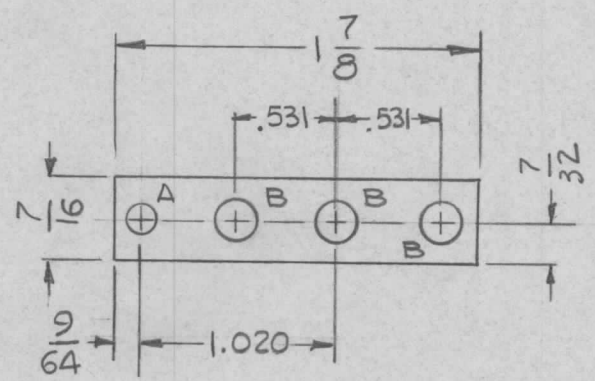
1. MILL ALL EDGES.
2. HOLES MUST BE DRILLED, UNLESS OTHERWISE SPECIFIED.
3. LATERAL BOW OF PANEL MUST BE KEPT TO .031 TOLERANCE.
4. PANEL MUST BE FREE OF ALL MACHINING MARKS, GOUGES AND SCRATCHES. IF NECESSARY, SAND FRONT OF PANEL WITH NO. 120 GRIT SANDPAPER.

FINISH NOTES:

1. S404 - IRIDITE 14-2 AL-COAT.
  2. S114 - ZINC CHROMATE PRIMER
  3. S115 - SMOOTH GRAY ENAMEL
- FRONT AND EDGES ONLY

REQ.	ITEM	PART NO.	DESCRIPTION				SYMBOL
			3/16 THICK				THE TECHNICAL MATERIEL CORP. MAMARONECK, NEW YORK
			STOCK SIZE				
			ALUMINUM				
			MATERIAL				PANEL FRONT
			2024-T3		11/9/65		
			TYPE & TEMPER	HEAT TREAT. SPEC.	DRAWN	CHECKED	FINAL APPROVAL
			SEE NOTE				
			FINISH & SPEC. NO.				
			ELEC. DES. APP.				
			MECH. DES. APP.				
			MS4435 $\emptyset$				

REQ. PER UNIT	USED ON			MS4436 $\emptyset$
	MODEL	ASS'Y. NO.	DATE	
8	CHG-3	SEE NOTE	3-12-65	

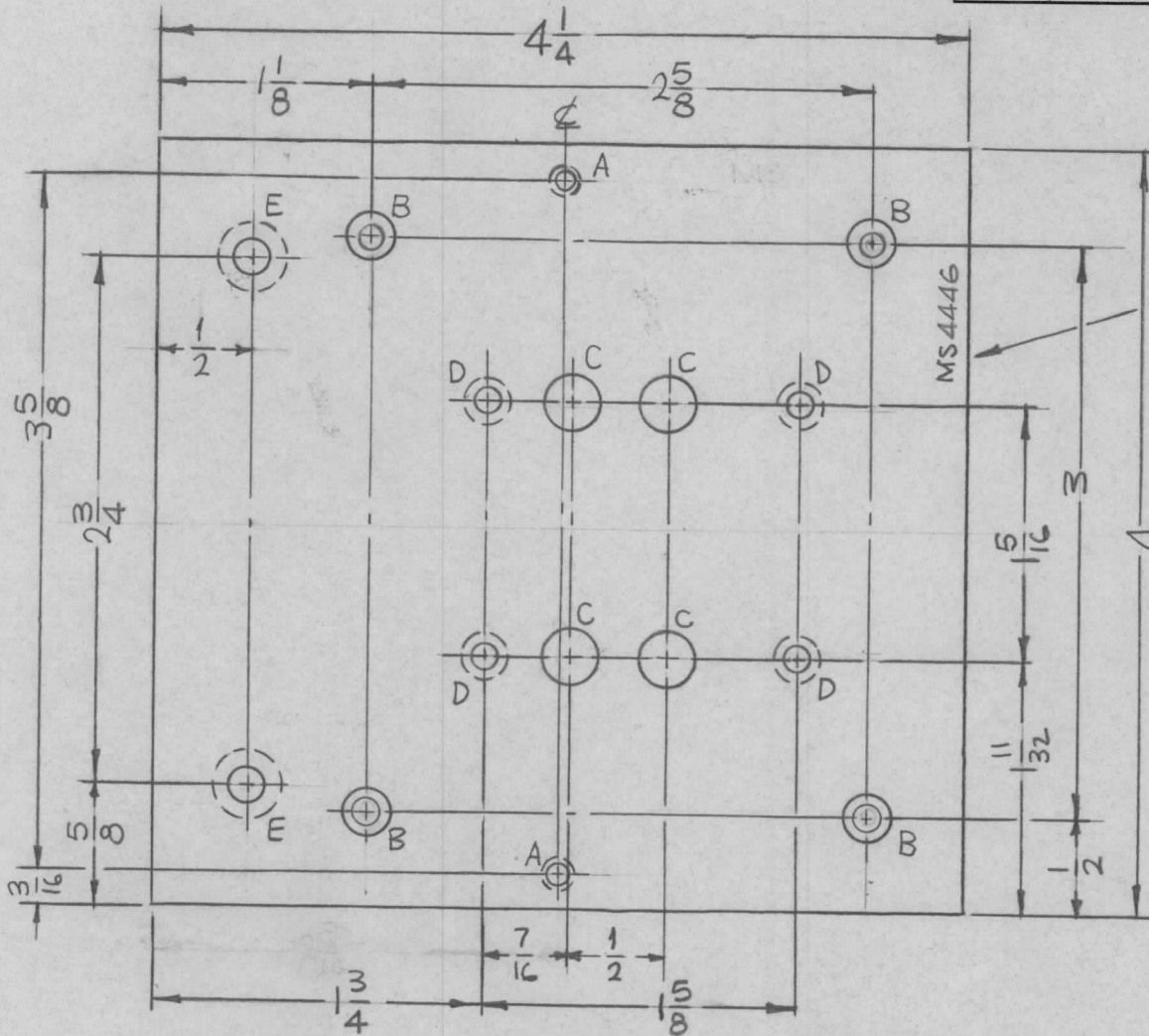


~USED ON~  
 1 EA. REQ. ON AX 548 TO AX 555 INCLUSIVE

HOLE	DESCRIPTION	REQ.
A	5/32 DIA	1
B	.203 DIA	3

				REQ. ITEM	PART NO.	J. ANGER	DESCRIPTION	SYMBOL
				.016 THK		THE TECHNICAL MATERIEL CORP.		
				STOCK SIZE		MAMARONECK. NEW YORK		
				COPPER		STRAP, GROUND		
				MATERIAL				
				SOFT	ROCKWELL #F 45	G.D.L.	<i>J.A.</i>	<i>RAC</i>
				TYPE & TEMPER	HEAT TREAT. SPEC.	DRAWN	CHECKED	FINAL APPROVAL
				S245 SILVER PLATE		<i>J. Anger</i>		
				FINISH & SPEC. NO.		ELEC. DES. APP.	MECH. DES. APP.	MS4436 $\emptyset$
UNLESS OTHERWISE SPECIFIED DIMENSIONS ARE IN INCHES AND INCLUDE CHEMICALLY APPLIED OR PLATED FINISHES				SCALE	1:1			
DECIMALS	TOLERANCES		FRACTIONS	CODE				
.X ± .05			± 1/64					
.XX ± .01			ANGLES					
.XXX ± .005			± 0° 30'					

REQ. PER UNIT	USED ON			MS4446	Ø
	MODEL	ASS'Y. NO.	DATE		
2	GPT-200K		3-16-65		



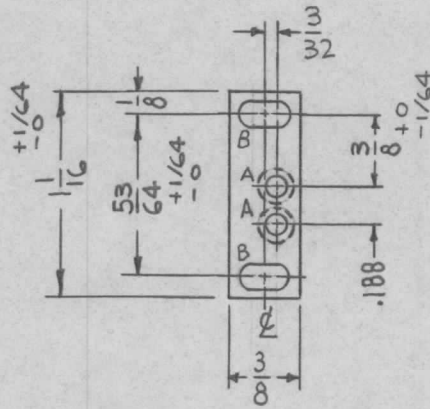
METAL STAMP TMC PART NO. 1/8 HIGH GOTHIC W/LATEST REV. LETTER.

HOLES	DESCRIPTION	REQ.
A	DRILL & TAP FOR 10-32	2
B	DR. .196 DIA C'SINK 82° X.390	4
C	.9/32 DIA.	4
D	DR. .120 DIA. C'SINK 82° X.230 D.	4
E	DR. .169 DIA. C'SINK 82° X.337 D.	2

SYM	DESCRIPTION	DATE	CH. NO.	DRAFTS	CHECKER	ENG. APP.	REQ. ITEM	PART NO.	F. BUDETTI DESCRIPTION	SYMBOL
Ø	ORIGINAL RELEASE FOR PRODUCTION	4/20/65	##	SRG			1/8 THICK		THE TECHNICAL MATERIEL CORP. MAMARONECK, NEW YORK	PLATE, MTG RELAY RESISTOR UNIT
X1	(B) HOLES WERE 15/64	4/12/65		CJL			STOCK SIZE			
X	EXP. RELEASE						ALUMINUM			
	UNLESS OTHERWISE SPECIFIED DIMENSIONS ARE IN INCHES AND INCLUDE CHEMICALLY APPLIED OR PLATED FINISHES	SCALE								
		1:1								
	DECIMALS .X ± .05 .XX ± .01 .XXX ± .005	FRACTIONS ± 1/64 ANGLES ± 0° 30'	CODE							
	TOLERANCES	A								
			5052-H32	HEAT TREAT. SPEC.	SRG	QC/S	OF B			
			5404 YELLOW IRIDITE							
			FINISH & SPEC. NO.	ELEC. DES. APP.	MECH. DES. APP.	MS4446 Ø				



REQ. PER UNIT 2	USED ON		MS4456	Ø
	MODEL RFTA-1	ASS'Y. NO.		



HOLES:

A ~ DRILL .090 DIA. C'SINK 82° X .177 DIA. (2REQ.)

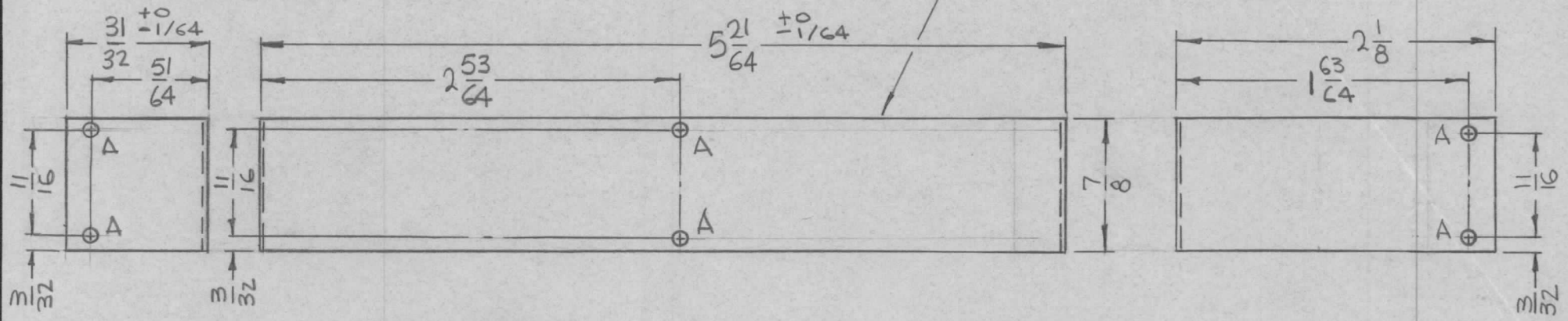
B ~ 1/4 X 1/8 SLOTS (2REQ.)

								REQ. ITEM	PART NO.	F. BUDETTI	DESCRIPTION	SYMBOL	
									.050 THICK		THE TECHNICAL MATERIEL CORP.		
									STOCK SIZE		MAMARONECK.	NEW YORK	
									ALUMINUM		PLATE, MTG, SWITCH		
									MATERIAL				
Ø	ORIGINAL RELEASE FOR PRODUCTION	6.7.66	Ø	440					5052-H32	SRG	QCB	MS4456	
SYM	DESCRIPTION	DATE	CH. NO.	DRAFTS	CHECKER	ENG. APP.			TYPE & TEMPER	HEAT TREAT. SPEC.	DRAWN	CHECKED	FINAL APPROVAL
UNLESS OTHERWISE SPECIFIED DIMENSIONS ARE IN INCHES AND INCLUDE CHEMICALLY APPLIED OR PLATED FINISHES		SCALE											
		1:1											
DECIMALS		FRACTIONS		CODE									
.X ± .05		± 1/64		A									
.XX ± .01		ANGLES											
.XXX ± .005		± 0° 30'											
							S404 YEL. IRIDITE		FINISH & SPEC. NO.		ELEC. DES. APP.		MECH. DES. APP.
											MS4456		Ø

REQ. PER UNIT	USED ON			MS4458	Ø
	MODEL	ASS'Y. NO.	DATE		
2	RFTA-1		8-12-65		

HOLES:  
A-7/64 DIA. (6 REQ.)

MARK TMC PART NO. (MS4458)  
1/8 HIGH GOTHIC W/LATEST  
REV. LETTER. (ON REAR)



- UNLESS OTHERWISE SPECIFIED:
1. USE MATERIAL THICKNESS FOR MAXIMUM RADIUS ON ALL BENDS
  2. ALL ANGULAR BENDS 90 DEGREES
  3. REMOVE ALL BURRS AND SHARP EDGES

REQ.	ITEM	PART NO.	F. BUDETTI DESCRIPTION				SYMBOL			
Ø	ORIGINAL RELEASE FOR PRODUCTION	5/19/66	Ø	CV	AK	.032 THICK STOCK SIZE		THE TECHNICAL MATERIEL CORP. MAMARONECK. NEW YORK		
X1	COMPLETELY REVISED	8-12-65	X1	MS		ALUMINUM		COVER, GEAR BOX		
SYM	DESCRIPTION	DATE	CH. NO.	DRAFTS	CHECKER	ENG. APP.	MATERIAL			
UNLESS OTHERWISE SPECIFIED DIMENSIONS ARE IN INCHES AND INCLUDE CHEMICALLY APPLIED OR PLATED FINISHES			SCALE 1:1			5052-H32	MS	JCB	MS	MS
DECIMALS .X ± .05 .XX ± .01 .XXX ± .005		FRACTIONS ± 1/64 ANGLES ± 0° 30'		TOLERANCES		CODE A	TYPE & TEMPER S404 YEL. IRIDITE		HEAT TREAT. SPEC. AA 6/19/66	
							DRAWN		CHECKED	
							ELEC. DES. APP.		MECH. DES. APP.	
							MS4458		Ø	

HOLES:

A - 5/8 DIA

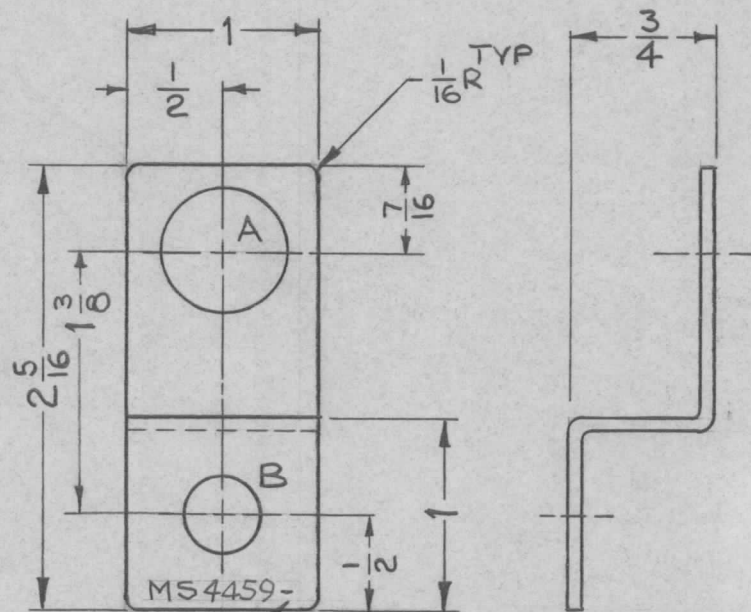
B - 3/8 DIA

REQ.

1

1

REQ. PER UNIT	USED ON			MS4459 Q
	MODEL	ASS'Y. NO.	DATE	
1	AP126		3-24-65	



METAL STAMP  
TMC P/N, 1/8 HIGH GOTHIC WITH  
LATEST REVISION LETTER

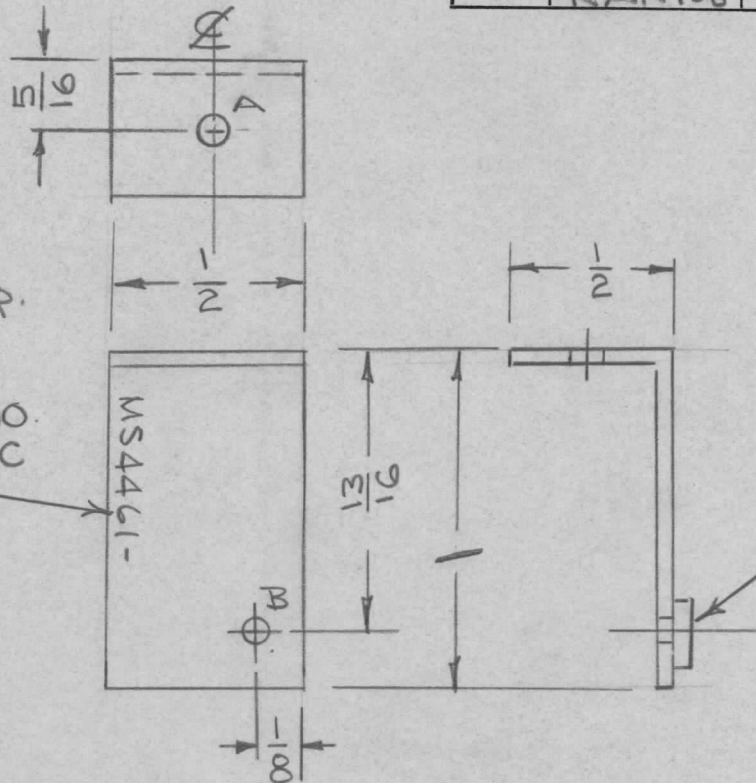
UNLESS OTHERWISE SPECIFIED:

1. USE MATERIAL THICKNESS FOR MAXIMUM RADIUS ON ALL BENDS
2. ALL ANGULAR BENDS 90 DEGREES
3. REMOVE ALL BURRS AND SHARP EDGES

REQ.	ITEM	PART NO.	DESCRIPTION				SYMBOL
		.064 THK	THE TECHNICAL MATERIEL CORP.				
		STOCK SIZE	MAMARONECK, NEW YORK				
Q	ORIGINAL RELEASE FOR PRODUCTION	8.25.66	Q	RME			
X		3.24.65	X	ATB			
SYM	DESCRIPTION	DATE	CH. NO.	DRAFTS	CHECKER	ENG. APP.	
UNLESS OTHERWISE SPECIFIED DIMENSIONS ARE IN INCHES AND INCLUDE CHEMICALLY APPLIED OR PLATED FINISHES		SCALE 1:1					
DECIMALS .X ± .05 .XX ± .01 .XXX ± .005	TOLERANCES	FRACTIONS ± 1/64 ANGLES ± 0° 30'	CODE A				
5052 H32		3.24.65	WOB	HOC	OTB	MA	
TYPE & TEMPER		HEAT TREAT. SPEC.	DRAWN	CHECKED	FINAL APPROVAL		
S404 YELL. IRIDITE					MS4459 Q		
FINISH & SPEC. NO.		ELEC. DES. APP.	MECH. DES. APP.				

REQ. PER UNIT	USED ON		
	MODEL	ASS'Y. NO.	DATE
2	RAK106		2/23/66

MS4461  $\emptyset$



A -  $\frac{11}{64} D$  1 REQ.

B - .191 - .194 DIA 1 REQ.

MARK TMC PT NO. 1/8 HIGH GOTHIC W/LATEST REV. LETTER.

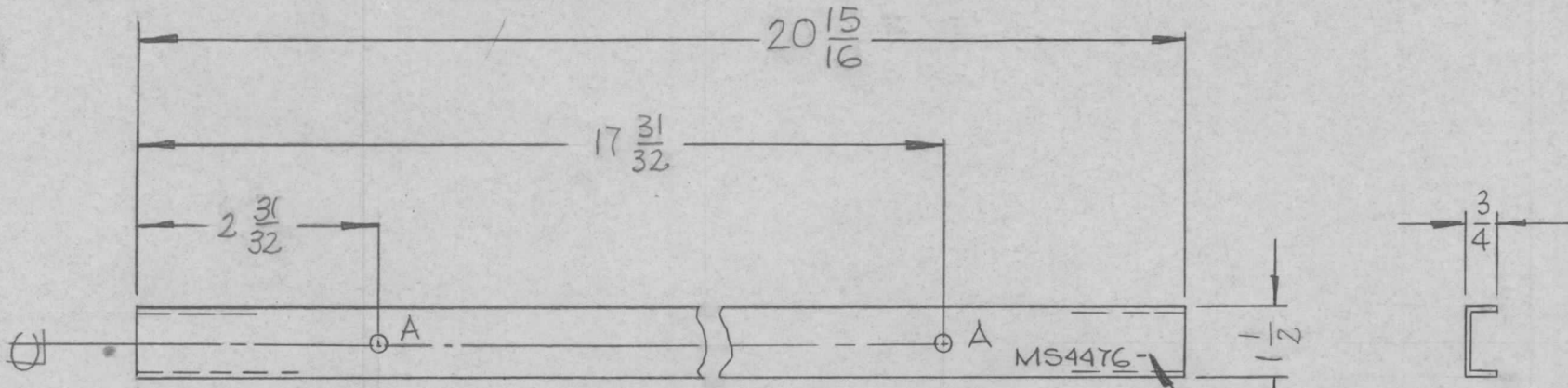
MS4461-

1 MOUNT INSERTS IN HOLE "B" AS SHOWN AFTER FINISHING.

- UNLESS OTHERWISE SPECIFIED:
1. USE MATERIAL THICKNESS FOR MAXIMUM RADIUS ON ALL BENDS
  2. ALL ANGULAR BENDS 90 DEGREES
  3. REMOVE ALL BURRS AND SHARP EDGES
  4. MOUNT INSERTS AFTER FINISHING

1	1	NT129-632-4	NUT, PLN SPLINE	
REQ. ITEM	PART NO.		DESCRIPTION	SYMBOL
	.064 THICK		THE TECHNICAL MATERIEL CORP. MAMARONECK, NEW YORK	BRACKET, ANGLE
	STOCK SIZE			
	ALUMINUM		MATERIAL	
UNLESS OTHERWISE SPECIFIED DIMENSIONS ARE IN INCHES AND INCLUDE CHEMICALLY APPLIED OR PLATED FINISHES		SCALE	JAD.	JCS
DECIMALS	TOLERANCES	FRACTIONS	TYPE & TEMPER	HEAT TREAT. SPEC.
.X ± .05		± 1/64	S404 YELLOW	IRIDITE
.XX ± .01		ANGLES	FINISH & SPEC. NO.	
.XXX ± .005		± 0° 30'	ELEC. DES. APP. MECH. DES. APP.	
			MS4461 $\emptyset$	

REQ. PER UNIT	USED ON			MS4476 $\emptyset$
	MODEL	ASS'Y. NO.	DATE	
	TSTE-10K		5-5-66	



MARK TMC P/N  $\frac{1}{8}$  HIGH  
 GOTHIC W/LATEST  
 REVISION LETTER

A -  $\frac{3}{16}$  D 2 REQ.

REQ. ITEM	PART NO.	DESCRIPTION	SYMBOL
	$\frac{1}{4} \times \frac{3}{4} \times \frac{1}{2}$ CHANNEL	THE TECHNICAL MATERIEL CORP. MAMARONECK, NEW YORK	$\emptyset$
	STOCK SIZE		
$\emptyset$	EXTRUDED ALUM.	TRIM AUX FRAME REAR BOT.	
	MATERIAL		
	2024-T6	WFW	J.R. 4/2/66
	TYPE & TEMPER	HEAT TREAT. SPEC.	DRAWN
	S404 VEL IRIDITE		CHECKED
	FINISH & SPEC. NO.	ELEC. DES. APP.	MECH. DES. APP.
			MS4476 $\emptyset$

UNLESS OTHERWISE SPECIFIED  
 DIMENSIONS ARE IN INCHES AND INCLUDE  
 CHEMICALLY APPLIED OR PLATED FINISHES

SCALE: NOT TO SCALE

DECIMALS  
 .X  $\pm$  .05  
 .XX  $\pm$  .01  
 .XXX  $\pm$  .005

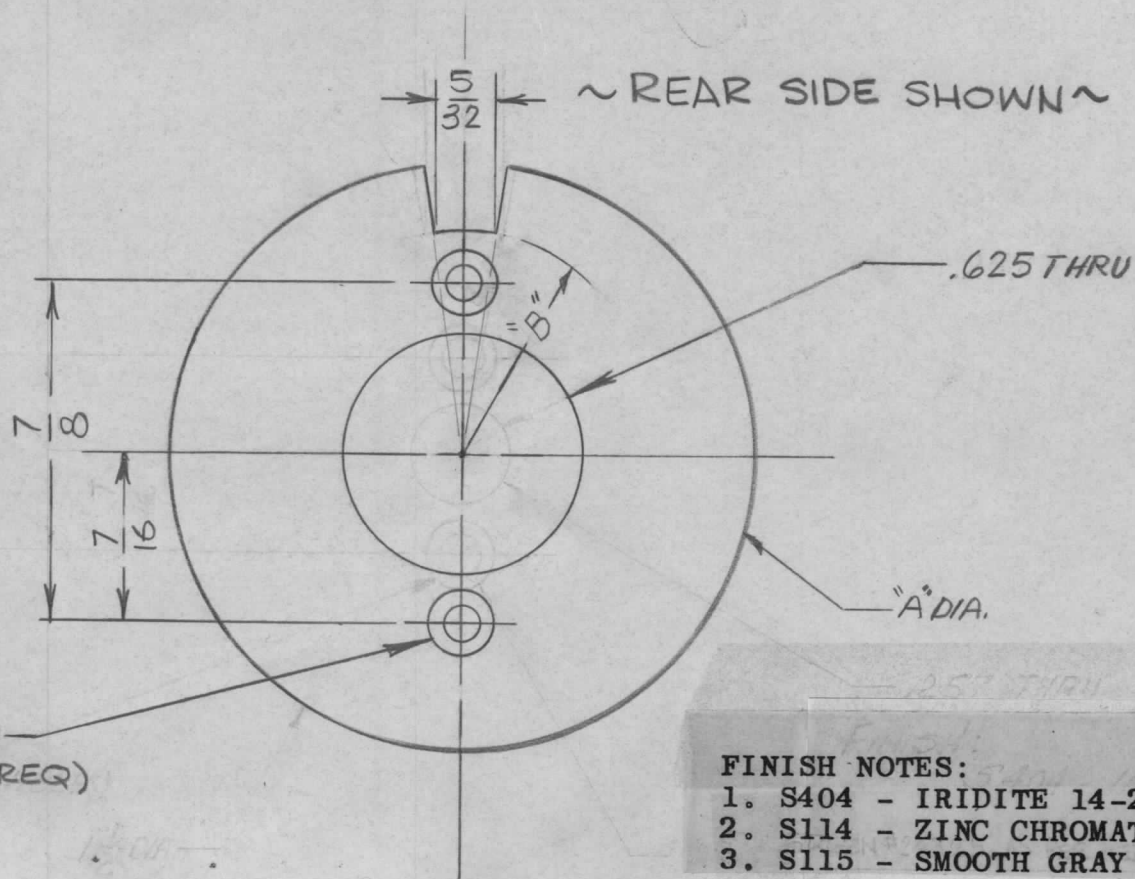
FRACTIONS  
 $\pm$  1/64  
 ANGLES  
 $\pm$  0° 30'

TOLERANCES

PART NO.	A	B
MS4485-1	1 7/8	23/32
MS4485-2	1 1/2	9/16

REQ. PER UNIT	USED ON		
	MODEL	ASS'Y. NO.	DATE
1	LRCC PCM	AX567	3/19/65
1	LRCM	AX568	

MS4485  $\emptyset$



FINISH NOTES:

1. S404 - IRIDITE 14-2 AL-COAT.
2. S114 - ZINC CHROMATE PRIMER } FRONT AND
3. S115 - SMOOTH GRAY ENAMEL } EDGES ONLY

OR  
PRIME AND PAINT PER CUSTOMER'S SPECIFICATIONS

SYM	DESCRIPTION	DATE	CH. NO.	DRAFTS	CHECKER	ENG. APP.	REQ. ITEM	PART NO.	DESCRIPTION	SYMBOL	
$\emptyset$	ORIG. RELEASE FOR PROD.	4-22-65		HCA				.040 THK.	THE TECHNICAL MATERIEL CORP. MAMARONECK, NEW YORK E-3185-F	SKIRT, KNOB	
X	EXP. RELEASE	3-27-65	1	CL	BN		ALUMINUM				
							5052-H32	CLANZA			BN
UNLESS OTHERWISE SPECIFIED DIMENSIONS ARE IN INCHES AND INCLUDE CHEMICALLY APPLIED OR PLATED FINISHES							SCALE				
							2:1				
DECIMALS .X $\pm$ .05 .XX $\pm$ .01 .XXX $\pm$ .005	TOLERANCES	FRACTIONS $\pm$ 1/64 ANGLES $\pm$ 0° 30'	CODE				TYPE & TEMPER	HEAT TREAT. SPEC.	DRAWN	CHECKED	FINAL APPROVAL
							SEE NOTE				MS4485 $\emptyset$
							FINISH & SPEC. NO.	ELEC. DES. APP.	MECH. DES. APP.		

**FINISH NOTES:**

1. S404 - IRIDITE 14-2 AL-COAT.
2. S114 - ZINC CHROMATE PRIMER) FRONT AND
3. S115 - SMOOTH GRAY ENAMEL ) EDGES ONLY

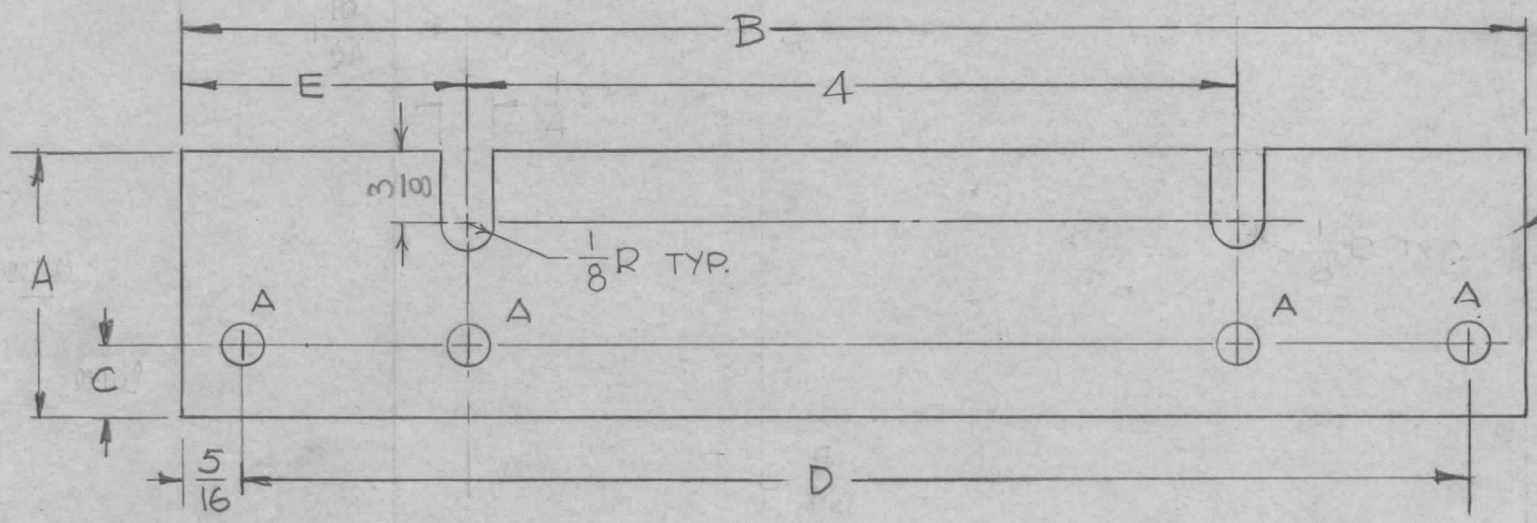
REQ. PER UNIT	USED ON		
	MODEL	ASS'Y. NO.	DATE
2	TC SA-1	AXC32	8-9-66

MS4489-Ø

~ HOLE ~  
A - 13/64 DIA. 4 REQ.

TMC P/N	A	B	C	D	E
MS 4489	1-3/8	6-31/32	3/8	6-11/32	1-31/64
MS4489-2	1-11/32	6-15/16	7/16	6-5/16	1-15/32

← THIS PART REPLACED BY MS4489-2 AS OF 12-15-66.



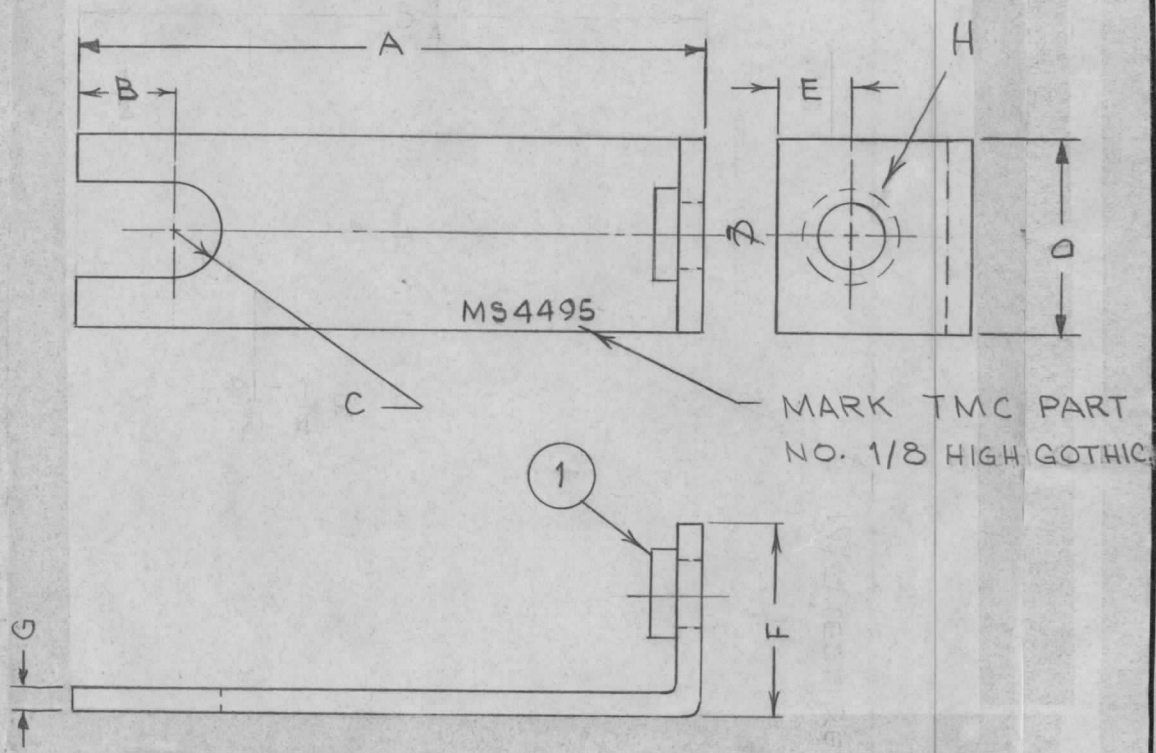
MARK TMC PART No. 1/8 HIGH GOTHIC W/LATEST REV. LETTER ON REAR OF PLATE

Ø	ORIGINAL RELEASE FOR PRODUCTION	1/11/67	Ø	CV		
X5	CHART & NOTE ADDED	12-15-66	X5			
X4	RE-DESIGNED	12-13-66	X4			
X3	REVISED & REDRAWN FROM SIZE (2)	8-9-66	X3	G.D.L.		
X2	HOLES ADDED	7-7-66	X2	SRG		
X1	TOL. ADDED, 3/8 WAS 1/4, MOD. WAS TST-2.5K	6-21-66	X1			
X	EXP. RELEASE	11-25-64	X			
SYM	DESCRIPTION	DATE	CH. NO.	DRAFTS	CHECKER	ENG. APP.
UNLESS OTHERWISE SPECIFIED DIMENSIONS ARE IN INCHES AND INCLUDE CHEMICALLY APPLIED OR PLATED FINISHES		SCALE	1:1			
DECIMALS .X ± .05 .XX ± .01 .XXX ± .005	TOLERANCES	FRACTIONS ± 1/64 ANGLES ± 0° 30'	CODE	A		

REQ. ITEM	PART NO.	BUDETTI	DESCRIPTION	SYMBOL
	3/16 THK	THE TECHNICAL MATERIEL CORP. MAMARONECK, NEW YORK		
	STOCK SIZE	PLATE, PANEL MTG.		
	ALUMINUM			
	MATERIAL			
	5052-H32	G.D.L.		
	TYPE & TEMPER	HEAT TREAT. SPEC.	DRAWN	CHECKED
	FINISH & SPEC. NO.	ELEC. DES. APP.	MECH. DES. APP.	
	SEE NOTES			
				MS4489-Ø

MS4495 A

TMC P/N	A	B	C	D	E	F	G	H	ITEM 1	MATERIAL	FINISH	QTY/ UNIT	MODEL
MS4495	3-1/4	1/2	1/4	1	3/8	1	1/8	.344 .347	NT129-420-6	ALUM. 5052-H32	IRIDITE S404	12	KIT 247
MS4495-2	1-1/4	1/2	3/16	1	3/8	7/8	.081	.250 .253	NT129-1032-4	ALUM. 5052-H32	IRIDITE S404	12	200K



UNLESS OTHERWISE SPECIFIED:

1. USE MATERIAL THICKNESS FOR MAXIMUM RADIUS ON ALL BENDS
2. ALL ANGULAR BENDS 90 DEGREES
3. REMOVE ALL BURRS AND SHARP EDGES
4. MOUNT INSERTS AFTER FINISHING

SYM	DESCRIPTION	DATE	CH. NO.	DRAFTS	CHECKER	ENG. APP.	REQ.	ITEM	PART NO.	BUDETTI	DESCRIPTION	SYMBOL
							1	1	SEE CHART		NUT, PLN, SPLINE	
A	COMPLETELY REVISED	1-6-67	17603	RME	JCS	EXS			1/8 THICK STOCK SIZE		THE TECHNICAL MATERIEL CORP. MAMARONECK. NEW YORK	
Ø	ORIGINAL RELEASE FOR PRODUCTION	4-7-65	AA	NLA					ALUMINUM		BRACKET, COVER PROTECT XFMR	
									5052-H32		H-AUSTIN	JCS
									S404-IRIDITE		MECH. DES. APP.	MS4495 A