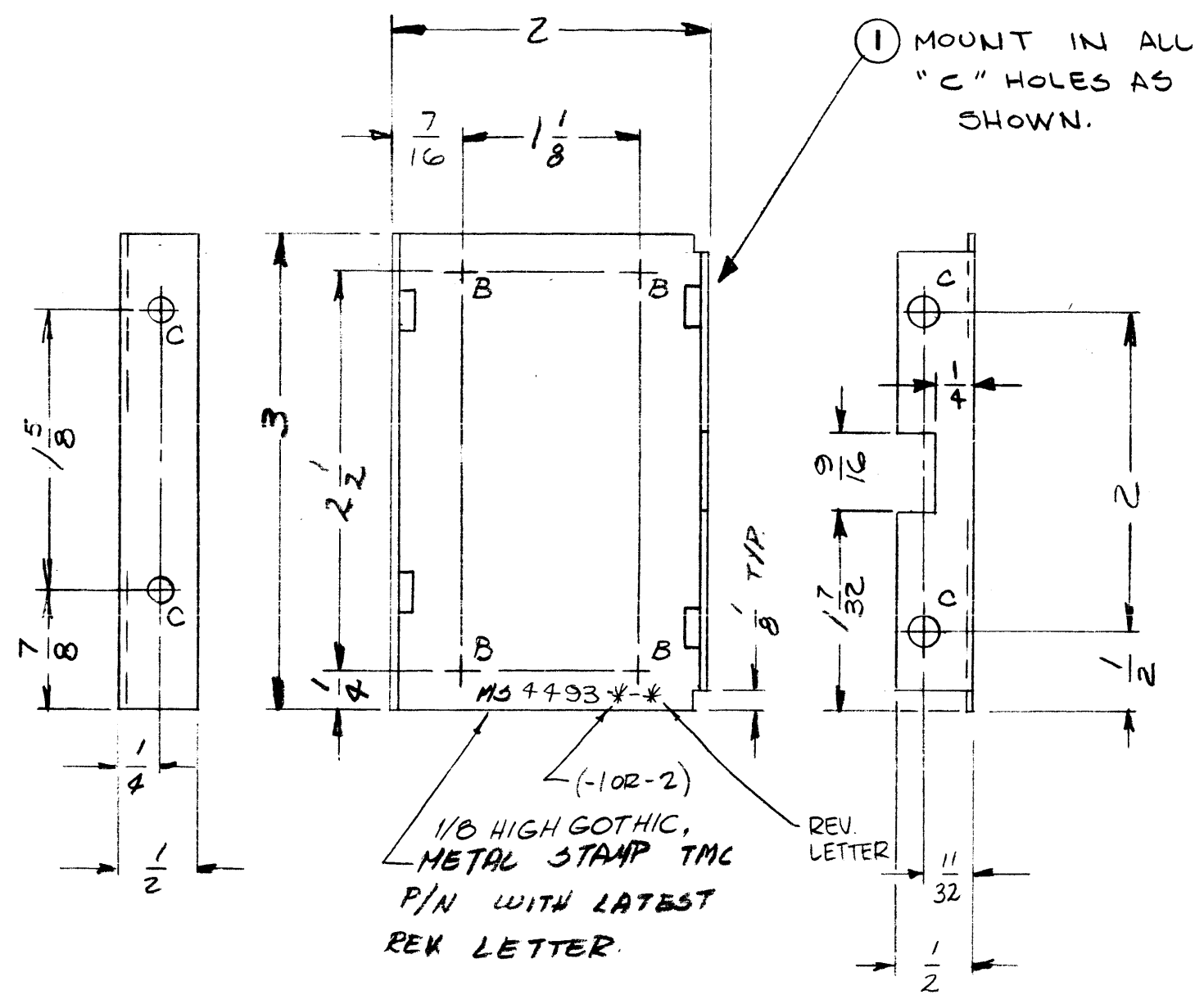


| SYM | DESCRIPTION | REVISIONS | | | | |
|-----|--|-----------|------------|--------------------|------|------|
| | | DATE | E.M.N. NO. | DRAFT | CHKD | APPD |
| X1 | DIM 1/4 ADDED TO CUTOUT (ERROR) (4) "C" HOLES ADDED; (2) "B" HOLES DELETED (2) "A" HOLES .221-.224 + (1) (2) NT129-832-4 DELETED | 4-12-65 | X1 | <i>[Signature]</i> | J.M. | W.J. |
| X2 | CHART ADDED | 4-13-65 | X2 | <i>[Signature]</i> | J.M. | W.J. |
| Ø | ORIGINAL RELEASE FOR PRODUCTION | 5/26/65 | -A- | <i>[Signature]</i> | | |

MS4493



HOLES

B - 3/16 DIA. - 4 REQ
 C - .191-.194 DIA - 4 REQ.

| TMC P/N | DESCRIPTION |
|----------|---------------------|
| MS4493-1 | AS SHOWN |
| MS4493-2 | OPP. HAND IDENTICAL |

- UNLESS OTHERWISE SPECIFIED:
1. USE MATERIAL THICKNESS FOR MAXIMUM RADIUS ON ALL BENDS
 2. ALL ANGULAR BENDS 90 DEGREES
 3. REMOVE ALL BURRS AND SHARP EDGES
 4. MOUNT INSERTS AFTER FINISHING

NOTES

| | | |
|---|---------------|------------|
| 2 | PCSA-1 | |
| Q'TY./UNIT | MODEL USED ON | ASS'Y. NO. |
| SCALE 1:1 | CODE A | |
| THE CONTENTS OF THIS DRAWING ARE THE EXCLUSIVE PROPERTY OF THE TECHNICAL MATERIEL CORP. ITS UNAUTHORIZED USE OR REPRODUCTION IN WHOLE OR IN PART IS STRICTLY FORBIDDEN. | | |

| | | | | |
|---|--------------|-----------------------------------|---|--------------|
| 4 | 1 | NT129-632-4 | NUT, PLAIN, SPLINE | C |
| REQ'D. | ITEM | PART NUMBER | DESCRIPTION | SYMBOL |
| EATON LIST OF MATERIAL FORMALLY E3162B-23 | | | | |
| MATERIAL .062, ALUMINUM 5052-H32 | | | THE TECHNICAL MATERIEL CORP. MAMARONECK, NEW YORK | |
| FINISH 5404-YEL. IRIDITE | | | TITLE BK'T, MTG, RELAY - LEFT & RIGHT | |
| UNLESS OTHERWISE SPECIFIED DIMENSIONS ARE IN INCHES AND INCLUDE CHEMICALLY APPLIED OR PLATED FINISHES | | | | |
| DRAWN <i>[Signature]</i> | DATE 3-31-65 | FINAL APPROVAL <i>[Signature]</i> | | DATE 5/25/65 |
| CHECKED <i>[Signature]</i> | DATE 5/26/65 | | | |
| ELECT. DES. | DATE | MS4493 | | Ø |
| MECH. DES. W. JORDAN | DATE 5/25/65 | SHEET | | REV. LTR. |