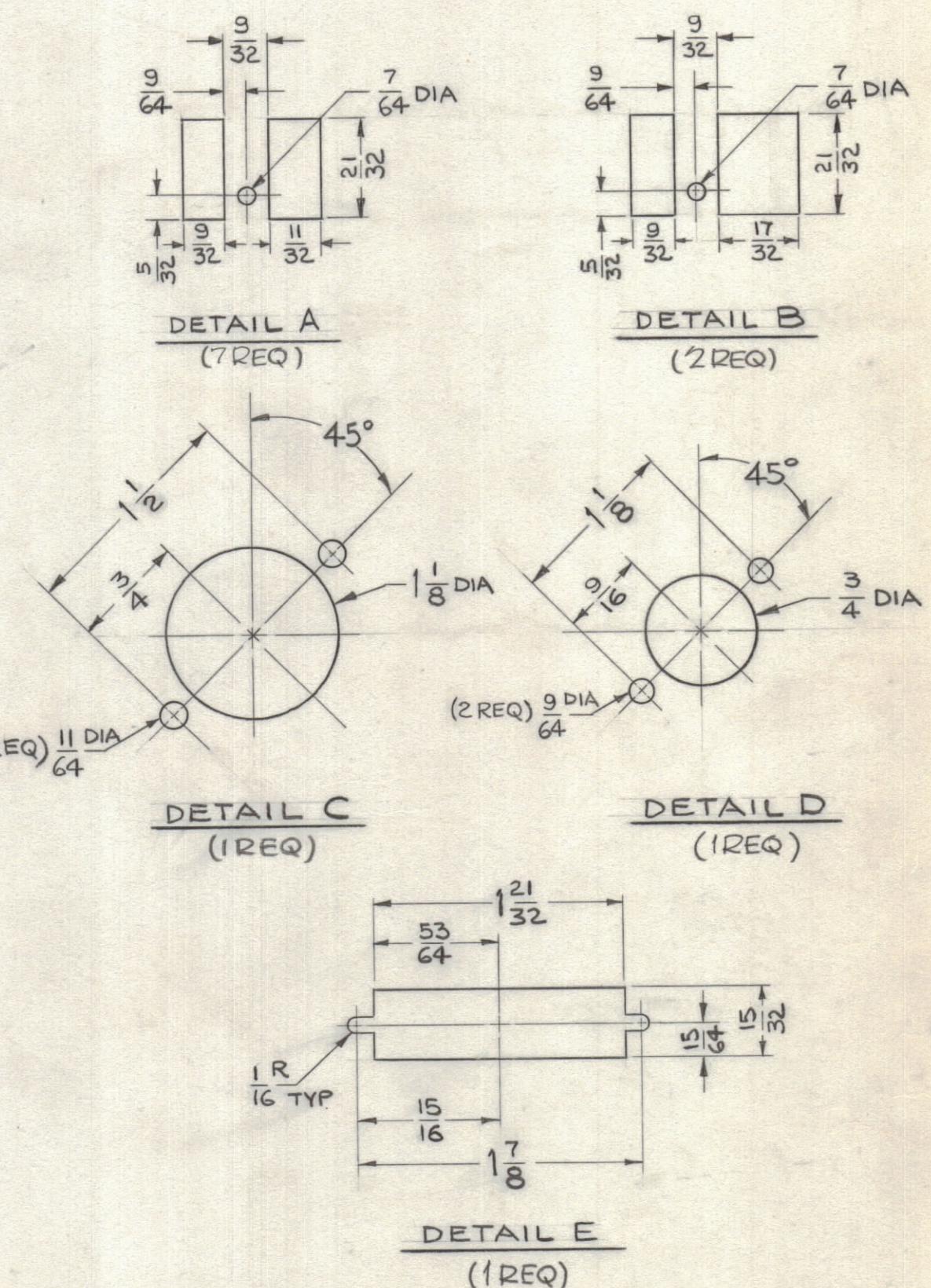
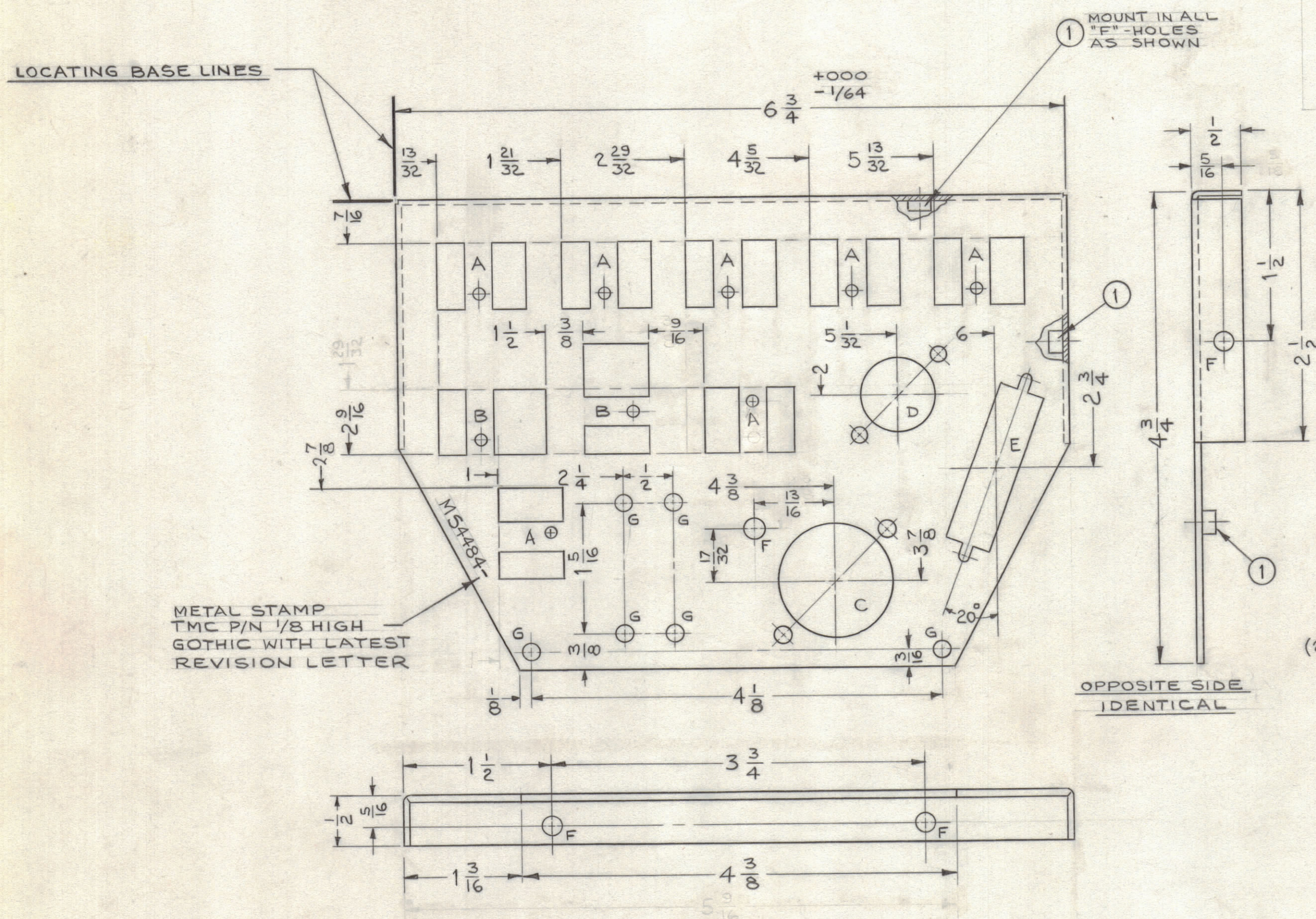


REVISIONS						
ZONE	SYM	DESCRIPTION	DATE	E.M.N. NO.	DRAFT	CHKD
E5, G5	X1	DETAIL "A" WAS DETAIL "B", TOL. ADD. TO DIM 6 3/4	4.8.65	X1	HR	KA
E5	X2	ON DETAIL A 5/32 DIM WAS FROM BOTTOM	5-7-65	X2	HR	KA
D6	X3	1 A DETAIL ADDED	8-2-65	X3	HR	KA
		ORIGINAL RELEASE FOR PRODUCTION	5/9/67		CV	JL



METAL STAMP
TMC P/N 1/8 HIGH
GOTHIC WITH LATEST
REVISION LETTER

OPPOSITE SIDE
IDENTICAL

HOLE	DESCRIPTION	REQ
A	SEE DETAIL	7
B	SEE DETAIL	2
C	SEE DETAIL	1
D	SEE DETAIL	1
E	SEE DETAIL	1
F	.191 - .194 DIA	5
G	11/64 DIA	6

UNLESS OTHERWISE SPECIFIED:
 1. USE MATERIAL THICKNESS FOR MAXIMUM RADIUS ON ALL BENDS
 2. ALL ANGULAR BENDS 90 DEGREES
 3. REMOVE ALL BURRS AND SHARP EDGES
 4. MOUNT INSERTS AFTER FINISHING

NOTES

1	TSTE 10K	
Q'TY./UNIT	MODEL USED ON	ASS'Y. NO.
SCALE	CODE	
1:1	A	
THE CONTENTS OF THIS DRAWING ARE THE EXCLUSIVE PROPERTY OF THE TECHNICAL MATERIEL CORP. ITS UNAUTHORIZED USE OR REPRODUCTION IN WHOLE OR IN PART IS STRICTLY FORBIDDEN.		

REF: LD 1838

4	1	NT129-632-4	NUT, PLAIN, SPLINE	F
REQ'D.	ITEM	PART NUMBER	DESCRIPTION	SYMBOL
F. BUDETTI LIST OF MATERIAL				
MATERIAL .064 THK ALUMINUM			THE TECHNICAL MATERIEL CORP. MAMARONECK, NEW YORK	
FINISH S404 YEL. IRIDITE			TITLE CHASSIS, LLC	
UNLESS OTHERWISE SPECIFIED DIMENSIONS ARE IN INCHES AND INCLUDE CHEMICALLY APPLIED OR PLATED FINISHES			DRAWN HR	DATE 3.30.65
DECIMALS .X ± .05 .XX ± .01 .XXX ± .005			CHECKED	DATE
FRACTIONS ± 1/64 ANGLES ± 0° 30'			ELECT. DES. A	DATE 5/9/67
TOLERANCES			MECH. DES. JS	DATE 4-5-65
			DATE 5/9/67	DATE
			SHEET	REV. LTR.

MS4484