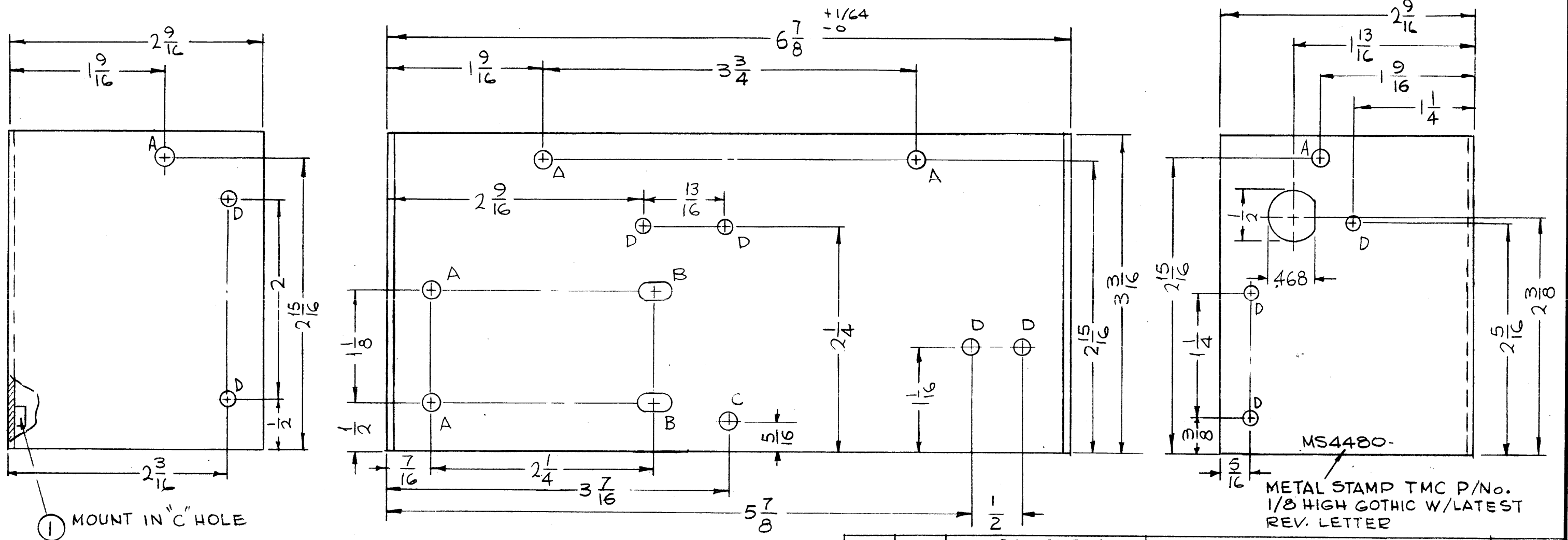


HOLE	DESCRIPTION	REQ.
A	11/64 DIA	6
B	11/64 X 11/32 SLOT	2
C	.191 - .194 DIA	1
D	9/64 DIA	9

MS4480

REVISIONS					
SYM	DESCRIPTION	DATE	E.M.N. NO.	DRAFT	CHKD
X1	3"D" HOLE Y LEFT SIDE VIEW ADDED	4-29-65		G.D.L.	
X2	ON RIGHT SIDE DIM. 1/4 WAS 2 1/4	5-6-65	X2	G.D.L.	
X3	1 D HOLE & FUSE HOLE ADDED	8-2-65	X3	<i>[Signature]</i>	
X4	3 D HOLES ADDED	8-6-65	X4	<i>[Signature]</i>	
Ø	ORIGINAL RELEASE FOR PRODUCTION	5-5-67	Ø	R.G.	



MS4480-
METAL STAMP TMC P/No.
1/8 HIGH GOTHIC W/LATEST
REV. LETTER

REF: LD1833

- UNLESS OTHERWISE SPECIFIED:
1. USE MATERIAL THICKNESS FOR MAXIMUM RADIUS ON ALL BENDS
 2. ALL ANGULAR BENDS 90 DEGREES
 3. REMOVE ALL BURRS AND SHARP EDGES
 4. MOUNT INSERTS AFTER FINISHING

NOTES

TSTE 10K		
Q'TY./UNIT	MODEL USED ON	ASS'Y. NO.
SCALE 1:1	CODE A	
THE CONTENTS OF THIS DRAWING ARE THE EXCLUSIVE PROPERTY OF THE TECHNICAL MATERIEL CORP. ITS UNAUTHORIZED USE OR REPRODUCTION IN WHOLE OR IN PART IS STRICTLY FORBIDDEN.		

REQ'D.	ITEM	PART NUMBER	DESCRIPTION	SYMBOL
1	1	NT 129-632-4	NUT, PLAIN, SPLINE	C

F. BUDETTI LIST OF MATERIAL

MATERIAL	.064 THK ALUMINUM 5052-H32	THE TECHNICAL MATERIEL CORP. MAMARONECK, NEW YORK	
FINISH	S404 YEL. IRIDITE	TITLE CHASSIS, WRAPAROUND	
UNLESS OTHERWISE SPECIFIED DIMENSIONS ARE IN INCHES AND INCLUDE CHEMICALLY APPLIED OR PLATED FINISHES		DRAWN WB	DATE 3-26-65
		CHECKED	DATE
		ELECT. DES. A.A.	DATE
		MECH. DES. P.S.	DATE 4-8-65
		FINAL APPROVAL <i>[Signature]</i> 5/5/67	
		MS4480	
		SHEET	
		REV. LTR.	