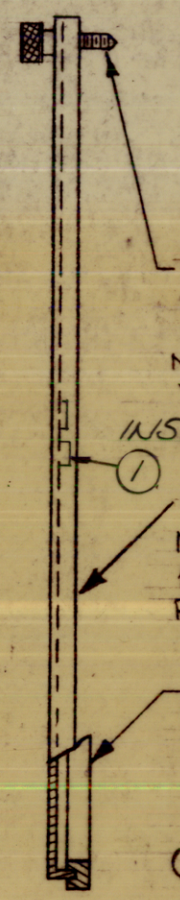
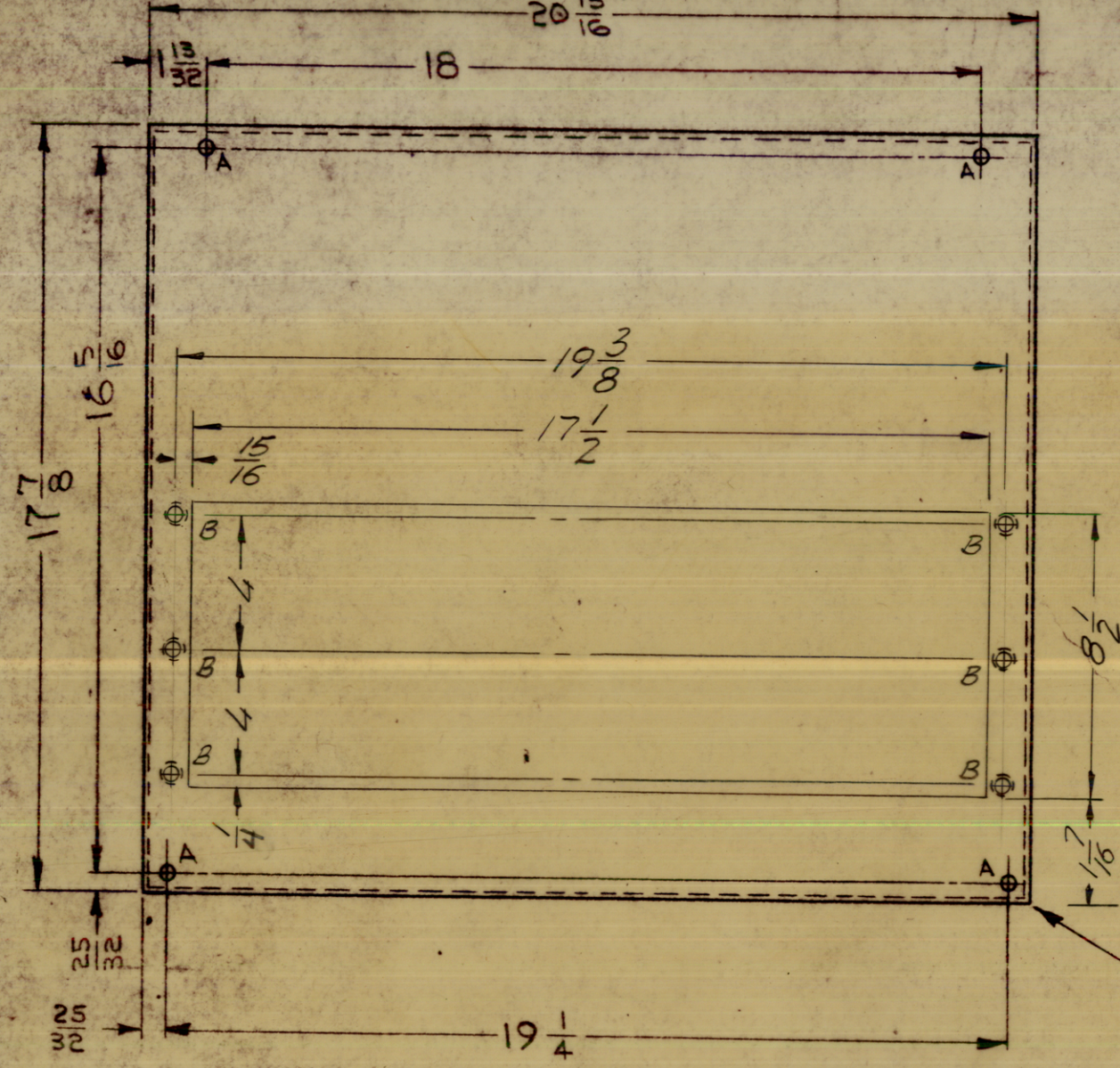
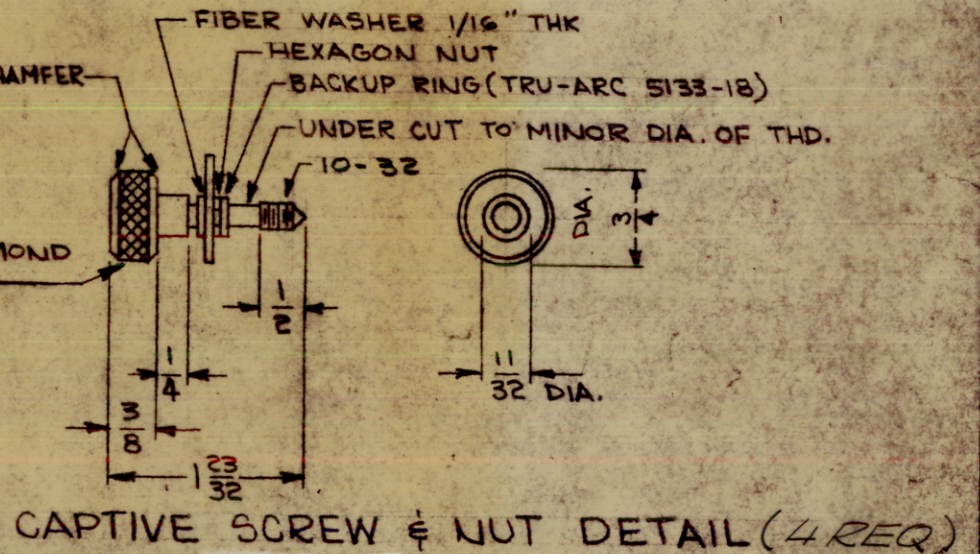


MS-4465-2 AS SHOWN
 MS-4465-3 NO CUTOUT & "B" HOLE



SEE CAPTIVE SCREW & NUT DETAIL. MOUNT IN ALL "A" HOLES.
 INSERT TMC TA-111-4-4 52.00 G
 ALL AROUND OPENING METAL STAMP TMC PART NO. MS-3741- W/LATEST REV. LETTER 1/8 HIGH GOTHIC LOCATED ON REAR.
 BLACK NEOPRENE CHANNEL. ALL AROUND EDGE AFTER FINISHING. (CONTINENTAL #528)
 4 PLACES

LEGEND		
HOLE	DESCRIPTION	REQ.
A	.203 DIA	4
B	.221-.224 DIA	6



- UNLESS OTHERWISE SPECIFIED:
1. USE MATERIAL THICKNESS FOR MAXIMUM RADIUS ON ALL BENDS.
 2. ALL ANGULAR BENDS 90°.
 3. REMOVE ALL BURRS AND SHARP EDGES.
 4. MOUNT INSERTS AFTER FINISHING.

FINISH NOTES:
 S-404 - IRIDITE 14-2 AL-COAT.
 S-114 - ZINC CHROMATE PRIMER
 S-520 - BLUE-GRAY TEXTURED VINYL PAINT.

REQ'D.	ITEM	PART NUMBER	DESCRIPTION	SYMBOL
6	1	NT129-0832-3	NUT PLN OR EQUIV.	B

F. BUDETTI
 LIST OF MATERIAL
 MATERIAL #18 GA CRS (.047)
 THE TECHNICAL MATERIEL CORP. MAMARONECK, NEW YORK

KIT 364		
QTY./UNIT	MODEL USED ON	ASSY. NO.
SCALE 1:4	CODE A	

SEE NOTES
 UNLESS OTHERWISE SPECIFIED DIMENSIONS ARE IN INCHES AND INCLUDE CHEMICALLY APPLIED OR PLATED FINISHES
 DRAWN [Signature] DATE []
 CHECKED [Signature] DATE []
 ELEC. DES. [] DATE []
 MECH. DES. [] DATE []

NOTES
 TAKEN FROM MS3741

THE CONTENTS OF THIS DRAWING ARE THE EXCLUSIVE PROPERTY OF THE TECHNICAL MATERIEL CORP. ITS UNAUTHORIZED USE OR REPRODUCTION IN WHOLE OR IN PART IS STRICTLY FORBIDDEN.

DECIMALS .X ± .05 .XX ± .01 .XXX ± .005	TOLERANCES	FRACTIONS ± 1/64 ANGLES ± 0° 30'	DATE []	DATE []	DATE []	DATE []	DATE []	DATE []	DATE []
MS-4465								Ø	
SHEET									REV. LTR.