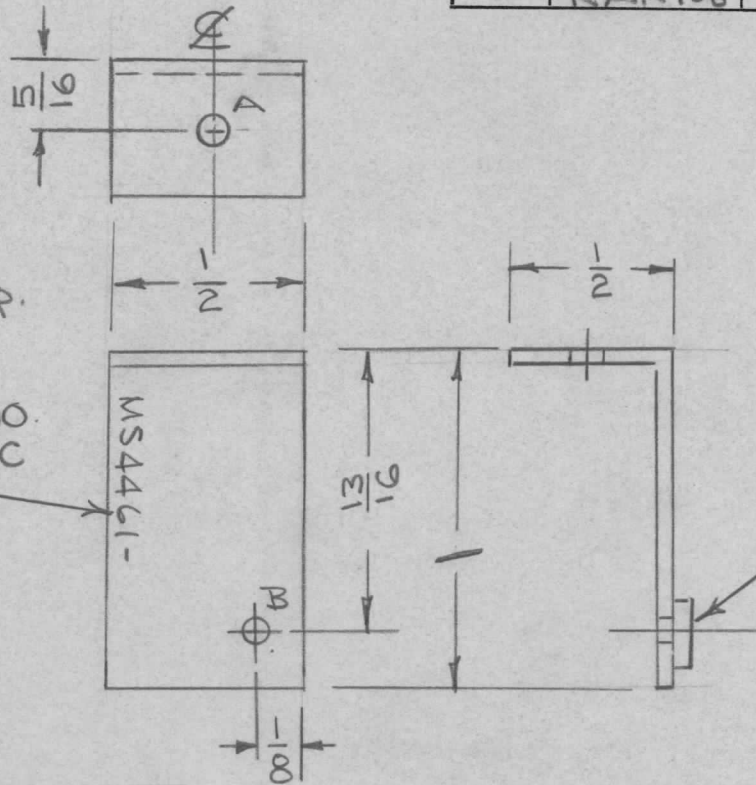


REQ. PER UNIT	USED ON			MS4461	∅
	MODEL	ASS'Y. NO.	DATE		
2	RAK106		2/23/66		



A - 11/24 D 1 REQ.

B - .191-194 DIA 1 REQ.

MARK TMC PT NO. 1/8 HIGH GOTHIC W/LATEST REV. LETTER.

1 MOUNT INSERTS IN HOLE "B" AS SHOWN AFTER FINISHING.

UNLESS OTHERWISE SPECIFIED:

1. USE MATERIAL THICKNESS FOR MAXIMUM RADIUS ON ALL BENDS
2. ALL ANGULAR BENDS 90 DEGREES
3. REMOVE ALL BURRS AND SHARP EDGES
4. MOUNT INSERTS AFTER FINISHING

1	1	NT129-632-4	NUT, PLN SPLINE		
REQ. ITEM	PART NO.		DESCRIPTION		SYMBOL
	.064 THICK		THE TECHNICAL MATERIEL CORP.		
	STOCK SIZE		MAMARONECK, NEW YORK		
∅	ORIGINAL RELEASE	9/26/69	ALUMINUM		
			BRACKET, ANGLE		
SYM	DESCRIPTION	DATE	CH. NO.	DRAFTS	CHECKER
UNLESS OTHERWISE SPECIFIED DIMENSIONS ARE IN INCHES AND INCLUDE CHEMICALLY APPLIED OR PLATED FINISHES		SCALE			
DECIMALS	FRACTIONS	CODE			
.X ± .05	± 1/64				
.XX ± .01	ANGLES				
.XXX ± .005	± 0° 30'				
TOLERANCES					
5052-H32			JAD.	JCS	9/26/69
TYPE & TEMPER	HEAT TREAT. SPEC.	DRAWN	CHECKED	FINAL APPROVAL	
S404 YELLOW IRIDITE				MS4461 ∅	
FINISH & SPEC. NO.		ELEC. DES. APP.	MECH. DES. APP.		