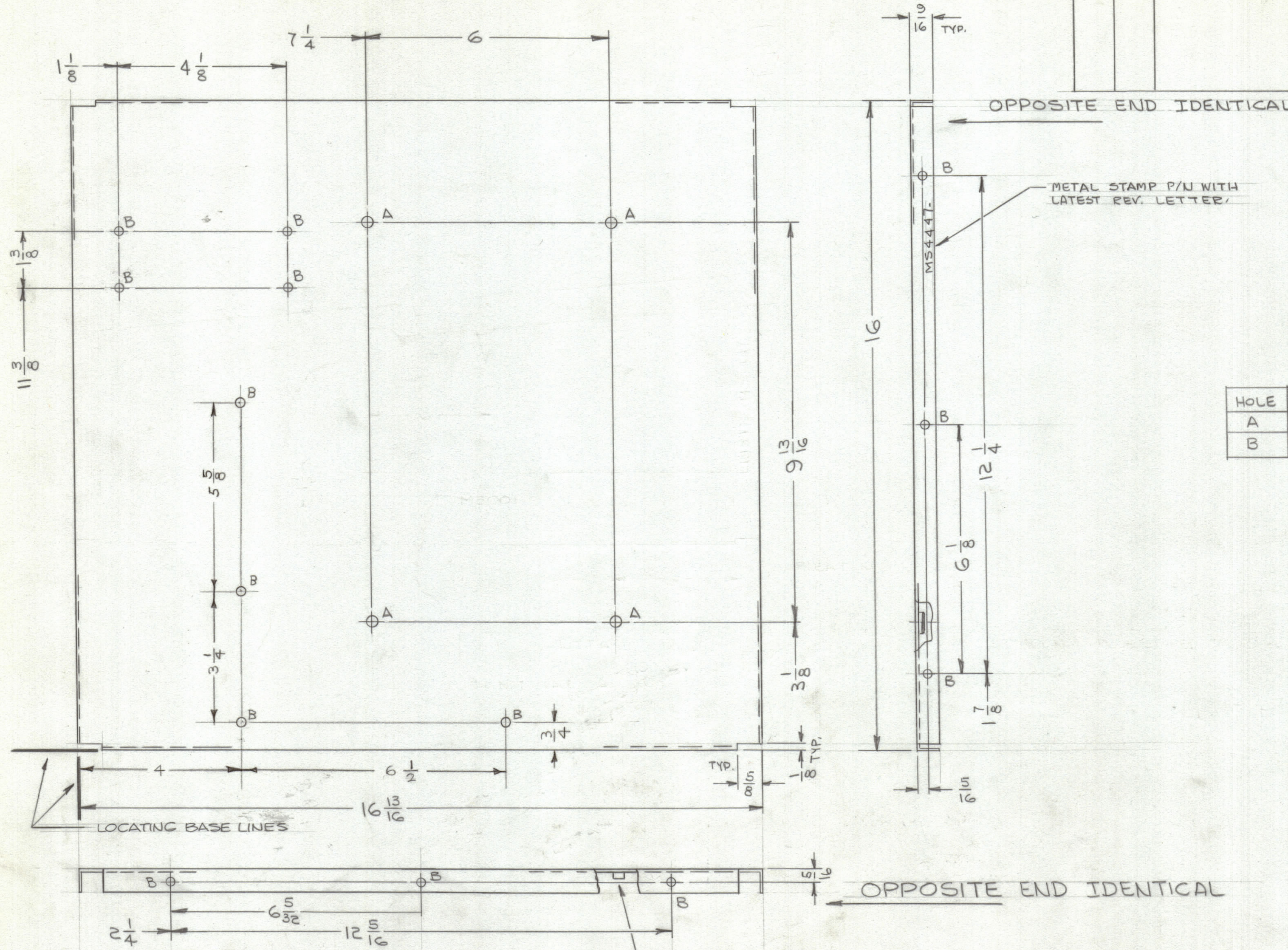


REVISIONS							
ZONE	SYM	DESCRIPTION	DATE	E.M.N. NO.	DRAFT	CHKD	APPD
	Ø	ORIGINAL RELEASE FOR PRODUCTION	4/27/65	-11-			
	A	4B HOLES ADDED GT/WAS 16	6/28/65	14358	DKK	JCB	JEE



HOLE	DESCRIPTION	REQ.
A	.250-.253 DIA	4
B	11/64 DIA	20

REF: LD1847

UNLESS OTHERWISE SPECIFIED:

1. USE MATERIAL THICKNESS FOR MAXIMUM RADIUS ON ALL BENDS
2. ALL ANGULAR BENDS 90 DEGREES
3. REMOVE ALL BURRS AND SHARP EDGES
4. MOUNT INSERTS AFTER FINISHING

Q'TY./UNIT	MODEL USED ON	ASS'Y. NO.
1	RTTA-1	
SCALE	CODE	
1:2	A	

REQ'D.	ITEM	PART NUMBER	DESCRIPTION	SYMBOL
4	1	NT129-1032-4	NUT, PLAIN, SPLINE	A

F. EATON LIST OF MATERIAL	
MATERIAL	.081, ALUMINUM 5052-H32
FINISH	5404-YEL. IRIDITE
TITLE	CHASSIS, MAIN

UNLESS OTHERWISE SPECIFIED	DECIMALS	FRACTIONS
DIMENSIONS ARE IN INCHES AND INCLUDE CHEMICALLY APPLIED OR PLATED FINISHES	.X ± .05 .XX ± .01 .XXX ± .005	± 1/64 ANGLES ± 0° 30'

DRAWN	DATE	FINAL APPROVAL	DATE
JCB	4/26/65	J.E. Eaton	4/29/65
CHECKED	DATE	ELECT. DES.	DATE
JCB	4/27/65		
MECH. DES.	DATE	SHEET	REV. LTR.
MP	4-28-65	MS4447	A

NOTES

THE CONTENTS OF THIS DRAWING ARE THE EXCLUSIVE PROPERTY OF THE TECHNICAL MATERIEL CORP. ITS UNAUTHORIZED USE OR REPRODUCTION IN WHOLE OR IN PART IS STRICTLY FORBIDDEN.