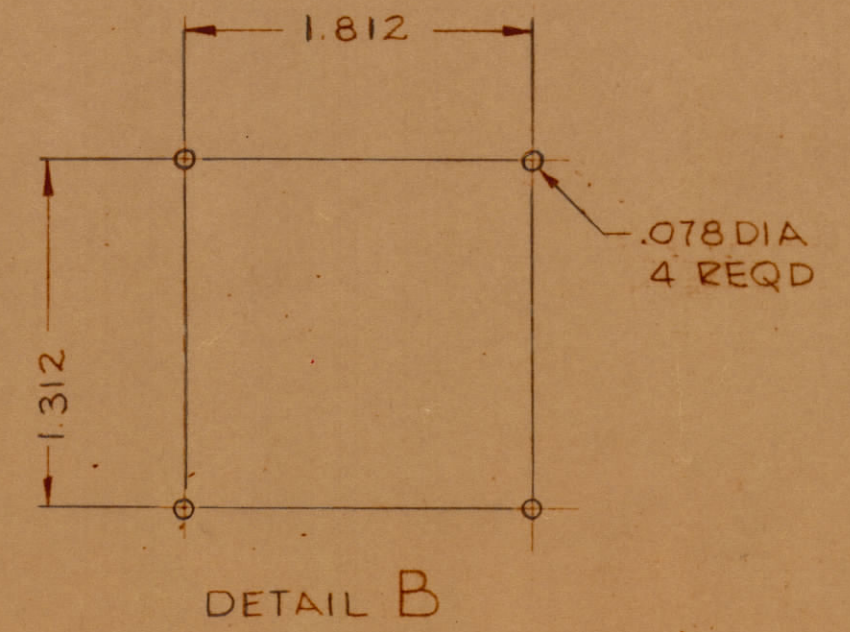
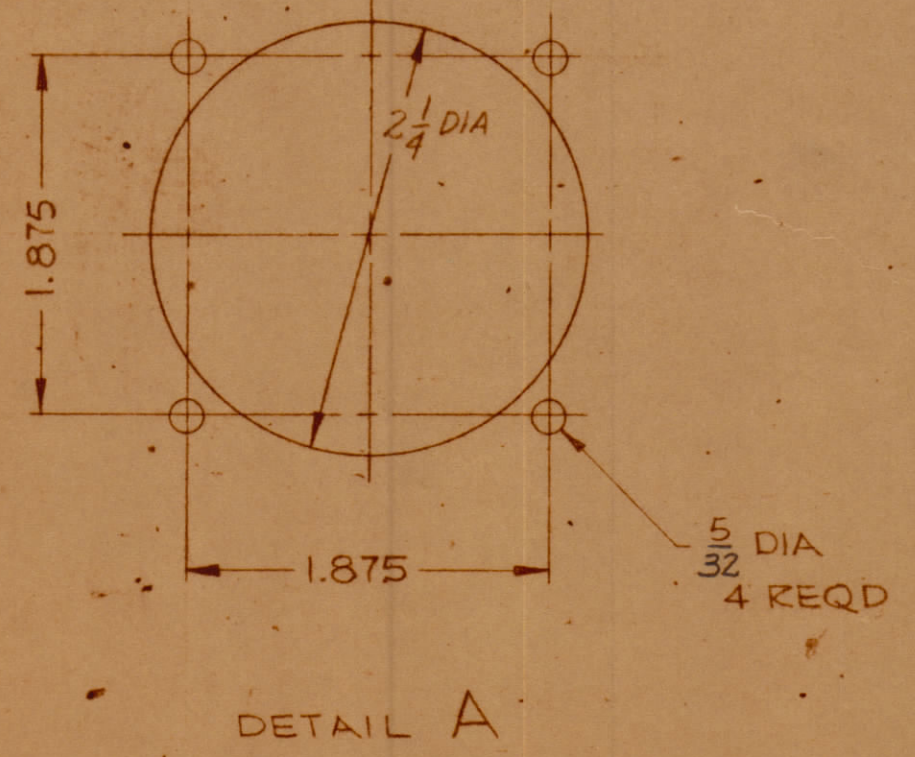
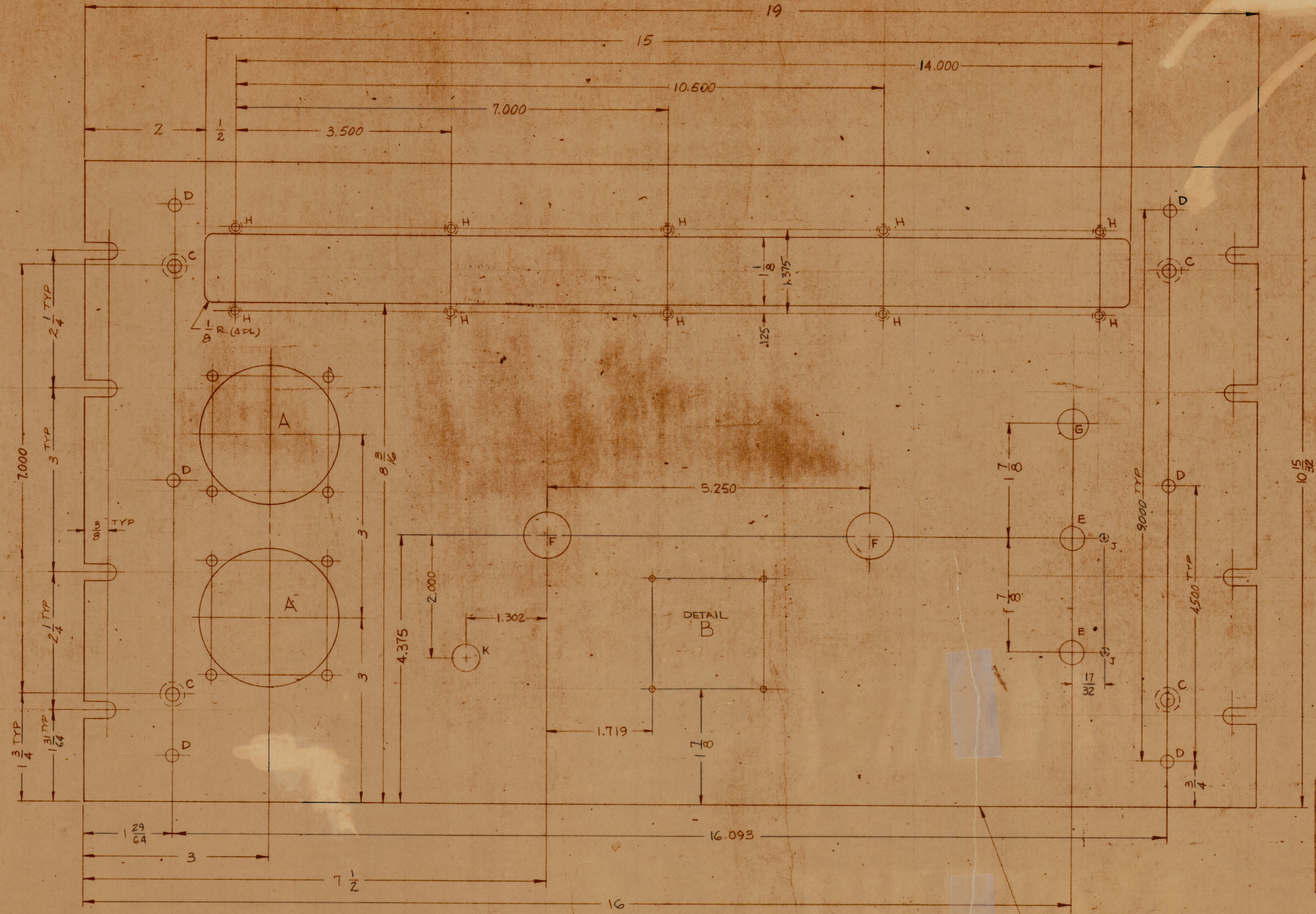


REVISIONS						
NO.	DATE	DESCRIPTION	BY	CHKD	APPD	
1	3/5/65	ORIGINAL RELEASE FOR PRODUCTION				



HOLE	DESCRIPTION	REQD
A	SEE DETAIL	2
B	SEE DETAIL	1
C	.196 DIA CSK .82 X .390 DIA (10-22)	4
D	3/16 DIA	6
E	3/8 DIA	2
G	15/32 DIA	1
H	DR # TAP # 3-48	10
F	3/4 DIA	2
J	.130 DIA X 3/32 DEEP ON REAR OF PANEL	2
K	7/16 DIA	1

METAL STAMP TMC PART NO. 1/8
HIGH GOTHIC ON REAR OF PANEL
W/LATEST REVISION LETTER

- MACHINING:**
- MILL ALL EDGES.
 - HOLES MUST BE DRILLED, UNLESS OTHERWISE SPECIFIED.
 - LATERAL BOW OF PANEL MUST BE KEPT TO .031 TOLERANCE.
 - PANEL MUST BE FREE OF ALL MACHINING MARKS, GOOGES AND SCRATCHES. IF NECESSARY, SAND FRONT OF PANEL WITH NO. 120 GRIT SANDPAPER.
- FINISH NOTES:**
- S404 - IRIDITE 14-2 AL-COAT.
 - S114 - ZINC CHROMATE PRIMER FRONT AND
 - S115 - SMOOTH GRAY ENAMEL EDGES ONLY

UNLESS OTHERWISE SPECIFIED
DIMENSIONS ARE IN INCHES AND INCLUDE
CHEMICALLY APPLIED OR PLATED FINISHES

DECIMALS	FRACTIONS
± .05	± 1/64
± .01	ANGLES
± .005	± 0° 30'

TOLERANCES

THE CONTENTS OF THIS DRAWING ARE THE EXCLUSIVE PROPERTY
OF THE TECHNICAL MATERIEL CORP. ITS UNAUTHORIZED USE OR
REPRODUCTION IN WHOLE OR IN PART IS STRICTLY FORBIDDEN.

REF: LD1804		PART NUMBER		DESCRIPTION		SYMBOL	
MATERIAL 3/16 ALUMINUM 2024-T3				LIST OF MATERIAL			
FINISH SEE NOTES				TITLE PANEL, FRONT, MACHINING			
SCALE 1:1		CODE A		UNLESS OTHERWISE SPECIFIED DIMENSIONS ARE IN INCHES AND INCLUDE CHEMICALLY APPLIED OR PLATED FINISHES		DRAWN G.D.L.	
DATE 3/4/65		DATE 3/4/65		DATE 3/4/65		DATE 4/13/65	
CHECKED J.P.		ELECT. DES. J.P.		DATE 3/4/65		DATE 3/4/65	
MECH. DES. J.P.		DATE 3/4/65		DATE 3/4/65		DATE 3/4/65	
SHEET		SHEET		SHEET		SHEET	
MS4407		MS4407		MS4407		MS4407	

NOTES

MS4407