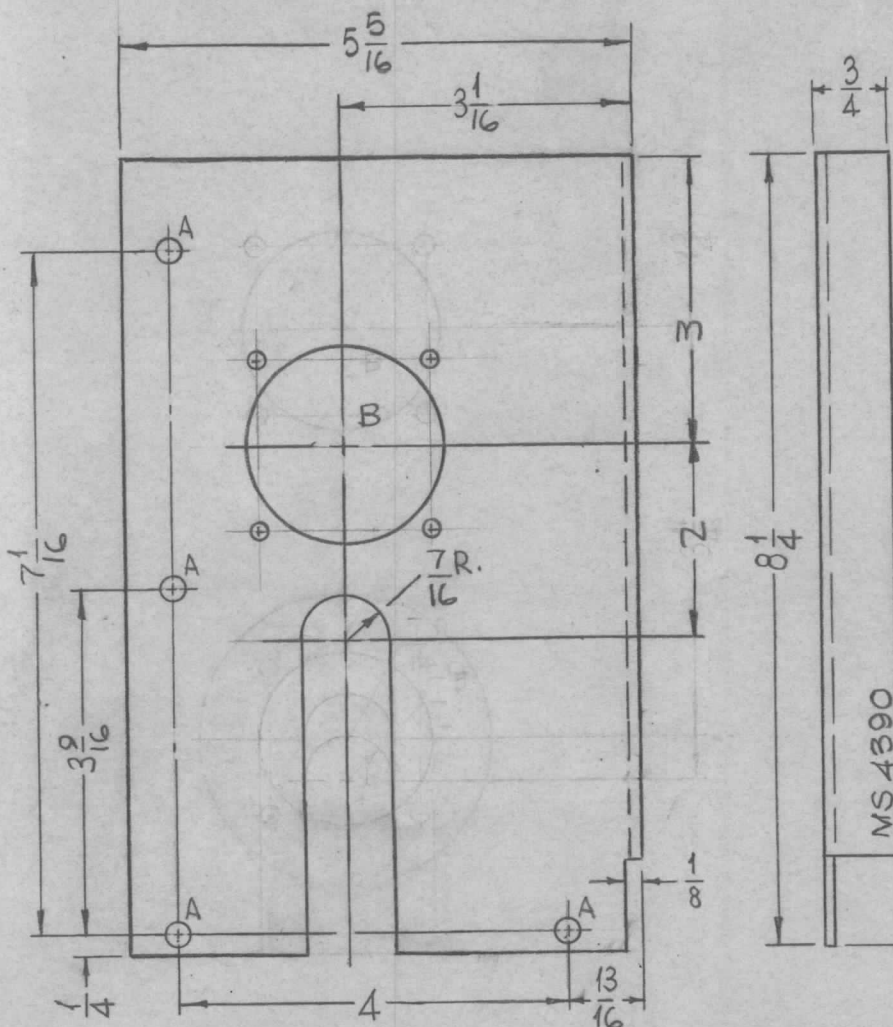
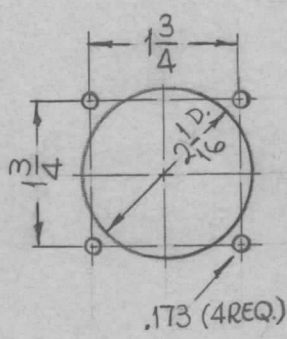


REQ. PER UNIT	USED ON		MS 4390	Q
	MODEL	ASS'Y. NO.		
1	AP12C		2-16-65	



HOLES	DESCRIPTION	REQ.
A	7/32 DIA.	4
B	SEE DETAIL	1



B-DETAIL

METAL STAMP TMC PART NO. 1/8 HIGH GOTHIC W/LATEST REV. LETTER.

- UNLESS OTHERWISE SPECIFIED:
1. USE MATERIAL THICKNESS FOR MAXIMUM RADIUS ON ALL BENDS
  2. ALL ANGULAR BENDS 90 DEGREES
  3. REMOVE ALL BURRS AND SHARP EDGES

Q	ORIGINAL RELEASE FOR PRODUCTION	8-25-66	Q	RME		REF: LD 1850						
X3	3 WAS 1-3/4, 2 WAS 3-1/16	7-29-65	X3	SRG	7/8		REQ. ITEM	PART NO.	F. BUDETTI	DESCRIPTION	SYMBOL	
X2	1 PLUG DETAIL DELETED 3 1/16 WAS 3/4, SLOT ADDED	4-21-65	X2	SRG	7/8		1/8 THICK STOCK SIZE		THE TECHNICAL MATERIEL CORP. MAMARONECK, NEW YORK			
X1	MODEL WAS RFTA-1	3-25-65	X1	SRG	7/8		ALUMINUM		BRACKET, MTG CONNECTORS			
X	EXP. RELEASE	2-16-65	X	SRG	7/8		MATERIAL					
SYM	DESCRIPTION	DATE	CH. NO.	DRAFTS	CHECKER	ENG. APP.	5052-H32		SRG			
UNLESS OTHERWISE SPECIFIED DIMENSIONS ARE IN INCHES AND INCLUDE CHEMICALLY APPLIED, OR PLATED FINISHES		SCALE	1/2:1				TYPE & TEMPER		HEAT TREAT. SPEC.	DRAWN	CHECKED	FINAL APPROVAL
DECIMALS .X ± .05 .XX ± .01 .XXX ± .005		TOLERANCES		FRACTIONS ± 1/64 ANGLES ± 0° 30'		CODE	S404 YELLOW IRIDITE		ELEC. DES. APP.		MECH. DES. APP.	
				A		FINISH & SPEC. NO.		MIL		MS 4390 Q		