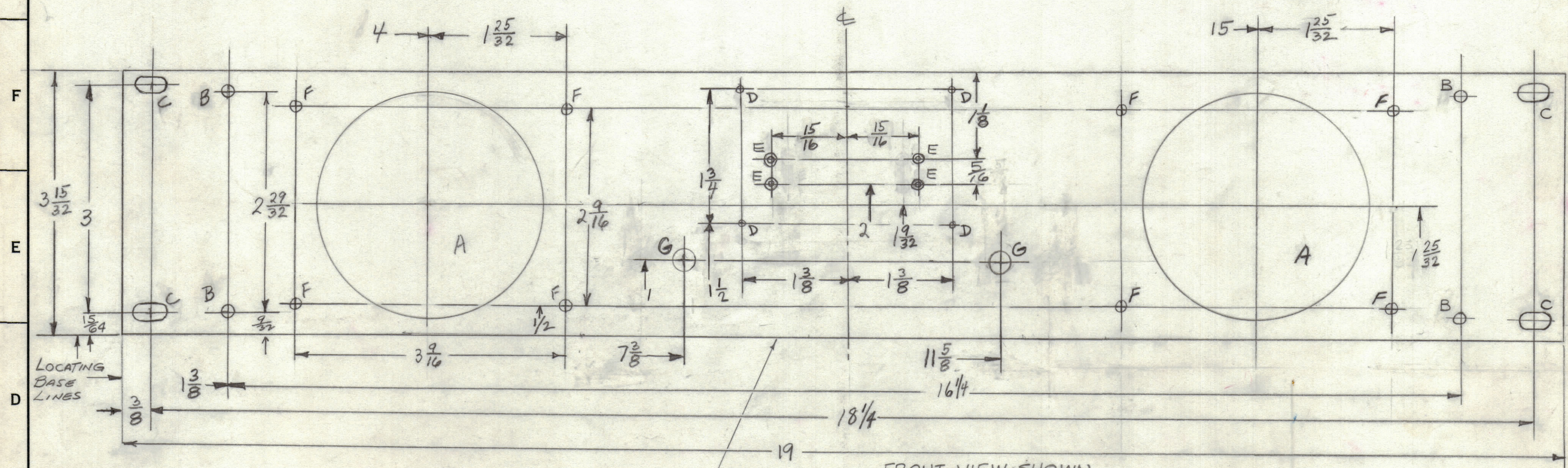


HOLE	DESCRIPTION	REQ
A	3" dia	2
B	13/64 dia	4
C	1/4 dia x 29/64 slot	4
D	.078 dia.	4
E	.125 dia CSink .225 dia. 82°	4
F	5/32 dia	8
G	13/32 dia	2

REVISIONS							
ZONE	SYM	DESCRIPTION	DATE	E.M.N. NO.	DRAFT	CHKD	APPD
	X	Experimental Release	2/12/65				MM
E1	X1	25/32 WAS 1 9/64	2-23-65		HKA		
	Ø	ORIGINAL RELEASE FOR PRODUCTION	2/24/65				



METAL STAMP TMC PART NO. 1/8 HIGH GOTHIC ON REAR OF PANEL W/LATEST REVISION LETTER

**FINISH NOTES:**  
 1. S404 - IRIDITE 14-2 AL-COAT.  
 2. S114 - ZINC CHROMATE PRIMER ) FRONT AND  
 3. S115 - SMOOTH GRAY ENAMEL ) EDGES ONLY

**MACHINING:**  
 1. MILL ALL EDGES.  
 2. HOLES MUST BE DRILLED, UNLESS OTHERWISE SPECIFIED.  
 3. LATERAL BOW OF PANEL MUST BE KEPT TO .031 TOLERANCE.  
 4. PANEL MUST BE FREE OF ALL MACHINING MARKS, GOUGES AND SCRATCHES. IF NECESSARY, SAND FRONT OF PANEL WITH NO. 120 GRIT SANDPAPER.

REF: LD 1789

REQ'D.	ITEM	PART NUMBER	DESCRIPTION	SYMBOL
LIST OF MATERIAL				
MATERIAL		THE TECHNICAL MATERIEL CORP.		
3/16 ALUMINUM 2024-T3		MAMARONECK, NEW YORK		
FINISH		TITLE		
SEE NOTE		PANEL, FRONT		
UNLESS OTHERWISE SPECIFIED		DRAWN		
DIMENSIONS ARE IN INCHES AND INCLUDE		DATE		
CHEMICALLY APPLIED OR PLATED FINISHES		CHECKED		
DECIMALS		ELECT. DES.		
.X ± .05		DATE		
.XX ± .01		MECH. DES.		
.XXX ± .005		DATE		
FRACTIONS		SHEET		
± 1/64		MS 4378		
ANGLES		REV. LTR.		
± 0° 30'		Ø		

Q'TY/UNIT	MODEL USED ON	ASS'Y. NO.
1	LSP-15	
SCALE	CODE	

NOTES