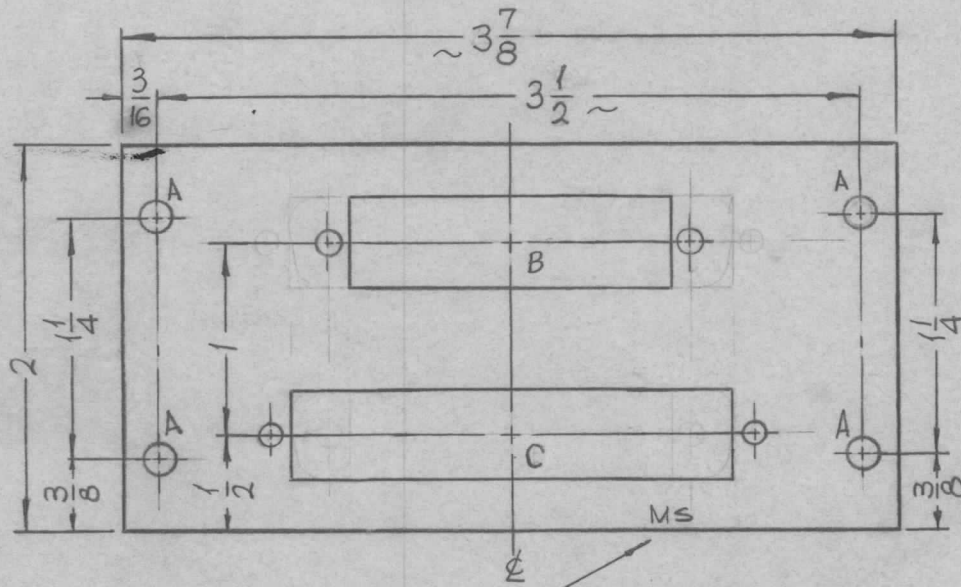
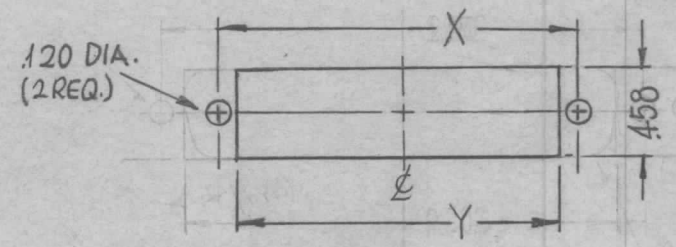


REQ. PER UNIT	USED ON			MS4377 $\emptyset$
	MODEL	ASS'Y. NO.	DATE	
1	RFTA-1		12-11-64	

HOLES	DESCRIPTION	REQ.
A	.161-.164 DIA.	4
B	SEE DETAIL	2



① MOUNT IN ALL "A" HOLES.



DETAIL	X	Y
B	1.852	1.654
C	2.500	2.302

METAL STAMP TMC PART NO. 1/8 HIGH GOTHIC W/LATEST REV. LETTER.

SYMBOL	DESCRIPTION	DATE	CH. NO.	DRAFTS	CHECKER	ENG. APP.	REQ. ITEM	PART NO.	DESCRIPTION	SYMBOL				
$\emptyset$	ORIGINAL RELEASE	7/15/69	$\emptyset$	CU			4	1 NT129-440-4	NUT, PLAIN, SPLINE	A				
X <sub>2</sub>	1 B CHANGED TO C	1-21-65	X <sub>2</sub>	SRG			.064 THICK STOCK SIZE ALUMINUM MATERIAL 5052-H32 TYPE & TEMPER S404 YELLOW IRIDITE FINISH & SPEC. NO.							
X <sub>1</sub>	B DETAIL WAS 37 PIN CONV.	1-14-65	X <sub>1</sub>	SRG							THE TECHNICAL MATERIEL CORP. MAMARONECK, NEW YORK PLATE, JACK MOUNTING			
X	EXP. RELEASE	12-11-64	X	SRG							DRAWN SRG CHECKED AA FINAL APPROVAL MS4377 $\emptyset$			
UNLESS OTHERWISE SPECIFIED DIMENSIONS ARE IN INCHES AND INCLUDE CHEMICALLY APPLIED OR PLATED FINISHES		SCALE		1:1										
TOLERANCES		FRACTIONS		CODE										
.X $\pm$ .05 .XX $\pm$ .01 .XXX $\pm$ .005		$\pm$ 1/64 ANGLES $\pm$ 0° 30'		A										