

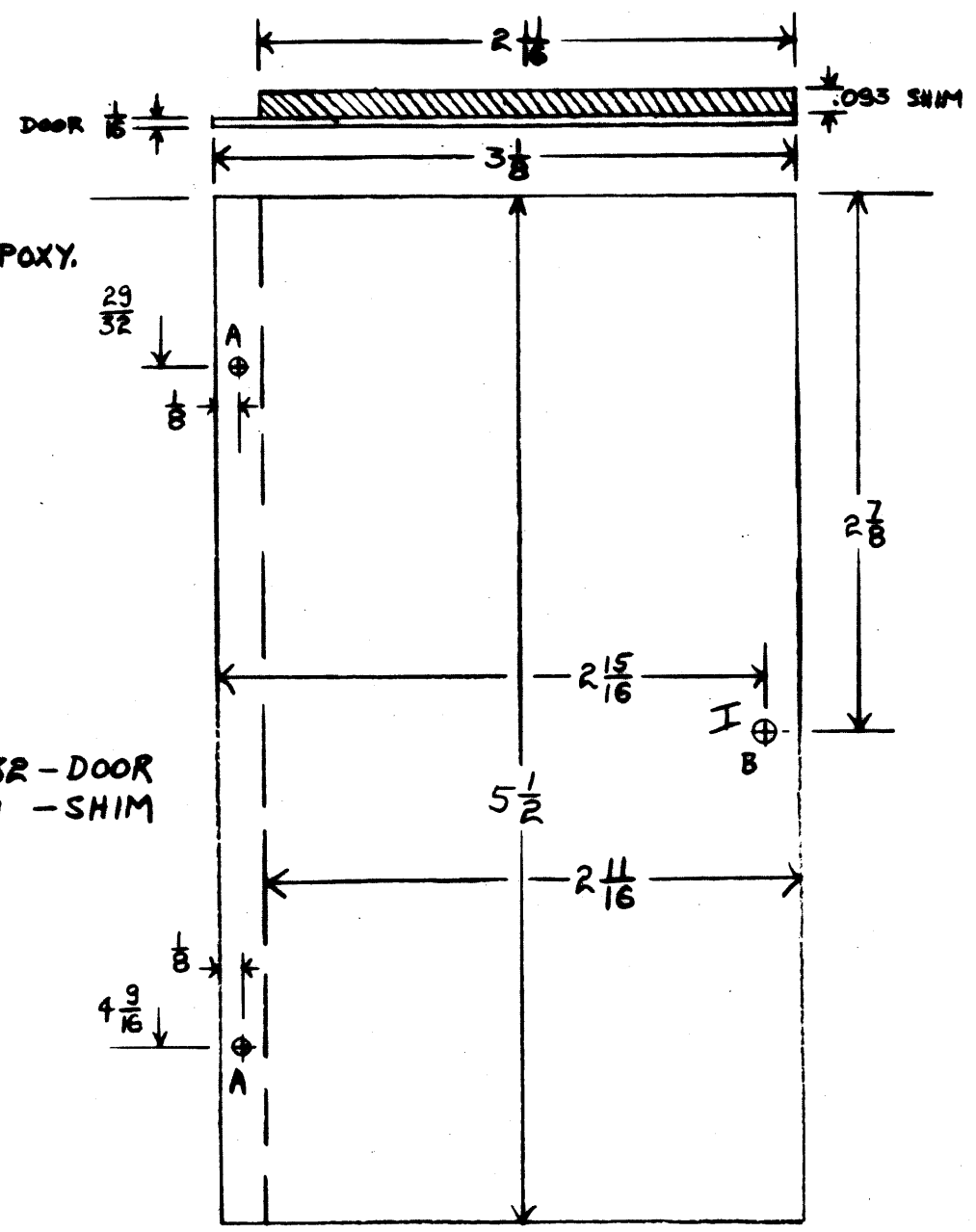
MS4359

REVISIONS					
SYM	DESCRIPTION	DATE	E.M.N. NO.	DRAFT	APPD
Ø	ORIGINAL RELEASE FOR PRODUCTION	8/19/69	Ø		

NOTE - ALL HOLES ARE DRILLED AFTER DOOR + SHIM ARE LAMINATED - USE EPOXY.

KEY	DESCRIPTION	QTY
A	$\frac{3}{32}$ HOLE	2
B	6-32 TAP	1

MATERIAL:
 $\frac{1}{16}$ " ALUMINUM 5052-H32 - DOOR
 .093 " " " - SHIM
DO NOT FINISH



REQ'D.	ITEM	PART NUMBER	DESCRIPTION	SYMBOL
--------	------	-------------	-------------	--------

LIST OF MATERIAL

MATERIAL
 THE TECHNICAL MATERIEL CORP.
 MAMARONECK, NEW YORK

FINISH
 TITLE
 PLATE, ACCESS, CONT. PANEL

QTY./UNIT	FORM USED ON	ASSY. NO.
SCALE	CODE	S401- (A10529)

THE CONTENTS OF THIS DRAWING ARE THE EXCLUSIVE PROPERTY OF THE TECHNICAL MATERIEL CORP. ITS UNAUTHORIZED USE OR REPRODUCTION IN WHOLE OR IN PART IS STRICTLY FORBIDDEN.

UNLESS OTHERWISE SPECIFIED DIMENSIONS ARE IN INCHES AND INCLUDE CHEMICALLY APPLIED OR PLATED FINISHES		DRAWN	DATE	FINAL APPROVAL	DATE
DECIMALS .I ± .05 .II ± .01 .XXX ± .005		CHECKED	DATE	SJM	8/12/69
FRACTIONS ± 1/64 ANGLES ± 0° 30'		ELECT. DES.	DATE		
TOLERANCES		MECH. DES.	DATE	MS4359	Ø
				SHEET	REV. LTR.

NOTES